

OPX-365

OPTIMAX™ 365 UV-A LED Inspection Flashlight

(Patent Pending)

Powerful, rechargeable, high-intensity UV-A inspection flashlight featuring state-of-the-art, ultra-hi-flux LED technology!

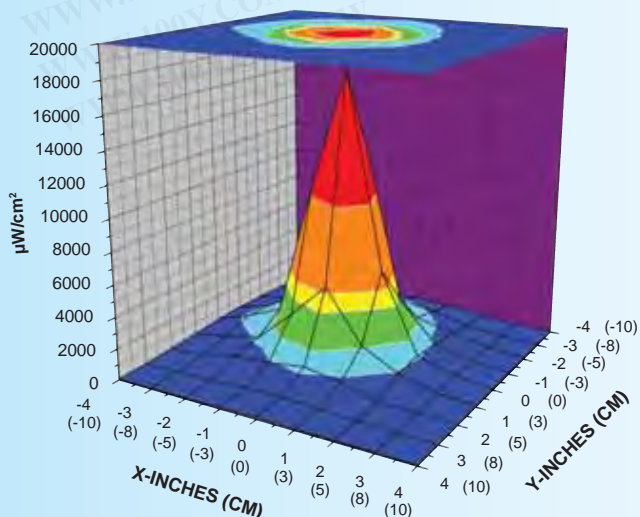
- Nominal steady-state UV-A intensity of $18,000 \mu W/cm^2$ at 15 inches (38 cm)
- 30,000-hour LED service life
- Low visible light emission — less than 2 foot-candles (22 lux)
- Electronic Intensity Stabilizer assures consistent performance. Beam strength will not weaken between charges!
- Instant-on operation. Lamp reaches full intensity immediately!
- Ergonomic, portable and rugged. Anodized aluminum lamp body minimizes corrosion and stands up to years of heavy use.
- Powered by a rechargeable NiMH battery. Provides 90 minutes of continuous inspection between charges.
- Meets ASTM UV-A intensity specifications for FPI and MPI

Note: For even greater light uniformity, order our optional **DF-365** diffusing filter.

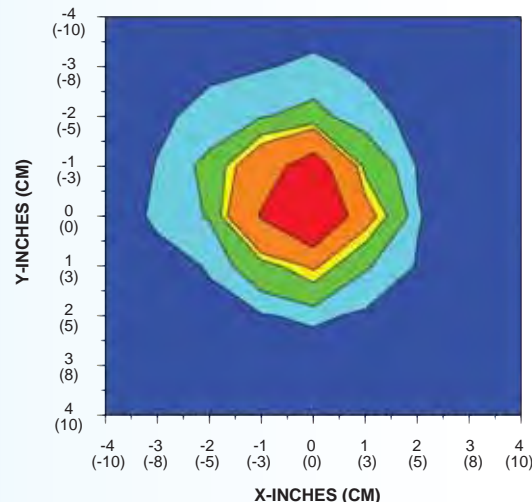


Comes complete with smart AC and DC chargers, UV-absorbing spectacles, belt holster and padded carrying case. AC charger available in 120V, 230V, 240V and 100V versions.

SURFACE CONTOUR PROFILE AT 15 IN (38 CM)



TOP INTENSITY PROFILE AT 15 IN (38 CM)



TRI-365

TRITAN™ 365 Multi-LED, Broad-Beam UV-A Inspection Lamp

(Patent Pending)

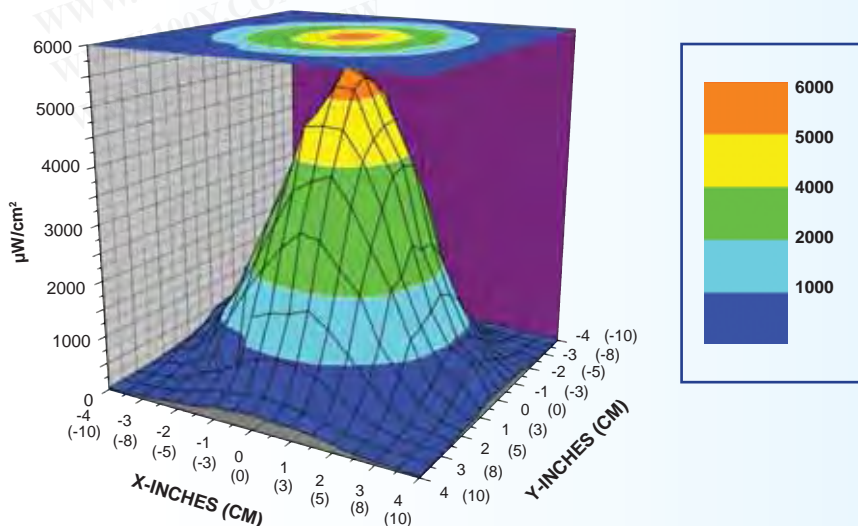
Features **three** cool-running, ultra-high-flux UV-A LEDs for inspection, **plus** a convenient white light LED to illuminate dark work areas. This lamp's broad-beam configuration provides a wider coverage area than conventional UV-A inspection lamps, while its compact head design allows access into areas inaccessible to larger lamps.

- Nominal steady-state UV-A intensity of $5,500 \mu\text{W}/\text{cm}^2$ at 15 inches (38 cm)
- Large 4 inch (10 cm) diameter coverage area, with minimum UV-A intensity of $2,000 \mu\text{W}/\text{cm}^2$
- 30,000-hour LED service life
- UV LEDs produce low visible light emission — less than 2 foot-candles (22 lux)
- Electronic Intensity Stabilizer assures consistent LED performance
- Convenient grip-mounted, three-way rocker switch: White light/Off/UV
- Instant-on operation. Lamp reaches full intensity immediately!
- Rugged, ergonomic, angled lamp body provides safe, fatigue-free use
- Rubber bumper with Borofloat® glass lens protects LEDs from damage
- Built-in fan keeps LEDs cool to maintain optimum light output during extended use
- Choice of 8 foot (2.4 m) or extra-long 20 foot (6.1 m) power cord with AC plug. Available in 120V, 230V, 240V and 100V models.
- Meets ASTM UV-A intensity specifications for FPI and MPI

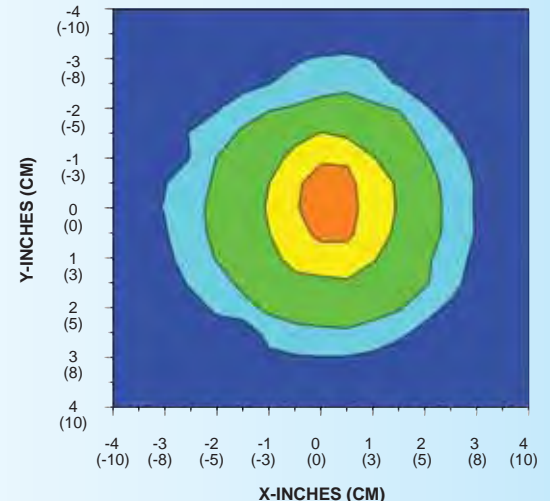
Also available: TRI-365M portable, battery-operated AC/DC lamp kit. Includes TRITAN 365M UV lamp, rechargeable NiMH battery pack with adjustable shoulder strap and belt loop, AC and DC cord sets, smart AC charger, UV-absorbing spectacles and soft carrying case. AC charger available in 120V, 230V, 240V and 100V versions.



SURFACE CONTOUR PROFILE AT 15 IN (38 CM)



TOP INTENSITY PROFILE AT 15 IN (38 CM)



ML-3500 Series MAXIMA™

Ultra-High Intensity UV-A Lamps

These super-powerful lamps make NDT inspections easier, safer and more reliable. They feature state-of-the-art micro discharge light (MDL) technology with a fatigue-free ergonomic design.

- Deliver up to 10 times the UV-A output of conventional HID inspection lamps
- Prefocused at the factory
- Instant on/off/restrike
- Lightweight, solid-state ballast
- Integral bulb/reflector assembly
- Stay-cool, impact-resistant and dent-proof housing
- Available in 120V, 230V, 240V and 100V versions, as well as battery-operated versions
- All bulbs feature a rated life of 2,000 hours

CE

The MAXIMA™ series consists of three models:

The **ML-3500S** with a spot reflector has a nominal steady-state UV-A intensity of $50,000 \mu\text{W}/\text{cm}^2$ at 15 inches (38 cm).

The **ML-3500D** with a spot reflector and diffusing filter has a nominal steady-state UV-A intensity of $14,000 \mu\text{W}/\text{cm}^2$ at 15 inches (38 cm).

The **ML-3500FL** with a flood reflector has a nominal steady-state UV-A intensity of $4,500 \mu\text{W}/\text{cm}^2$ at 15 inches (38 cm).

All models come standard with 8 foot (2.4 m) primary and secondary cords. Lamps are also available with extended length primary cords or with a 35 foot (10.7 m) secondary cord housed in a retractable “flying” reel.

In addition, all MAXIMA™ lamps are available in battery-operated “M” versions. Each includes a 12-volt, 7 amp/hr rechargeable battery that will operate the lamp for a full two hours. A battery charger and carrying case are included. Visit www.spectroline.com for more details.



Line voltage model

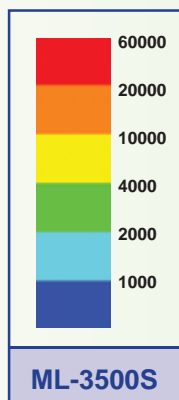
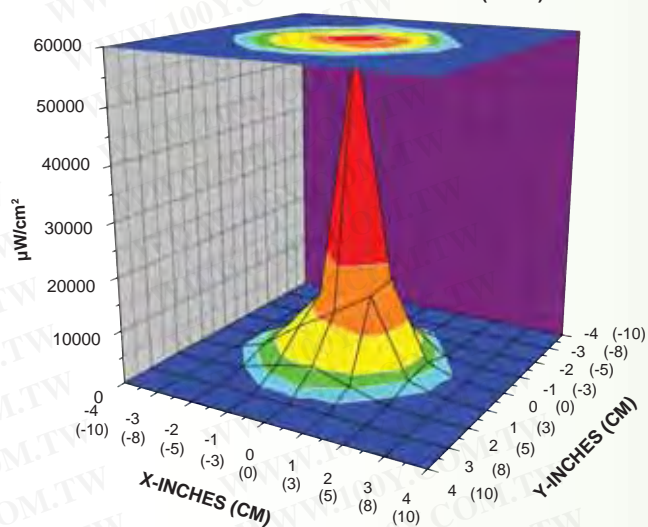


Battery-operated “M” version



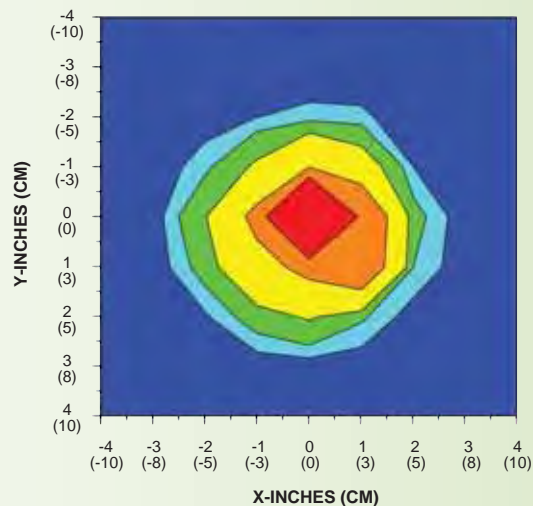
ML-3500 Series lamp with 35 foot (10.7 m) secondary cord housed in a retractable “flying” reel

SURFACE CONTOUR PROFILE AT 15 IN (38 CM)

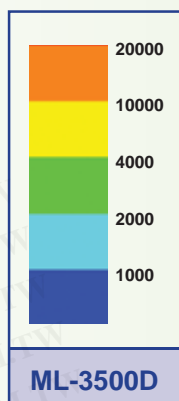
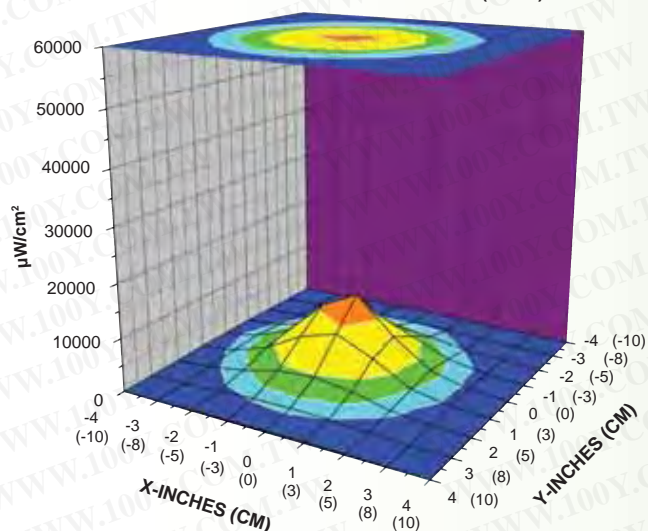


ML-3500S

TOP INTENSITY PROFILE AT 15 IN (38 CM)

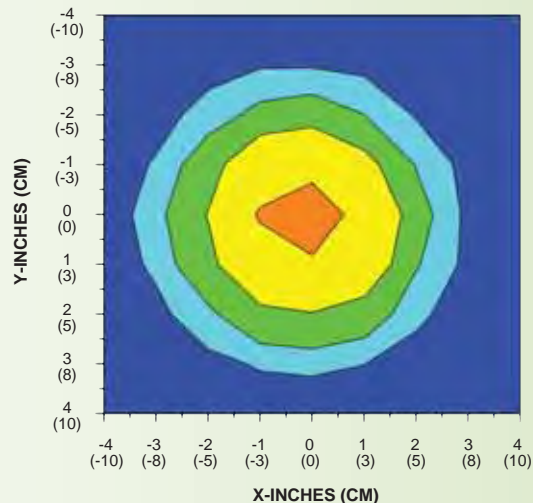


SURFACE CONTOUR PROFILE AT 15 IN (38 CM)

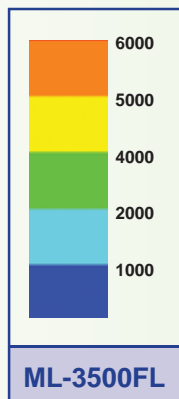
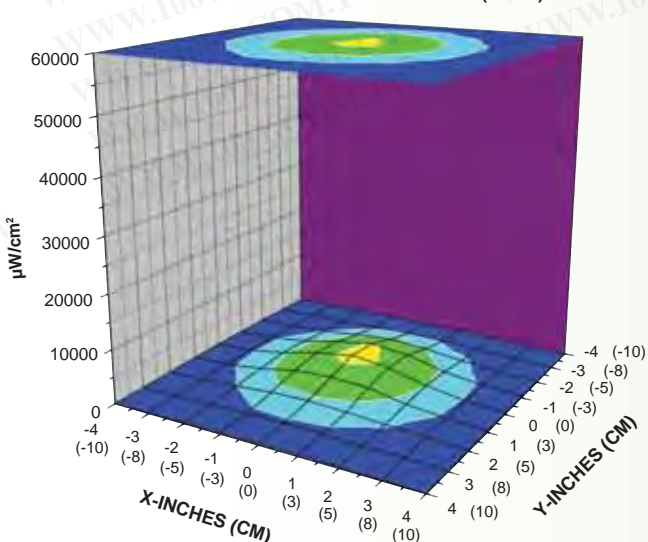


ML-3500D

TOP INTENSITY PROFILE AT 15 IN (38 CM)

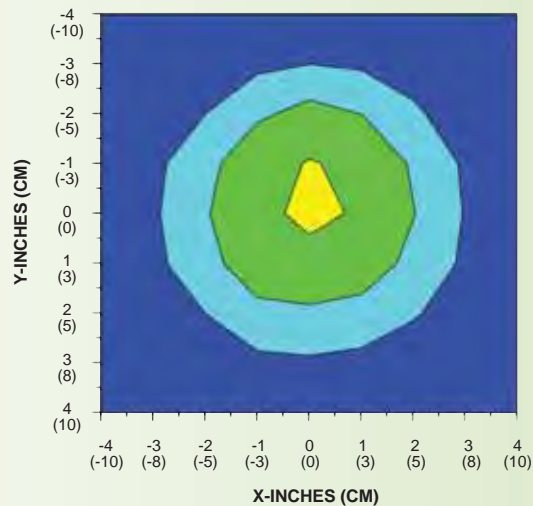


SURFACE CONTOUR PROFILE AT 15 IN (38 CM)



ML-3500FL

TOP INTENSITY PROFILE AT 15 IN (38 CM)



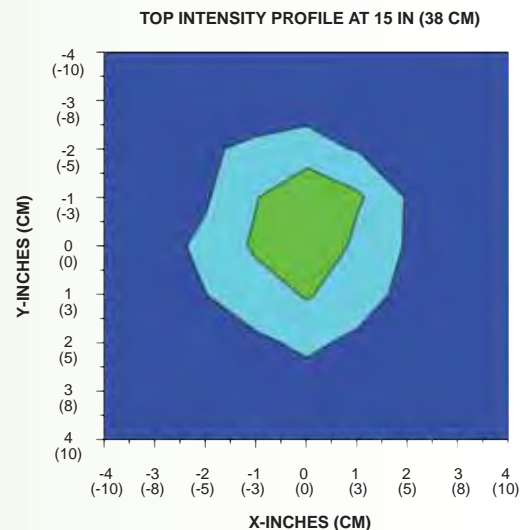
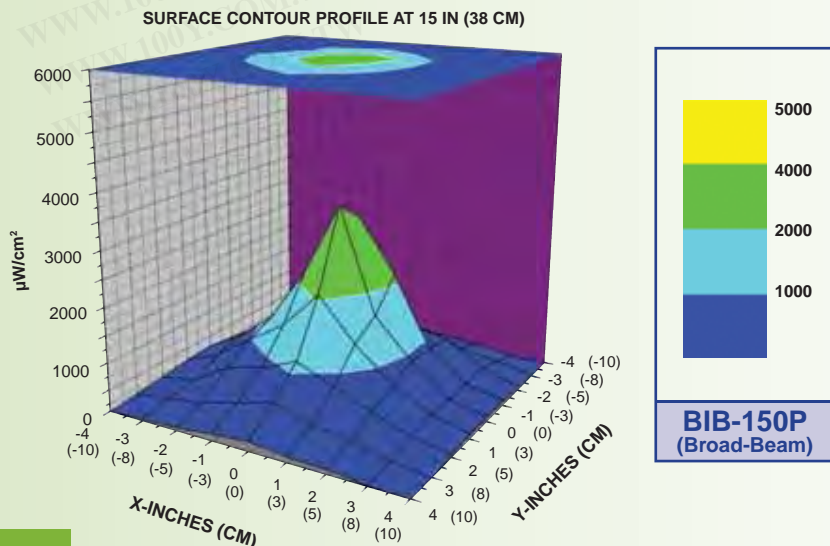
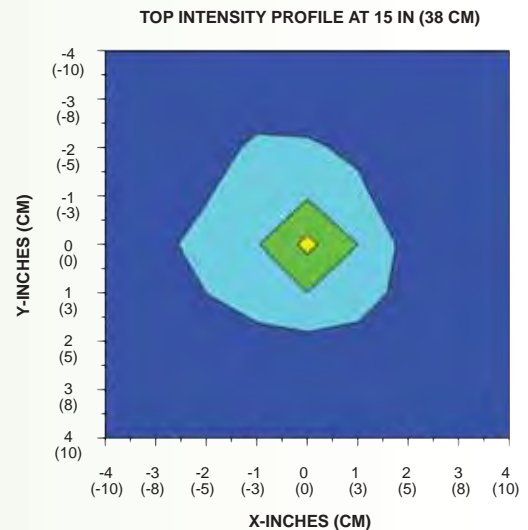
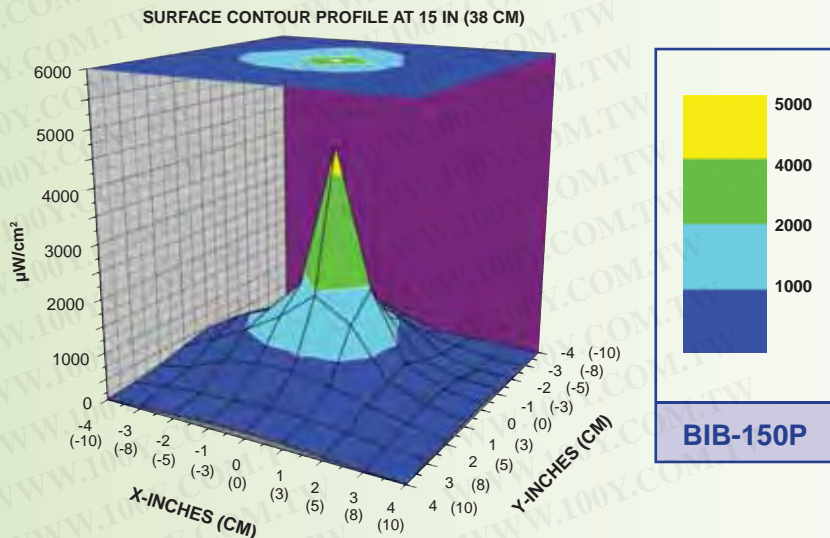
BIB-150P Series

World's Highest Intensity, Self-Ballasted UV-A Lamp

This lamp is a favorite with NDT inspectors because it provides super-high UV-A intensity at an economical price. Its light weight and ergonomic design ensure easy handling for long inspections.

- Unique Built-In-Ballast™ 150-watt bulb eliminates the need for a heavy, external transformer
- Space-age engineering polymer housing is impact-resistant and dent-proof
- Total weight of only 3¼ lbs (1.5 kg). Measures just 9⅝ inches (24 cm) long, including the heat guard/stand
- Vinyl-coated, stainless-steel, wraparound caging protects against burns and acts as a lamp stand
- Special Bulb-Saver™ minimizes bulb movement during handling and reduces the risk of breakage
- Easily meets ASTM UV-A intensity specifications for FPI and MPI
- Available in either concentrated spot or broad-beam versions. Concentrated spot configuration has a nominal steady-state UV-A intensity of 4,500 $\mu\text{W}/\text{cm}^2$ at 15 inches (38 cm). Broad-beam configuration has a nominal steady-state UV-A intensity of 3,000 $\mu\text{W}/\text{cm}^2$ at 15 inches (38 cm).

Both models come standard with an 8 foot (2.4 m) power cord. Lamps are also available with extended length power cords or with a 35 foot (10.7 m) cord housed in a retractable "flying" reel. Visit www.spectroline.com for more details.



SB-100P Series

Designed for Maximum Efficiency and Versatility

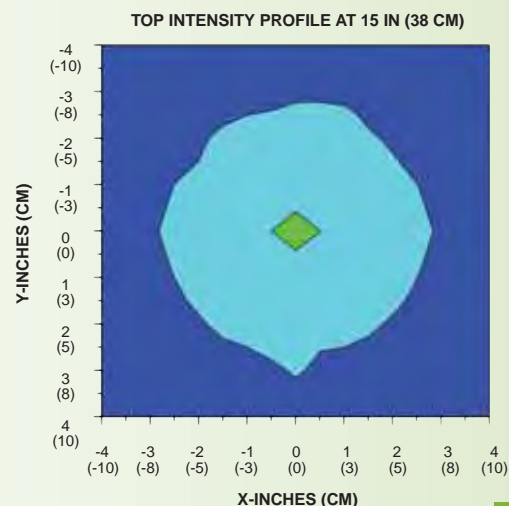
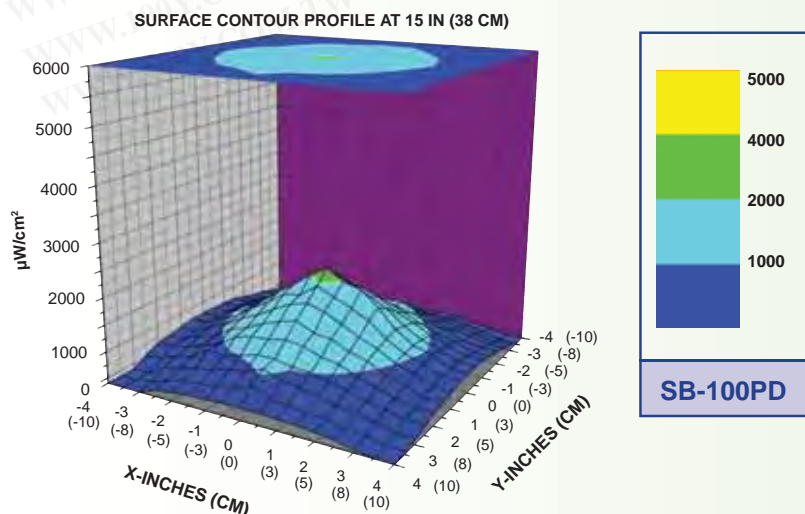
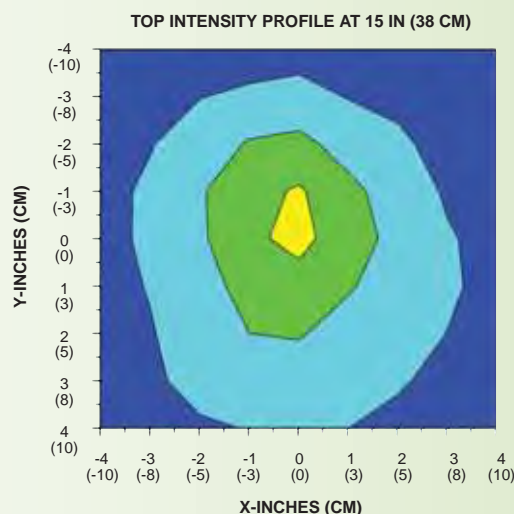
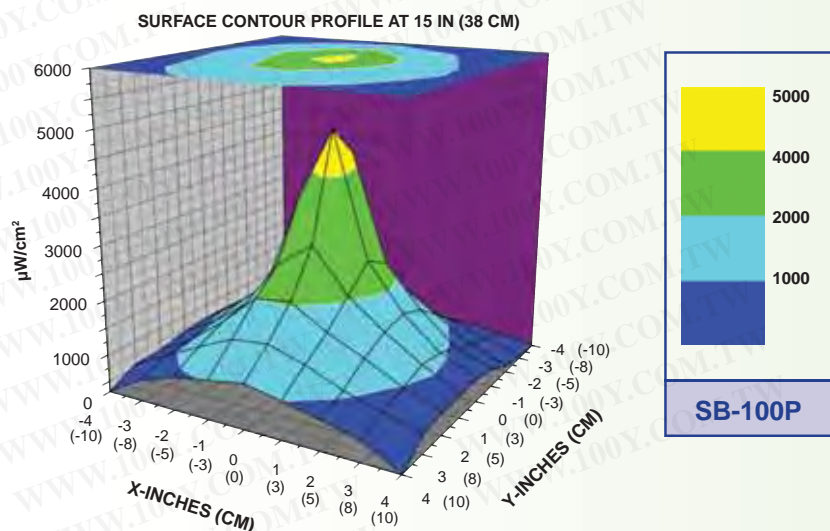
We developed the SB-100P Series UV-A lamps to be very affordable, super-high intensity “workhorses” for MPI and FPI inspections.

- Combines state-of-the-art innovations with proven features. The cord comes out of the staycool, contoured handle to prevent tangling, and the crack-resistant, tempered filter reduces replacement costs significantly.
- Lamp head and transformer base housings are constructed of a special heat-resistant engineering polymer that ensures years of rugged use
- Lamp head is ergonomically designed and detaches easily from the transformer base for comfortable, fatigue-free handling
- Transformer provides maximum power to the unit and features an indicator light to show when the lamp is on
- Easily meets ASTM UV-A intensity specifications for FPI and MPI
- Available in concentrated spot (**SB-100P**) and diffused (**SB-100PD**) versions. Spot configuration has a nominal steady-state UV-A intensity of $4,800 \mu\text{W}/\text{cm}^2$ at 15 inches (38 cm). Diffused configuration has a nominal steady-state UV-A intensity of $2,200 \mu\text{W}/\text{cm}^2$ at 15 inches (38 cm).
- Bulbs feature average rated life of 5,000 hours

Both models come with a special heat-resistant, 3-wire secondary cord. The primary and secondary cords are both 8 feet (2.4 m) long. Lamps are also available with extended length primary or secondary cords, or with a 35 foot (10.7 m) secondary cord housed in a retractable “flying” reel. Visit www.spectroline.com for more details.



Also available: 100S/M-PQL upgraded, Premium Quality Lighting (PQL), 100-watt, medium base, HID replacement spot bulb, for SB-100P Series lamps. Average rated bulb life is 12,000 hours. With upgraded bulb, SB-100P lamp has a nominal steady-state UV-A intensity of $7,500 \mu\text{W}/\text{cm}^2$ at 15 inches (38 cm).



FC-Series

World's Lightest Fan-Cooled, Portable UV-A Lamps

NDT inspectors find that **FC-Series UV-A lamps** make prolonged inspections seem much shorter because they provide cool operation and increased comfort.

- Quiet, *built-in fan* dramatically reduces running temperature, provides more comfort and safety for users, and ensures long bulb life.
- Ergonomically designed with the handle and cord at the balance point of the lamp head. As a result, the lamp can be held for long periods with little user fatigue.
- Special remote lamp switch in the pistol grip prevents accidental shutoff, while separate fan control switch allows for safe cool-down.
- Lamp head is housed in a super-strong engineering polymer that is dent-proof and impact-resistant. Weighs just $3\frac{5}{8}$ lbs (1.6 kg).
- Easily meets ASTM UV-A intensity specifications for FPI and MPI
- Bulb features average rated life of 5,000 hours

The **FC-100** comes with a 100-watt bulb, available in concentrated spot (FC-100) and diffused filter (FC-100D) versions. Spot configuration has a nominal steady-state UV-A intensity of $4,800 \mu W/cm^2$ at 15 inches (38 cm). Diffused configuration has a nominal steady-state UV-A intensity of $2,200 \mu W/cm^2$ at 15 inches (38 cm). Both lamps come with 8 foot (2.4 m) primary and secondary cords. Lamp head weighs just $3\frac{5}{8}$ lbs (1.6 kg).

The **FC-150** with a Built-In-Ballast™ 150-watt concentrated spot bulb has a nominal steady-state UV-A intensity of $4,500 \mu W/cm^2$ at 15 inches (38 cm), has an 8 foot (2.4 m) power cord. Lamp head weighs just $3\frac{1}{2}$ lbs (1.6 kg).

The **FC-100M** has the same specifications as the FC-100 model, but is a direct replacement lamp for use with Magnaflux® magnetic particle machines.

Models are also available with extended length primary or secondary cords, or with a 35 foot (10.7 m) secondary cord housed in a retractable "flying" reel. Visit www.spectroline.com for more details.



CE

FC-100

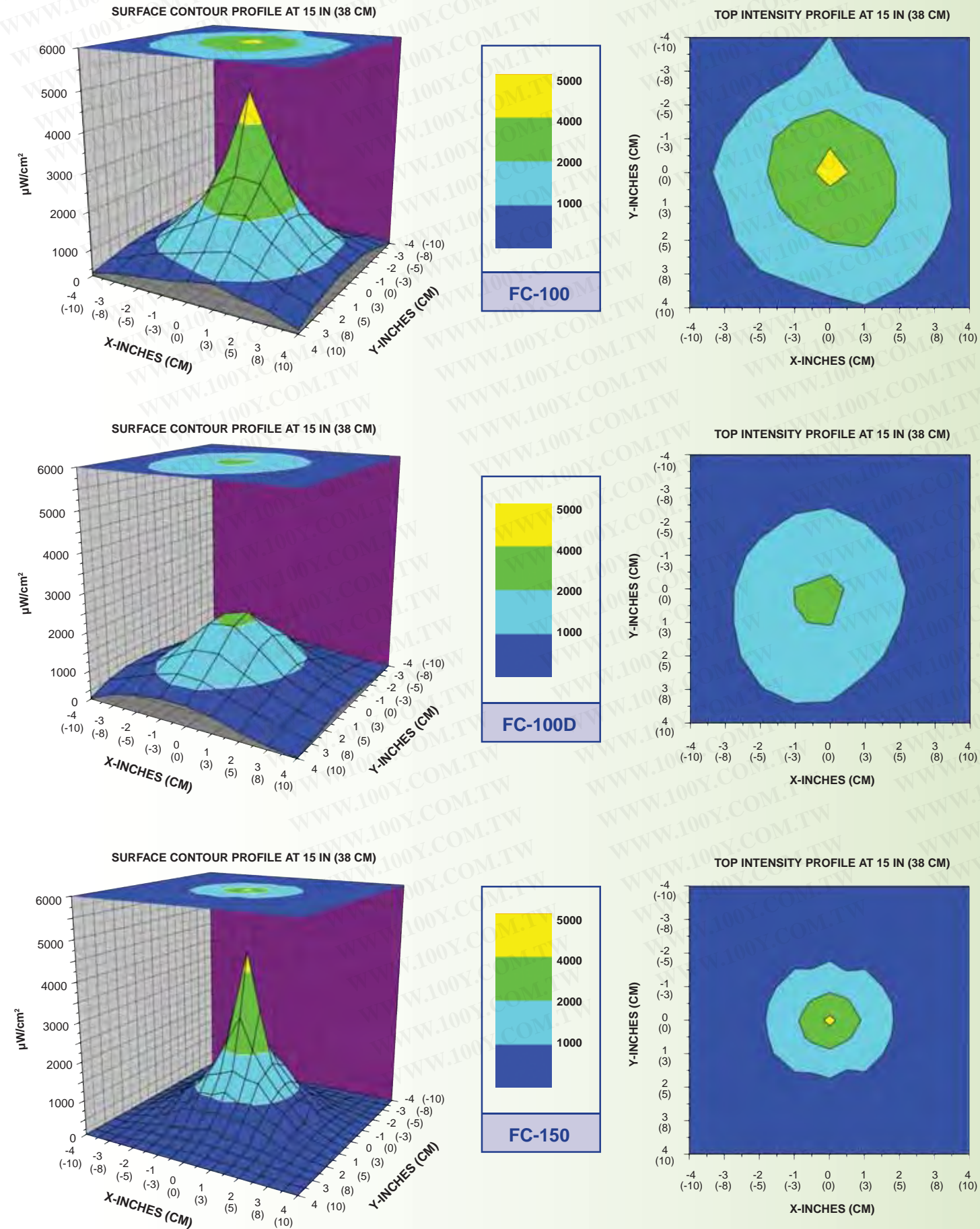


CE

FC-150

Also available: 100S/M-PQL upgraded, Premium Quality Lighting (PQL), 100-watt, medium base, HID replacement spot bulb, for FC-100 Series lamps. Average rated bulb life is **12,000 hours**. With the upgraded bulb, lamp has a nominal steady-state UV-A intensity of $7,500 \mu W/cm^2$ at 15 inches (38 cm).

Magnaflux® is a registered trademark of Magnaflux Corporation



C-100PA Series

Compact, Lightweight, High-Intensity UV-A Lamp for NDT Inspections

Compact lamp head provides users with maximum comfort. Easily fits in tight places that are taboo to larger lamps, making it ideal for spotting surface flaws in confined areas.



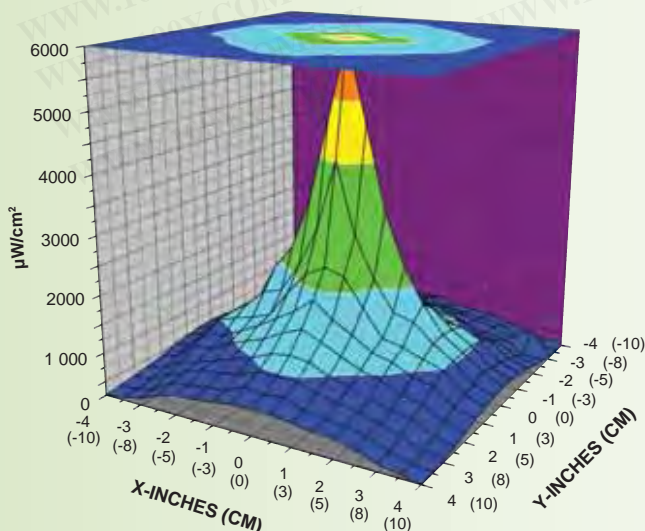
- This 100-watt lamp is powered by a magnetic ballast encapsulated in a high-impact plastic housing.
- Compact lamp head measures just 4½ inches (11 cm) wide and weighs only 1⅝ lbs (0.7 kg)
- Features a spot bulb with a nominal steady-state UV-A intensity of 6,000 $\mu\text{W}/\text{cm}^2$ at 15 inches (38 cm)
- Flexible, heat-resistant filter holder virtually eliminates filter movement during use, reduces the risk of breakage and prevents any visible light leakage
- Constructed of anodized aluminum with a stay-cool pistol grip for extra safety and long life
- Easily meets ASTM UV-A intensity specifications for FPI and MPI
- Bulb features average rated life of 5,000 hours

C-100PA comes with 8 foot (2.4 m) primary and 8 foot secondary cords

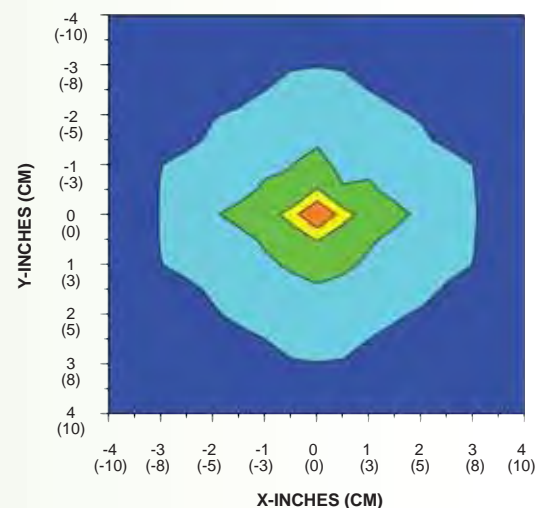
C-100PAR comes with 8 foot (2.4 m) primary cord and 35 foot (10.7 m) retractable secondary cord in "flying reel". Also features attached FP-50 filter protector/lamp stand.

C-100PAX comes with 8 foot (2.4 m) primary and 20 foot (6.1 m) secondary cords

SURFACE CONTOUR PROFILE AT 15 IN (38 CM)



TOP INTENSITY PROFILE AT 15 IN (38 CM)



CH-50P/12

Portable and Very Affordable High-Intensity UV-A Lamp

Battery-operated lamp delivers UV-A light in tight areas that defy conventional lamps. "Instant-on" operation enables you to perform inspections immediately!

- Features a 50-watt bulb with nominal steady-state UV-A intensity of $1,200 \mu\text{W}/\text{cm}^2$ at 15 inches (38 cm)
- Lamp head measures only $5\frac{1}{4} \times 7\frac{1}{2}$ inches (13 x 19 cm) at its widest point, so it's easy to inspect in confined areas
- Battery-operated unit weighs a mere 2 lbs (0.9 kg)
- Very economical to operate, because it consumes 50% less power than competitors' 12-volt lamps
- Housing is made of a super-tough engineering polymer that's impact-resistant and dent-proof
- Includes a 4 foot (1.2 m) cord with cigarette-lighter plug and a 1-foot (0.3 m) adapter cord with alligator clips. Connects to any 12-volt battery or cigarette-lighter outlet. A 12 foot (3.6 m) extension cord is also provided.



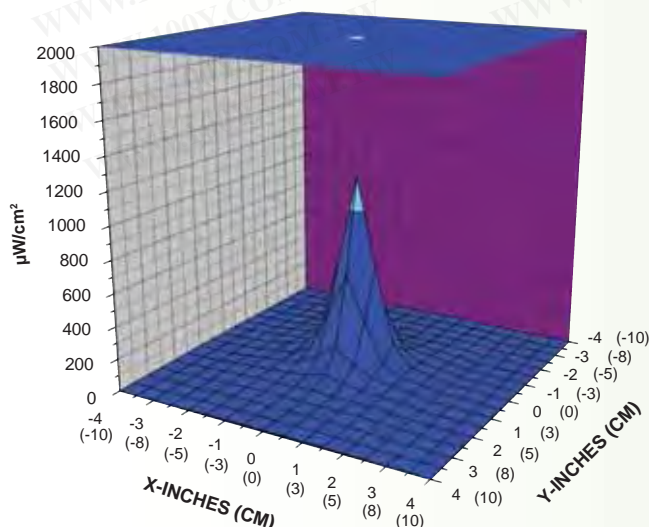
CE



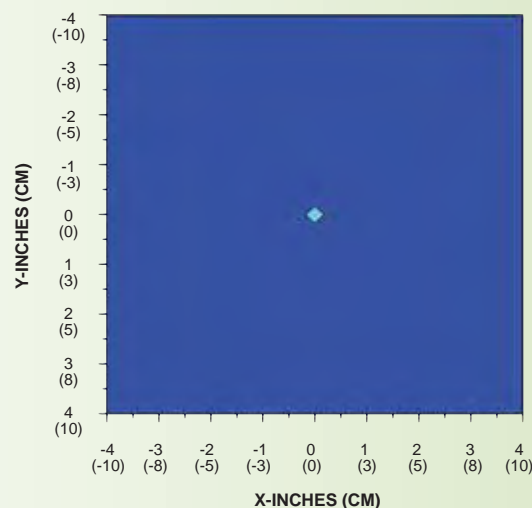
Optional BP-12A battery pack

Note: A compact, lightweight battery pack (model BP-12A) is available as an accessory for the CH-50P/12. It comes with a 12V, 7 amp/hr sealed lead acid rechargeable battery, a charger and a nylon case with belt loop and shoulder strap. Permits field use of the lamp in areas where there are no AC outlets.

SURFACE CONTOUR PROFILE AT 15 IN (38 CM)



TOP INTENSITY PROFILE AT 15 IN (38 CM)



UV-400 Series SuperFlood™

Our Most Powerful UV-A Flood Lamps Designed Specifically for NDT

These super-powerful and versatile lamps have been specially engineered for fluorescent penetrant and magnetic particle inspection, parts degreasing inspections and wash station inspections.

- Powerful, 400-watt metal halide bulb, combined with tempered, heat-resistant low solarization UV filters provide the highest intensity over the largest area
- Easily mounts over automated magnetic particle systems or above penetrant inspection booths for the most accurate inspections of even the largest parts
- Unique twin-filter system eliminates hazardous UV-B and UV-C radiation escaping from lamp
- Compact design and built-in mounting features allow lamps to be positioned anywhere – even in previously inaccessible areas

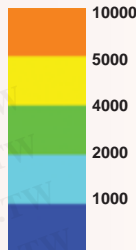
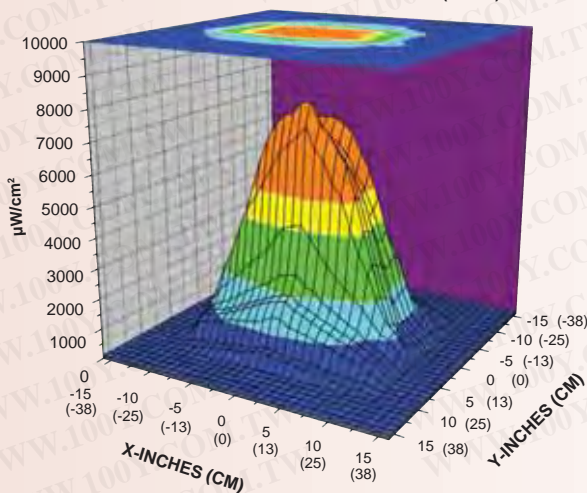


UV-400A features a concentrated-beam reflector designed to assure the highest concentrated UV-A intensity available. It has a nominal steady-state UV-A intensity of $8,000 \mu\text{W}/\text{cm}^2$ at lamp center, measured at 15 inches (38 cm). Irradiates an area as large as $16" \times 10"$ (41 cm x 25 cm), producing a nominal steady-state UV-A irradiance of not less than $2,000 \mu\text{W}/\text{cm}^2$.

UV-400B features a unique broad-beam reflector designed to provide NDT inspectors with maximum uniformity of coverage over the largest area. It has a nominal steady-state UV-A intensity of $4,000 \mu\text{W}/\text{cm}^2$ at lamp center, measured at 15 inches (38 cm). The lamp irradiates an area as wide as $20" \times 12"$ (51 cm x 31 cm) with unmatched uniformity, producing a nominal steady-state UV-A irradiance of not less than $2,000 \mu\text{W}/\text{cm}^2$.

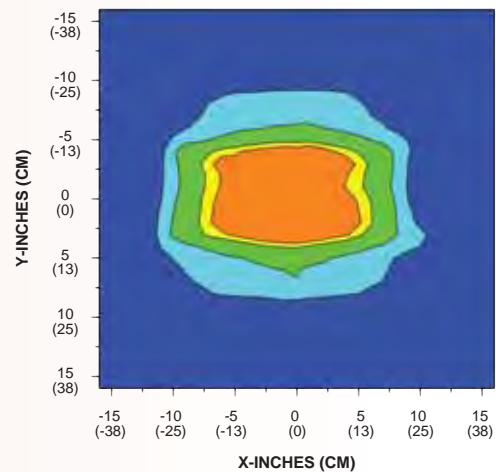


SURFACE CONTOUR PROFILE AT 15 IN (38 CM)

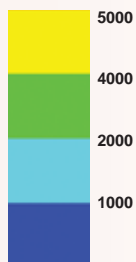
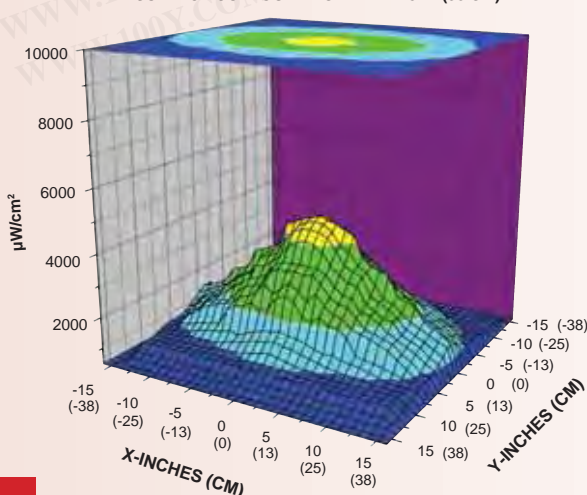


UV-400A

TOP INTENSITY PROFILE AT 15 IN (38 CM)

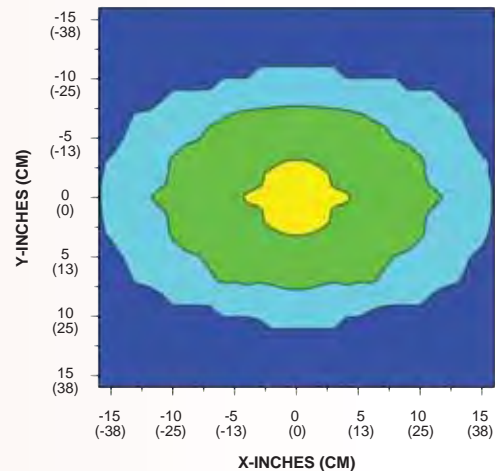


SURFACE CONTOUR PROFILE AT 15 IN (38 CM)



UV-400B

TOP INTENSITY PROFILE AT 15 IN (38 CM)



Introducing Our Newest LED Light

The importance of high-intensity UV-A black lights for proper magnetic particle or always existed. Our new blue light inspection lamps address this concern. While still no quick pre-inspection or screening of fluorescent particles in operating conditions with



OPX-450

OPTIMAX™ 450 Rechargeable Blue Light LED Flashlight

(U.S. Patent No. 5,905,268; other patents pending)

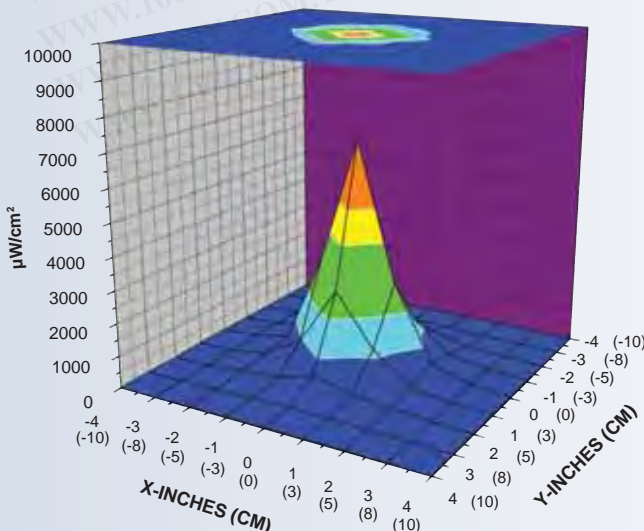
This versatile, cordless inspection lamp features a high-intensity, 450 nm blue light LED, a black anodized lamp body and our patented, thin-film dichroic lens to filter out long-wave visible light.

- Nominal steady-state blue light intensity of $7,000 \mu\text{W}/\text{cm}^2$ at 15 inches (38 cm)
- 50,000-hour LED service life
- Electronic Intensity Stabilizer assures consistent performance. Beam strength will not weaken between charges!
- Instant-on operation. Lamp reaches full intensity immediately!
- Lightweight, cordless, ergonomic design eliminates fatigue
- Portable and rugged. Anodized aluminum lamp body minimizes corrosion and stands up to years of heavy use
- Powered by a rechargeable NiMH battery. Provides 90 minutes of continuous inspection between charges.

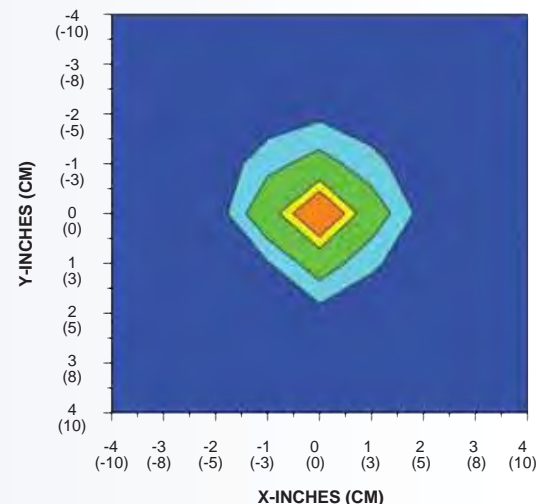


Comes complete with smart AC and DC chargers, yellow contrasting spectacles, belt holster and rugged, padded carrying case. AC charger available in 120V, 230V, 240V and 100V models.

SURFACE CONTOUR PROFILE AT 15 IN (38 CM)



TOP INTENSITY PROFILE AT 15 IN (38 CM)



Sources...in Blue Wavelengths!

penetrant NDT inspection is well established. However, a concern for UV safety has substitute for UV-A lamps, blue light does provide the safety and convenience desired for ambient light, saving time and limiting the use of black lights to only when necessary.

TRI-450

TRITAN™ 450 Multi-LED, Broad-Beam Blue Light Lamp

(U.S. Patent No. 5,905,268; other patents pending)

This lamp features three cool-running, ultra-high flux 450 nm blue light LEDs with a broad-beam configuration. This powerful lamp provides a wider coverage area than conventional inspection lamps, while its compact head design allows access into areas inaccessible to larger inspection lamps. Ideal for most non-destructive testing applications.

- Nominal steady-state blue light intensity of $5,000 \mu\text{W}/\text{cm}^2$ at 15 inches (38 cm)
- Large 5 inch (13 cm) diameter coverage area at 15 inches (38 cm) with a minimum intensity of $2,000 \mu\text{W}/\text{cm}^2$
- 50,000-hour LED service life
- Rubber bumper with patented thin-film dichroic lens filters out long-wave visible light
- Electronic Intensity Stabilizer ensures consistent LED performance
- Built-in fan keeps LEDs cool to maintain optimum light output during extended use
- Instant-on operation. Lamp reaches full intensity immediately!
- Rugged, ergonomic, angled lamp body provides safe, fatigue-free handling
- Choice of 8 foot (2.4 m) or extra-long 20 foot (6.1 m) power cord with AC plug. Available in 120V, 230V, 240V or 100V models.
- Includes yellow contrasting spectacles

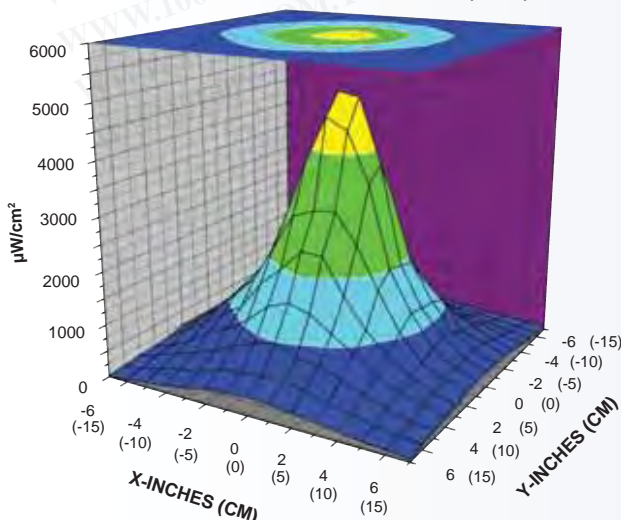


CE

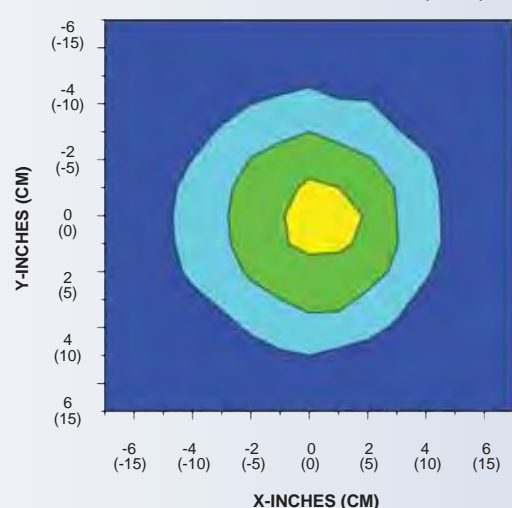


Also available: TRITAN™ 450M portable, battery-operated AC/DC lamp kit. Includes TRITAN 450M blue light LED lamp, rechargeable NiMH battery pack with adjustable shoulder strap and belt loop, AC and DC cord sets, smart AC charger, yellow contrasting spectacles and soft, lightweight carrying case. AC charger available in 120V, 230V, 240V or 100V versions.

SURFACE CONTOUR PROFILE AT 15 IN (38 CM)



TOP INTENSITY PROFILE AT 15 IN (38 CM)



XRP-3000 AccuMAX™

Digital Radiometer/Photometer

Features an advanced microprocessor-controlled readout unit with a dual-wavelength sensor detector to measure both ultraviolet and visible light.

- Large, easy-to-read LCD screen
- Provides readouts for UV-A, visible irradiance or radiance
- Overall accuracy greater than $\pm 5\%$ per NIST standards
- Choice of direct or USB cable connection between sensor detector and readout unit
- Automatic zeroing, integration and signal hold
- Excellent cosine response
- User-defined power save and automatic shutoff
- Rugged meter housing features removable, protective rubber boot for better grip and to help prevent accidental breakage
- Sealed sensor housing and USB connection with water-resistant adapter
- Compact, lightweight and battery-operated for convenient use in the factory, field or anywhere measurements are needed
- Complies with ASTM specifications for MPI and FPI
- Comes complete with readout unit, dual-wavelength sensor detector, USB cable with water-resistant adapter, protective rubber boot, two 9V alkaline batteries and padded carrying case.

SPECIFICATIONS

Readout Unit (XR-1000)

Resolution	4-digit autoranging display
Screen	128 x 64 dot pixel chip on glass STN transmissive monochrome LCD 2.8 in (7.1 cm) diagonal illuminated (backlit)
Sample Rate	7.5 Hz (single sensor) 15 Hz (dual sensor)
Read Update	2 Hz
Overall Accuracy	Better than $\pm 5\%$ with reference to NIST standards
Temperature Coefficient	$\pm 0.025\%/^{\circ}\text{C}$ (0 to 50°C)
Power Requirements	Two 9V alkaline batteries (included)
Length	7.75 in (19.7 cm)
Width	4.25 in (10.8 cm)
Thickness	1.25 in (3.2 cm)
Weight	0.8 lb (360 g)

Dual UV-A/Visible Sensor Detector (XDS-1000)

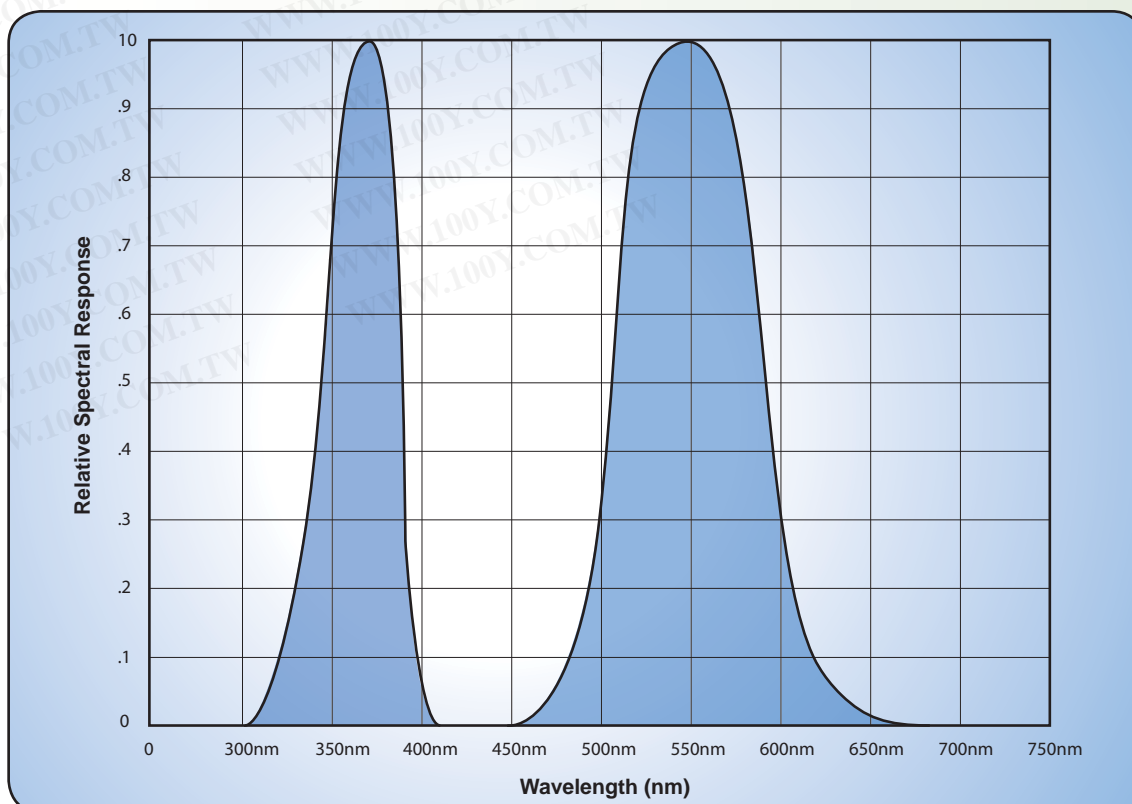
Irradiance Range	
UV-A Sensor	0-100 mW/cm ² (0-100,000 $\mu\text{W}/\text{cm}^2$)
Visible Sensor	0-5,300 lux (0-500 fc)
Spectral Range	
UV-A Sensor	320-400 nm
Visible Sensor	460-675 nm
Dimensions	
Length	4.75 in (12.1 cm)
Width	2.0 in (5.1 cm)
Thickness	7/8 in (2.2 cm)
Weight	0.22 lb (100 g)
USB Cable Length	5 ft (1.5 m)



XR-1000 readout unit with dual-wavelength sensor detector connected directly to unit



XR-1000 readout unit with dual-wavelength sensor detector connected to unit via USB cable



DM-365XA
Digital UV-A Radiometer

Provides increased accuracy for more repeatable results.

- Measures UV-A light sources with overall accuracy of $\pm 5\%$ per NIST standards
- Autozeroing, excellent linearity and cosine response, solid-state design, compact, durable, simple operation, battery-level indicator
- Sealed silicone photodiode protects against shock and humidity
- Sensor housing is constructed with series of baffles and unique self-sealing mechanism to eliminate light leakage
- Compact, lightweight and battery operated so measurements can be taken anywhere
- Complies with ASTM specifications for MPI and FPI



SPECIFICATIONS

Readout Unit	
Resolution	10 $\mu\text{W}/\text{cm}^2$
Screen	4½ digit, 7 segment, LED display
	0.5 in (1.3 cm) high
Overall Accuracy	Better than $\pm 5\%$ with reference to NIST standards
Temperature Coefficient	$\pm 0.025\%/^{\circ}\text{C}$ (0 to 50°C)
Irradiance Range	0-19,900 $\mu\text{W}/\text{cm}^2$
Spectral Range	320-400 nm
Power Requirements	Two "AA" alkaline batteries (included)
Length	7¼ in (18.4 cm)
Width	3.5 in (8.9 cm)
Thickness	2 in (5.1 cm)
Weight	1 lb (0.45 kg)
Sensor Detector	
Length	3 in (7.6 cm)
Width	2 in (5.1 cm)
Thickness	0.70 in (1.8 cm)
Weight	1¼ lb (0.57 kg)
Cord Length	3 ft (91.4 cm)

REPLACEMENT PARTS & ACCESSORIES



BP-12A

BATTERY PACK, Complete with RB-12S Smart Charger, 12 Volt Rechargeable NiMH Battery and Nylon Carrying Case for CH-50P/12 and MAXIMA™ ML-3500 Series Lamps



BP-20

BATTERY PACK, Complete with BR-100 Smart Charger, 12 Volt Rechargeable NiMH Battery and Nylon Carrying Case for TRITAN™ TRI-365M and TRI-450M AC/DC Lamp Kits



CC-75

CARRYING CASE
for CH-50P/12 Lamp



CC-120A

CARRYING CASE
for BIB-150P Series,
FC-Series and SB-100P
Series Lamps



CC-350

CARRYING CASE
for MAXIMA™ ML-3500
Series Lamps



CC-365

CARRYING CASE
for OPTIMAX™ OPX-365
and OPX-450 Flashlights



CC-370A

SOFT CARRYING CASE
for TRITAN™ TRI-365M and
TRI-450M AC/DC Lamps



UVS-30

SPECTACLES,
UV-Absorbing



UVS-40

SPECTACLES,
Fluorescence-Enhancing



UVG-50

GOGGLES,
UV-Absorbing

Using genuine Spectrolin® replacement parts ensures that lamps will operate at their optimum performance.

REPLACEMENT PARTS & ACCESSORIES



100S

SPOT BULB, Ad-Medium Base, 100 Watt for SB-100P and FC-Series Lamps



100S/M

SPOT BULB, Medium Base, 100 Watt for SB-100P and FC-Series Lamps



100S/M-PQL

UPGRADED, PREMIUM QUALITY LIGHTING SPOT BULB, Medium Base, 100 Watt for SB-100P and FC-100 Series Lamps



BLE-35PRA

MDL BULB/POLISHED REFLECTOR ASSEMBLY for MAXIMA™ ML-3500 Series Lamps



BLE-35RA

MDL BULB/COATED REFLECTOR ASSEMBLY for MAXIMA™ ML-3500 Series Lamps



BLE-35RAF

MDL BULB/ANODIZED REFLECTOR ASSEMBLY for MAXIMA™ ML-3500 Series Lamps



BLE-50/12

BULB, Set of three, for CH-50P/12 Lamp



BLE-100S/MC

SPOT BULB, Compact, Medium Base, 100 Watt, for C-100PA Series Lamps



BLE-125B

BULB, 125 Watt BLB (Non-Certified) for SB-125 Series Lamps. **Manufactured by Phillips**



BLE-125B/C

BULB, 125 Watt BLB (Certified) for SB-125 Series Lamps. **Manufactured by Phillips**

Using genuine Spectrolite® replacement parts ensures that lamps will operate at their optimum performance.



BLE-150BS-115/M

BROAD-BEAM BULB, Self-Ballasted, 150 Watt for BIB-150P Series Lamps (115 volt version)



BLE-150CS-100/M

CONCENTRATED SPOT BULB, Self-Ballasted, 150 Watt for BIB-150P Series Lamps (100 volt version)



BLE-150CS-115/M

CONCENTRATED SPOT BULB, Self-Ballasted, 150 Watt for BIB-150P Series Lamps (115 volt version)



BLE-150CS-230/M

CONCENTRATED SPOT BULB, Self-Ballasted, 150 Watt for BIB-150P Series Lamps (230 volt version)



BLE-150FC-115/M

CONCENTRATED SPOT BULB, Self-Ballasted, 150 Watt for FC-150 Lamp (115 volt version)



BLE-150FC-230/M

CONCENTRATED SPOT BULB, Self-Ballasted, 150 Watt for FC-150 Lamp, (230 volt version)



BLE-400

METAL HALIDE BULB, 400 Watt for SuperFlood™ UV-400 Series Lamps



119584

MDL BULB, 35 Watt for MAXIMA™ ML-3500 Series Lamps

Using genuine Spectroline® replacement parts ensures that lamps will operate at their optimum performance.

REPLACEMENT PARTS & ACCESSORIES



120344

COATED SPOT REFLECTOR for MAXIMA™ ML-3500 Series Lamps



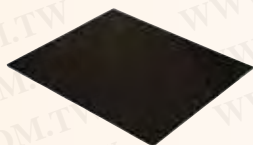
120514

ANODIZED FLOOD REFLECTOR for MAXIMA™ ML-3500 Series Lamps



123378

POLISHED REFLECTOR for MAXIMA™ ML-3500 Series Lamps



2F110

UV-A FILTER for SuperFlood™ UV-400 Series Lamps



2F400B

UV-B BLOCKING FILTER for SuperFlood™ UV-400 Series Lamps



2F123

FILTER for CH-50P/12 and C-100PA Series Lamps



2F958

FILTER for BIB-150P Series, FC-Series and MAXIMA™ ML-3500 Series Lamps



2F350

DIFFUSING FILTER for FC-Series and MAXIMA™ ML-3500 Series Lamps



DF-365

DIFFUSING FILTER for OPTIMAX™ OPX-365 Flashlight

Using genuine Spectroline® replacement parts ensures that lamps will operate at their optimum performance.



FP-50
FILTER PROTECTOR/LAMP STAND for
C-100PA Series Lamps



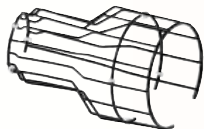
FP-175
FILTER PROTECTOR/LAMP STAND for BIB-150PR,
FC-Series and MAXIMA™ Series Lamps



FP-365
FILTER PROTECTOR with Rubber Bumper/Borofloat®
Glass for TRITAN™ 365 Series Lamps



FP-450
FILTER PROTECTOR with Rubber Bumper/Dichroic
Filter for TRITAN™ 450 Series Lamps



HGS-100A
HEAT GUARD/STAND for SB-100P Series Lamps



HGS-150A
HEAT GUARD/STAND for BIB-150P and
BIB-150PX Lamps



VF-100A
SPEC-STIK™ VERIFICATION FIXTURE for All
Spectroline® Sensors, as well as HID, TRITAN™
and OPTIMAX™ Series Lamps.

NOTE: Lamp mounting accessories for TRITAN™
and OPTIMAX™ Series Lamps are sold separately
(see LH-200 and LH-300)



LH-200
LAMP HOLDER for OPTIMAX™ OPX-365
and OPX-450 Flashlights (for use with VF-100A)



LH-300
LAMP HOLDER for TRITAN™ Series Lamps
(for use with VF-100A, FA-100, WM-100, B-6 and W-6)

Using genuine Spectroline® replacement parts ensures that lamps will operate at their optimum performance.

REPLACEMENT PARTS & ACCESSORIES



LH-600

HOLSTER for OPTIMAX™ OPX-365 and
OPX-450 Flashlights



WM-100

WALL MOUNTING BRACKET for All Spectroline® HID
and TRITAN™ Series Lamps



124826

CORD SET, 2 Foot, 7 Pin for MAXIMA™ ML-3500
Series Lamps (12V DC version)



124827

CORD SET, 8 Foot, 7 Pin for MAXIMA™ ML-3500
Series Lamps (230V version)



124828

CORD SET, 8 Foot, 7 Pin for MAXIMA™ ML-3500
Series Lamps (115V and 100V versions)



RB-12S

SMART BATTERY CHARGER for BP-12A
Battery Pack



BR-100

SMART BATTERY CHARGER for BP-20
Battery Pack



PSA-200

POWER SUPPLY ADAPTER with a 12V DC charging
cord for TRITAN™ TRI-365M and TRI-450M Series
Lamps

Using genuine Spectroline® replacement parts ensures that lamps will operate at their optimum performance.



RB-300
SMART AC CHARGER for OPTIMAX™
OPX-365 and OPX-450 Flashlights



RB-300DC
12V DC CHARGER for OPTIMAX™
OPX-365 and OPX-450 Flashlights



125608
BATTERY STICK with Tailcap for OPTIMAX™
OPX-365 and OPX-450 Flashlights



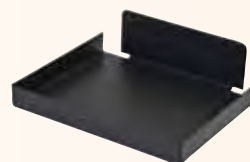
XCB-100
WATER-RESISTANT USB CABLE with adapter for
AccuMAX™ Meter



XCC-100
CARRYING CASE for AccuMAX™ XRP-3000 Meter



XRB-100
RUBBER BOOT for AccuMAX™ XR-1000 Readout Unit



AB-100
ADAPTER BRACKET for Mounting Transformer-Based
Spectroline® HID Lamps onto a Magnaflux® Wet
Horizontal Mag Machine



AF-100
ABSORPTION FILTER/SPLASH GUARD ASSEMBLY
for SB-100P, BIB-150P, FC- and MAXIMA™ ML-3500
Series Lamps (for rubber filter holder design)

Using genuine Spectroline® replacement parts ensures that lamps will operate at their optimum performance.

REPLACEMENT PARTS & ACCESSORIES

勝特力材料 886-3-5753170
勝特力电子(上海) 86-21-34970699
勝特力电子(深圳) 86-755-83298787
[Http://www.100y.com.tw](http://www.100y.com.tw)



AF-100A

ABSORPTION FILTER/SPLASH GUARD ASSEMBLY
for SB-100P, BIB-150P, FC- and MAXIMA™ ML-3500
Series Lamps (for plastic filter holder design)



AF-125

ABSORPTION FILTER/SPLASH GUARD ASSEMBLY
for SB-125 Lamp



FA-100

FLEXIBLE ARM for All Spectroline® HID and
TRITAN™ Series Lamps



B-6

BENCH MOUNT for All Spectroline® HID and
TRITAN™ Series Lamps



W-6

BENCH MOUNT for All Spectroline® HID and
TRITAN™ Series Lamps

Using genuine Spectroline® replacement parts ensures that lamps will operate at their optimum performance.