

Cylindrical Capacitive Proximity Switches



CR Series (DC 3-wire) PRODUCT MANUAL

For your safety, read and follow the considerations written in the instruction manual, other manuals and Autonics website.

The specifications, dimensions, etc. are subject to change without notice for product improvement. Some models may be discontinued without notice.

Features

- Detect various materials including metal, iron, stone, plastic, water, and grain
- Built-in sensitivity adjuster for convenient configuration
- Operation indicator (red)
- Ideal for level detection and position control

Safety Considerations

- Observe all 'Safety Considerations' for safe and proper operation to avoid hazards.
- ⚠ symbol indicates caution due to special circumstances in which hazards may occur.

⚠ Warning Failure to follow instructions may result in serious injury or death.

01. Fail-safe device must be installed when using the unit with machinery that may cause serious injury or substantial economic loss. (e.g. nuclear power control, medical equipment, ships, vehicles, railways, aircraft, combustion apparatus, safety equipment, crime/disaster prevention devices, etc.)

Failure to follow this instruction may result in personal injury, economic loss or fire.

02. Do not use the unit in the place where flammable/explosive/corrosive gas, high humidity, direct sunlight, radiant heat, vibration, impact, or salinity may be present.

Failure to follow this instruction may result in explosion or fire.

03. Do not disassemble or modify the unit.

Failure to follow this instruction may result in fire.

04. Do not connect, repair, or inspect the unit while connected to a power source.

Failure to follow this instruction may result in fire.

05. Check 'Connections' before wiring.

Failure to follow this instruction may result in fire.

⚠ Caution Failure to follow instructions may result in injury or product damage.

01. Use the unit within the rated specifications.

Failure to follow this instruction may result in fire or product damage.

02. Use a dry cloth to clean the unit, and do not use water or organic solvent.

Failure to follow this instruction may result in fire.

Cautions during Use

- Follow instructions in 'Cautions during Use'. Otherwise, it may cause unexpected accidents.
- 12 - 24 VDC \Rightarrow power supply should be insulated and limited voltage/current or Class 2, SELV power supply device.
- Use the product, after 0.8 sec of supplying power.
- Wire as short as possible and keep away from high voltage lines or power lines, to prevent surge and inductive noise.
Do not use near the equipment which generates strong magnetic force or high frequency noise (transceiver, etc.).
In case installing the product near the equipment which generates strong surge (motor, welding machine, etc.), use diode or varistor to remove surge.
- This unit may be used in the following environments.
 - Indoors (in the environment condition rated in 'Specifications')
 - Altitude max. 2,000 m
 - Pollution degree 2
 - Installation category II

Cautions for Installation

- Install the unit correctly with the usage environment, location, and the designated specifications.
- Do NOT impacts with a hard object or excessive bending of the wire lead-out. It may cause damage the water resistance.
- Do NOT pull the $\varnothing 3.5$ mm cable with a tensile strength of 25 N, the $\varnothing 4$ mm cable with a tensile strength of 30 N or over and the $\varnothing 5$ mm cable with a tensile strength of 50 N or over. It may result in fire due to the broken wire.
- When extending wire, use AWG 22 cable or over within 200 m.

勝特力電材超市-龍山店 886-3-5773766
 勝特力電材超市-光復店 886-3-5729570
 勝特力電子(上海) 86-21-34970699
 勝特力電子(深圳) 86-755-83298787
<http://www.100y.com.tw>

Ordering Information

This is only for reference, the actual product does not support all combinations .
For selecting the specified model, follow the Autonics website.

CR ① - ② ③ ④

① DIA. of sensing side

Number: DIA. of sensing side (unit: mm)

③ Power supply

D: 12 - 24 VDC ≡

② Sensing distance

Number: Sensing distance (unit: mm)

④ Control output

N: NPN Normally open

N2: NPN Normally closed

P: PNP Normally open

Product Components

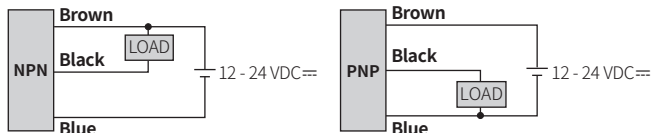
	Product	Instruction manual	Nut	Washer	VR Driver
CR18	× 1	× 1	× 2	-	× 1
CR30	× 1	× 1	× 2	× 1	× 1

Sold Separately

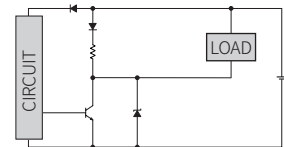
- M12 Connector cable: C□D(H)3-□
- Spatter protection cover: P90-M□
- Fixed bracket: P90-R□

Connections

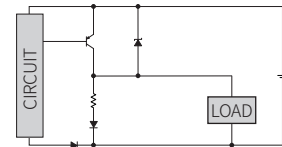
■ Cable type



■ Inner circuit (NPN output)



■ Inner circuit (PNP output)



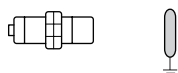
Operation Timing Chart

		Normally open	Normally closed
Sensing target	Presence		
	Nothing		
Load	Operation		
	Return		
Output voltage	NPN output		
	PNP output		
Operation indicator (red)			

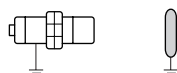
Grounding

- The sensing distance is varied by grounding status of the capacity proximity switch or the target. Check the material when installing the sensor and selecting the target.
- When the capacity proximity switch and the target are grounded, the electric field is concentrated on the detection surface and the sensing distance may increase.
- If it is not grounded, the electric field radiates to the sensing surface in various directions, and the target is continuously charged with electric charge, the sensing distance may be shorten.

■ CR18-8D□



■ CR30-15D□



Specifications

Installation	Non-flush type	
Model	CR18-8D□	CR30-15D□
DIA. of sensing side	Ø 18 mm	Ø 30 mm
Sensing distance ⁰¹⁾	8 mm	15 mm
Setting distance	0 to 5.6 mm	0 to 10.5 mm
Hysteresis	≤ 20 % of sensing distance	
Standard sensing target: iron	50 × 50 × 1 mm	
Response frequency ⁰²⁾	50 Hz	
Affection by temperature	≤ ± 20 % for sensing distance at ambient temperature 20 °C	
Indicator	Operation indicator (red)	
Approval	ERC	ERC
Unit weight (package)	≈ 76 g (≈ 88 g)	≈ 206 g (≈ 243 g)

01) Based on grounding status of the standard target.

02) The response frequency is the average value. The standard sensing target is used and the width is set as 2 times of the standard sensing target, 1/2 of the sensing distance for the distance.

Power supply	12 - 24 VDC≡ (ripple P-P: ≤ 10 %), operating voltage: 10 - 30 VDC≡
Current consumption	≤ 15 mA
Control output	≤ 200 mA
Residual voltage	≤ 1.5 V
Protection circuit	Surge protection circuit, reverse polarity protection
Insulation resistance	≥ 50 MΩ (500 VDC≡ megger)
Dielectric strength	Between the charging part and the case : 1,500 VAC ~ 50 / 60Hz for 1 min
Vibration	1 mm double amplitude at frequency 10 to 55 Hz in each X, Y, Z direction for 2 hours
Shock	500 m/s ² (≈ 50 G) in each X, Y, Z direction for 3 times
Ambient temperature	-25 to 70 °C, storage: -30 to 80 °C (no freezing or condensation)
Ambient humidity	35 to 95 %RH, storage: 35 to 95 %RH (no freezing or condensation)
Protection structure	DIA. of sensing side Ø 18 mm: IP66 (IEC standard) / DIA. of sensing side Ø 30 mm: IP65 (IEC standard)
Connection	Cable type
Cable spec.	DIA. of sensing side Ø 18 mm: Ø 4 mm, 3-wire, 2 m DIA. of sensing side Ø 30 mm: Ø 5 mm, 3-wire, 2 m
Wire spec.	AWG 22 (0.08 mm, 60-core), insulator DIA.: Ø 1.25 mm
Material	Standard type cable (black): polyvinyl chloride (PVC)
DIA. of sensing side Ø 18 mm	Case / Nut: PA6
DIA. of sensing side Ø 30 mm	Case / Nut: nickel-plated brass, washer: nickel-plated iron, sensing side: PBT

Sensitivity Adjustment

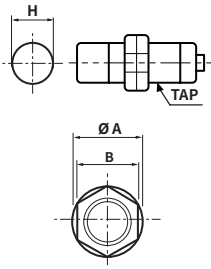
Please turn potentention VR to set sensitivity as below procedure.

- When there is distance fluctuation between proximity sensor and the target, please adjust 2 at the farthest distance from this unit.
- Turning potentention VR toward clockwise, it will be max., or turning toward counter clockwise, it will be min. The number of adjustment should be 15 ± 3 revolution and if it is turned to the right or left excessively, it will not stop, but it idles without breakdown.
- () is for Normally closed type.

Procedure	Potentention VR	Description
1		Without a sensing object, turn the potentention VR to the right and stop at the proximity sensor is ON (OFF).
2		Put the object in right sensing position, turn the potentention VR to the left and stop at the proximity sensor is OFF (ON).
3		If the difference of the number of potentention VR rotation between the ON (OFF) point and the OFF (ON) point is more than 1.5 turns, the sensing operation will be stable.
4		If it is set in sensitivity adjustment position of potentention VR at center between 1 and 2, sensitivity setting will be completed.

Cut-out Dimensions

- Unit: mm, For the detailed drawings, follow the Autonics web site.



	Ø 18 mm	Ø 30 mm
Mounting hole (H)	Ø 18.5 ^{+0.5} ₀	Ø 30.5 ^{+0.5} ₀
TAP	M18×1	M30×1.5

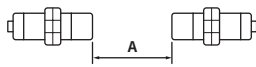
	Ø 18 mm	Ø 30 mm
Ø A	26.5	42
B	24	35

Mutual-interference & Influence by Surrounding Metals

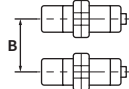
■ Mutual-interference

When plural proximity switches are mounted in a close row, malfunction of switches may be caused due to mutual interference. Therefore, be sure to provide a minimum distance between the two switches, as below table.

[Face to Face]

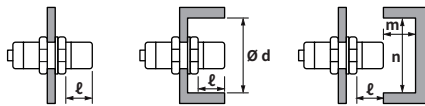


[Parallel]



■ Influence by surrounding metals

When switches are mounted on metallic panel, it must be prevented switches from being affected by any metallic object except target. Therefore, be sure to provide a minimum distance as below chart.



(unit: mm)

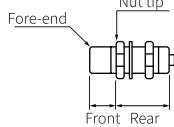
Item	Sensing side	Ø 18 mm	Ø 30 mm
A		48	90
B		54	90
l		20	10
Ø d		54	90
m		24	45
n		54	90

Tightening Torque

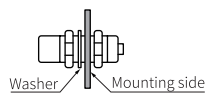
Use the provided washer to tighten the nuts.

The tightening torque of the nut varies with the distance from the fore-end. [Figure 1] If the nut tip is located at the front of the product, apply the front tightening torque. the allowable tightening torque table is for inserting the washer as [Figure 2].

[Figure 1]



[Figure 2]



Item	Sensing side	Ø 18 mm	Ø 30 mm
Strength		-	12 mm
Front size		-	12 mm
Front torque		0.39 N·m	49 N·m
Rear torque		0.39 N·m	78.4 N·m

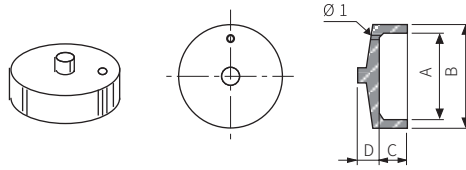
Sold Separately: M12 Connector Cable

- For detailed information, refer to the 'M8/M12 Connector Cable' manual.

Appearance	Power	Connector 1	Connector 2	Length	Feature	Model
	DC	M12 (Socket-Female) 4-pin	3-wire	2 m 5 m	PVC	CID3-2 CID3-5
	DC	M12 (Socket-Female) 4-pin	3-wire	2 m 5 m	Oil resistant PVC	CIDH3-2 CIDH3-5
	DC	M12 (Socket-Female) 4-pin, L type	3-wire	2 m 5 m	PVC	CLD3-2 CLD3-5
	DC	M12 (Socket-Female) 4-pin, L type	3-wire	2 m 5 m	Oil resistant PVC	CLDH3-2 CLDH3-5

Sold Separately: Protection Cover (P90-M□)

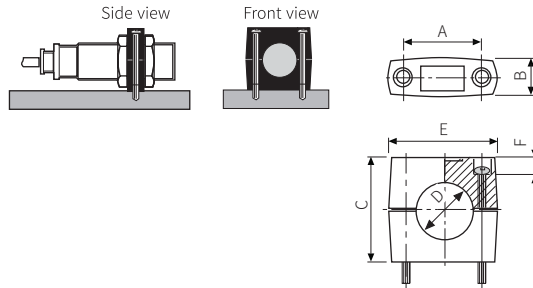
The welding tip (spatter) generated during arc welding has a property of sticking to plastics and metals. If several welding tips are attached to the front or body of the proximity switch, it may be difficult to replace the body or cause a malfunction. When using a general type proximity switch, use a silicone protective cover (sold separately). Only for flush (shield) type.



Item (mm)	Model	P90-M12	P90-M18	P90-M30
A		Ø 11	Ø 17	Ø 28.5
B		Ø 14	Ø 21	Ø 33
C		5.0	6.0	8.0
D		1.0	3.0	6.0
Applied sensing side size		M12	M18	M30

Sold Separately: Fixing Bracket (P90-R□)

If fixing holes are not made for cylindrical proximity switch, use a cylindrical fixing bracket as below. For Non-flush (non-shield) type, be sure effect by ambient material.



Item (mm)	Model	P90-R12	P90-R18	P90-R30
A		24 ± 0.2	32 ± 0.2	45 ± 0.2
B		≤ 11.5	≤ 16	≤ 16
C		20	30	50
D		Ø 12	Ø 18	Ø 30
E		≤ 34.4	≤ 47	≤ 60
F		6.0	10	10
Fixing bolt		M4 × 20	M5 × 30	M5 × 50
Applied sensing side size		M12	M18	M30