

# Wheel Type Incremental Rotary Encoders



## ENC Series PRODUCT MANUAL

**For your safety, read and follow the considerations written in the instruction manual, other manuals and Autonics website.**

The specifications, dimensions, etc. are subject to change without notice for product improvement. Some models may be discontinued without notice.

### Features

- Wheel type encoders ideal for measuring length or speed of continuously moving objects
- Output waveform of measured distance is proportional to International Weights and Measures (meters / inches)
- Power supply: 5 VDC  $\pm$  5%, 12 - 24 VDC  $\pm$  5%

### Safety Considerations

- Observe all 'Safety Considerations' for safe and proper operation to avoid hazards.
- ⚠ symbol indicates caution due to special circumstances in which hazards may occur.

**⚠ Warning** Failure to follow instructions may result in serious injury or death.

- 01. Fail-safe device must be installed when using the unit with machinery that may cause serious injury or substantial economic loss. (e.g. nuclear power control, medical equipment, ships, vehicles, railways, aircraft, combustion apparatus, safety equipment, crime / disaster prevention devices, etc.)**  
Failure to follow this instruction may result in personal injury, economic loss or fire.
- 02. Do not use the unit in the place where flammable / explosive / corrosive gas, high humidity, direct sunlight, radiant heat, vibration, impact or salinity may be present.**  
Failure to follow this instruction may result in explosion or fire.
- 03. Install on a device panel to use.**  
Failure to follow this instruction may result in fire.
- 04. Do not connect, repair, or inspect the unit while connected to a power source.**  
Failure to follow this instruction may result in fire.
- 05. Check 'Connections' before wiring.**  
Failure to follow this instruction may result in fire.
- 06. Do not disassemble or modify the unit.**  
Failure to follow this instruction may result in fire.

**⚠ Caution** Failure to follow instructions may result in injury or product damage.

- 01. Use the unit within the rated specifications.**  
Failure to follow this instruction may result in fire or product damage.
- 02. Do not short the load.**  
Failure to follow this instruction may result in fire.
- 03. Do not use the unit near the place where there is the equipment which generates strong magnetic force or high frequency noise and strong alkaline, strong acidic exists.**  
Failure to follow this instruction may result in product damage.

### Cautions during Use

- Follow instructions in 'Cautions during Use'.  
Otherwise, It may cause unexpected accidents.
- 5 VDC  $\pm$  5%, 12 - 24 VDC  $\pm$  5% power supply should be insulated and limited voltage / current or Class 2, SELV power supply device.
- For using the unit with the equipment which generates noise (switching regulator, inverter, servo motor, etc.), ground the shield wire to the F.G. terminal.
- Ground the shield wire to the F.G. terminal.
- When supplying power with SMPS, ground the F.G. terminal and connect the noise canceling capacitor between the 0 V and F.G. terminals.
- Wire as short as possible and keep away from high voltage lines or power lines, to prevent inductive noise.
- Check the wire type and response frequency when extending wire because of distortion of waveform or residual voltage increment etc. by line resistance or capacity between lines.
- This unit may be used in the following environments.
  - Indoors (in the environment condition rated in 'Specifications')
  - Altitude max. 2,000 m
  - Pollution degree 2
  - Installation category II

勝特力電材超市-龍山店 886-3-5773766  
 勝特力電材超市-光復店 886-3-5729570  
 勝特力電子(上海) 86-21-34970699  
 勝特力電子(深圳) 86-755-83298787  
<http://www.100y.com.tw>

## Cautions during Installation

- Install the unit correctly with the usage environment, location, and the designated specifications.
- Do not apply tensile strength over 30 N to the cable.

## Ordering Information

This is only for reference, the actual product does not support all combinations.  
For selecting the specified model, follow the Autonics website.

ENC	-	①	-	②	-	③	-	④	-	⑤
-----	---	---	---	---	---	---	---	---	---	---

### ① Output phase

1: A, B

### ② Min. measuring unit

1: 1 mm  
2: 1 cm  
3: 1 m  
4: 0.01 yd  
5: 0.1 yd  
6: 1 yd

### ③ Control output

T: Totem pole output  
N: NPN open collector output  
V: Voltage output

### ④ Power supply

5: 5 VDC  $\pm 5\%$   
24: 12 - 24 VDC  $\pm 5\%$

### ⑤ Connection

No mark: Axial cable type  
C: Axial cable connector type

## Product Components

- Product
- Instruction manual

## Sold Separately

- M17 connector cable: CID6S-□

## Connections

- Unused wires must be insulated.
- The metal case and shield cable of encoders must be grounded (F.G.).
- F.G. (Frame Ground) must be grounded separately.

Pin	Color	Function	Pin	Color	Function
1	Black	OUT A	4	Brown	+V
2	White	OUT B	5	Blue	GND
3	Orange	—	6	Shield	F.G.

• M17 6-pin layout



## Specifications

Model	ENC-1-□-T-□-□	ENC-1-□-N-□-□	ENC-1-□-V-□-□
Min. measuring unit [pulse]	1 mm / 1 cm / 1 m / 0.01 yd / 0.1 yd / 1 yd model		
Control output	Totem pole output	NPN open collector output	Voltage output
Output phase	A, B	A, B	A, B
Inflow current	≤ 30 mA	≤ 30 mA	-
Residual voltage	≤ 0.4 VDC $\approx$	≤ 0.4 VDC $\approx$	≤ 0.4 VDC $\approx$
Outflow current	≤ 10 mA	-	≤ 10 mA
Output voltage (5 VDC $\approx$ )	≥ (power supply - 2.0) VDC $\approx$	-	-
Output voltage (12 - 24 VDC $\approx$ )	≥ (power supply - 3.0) VDC $\approx$	-	-
Response speed <sup>(01)</sup>	≤ 1 μs		
Max. response freq.	180 kHz		
Max. allowable revolution <sup>(02)</sup>	5,000 rpm		
Starting torque	Dependent on the coefficient of friction		
Unit weight	≈ 494 g		
Approval	CE	CE	CE

(01) Based on cable length: 2 m, 1 sink: 20 mA

(02) Select resolution to satisfy Max. allowable revolution ≥ Max. response revolution

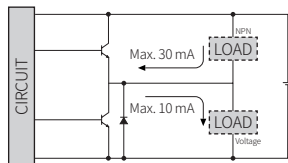
$$[\text{max. response revolution (rpm)}] = \frac{\text{max. response frequency}}{\text{resolution}} \times 60 \text{ sec}$$

Power supply	5 VDC $\pm 5\%$ (ripple P-P: ≤ 5%) / 12 - 24 VDC $\pm 5\%$ (ripple P-P: ≤ 5%) model
Current consumption	≤ 80 mA (no load)
Insulation resistance	≥ 100 MΩ (500 VDC $\approx$ megger)
Dielectric strength	Between the charging part and the case: 750 VAC ~ 50 / 60 Hz for 1 min.
Vibration	1 mm double amplitude at frequency 10 to 55 Hz in each X, Y, Z direction for 2 hours
Shock	≤ 75 G
Ambient temp.	-10 to 70 °C, storage: -25 to 85 °C (no freezing or condensation)
Ambient humi.	35 to 85%RH, storage: 35 to 90%RH (no freezing or condensation)
Protection rating	IP50 (IEC standard)
Connection	Axial cable type / Cable connector type model
Cable spec.	Ø 5 mm, 4-wire, shield cable cable type: 2 m, cable connector type: 250 mm
Wire spec.	AWG24 (0.08 mm, 40-core), insulator diameter: Ø 1 mm
Connector spec.	M17 6-pin plug type

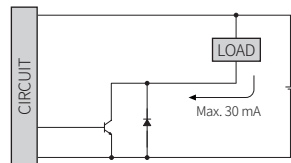
## Inner Circuit

- Output circuits are identical for all output phase.

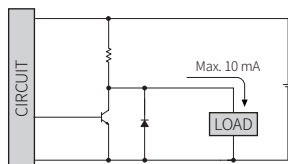
### Totem pole output



### NPN open collector output

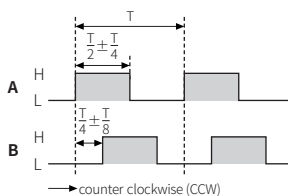


### Voltage output



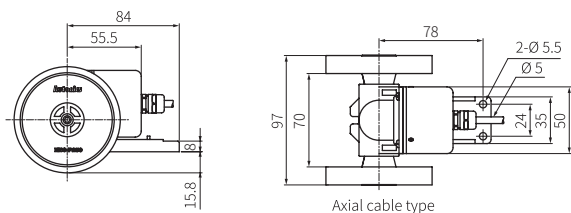
## Output Waveform

- The rotation direction is based on facing the shaft, and it is clockwise (CW) when rotating to the right.
- Phase difference between A and B:  $\frac{T}{4} \pm \frac{T}{8}$  (T = 1 cycle of A)



## Dimensions

- Unit: mm, For the detailed drawings, follow the Autonics website.
- Following items are based on cable type.  
Refer to 'Specifications' for detailed specifications of cable, wire and connector.



## ■ Min. measuring unit and wheel circumference

Min. measuring unit [/pulse]	Revolution wheel circumference	Pulse / 1 revolution	Gear ratio
1 mm	250 mm	250	1 : 1
1 cm		100	4 : 1
1 m		1	4 : 1
0.01 yd	228.6 mm (0.25 yd)	100	4 : 1
0.1 yd		10	4 : 1
1 yd		1	4 : 1

## Sold Separately: M17 Connector Cable

- For more information, refer to the M17 Connector Cable Product Manual.

Appearance	Power supply	Connector 1	Connector 2	Length	Model
	DC	M17 (Socket- Female) 6-pin	6-wire	2 m	CID6S-2
				5 m	CID6S-5
				10 m	CID6S-10
				15 m	CID6S-15