

EE-SB5M/SB5MC/SB5V/SB5VC/SB5V-E

Photomicrosensor with 80-mA
Switching Capacity that can be Built into
Equipment

- Built-in amplifier with NPN output
- Models available with 5- to 12-VDC and 5- to 15-VDC input
- CMOS- and TTL-compatible
- 19-mm sensing distance (EE-SB5V-E)
- Model with easy adjustment with an external sensitivity adjuster (EE-SB5V)
- Connectors available (EE-1001/1006)
- Convert to PNP output with EE-2002 conversion connector



Ordering Information

| Appearance | Sensing method | Sensing distance | Output configuration | Weight | Part number |
|------------|----------------|------------------|----------------------|---------------|-------------|
| | Diffuse | 5 mm | Light-ON | Approx. 3.0 g | EE-SB5M |
| | | | Dark-ON | | EE-SB5MC |
| | | | Light-ON | | EE-SB5V |
| | | | Dark-ON | | EE-SB5VC |
| | | 19 mm | Light-ON | Approx. 2.8 g | EE-SB5V-E |

ACCESSORIES

| Name | Part number |
|--------------------------|-------------|
| Solder connector | EE-1001 |
| Connector with 2 m cable | EE-1006 |

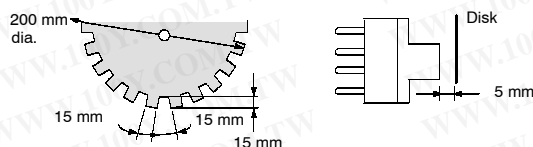
勝特力材料 886-3-5753170
 勝特力电子(上海) 86-21-34970699
 勝特力电子(深圳) 86-755-83298787
[Http://www.100y.com.tw](http://www.100y.com.tw)

Specifications

RATINGS

| Item | Diffuse | | | | |
|--------------------------------------------------|--------------------------------------------------------------------------------------------------------------------------------------------------------------------------------------------|----------|-------------------------------------------------|----------|-----|
| | EE-SB5M | EE-SB5MC | EE-SB5V(-E) | EE-SB5VC | |
| Supply voltage | 5 to 12 VDC ±10%, ripple (p-p): 10% max. | | 5 to 15 VDC ±10%, ripple (p-p): 10% max. | | |
| Current consumption | 36 mA max. | | 48 mA max. (DC current: I _F = 25 mA) | | |
| Maximum forward direct current (I _F) | — | | 30 mA max. | | |
| Forward voltage (V _F) | — | | 1.5 V max. (I _F = 30 mA) | | |
| Reverse voltage (V _R) | — | | 4 V max. | | |
| Standard reference object | White paper with reflection factor of 90% (standard sensing object: 15 x 15 mm) | | | | |
| Differential distance | 0.1 mm | | | | |
| Control output | At 5 to 24 VDC: 80-mA load current (I _C) with a residual voltage of 0.8 V max. When driving TTL: 40-mA load current (I _C) with a residual voltage of 0.4 V max. | | | | |
| Output configuration | Transistor on output stage without detecting object | OFF | ON | OFF | ON |
| | Transistor on output stage with detecting object | ON | OFF | ON | OFF |
| Response frequency (See note) | 50 Hz | | | | |
| Connecting method | EE-1001/1006 Connectors; soldering terminals/cordset | | | | |
| Light source | GaAs infrared LED with a peak wavelength of 940 nm | | | | |
| Receiver | Si photo-transistor with a sensing wavelength of 850 nm max. | | | | |

Note: The response frequency was measured by detecting the following disks rotating.



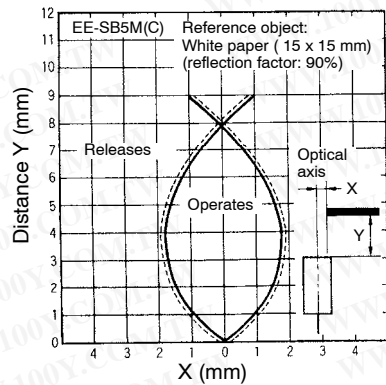
CHARACTERISTICS

| | | |
|---------------------------|------------------------------------------------------------------------------------------------------------------------------------------------------------------|--------------------------------|
| Ambient temperature | Operating | -25°C to 55°C (-13°F to 131°F) |
| | Storage | -30°C to 80°C (-22°F to 176°F) |
| Ambient humidity | Operating | 45% to 85% |
| | Storage | 35% to 95% |
| Vibration resistance | Destruction: 20 to 2,000 Hz (with a peak acceleration of 20G's), 1.5-mm double amplitude for 4 min each in X, Y, and Z directions | |
| Shock resistance | Destruction: 500 m/s ² for 3 times each in X, Y, and Z directions | |
| Soldering heat resistance | 260°±5°C (See Note.) when the portion between the tip of the terminals and the position 1.5 mm from the terminal base is dipped into the solder for 10±1 seconds | |

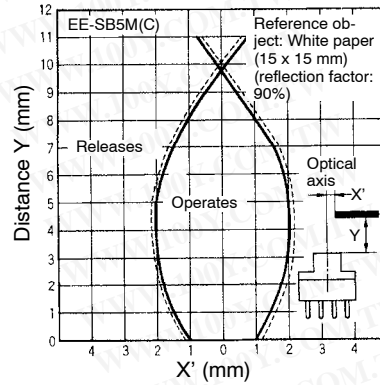
Note: This conforms to MIL-STD-750-2031-1.

Engineering Data

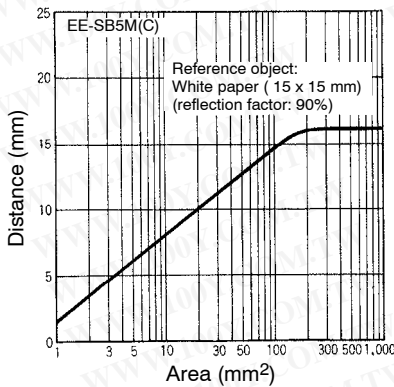
OPERATING RANGE (TYPICAL 1)



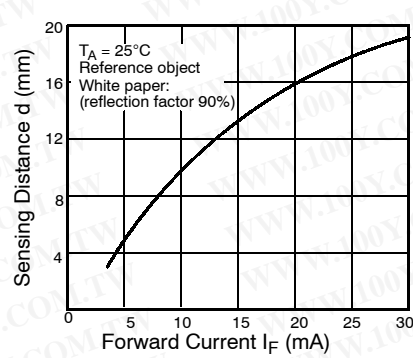
OPERATING RANGE (TYPICAL 2)



SENSING DISTANCE VS. OBJECT AREA (TYPICAL)



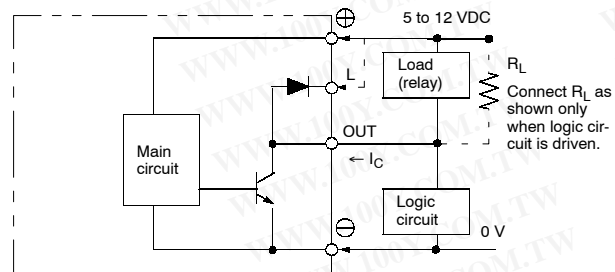
SENSING DISTANCE VS. I_F EE-SB5V-E (TYPICAL)



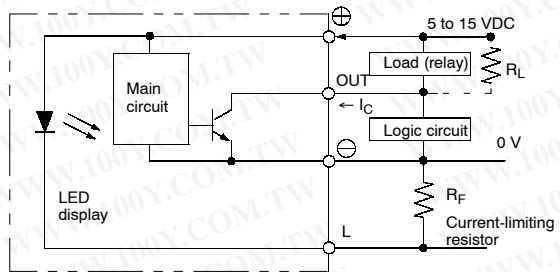
Operation

INTERNAL/EXTERNAL CIRCUIT DIAGRAMS

EE-SB5M(C) Light-ON/Dark-ON

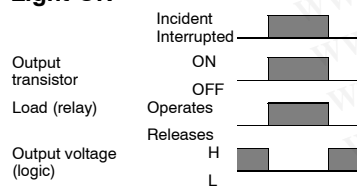


EE-SB5V(C), EE-SB5V-E Light-ON/Dark-ON

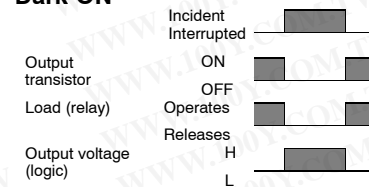


TIMING CHART

Light-ON



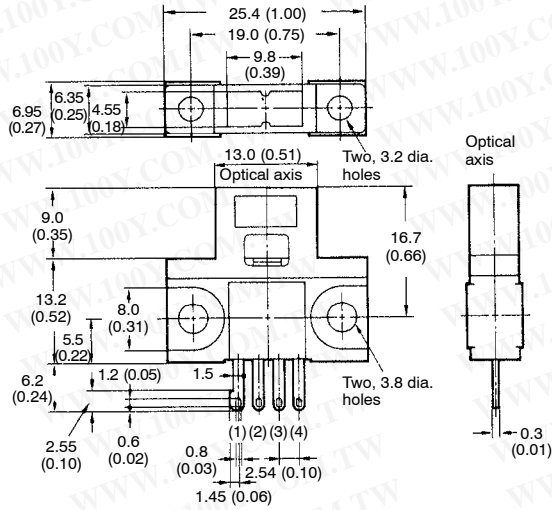
Dark-ON



Dimensions

Unit: mm (inch)

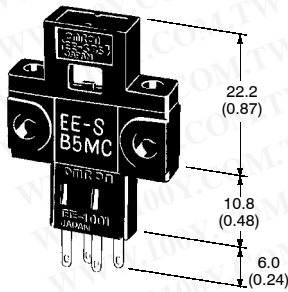
■ EE-SB5M(C), EE-SB5V(C), EE-SB5V-E



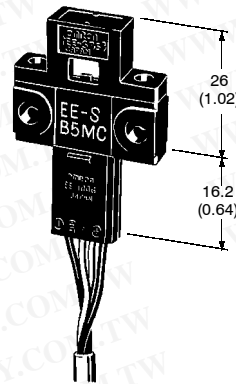
Terminal Arrangement

| | | |
|-----|-----|-----------------|
| (1) | ⊕ | V _{CC} |
| (2) | L | L |
| (3) | OUT | OUTPUT |
| (4) | ⊖ | GND (0 V) |

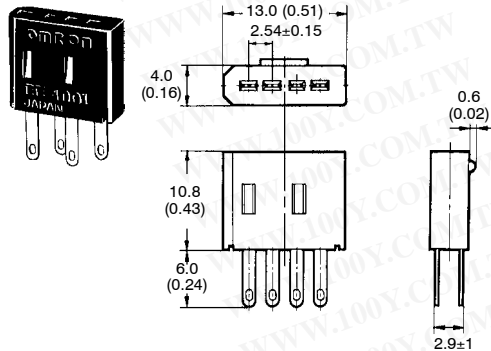
■ EE-SB5M(C)/SB5V(C)/SB5V-E + EE-1001



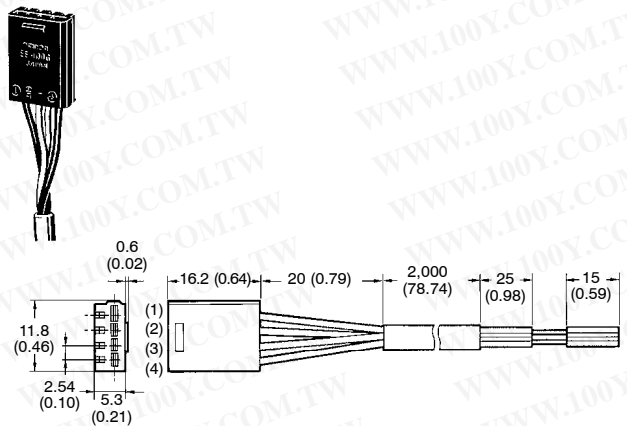
■ EE-SB5M(C)/SB5V(C)/SB5V + EE-1006



■ EE-1001 SOLDER CONNECTOR



■ EE-1006 CONNECTOR WITH CABLE

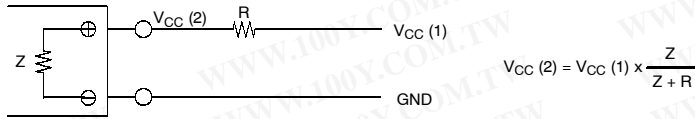


Terminal Arrangement

| | | | |
|-----|---------------|-----|-----------------|
| (1) | Red (Brown) | ⊕ | V _{CC} |
| (2) | Yellow (Pink) | L | L |
| (3) | White (Black) | OUT | OUTPUT |
| (4) | Black (Blue) | ⊖ | GND (0 V) |

IEC colors are shown in parentheses.

Note: Supply 5 to 12 V to the EE-SB5M(C). Wire as shown by the following diagram if the supply voltage exceeds 12 V.



Note: Z is the internal impedance between the positive and negative terminals.

| Model | V _{CC} (2) | Z (Ω) |
|------------|---------------------|-------|
| EE-SB5M(C) | 5 to 12 V | 360 |

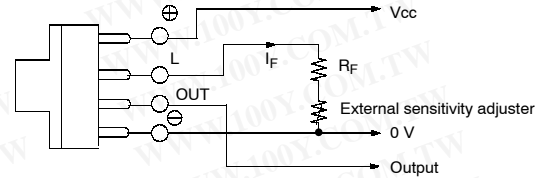
Precautions

Refer to the Technical Information Section for general precautions.

An external sensitivity adjuster can be connected to the EE-SB5V(C), EE-SB5V-E Photomicrosensor. When connecting the sensitivity adjuster, insert resistor R_F (current-limiting resistor), as shown by the diagram. The value of R_F is obtainable as follows:

$$R_F > (V_{CC} - 1.5 V) / 30 \text{ mA}$$

Note: The EE-SB5V(C) and EE-SB5V-E have no constant current circuit to protect the LED. For this reason, the LED will be damaged by excessive current applied to the positive terminal. To prevent potential LED damage, connect a current-limiting resistor, as shown previously.



勝特力材料 886-3-5753170
 勝特力电子(上海) 86-21-34970699
 勝特力电子(深圳) 86-755-83298787
[Http://www.100y.com.tw](http://www.100y.com.tw)

NOTE: DIMENSIONS SHOWN ARE IN MILLIMETERS. To convert millimeters to inches divide by 25.4.

OMRON®

OMRON ELECTRONICS LLC

One East Commerce Drive
 Schaumburg, IL 60173

1-800-55-OMRON

OMRON ON-LINE

Global - <http://www.omron.com>

USA - <http://www.omron.com/oei>

Canada - <http://www.omron.com/oci>

OMRON CANADA, INC.

885 Milner Avenue
 Toronto, Ontario M1B 5V8

416-286-6465