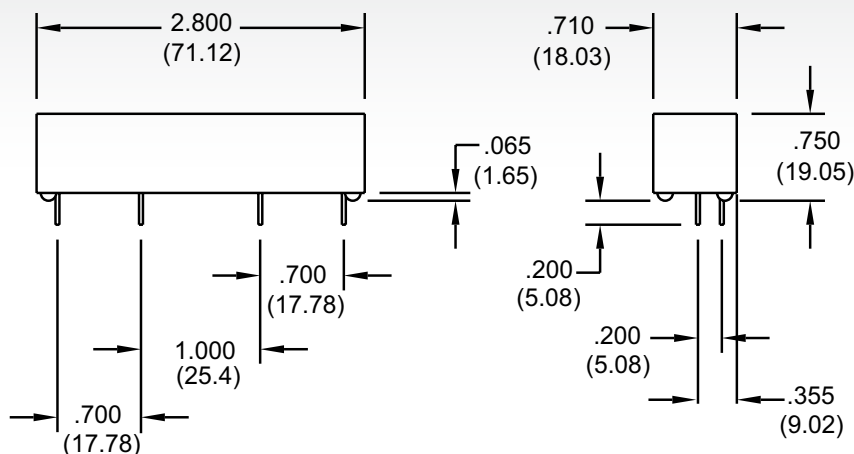


The 5500 Series High Voltage Reed Relays are ideally suited to the needs of Instrumentation, Industrial Process Controls and General Purpose requirements. The specification tables allow you to select the appropriate relay for your particular application. Applications include medical and hipot test instruments, and cable test equipment. If your requirements differ, please consult your local representative or Coto's Factory.

- ▶ High Dielectric Strength - 10,000 Volts isolation across contacts
- ▶ High Contact Rating - 200 Watts
- ▶ Hermetically sealed Tungsten contacts for long life
- ▶ Magnetic Shield standard
- ▶ Custom lead terminations and packages available
- ▶ RoHS compliant

in Inches (Millimeters)



.033 DIA.  
(0.84)

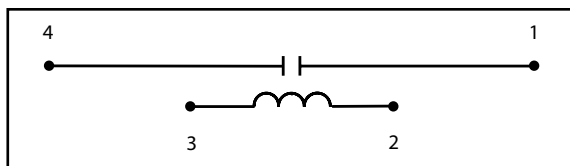
### Bottom View

Part Number	XXXX-XX-1	
Model Number		Coil Voltage
5501 5502		05=5 volts
5503 5504		12=12 volts
		24=24 volts

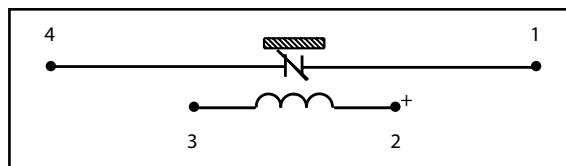
**tel: (401) 943.2686 | fax: (401) 942.0920**

MODEL NUMBER			5501			5502 <sup>2</sup>			5503			5504 <sup>2</sup>		
Parameters	Test Conditions	Units	1 Form A High Voltage Isolation			1 Form B High Voltage Isolation			1 Form A Load Switching			1 Form B Load Switching		
COIL SPECS.														
Nom. Coil Voltage		VDC	5	12	24	5	12	24	5	12	24	5	12	24
Max. Coil Voltage		VDC	6.5	15	30	6.5	15	30	6.5	15	30	6.5	15	30
Coil Resistance	+/- 10%, 25° C	Ω	40	175	575	40	175	575	40	175	575	40	175	575
Operate Voltage	Must Operate by	VDC - Max.	3.75	9.0	18.0	3.75	9.0	18.0	3.75	9.0	18.0	3.75	9.0	18.0
Release Voltage	Must Release by	VDC - Min.	0.5	1.0	2.0	0.5	1.0	2.0	0.5	1.0	2.0	0.5	1.0	2.0
CONTACT RATINGS														
Switching Voltage	Max DC/Peak AC Resist.	Volts	7500			7500			3500			3500		
Switching Current	Max DC/Peak AC Resist.	Amps	3.0			3.0			3.0			3.0		
Carry Current	Max DC/Peak AC Resist.	Amps	5.0			5.0			5.0			5.0		
Contact Rating	Max DC/Peak AC Resist.	Watts	50			50			200			200		
Life Expectancy-Typical <sup>1</sup>	Signal Level 1.0V, 10mA	x 10 <sup>6</sup> Ops.	100			100			100			100		
Static Contact Resistance (max. init.)	50mV, 10mA	Ω	0.080			0.080			0.200			0.200		
RELAY SPECIFICATIONS														
Insulation Resistance (minimum)	Between all Isolated Pins at 100V, 25°C, 40% RH	Ω	10 <sup>10</sup>			10 <sup>10</sup>			10 <sup>10</sup>			10 <sup>10</sup>		
Capacitance - Typical Across Open Contacts		pF	1.5			1.5			1.5			1.5		
Dielectric Strength (minimum)	Between Contacts Contacts to Coil	VDC/peak AC VDC/peak AC	10,000 10,000			10,000 10,000			7,500 10,000			7,500 10,000		
Operate Time - including bounce	At Nominal Coil Voltage, 30 Hz Square Wave	msec.	3.0			3.0			3.0			3.0		
Release Time - Typical		msec.	3.0			3.0			3.0			3.0		

Top View: Grid = .1"x.1" (2.54mm x 2.54mm)



**5501, 5503**



**5502, 5504**

勝特力材料 886-3-5753170  
 勝特力电子(上海) 86-21-34970699  
 勝特力电子(深圳) 86-755-83298787  
[Http://www.100y.com.tw](http://www.100y.com.tw)

#### Notes:

<sup>1</sup> Consult factory for life expectancy at other switching loads.

<sup>2</sup> This relay contains a bias magnet. Correct coil polarity must be observed. Models 5502 and 5504 susceptible to magnetic interaction due to bias internal magnet.

#### Environmental Ratings:

*Storage Temp:* -35°C to +100°C; *Operating Temp:* -20°C to +85°C; *Solder Temp:* 270°C max; 10 sec. max

All electrical parameters measured at 25°C unless otherwise specified.

*Vibration:* 20 G's to 2000 Hz; *Shock:* 50 G's

07082013