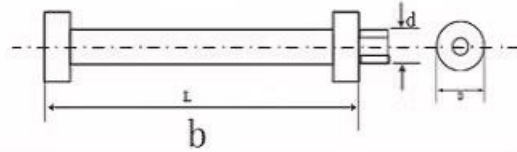
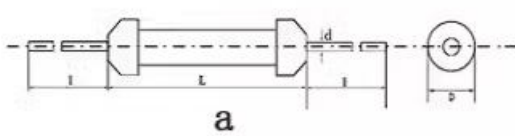


产品规格



型号	额定功率 (W)	结构	外形尺寸 (mm)				阻值范围	温度系数 ($\times 10^{-6}/^{\circ}\text{C}$)	允许偏差 (%)	耐压 (KV)								
			D	L	d	l												
RI80-1	1W	a(引线)	5	21	1	30	1-1000G	± 400		5KV								
RI80-2	2W		7	25			10KV											
RI80-3	3W		8	30			15KV											
RI80-5	5W		9	50			15KV											
RI80-8	8W		10	70			15KV											
RI80-10	10W	a(引线)	10	100	1	30	1-1000G		± 400	$\pm 2\%$ (G) $\pm 5\%$ (J) $\pm 1\%$ (F) $\pm 10\%$ (K)	50KV							
		b(螺柱)	11	78	M4	6	1-1000G											
RI80-15	15W	a(引线)	10	150	1	30	1-1000G					± 400	$\pm 2\%$ (G) $\pm 5\%$ (J) $\pm 1\%$ (F) $\pm 10\%$ (K)	50KV				
		b(螺柱)	10	150	M4	6	1-1000G											
RI80-20	20W	b(螺柱)	18	115	M5	10	1-1000G								± 400	$\pm 2\%$ (G) $\pm 5\%$ (J) $\pm 1\%$ (F) $\pm 10\%$ (K)	50KV	
RI80-30	30W		20	120	M5		1-1000G											
RI80-50	50W		22	130	M6		1-1000G											
RI80-100	100W		27	170	M8		1-1000G											65KV
RI80-200	200W		27	260	M10		1-1000G											80KV
RI80-300	300W		37	310	M10		1-1000G											90KV
RI80-500	500W		50	300	M10		1-1000G	100KV										
RI80-1000	1000W		50	510	M10		1-1000G	120KV										