

勝特力材料 886-3-5753170  
 勝特力电子(上海) 86-21-34970699  
 勝特力电子(深圳) 86-755-83298787  
[Http://www.100y.com.tw](http://www.100y.com.tw)

## 5 Amp. Silicon Bridge Rectifiers in Plastic Case

Dimensions in mm.	Plastic Case	
		<b>Voltage</b> 100 to 1.000 V.
		<b>Current</b> 5.0 A.
		<ul style="list-style-type: none"> <li>• In process of evaluation UL 1449</li> <li>• Low Cost</li> <li>• Case: Epoxy encapsulation</li> <li>• Terminals: Radial in-line</li> <li>• Ideal for PC.B.</li> </ul> Lead and polarity identifications High surge current capability

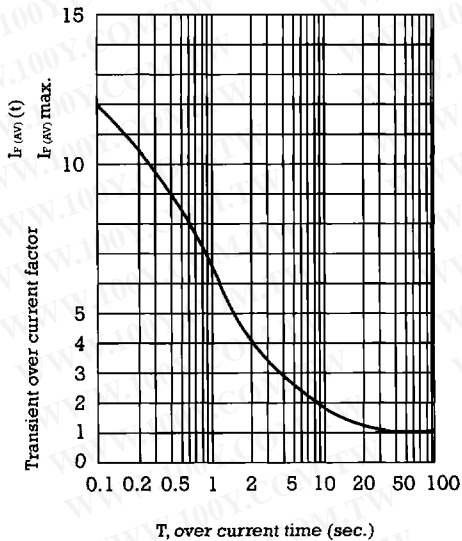
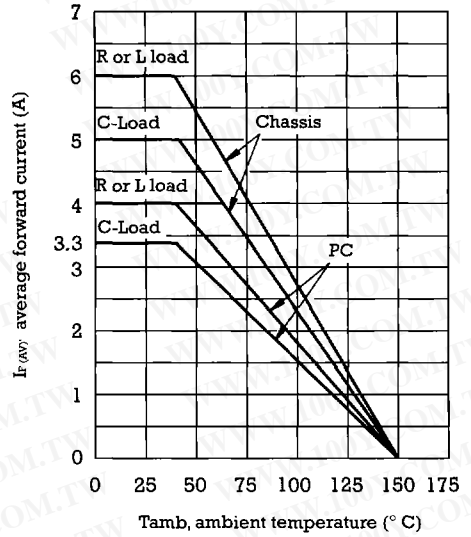
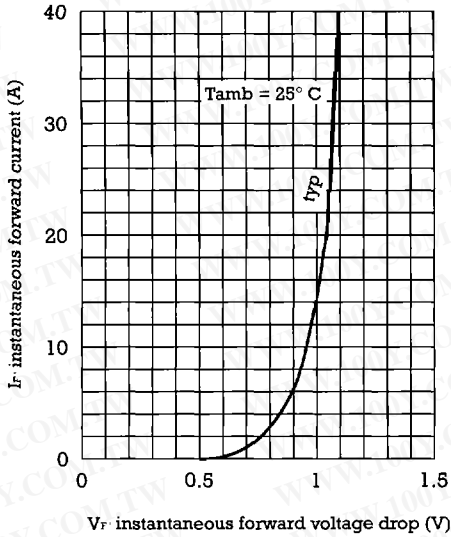
### Maximum Ratings, according to IEC publication No. 134

		B40	B80	B125	B250	B380	B500
		C5000/3300	C5000/3300	C5000/3300	C8000/3300	C5000/3300	C5000/3300
$V_{FWM}$	Max. peak working voltage (V)	100	200	300	600	900	1000
$V_{RMS}$	Recommended input voltage (V)	40	80	125	250	380	500
$I_{F(AV)}$	Forward current at $T_{amb} = 45^\circ C$			4.0 A 3.3 A			
	- PC mounted R load C load						
	- Chassis mounted R load C load			6.0 A 5.0 A			
$I_{FRM}$	Recurrent peak forward current			30 A			
$I_{FSM}$	10 ms. peak forward surge current			250 A			
$I^2t$	$I^2t$ value for fusing (t = 10 ms)			300 A <sup>2</sup> S			
$T_j$	Max. operating temperature			+ 150 °C			
$T_{stg}$	Storage temperature range			- 40 to + 150 °C			

### Electrical Characteristics at $T_{amb} = 25^\circ C$

$V_F$	Max. forward voltage drop per element at $I_F = 5 A$	1.1 V
$I_R$	Max. reverse current per element at $V_{RRM}$	20 $\mu A$

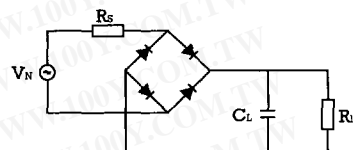
### Characteristic Curves



#### OPERATION WITH CAPACITIVE LOAD

Limit values of  $R_s$  and  $C_L$  for adequate protection against switching transients.

Recommended input voltage $V_{RMS}$	Min. $R_s$ Tol $\pm 10\%$ Ohms	Max. $C_L$ + 50 % - 20 % $\mu F$
40	0,5	10.000
80	1,0	5,000
125	1,5	2.500
250	3,0	1.200
380	5,0	800
500	6,0	600



勝特力材料 886-3-5753170  
 勝特力电子(上海) 86-21-34970699  
 勝特力电子(深圳) 86-755-83298787  
[Http://www.100y.com.tw](http://www.100y.com.tw)