

# THYRISTOR MODULE

PDT1508 PDH1508

150A / 800V

勝特力電材超市-龍山店 886-3-5773766  
 勝特力電材超市-光復店 886-3-5729570  
 勝特力電子(上海) 86-21-34970699  
 勝特力電子(深圳) 86-755-83298787  
<http://www.100y.com.tw>

## FEATURES

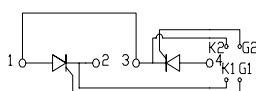
- \* Isolated Base
- \* Dual Thyristors or Thyristor and Diode Cascaded Circuit
- \* High Surge Capability
- \* UL Recognized, File No. E187184

## TYPICAL APPLICATIONS

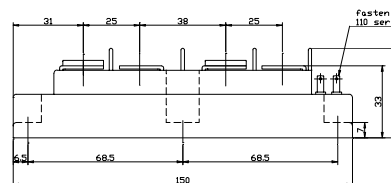
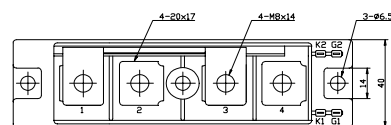
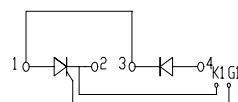
- \* Rectified For General Use

## OUTLINE DRAWING

PDT



PDH



## Maximum Ratings

Approx Net Weight:480g

Parameter	Symbol	Grade	Unit
		PDT/PDH1508	
Repetitive Peak Off-State Voltage	V <sub>DRM</sub>	800	V
Non Repetitive Peak Off-State Voltage	V <sub>DSM</sub>	900	
Repetitive Peak Reverse Voltage	V <sub>RRM</sub>	800	V
Non Repetitive Peak Reverse Voltage	V <sub>RSM</sub>	900	

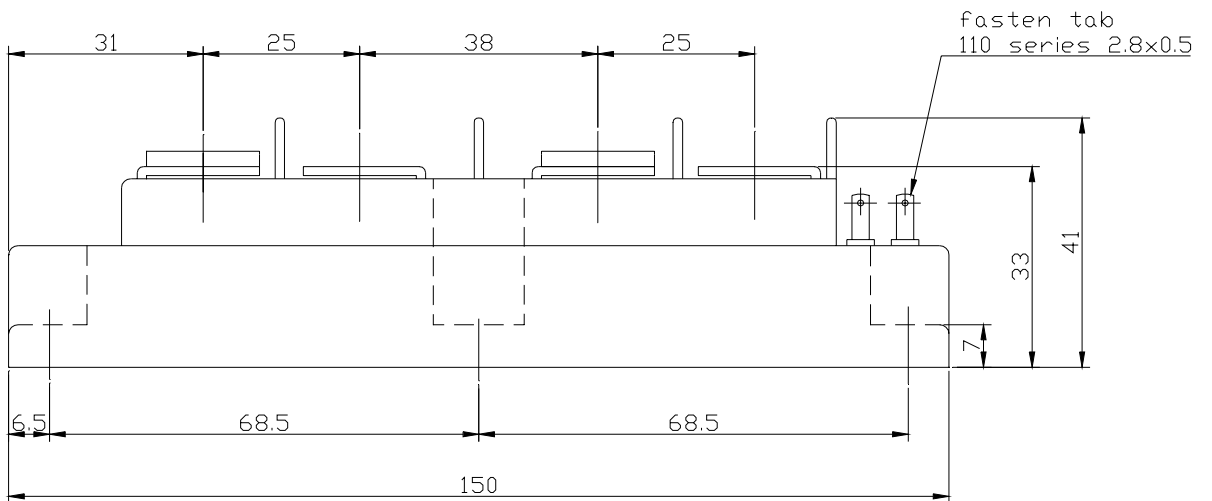
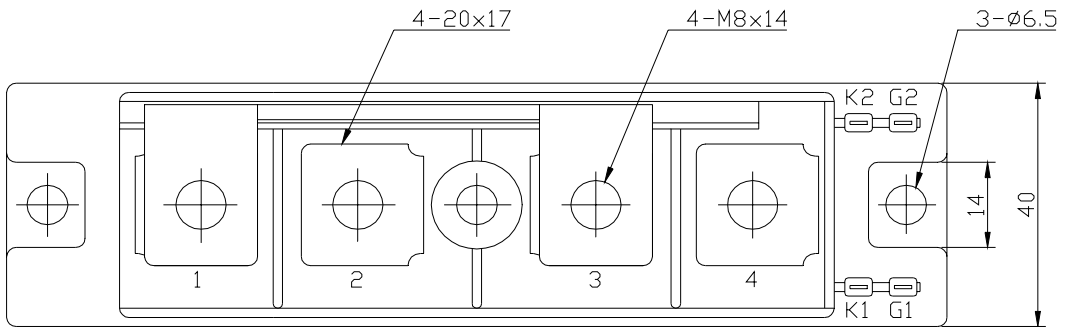
Parameter		Conditions	Max Rated Value	Unit	
Average Rectified Output Current	I <sub>O(AV)</sub>	50Hz Half Sine Wave condition T <sub>c</sub> =78°C	150	A	
RMS On-State Current	I <sub>T(RMS)</sub>		235	A	
Surge On-State Current	I <sub>TSM</sub>	50 Hz Half Sine Wave, 1Pulse Non-Repetitive	3200	A	
I Squared t	I <sup>2</sup> t	2msec to 10msec	51200	A <sup>2</sup> s	
Critical Rate of Turned-On Current	di/dt	V <sub>D</sub> =2/3V <sub>DRM</sub> , I <sub>TM</sub> =2·I <sub>O</sub> , T <sub>j</sub> =125°C I <sub>G</sub> =300mA, di <sub>c</sub> /dt=0.2A/μs	100	A/μs	
Peak Gate Power	P <sub>GM</sub>		5	W	
Average Gate Power	P <sub>G(AV)</sub>		1	W	
Peak Gate Current	I <sub>GM</sub>		2	A	
Peak Gate Voltage	V <sub>GM</sub>		10	V	
Peak Gate Reverse Voltage	V <sub>RGM</sub>		5	V	
Operating JunctionTemperature Range	T <sub>jw</sub>		-40 to +125	°C	
Storage Temperature Range	T <sub>stg</sub>		-40 to +125	°C	
Isoration Voltage	Viso	Base Plate to Terminals, AC1min	2000	V	
Mounting torque	Case mounting	Ftor	M6 Screw	2.5 to 3.5	N.m
	Terminals		M8 Screw	9.0 to 10.0	

**Electrical • Thermal Characteristics**

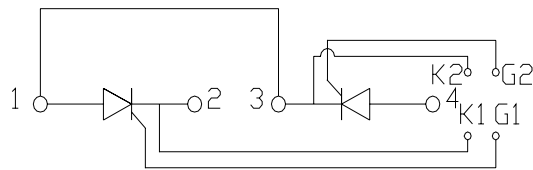
Characteristics	Symbol	Test Conditions	Maximum Value.			Unit
			Min.	Typ.	Max.	
Peak Off-State Current	$I_{DM}$	$V_{DM} = V_{DRM}, T_j = 125^\circ\text{C}$			15	mA
Peak Reverse Current	$I_{RM}$	$V_{RM} = V_{RRM}, T_j = 125^\circ\text{C}$			15	mA
Peak Forward Voltage	$V_{TM}$	$I_{TM} = 450\text{A}, T_j = 25^\circ\text{C}$			1.28	V
Gate Current to Trigger	$I_{GT}$	$V_D = 6\text{V}, I_T = 1\text{A}$	$T_j = -40^\circ\text{C}$		300	mA
			$T_j = 25^\circ\text{C}$		150	
			$T_j = 125^\circ\text{C}$		80	
Gate Voltage to Trigger	$V_{GT}$	$V_D = 6\text{V}, I_T = 1\text{A}$	$T_j = -40^\circ\text{C}$		5	V
			$T_j = 25^\circ\text{C}$		3	
			$T_j = 125^\circ\text{C}$		2	
Gate Non-Trigger Voltage	$V_{GD}$	$V_D = 2/3V_{DRM}, T_j = 125^\circ\text{C}$	0.25			V
Critical Rate of Rise of Off-State Voltage	dv/dt	$V_D = 2/3V_{DRM}, T_j = 125^\circ\text{C}$	500			V/ $\mu\text{s}$
Turn-Off Time	tq	$I_{TM} = I_O, V_D = 2/3V_{DRM}$ $dv/dt = 20\text{V}/\mu\text{s}, V_R = 100\text{V}$ $-di/dt = 20\text{A}/\mu\text{s}, T_j = 125^\circ\text{C}$		100		$\mu\text{s}$
Turn-On Time	tgt	$V_D = 2/3V_{DRM}, T_j = 125^\circ\text{C}$ $I_G = 300\text{mA}, di_G/dt = 0.2\text{A}/\mu\text{s}$		6		$\mu\text{s}$
Delay Time	td			2		$\mu\text{s}$
Rise Time	tr			4		$\mu\text{s}$
Latching Current	$I_L$	$T_j = 25^\circ\text{C}$		100		mA
Holding Current	$I_H$	$T_j = 25^\circ\text{C}$		60		
Thermal Resistance	Rth(j-c)	Junction to Case			0.25	$^\circ\text{C}/\text{W}$
	Rth(c-f)	Base Plate to Heat Sink with Thermal Compound			0.1	

Value Per 1Arm

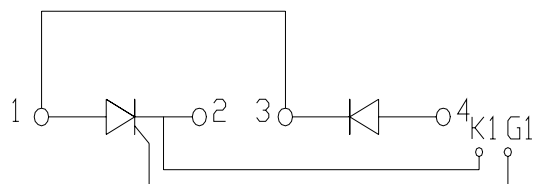
PDT/PDH1508 OUTLINE DRAWING (Dimensions in mm)



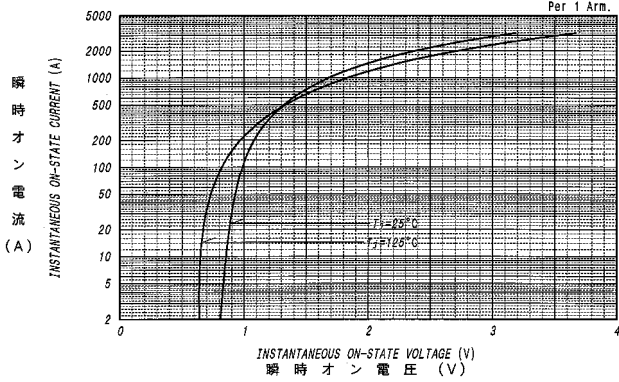
PDT



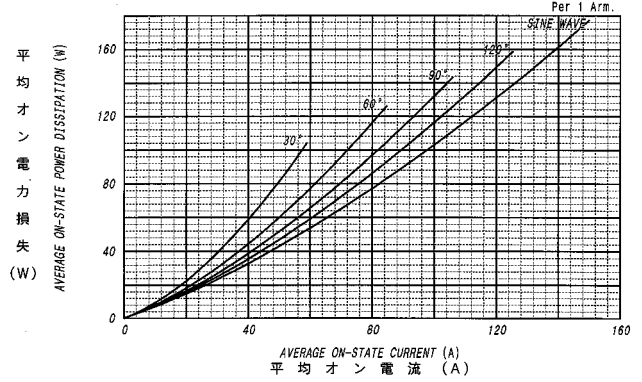
PDH



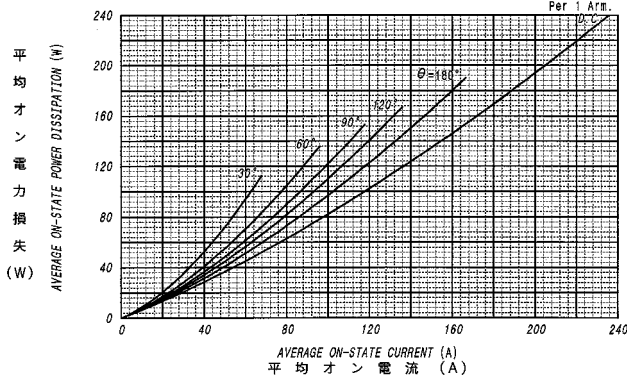
オン電圧特性  
ON-STATE CURRENT VS. VOLTAGE



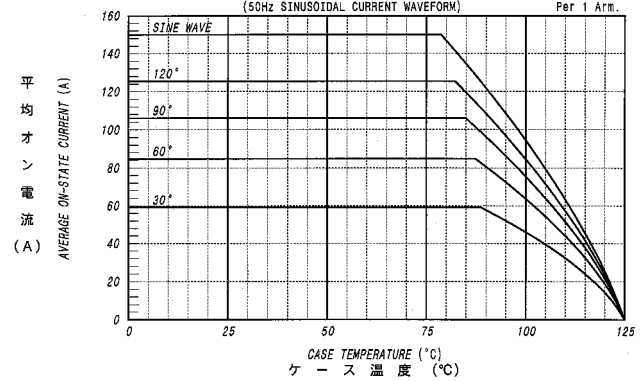
平均オン電力損失特性  
AVERAGE ON-STATE POWER DISSIPATION  
for SINUSOIDAL CURRENT WAVEFORM



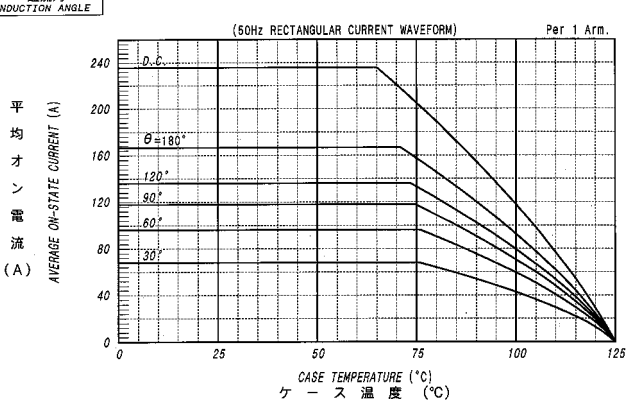
平均オン電力損失特性  
AVERAGE ON-STATE POWER DISSIPATION  
for RECTANGULAR CURRENT WAVEFORM



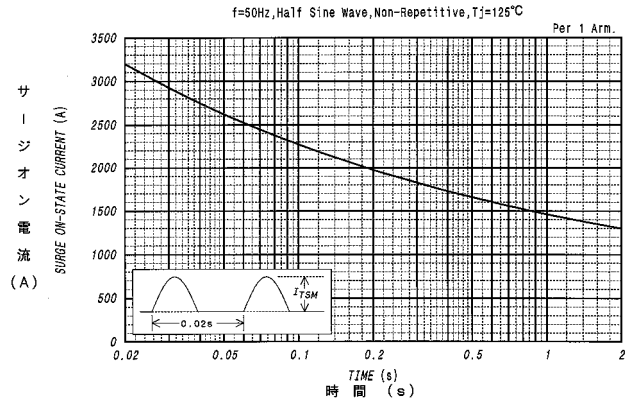
平均オン電流 - ケース温度定格  
AVERAGE ON-STATE CURRENT VS. CASE TEMPERATURE



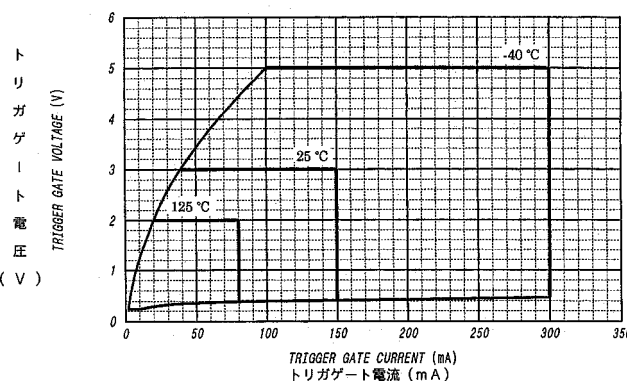
平均オン電流 - ケース温度定格  
AVERAGE ON-STATE CURRENT VS. CASE TEMPERATURE



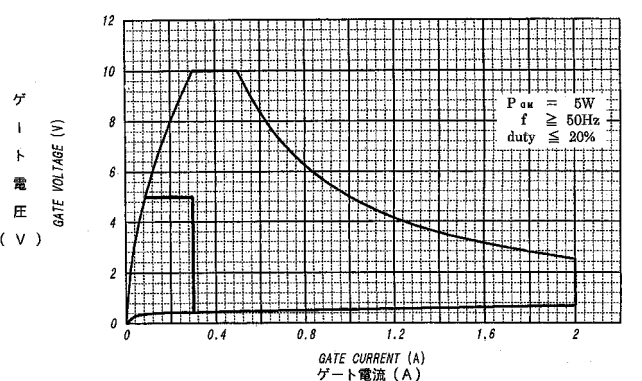
サージオン電流定格  
SURGE CURRENT RATINGS



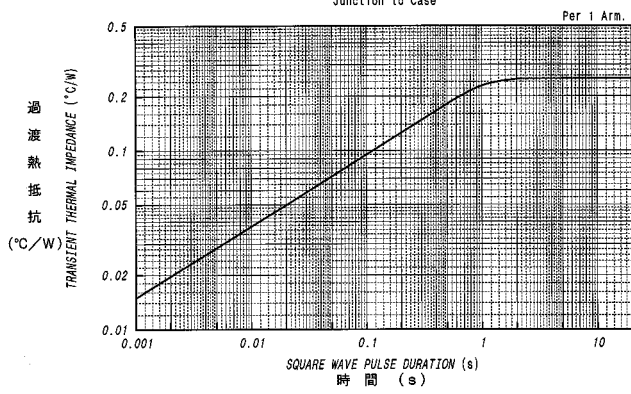
ゲート特性  
GATE CHARACTERISTICS



ゲート定格  
GATE RATINGS



過渡熱抵抗特性  
MAXIMUM TRANSIENT THERMAL IMPEDANCE  
Junction to Case



勝特力電材超市-龍山店 886-3-5773766  
勝特力電材超市-光復店 886-3-5729570  
勝特力電子(上海) 86-21-34970699  
勝特力電子(深圳) 86-755-83298787  
<http://www.100y.com.tw>