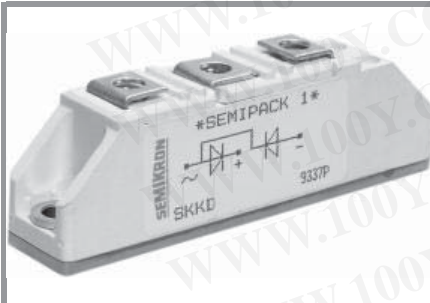


SKKD 40F, SKMD 40F



SEMIPACK[®] 1

Fast Diode Modules

SKKD 40F

SKMD 40F

Features

- Heat transfer through ceramic isolated metal baseplate
- Hard soldered joints for high reliability
- SKKD half bridge connection; SKMD centre tap connection, common cathode
- UL recognized, file no. E 63 532

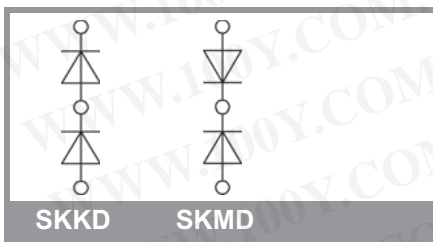
Typical Applications

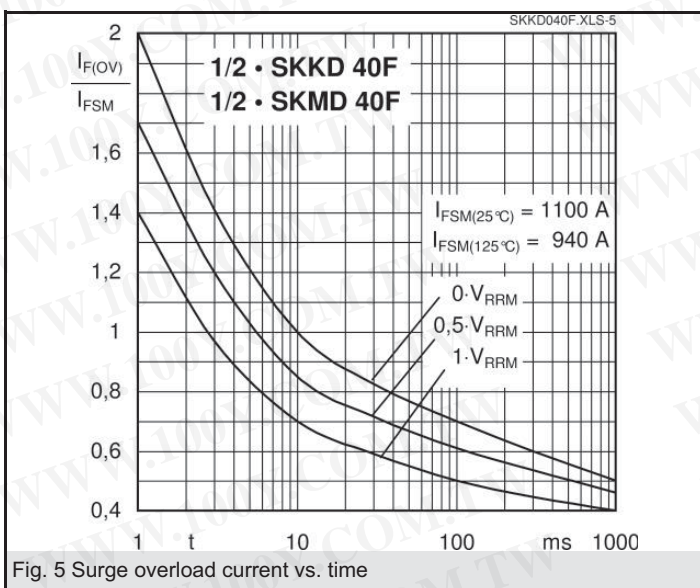
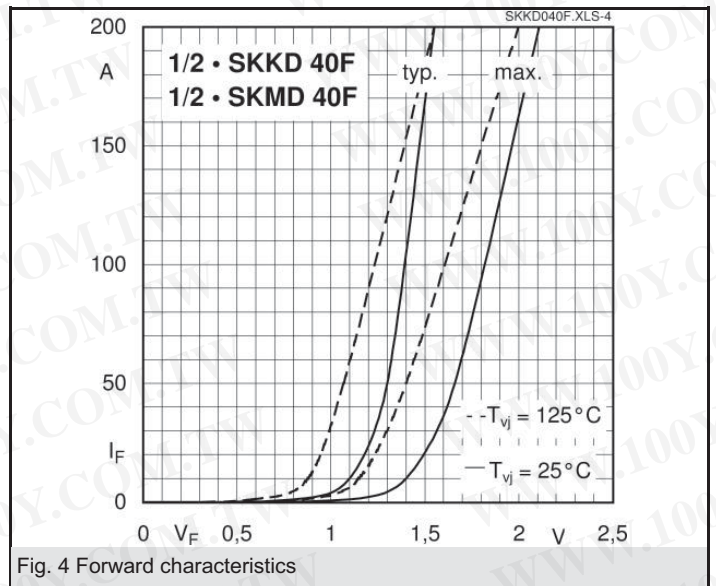
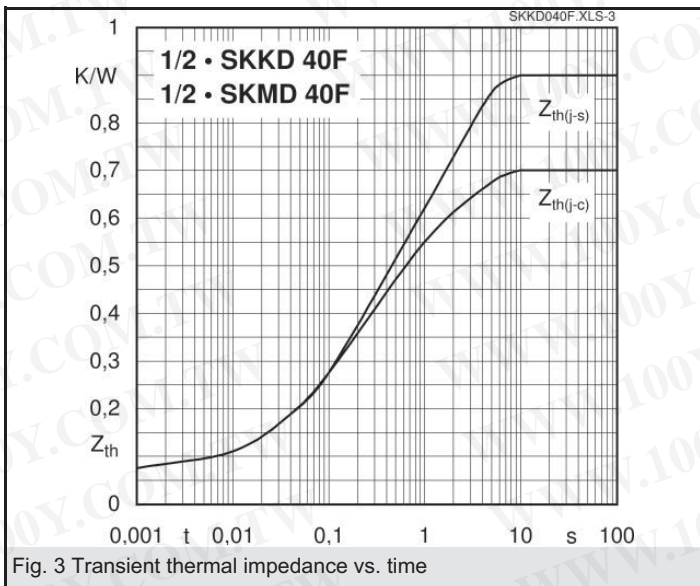
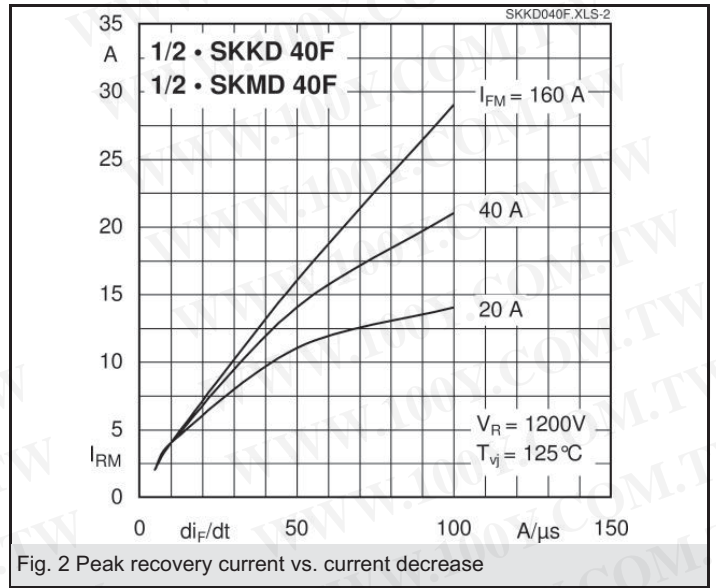
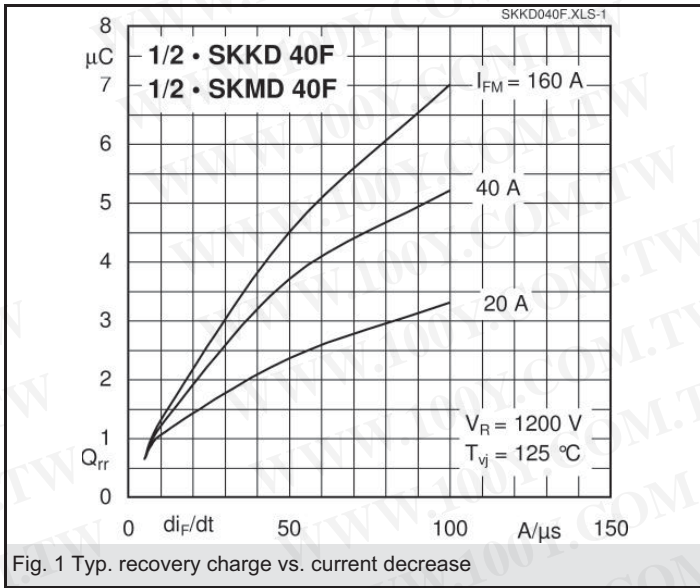
- Self-commutated inverters
- DC choppers
- AC motor speed control
- Inductive heating
- Uninterruptible power supplies
- Electronic welders
- General power switching application

| V_{RSM} V | V_{RRM} V | $I_{FRMS} = 110$ A (maximum value for continuous operation) $I_{FAV} = 40$ A (sin. 180°; 50Hz; $T_c = 80$ °C) | |
|----------------|----------------|--|------------|
| 400 | 400 | SKKD 40F04 | SKMD 40F04 |
| 600 | 600 | SKKD 40F06 | SKMD 40F06 |
| 800 | 800 | SKKD 40F08 | SKMD 40F08 |
| 1000 | 1000 | SKKD 40F10 | SKMD 40F10 |

| Symbol | Conditions | Values | Units |
|---------------|---------------------------------------|----------------|------------------|
| I_{FAV} | sin. 180; $T_c = 85$ (100) °C | 37 (25) | A |
| I_{FSM} | $T_{vj} = 25$ °C; 10 ms | 1100 | A |
| | $T_{vj} = 125$ °C; 10 ms | 940 | A |
| i^2t | $T_{vj} = 25$ °C; 8,3 ... 10 ms | 6000 | A ² s |
| | $T_{vj} = 125$ °C; 8,3 ... 10 ms | 4400 | A ² s |
| V_F | $T_{vj} = 25$ °C; $I_F = 150$ A | max. 2 | V |
| $V_{(TO)}$ | $T_{vj} = 125$ °C | max. 1,2 | V |
| r_T | $T_{vj} = 125$ °C | max. 4 | mΩ |
| I_{RD} | $T_{vj} = 25$ °C; $V_{RD} = V_{RRM}$ | max. 0,5 | mA |
| I_{RD} | $T_{vj} = 125$ °C; $V_{RD} = V_{RRM}$ | max. 50 | mA |
| Q_{rr} | $T_{vj} = 125$ °C; $I_F = 100$ A, | 3 | μC |
| I_{RM} | $-di/dt = 30$ A/μs, $V_R = 30$ V | 10 | A |
| t_{rr} | | 600 | ns |
| E_{rr} | | 0,05 | mJ |
| $R_{th(j-c)}$ | per diode / per module | 0,7 / 0,35 | K/W |
| $R_{th(c-s)}$ | per diode / per module | 0,2 / 0,1 | K/W |
| T_{vj} | | - 40 ... + 125 | °C |
| T_{stg} | | - 40 ... + 125 | °C |
| V_{isol} | a. c. 50 Hz; r.m.s.; 1 s / 1 min. | 3600 / 3000 | V~ |
| M_s | to heatsink | 5 ± 15 % | Nm |
| M_t | to terminals | 3 ± 15 % | Nm |
| a | | 5 * 9,81 | m/s ² |
| m | approx. | 120 | g |
| Case | SKKD | A 10 | |
| | SKMD | A 11 | |

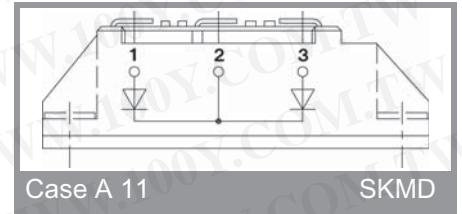
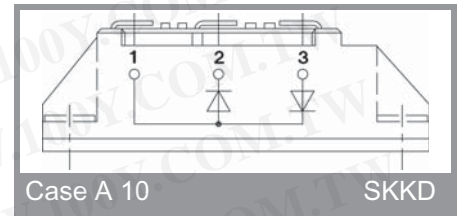
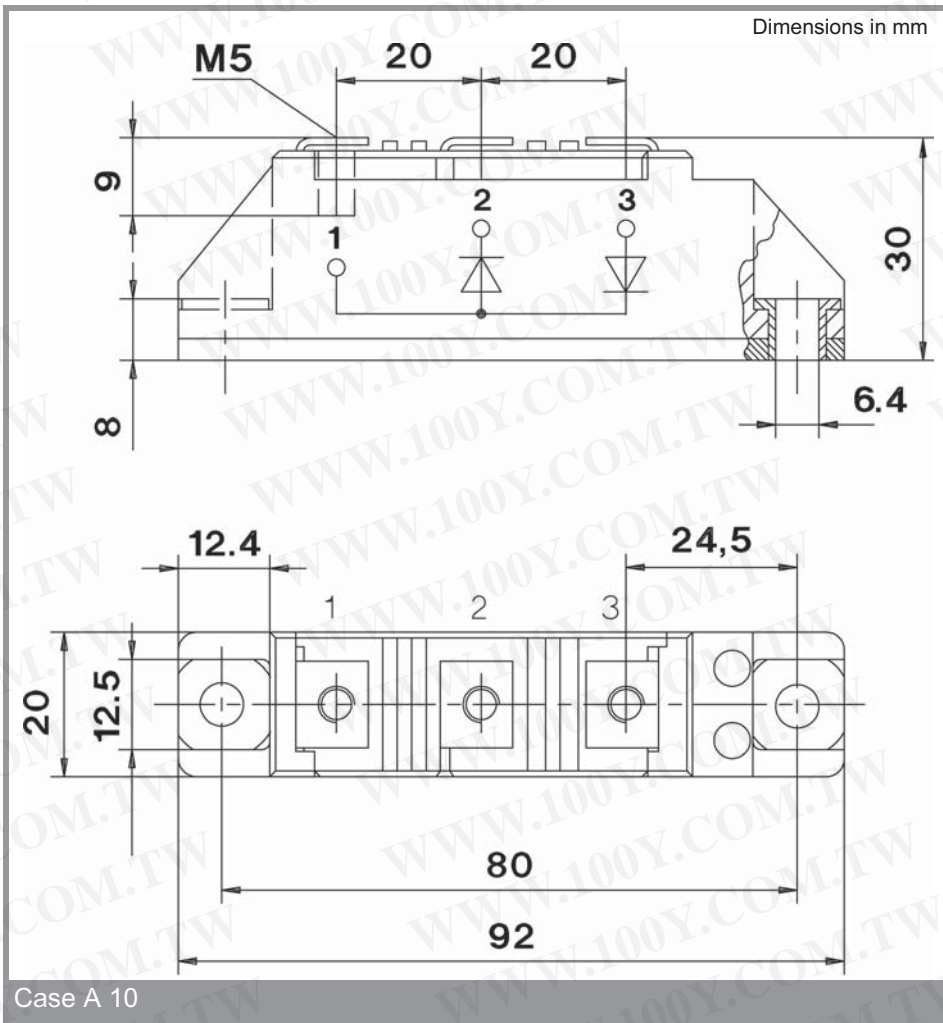
勝特力材料 886-3-5753170
 勝特力电子(上海) 86-21-34970699
 勝特力电子(深圳) 86-755-83298787
[Http://www.100y.com.tw](http://www.100y.com.tw)





勝特力材料 886-3-5753170
 勝特力电子(上海) 86-21-34970699
 勝特力电子(深圳) 86-755-83298787
[Http://www.100y.com.tw](http://www.100y.com.tw)

SKKD 40F, SKMD 40F



勝特力材料 886-3-5753170
 勝特力电子(上海) 86-21-34970699
 勝特力电子(深圳) 86-755-83298787
[Http://www.100y.com.tw](http://www.100y.com.tw)

This technical information specifies semiconductor devices but promises no characteristics. No warranty or guarantee expressed or implied is made regarding delivery, performance or suitability.