

SHINDENGEN

Super Fast Recovery Rectifiers

Dual

S20LC40

400V 20A

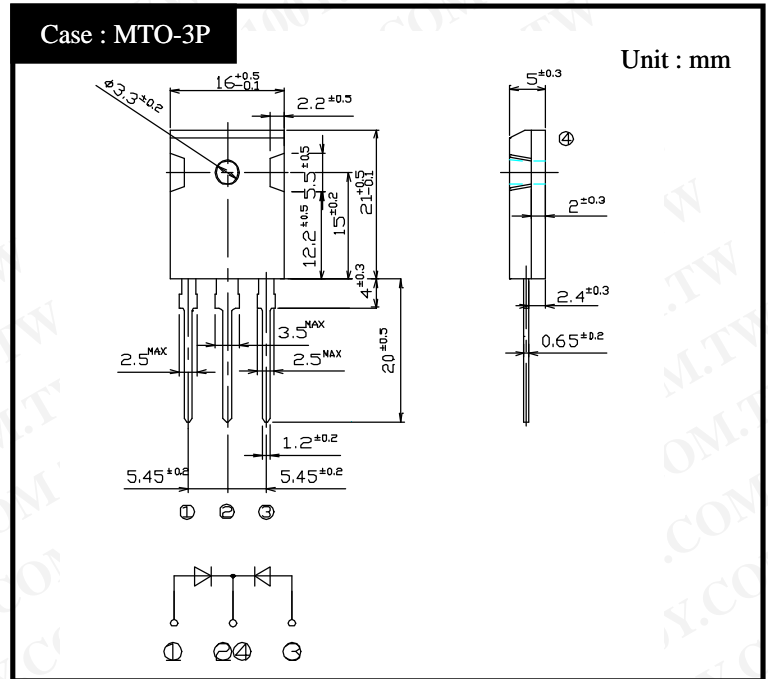
FEATURES

Low noise
 trr50ns
 Small jc

APPLICATION

Switching power supply
 Free Wheel
 Home Appliances, Office Equipment,
 Factory Automation

OUTLINE DIMENSIONS



RATINGS

Absolute Maximum Ratings (If not specified Tc=25)

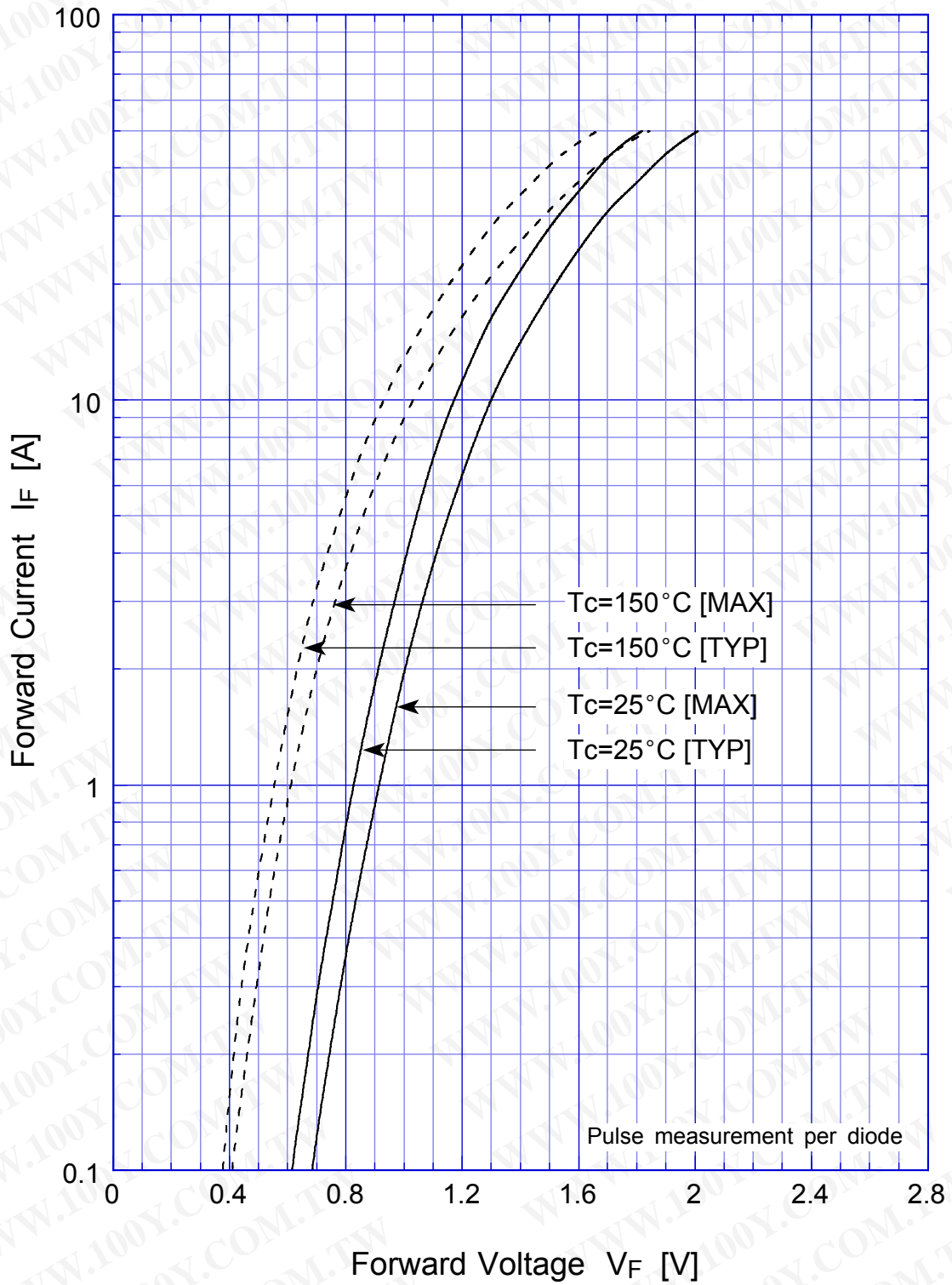
Item	Symbol	Conditions	Ratings	Unit
Storage Temperature	T _{stg}		-40 ~ 150	
Operating Junction Temperature	T _j		150	
Maximum Reverse Voltage	V _{RM}		400	V
Average Rectified Forward Current	I _o	50Hz sine wave, R-load, Rating for each diode I _o /2, Tc=116	20	A
Peak Surge Forward Current	I _{FSM}	50Hz sine wave, Non-repetitive 1 cycle peak value, T _j =25	120	A
Mounting Torque	TOR	(Recommended torque 0.5N·m)	0.8	N·m

Electrical Characteristics (If not specified Tc=25)

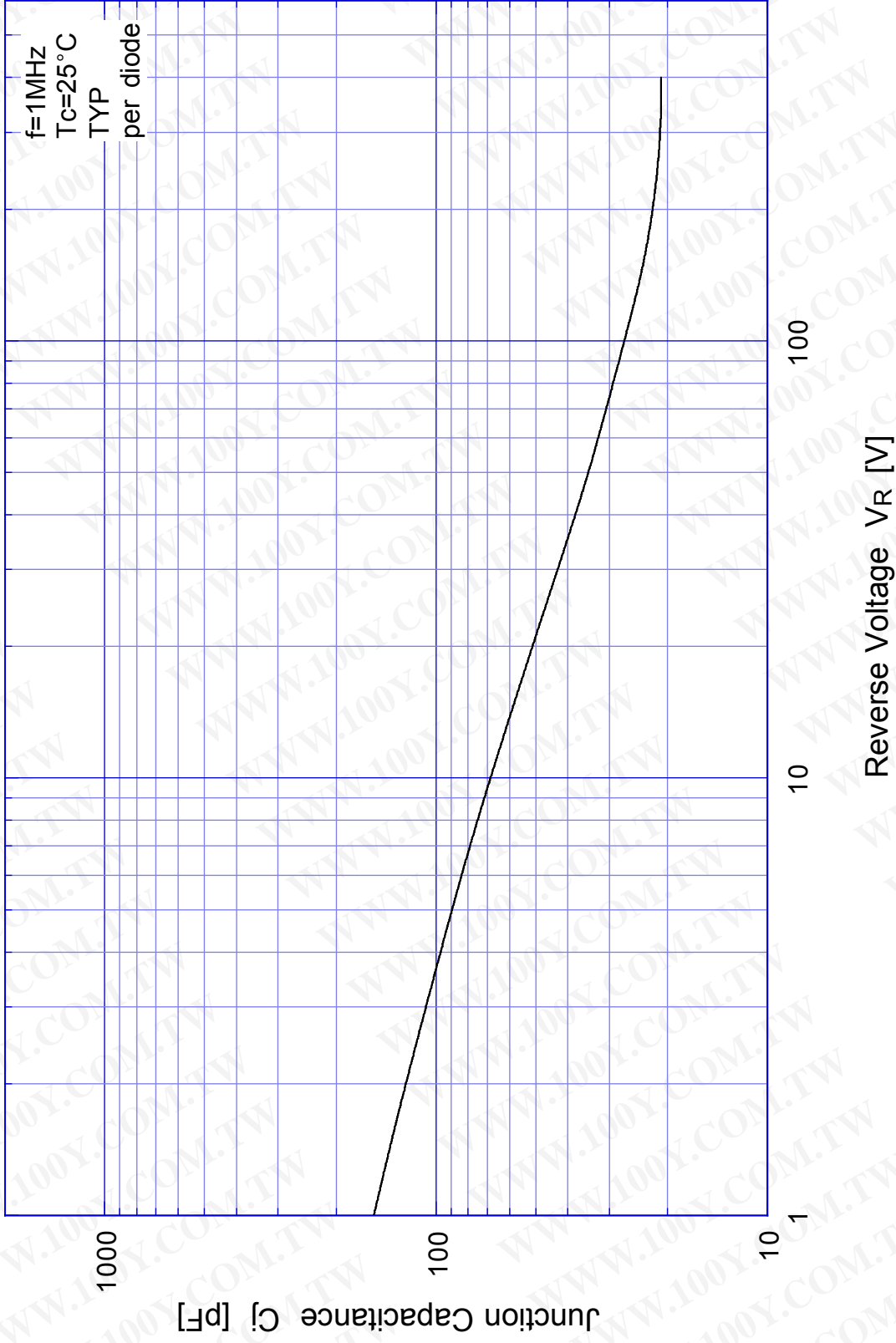
Item	Symbol	Conditions	Ratings	Unit
Forward Voltage	V _F	I _F =10A, Pulse measurement, Rating of per diode	Max.1.3	V
Reverse Current	I _R	V _R =V _{RM} , Pulse measurement, Rating of per diode	Max.10	μA
Reverse Recovery Time	trr	I _F =0.5A, I _R =1A, Rating of per diode	Max.50	ns
Thermal Resistance	jc	junction to case	Max.1.2	/W

S20LC40

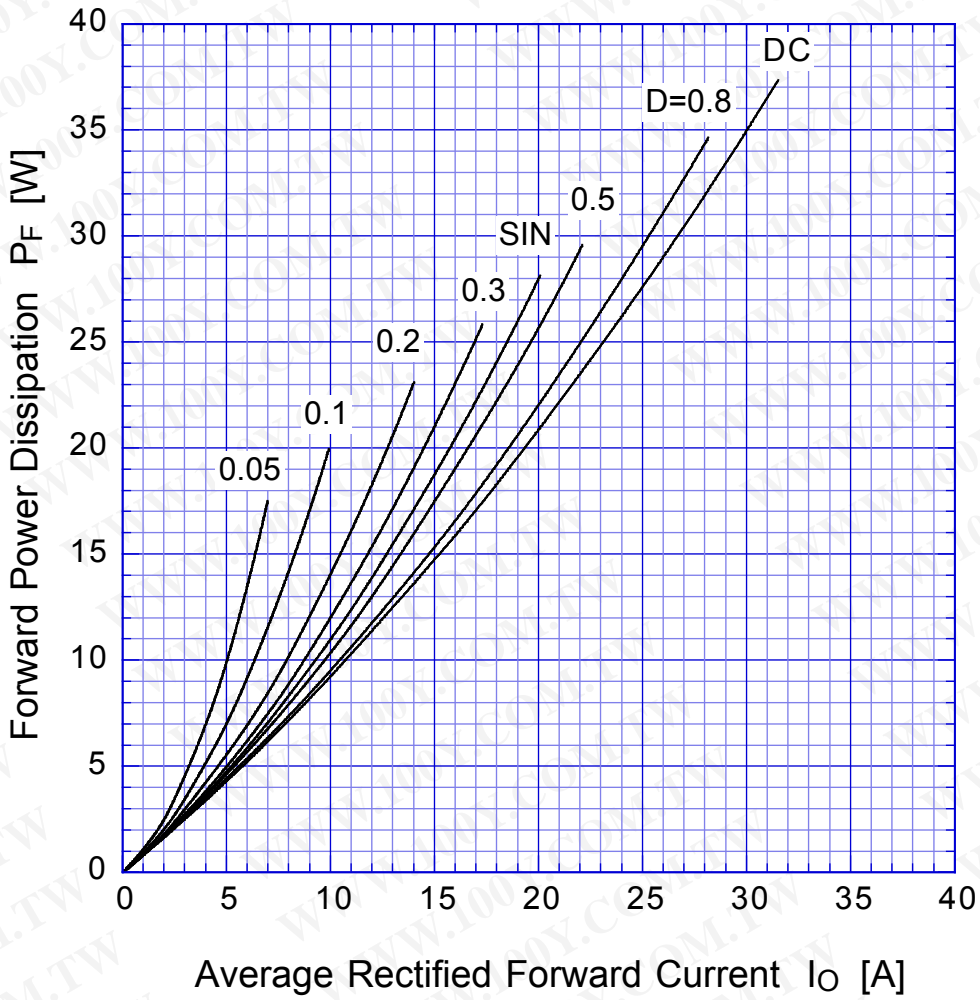
Forward Voltage



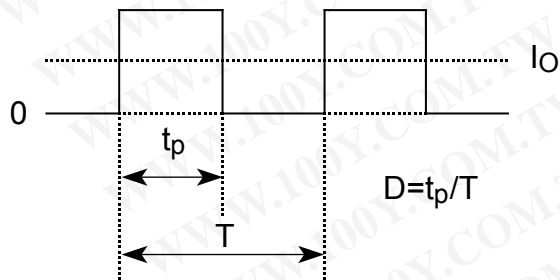
S20LC40 Junction Capacitance



S20LC40 Forward Power Dissipation

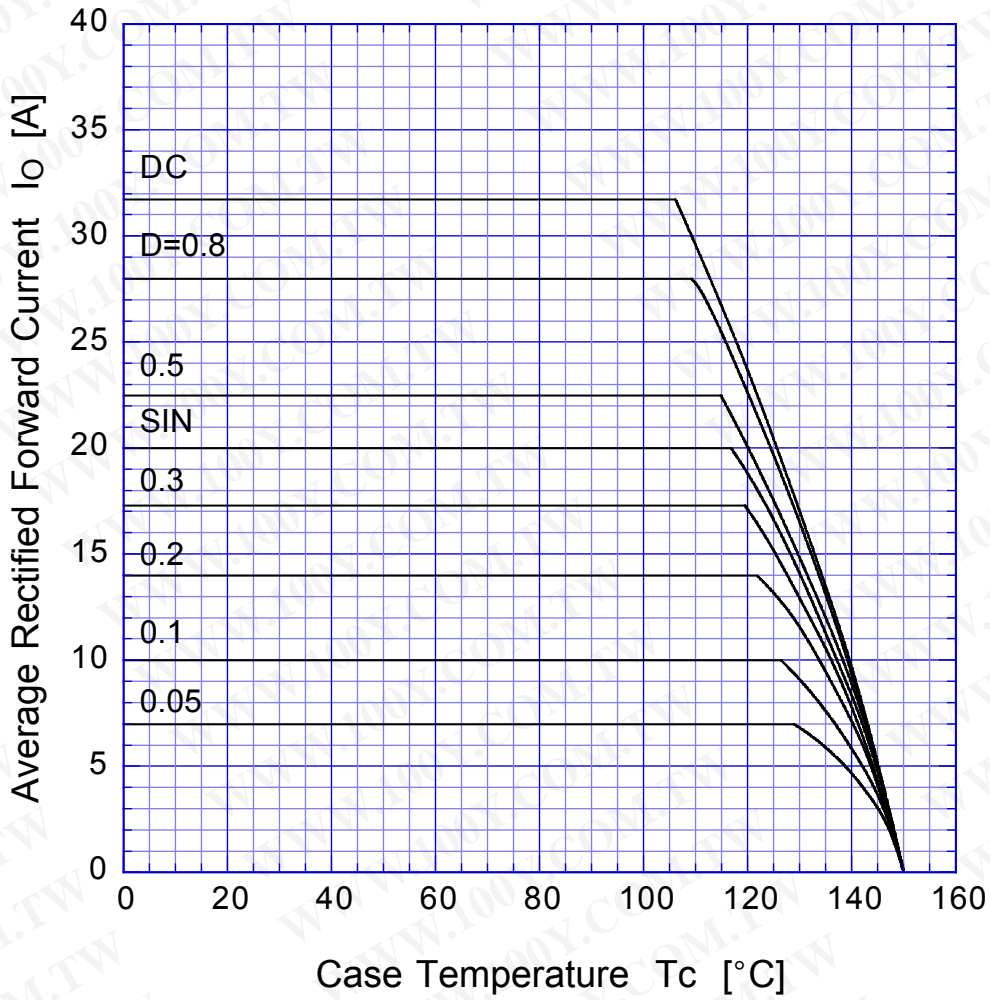


$T_j = T_{jmax}$

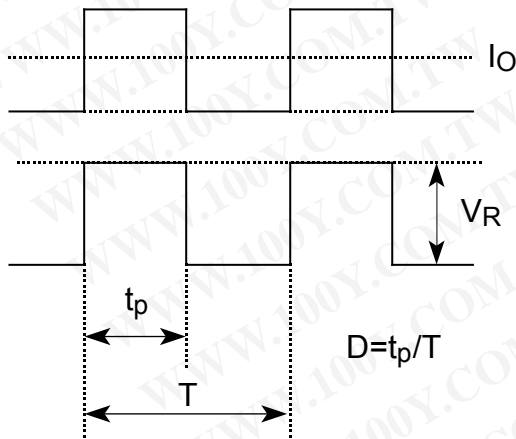


S20LC40

Derating Curve



$$V_R = V_{RM}$$



S20LC40

Peak Surge Forward Capability

