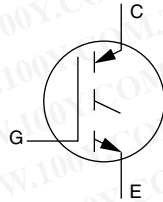


Insulated Gate Bipolar Transistor (Ultrafast Speed IGBT), 100 A



SOT-227



n-channel

FEATURES

- Ultrafast: Optimized for minimum saturation voltage and speed up to 40 kHz in hard switching, > 200 kHz in resonant mode
- Very low conduction and switching losses
- Fully isolate package (2500 V_{AC/RMS})
- Very low internal inductance (≤ 5 nH typical)
- Industry standard outline
- UL pending
- Compliant to RoHS directive 2002/95/EC
- Designed and qualified for industrial level



RoHS
COMPLIANT

PRODUCT SUMMARY

V _{CES}	600 V
V _{CE(on)} (typical)	1.92 V
V _{GE}	15 V
I _C	100 A

BENEFITS

- Designed for increased operating efficiency in power conversion: UPS, SMPS, welding, induction heating
- Lower overall losses available at frequencies = 20 kHz
- Easy to assemble and parallel
- Direct mounting to heatsink
- Lower EMI, requires less snubbing
- Plug-in compatible with other SOT-227 packages

ABSOLUTE MAXIMUM RATINGS

PARAMETER	SYMBOL	TEST CONDITIONS	MAX.	UNITS
Collector to emitter breakdown voltage	V _{CES}		600	V
Continuous collector current	I _C	T _C = 25 °C	200	A
		T _C = 100 °C	100	
Pulsed collector current	I _{CM}		400	
Clamped inductive load current	I _{LM}	V _{CC} = 80 % (V _{CES}), V _{GE} = 20 V, L = 10 μH, R _G = 2.0 Ω, See fig. 13a	400	
Gate to emitter voltage	V _{GE}		± 20	V
Reverse voltage avalanche energy	E _{ARV}	Repetitive rating; pulse width limited by maximum junction temperature	160	mJ
RMS isolation voltage	V _{ISOL}	Any terminal to case, t = 1 minute	2500	V
Maximum power dissipation	P _D	T _C = 25 °C	500	W
		T _C = 100 °C	200	
Operating junction and storage temperature range	T _J , T _{Stg}		- 55 to + 150	°C
Mounting torque		6-32 or M3 screw	1.3 (12)	N · m (lbf · in)

THERMAL AND MECHANICAL SPECIFICATIONS

PARAMETER	SYMBOL	TYP.	MAX.	UNITS
Junction to case	R _{thJC}	-	0.25	°C/W
Case to sink, flat, greased surface	R _{thCS}	0.05	-	
Weight of module		30	-	g

Vishay High Power Products Insulated Gate Bipolar Transistor
 (Ultrafast Speed IGBT), 100 A

ELECTRICAL SPECIFICATIONS ($T_J = 25\text{ }^\circ\text{C}$ unless otherwise specified)						
PARAMETER	SYMBOL	TEST CONDITIONS	MIN.	TYP.	MAX.	UNITS
Collector to emitter breakdown voltage	$V_{(BR)CES}$	$V_{GE} = 0\text{ V}$, $I_C = 250\text{ }\mu\text{A}$	600	-	-	V
Emitter to collector breakdown voltage	$V_{(BR)ECS}$	$V_{GE} = 0\text{ V}$, $I_C = 1.0\text{ A}$ Pulse width $\leq 80\text{ }\mu\text{s}$; duty factor $\leq 0.1\%$	18	-	-	
Temperature coeff. of breakdown voltage	$\Delta V_{(BR)CES}/\Delta T_J$	$V_{GE} = 0\text{ V}$, $I_C = 10\text{ mA}$	-	0.38	-	V/ $^\circ\text{C}$
Collector to emitter saturation voltage	$V_{CE(on)}$	$I_C = 100\text{ A}$	-	1.60	1.9	V
		$I_C = 200\text{ A}$	-	1.92	-	
		$I_C = 100\text{ A}$, $T_J = 150\text{ }^\circ\text{C}$	-	1.54	-	
Gate threshold voltage	$V_{GE(th)}$	$V_{CE} = V_{GE}$, $I_C = 250\text{ }\mu\text{A}$	3.0	-	6.0	
Temperature coeff. of threshold voltage	$\Delta V_{GE(th)}/\Delta T_J$	$V_{CE} = V_{GE}$, $I_C = 2.0\text{ mA}$	-	-11	-	mV/ $^\circ\text{C}$
Forward transconductance	g_{fe}	$V_{CE} = 100\text{ V}$, $I_C = 100\text{ A}$ Pulse width $5.0\text{ }\mu\text{s}$, single shot	79	-	-	S
Zero gate voltage collector current	I_{CES}	$V_{GE} = 0\text{ V}$, $V_{CE} = 600\text{ V}$	-	-	1.0	mA
		$V_{GE} = 0\text{ V}$, $V_{CE} = 600\text{ V}$, $T_J = 150\text{ }^\circ\text{C}$	-	-	10	
Gate to emitter leakage current	I_{GES}	$V_{GE} = \pm 20\text{ V}$	-	-	± 250	nA

SWITCHING CHARACTERISTICS ($T_J = 25\text{ }^\circ\text{C}$ unless otherwise specified)						
PARAMETER	SYMBOL	TEST CONDITIONS	MIN.	TYP.	MAX.	UNITS
Total gate charge (turn-on)	Q_g	$I_C = 100\text{ A}$	-	770	1200	nC
Gate-emitter charge (turn-on)	Q_{ge}	$V_{CC} = 400\text{ V}$	-	100	150	
Gate-collector charge (turn-on)	Q_{gc}	$V_{GE} = 15\text{ V}$; See fig. 8	-	260	380	
Turn-on delay time	$t_{d(on)}$	$T_J = 25\text{ }^\circ\text{C}$ $I_C = 100\text{ A}$	-	54	-	ns
Rise time	t_r		$V_{CC} = 480\text{ V}$	-	79	
Turn-off delay time	$t_{d(off)}$	$V_{CC} = 480\text{ V}$ $V_{GE} = 15\text{ V}$	-	130	200	ns
Fall time	t_f		$R_G = 2.0\text{ }\Omega$	-	300	
Turn-on switching loss	E_{on}	Energy losses include "tail" See fig. 9, 10, 14	-	0.98	-	mJ
Turn-off switching loss	E_{off}		-	3.48	-	
Total switching loss	E_{ts}		-	4.46	7.6	
Turn-on delay time	$t_{d(on)}$	$T_J = 150\text{ }^\circ\text{C}$ $I_C = 100\text{ A}$, $V_{CC} = 480\text{ V}$	-	56	-	ns
Rise time	t_r		$V_{GE} = 15\text{ V}$, $R_G = 2.0\text{ }\Omega$	-	75	
Turn-off delay time	$t_{d(off)}$	Energy losses include "tail" See fig. 10, 11, 14	-	160	-	ns
Fall time	t_f		-	-	460	
Total switching loss	E_{ts}		-	7.24	-	mJ
Internal emitter inductance	L_E	Measured 5 mm from package	-	5.0	-	nH
Input capacitance	C_{ies}	$V_{GE} = 0\text{ V}$	-	16 500	-	pF
Output capacitance	C_{oes}	$V_{CC} = 30\text{ V}$	-	1000	-	
Reverse transfer capacitance	C_{res}	$f = 1.0\text{ MHz}$; See fig. 7	-	200	-	

勝特力材料 886-3-5753170
 勝特力电子(上海) 86-21-34970699
 勝特力电子(深圳) 86-755-83298787
 Http://www.100y.com.tw

Insulated Gate Bipolar Transistor Vishay High Power Products (Ultrafast Speed IGBT), 100 A

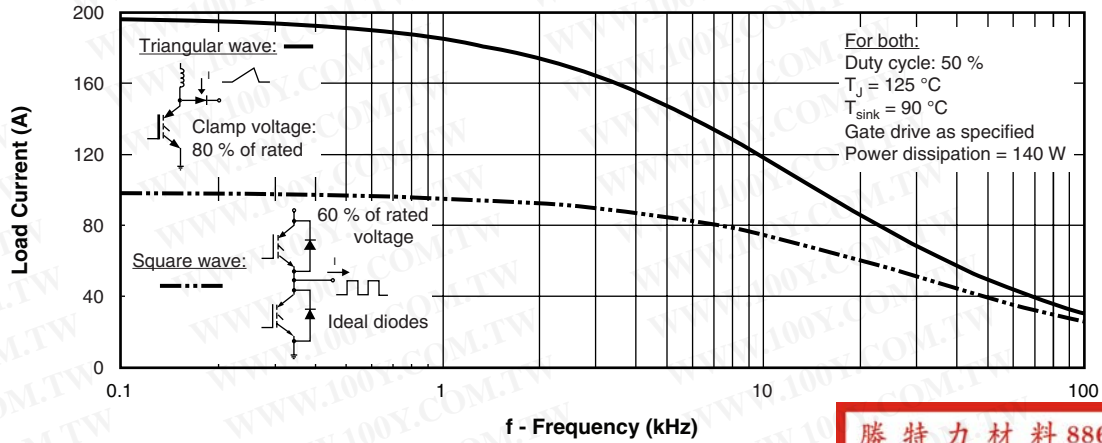


Fig. 1 - Typical Load Current vs. Frequency
(Load Current = I_{RMS} of Fundamental)

勝特力材料 886-3-5753170
 勝特力电子(上海) 86-21-34970699
 勝特力电子(深圳) 86-755-83298787
[Http://www.100y.com.tw](http://www.100y.com.tw)

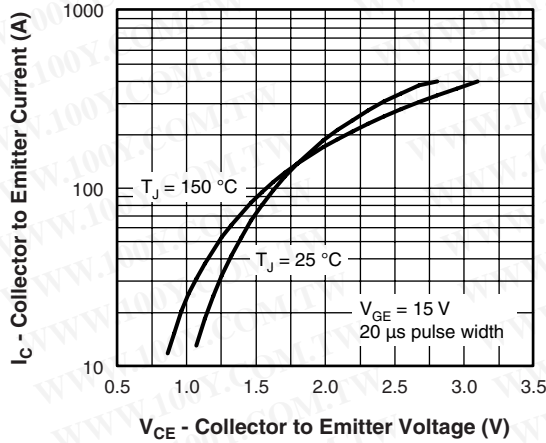


Fig. 2 - Typical Output Characteristics

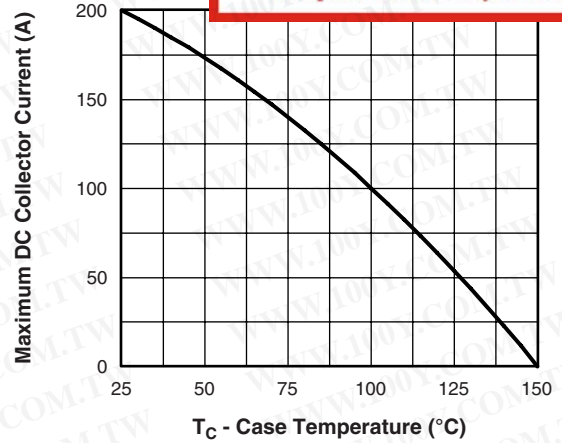


Fig. 4 - Maximum Collector Current vs. Case Temperature

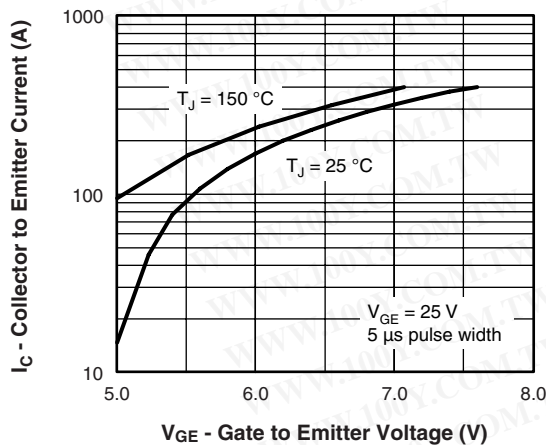


Fig. 3 - Typical Transfer Characteristics

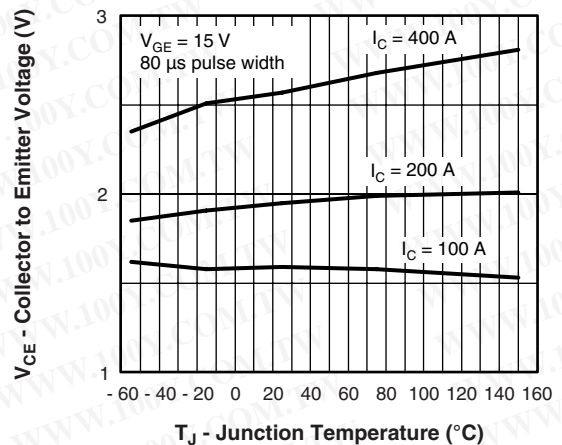


Fig. 5 - Typical Collector to Emitter Voltage vs. Junction Temperature

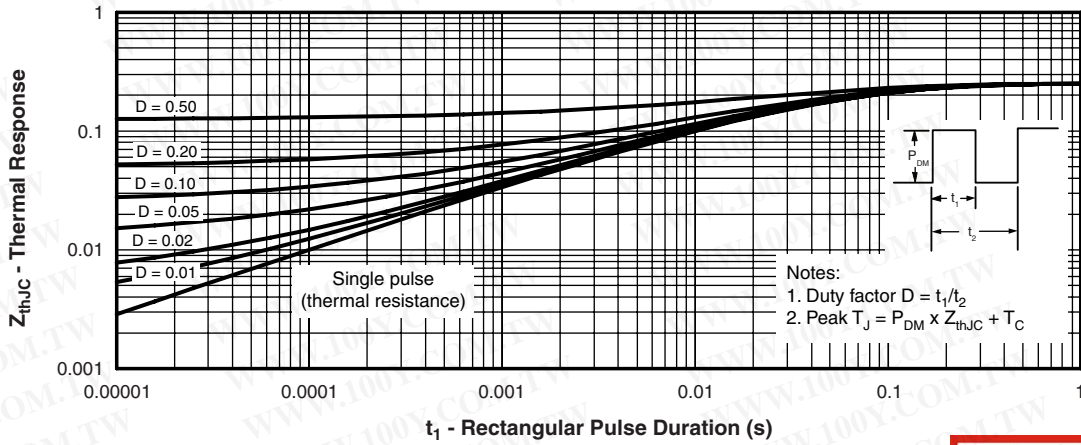


Fig. 6 - Maximum Effective Transient Thermal Impedance, Junction to Case

勝特力材料 886-3-5753170
 勝特力电子(上海) 86-21-34970699
 勝特力电子(深圳) 86-755-83298787
[Http://www.100y.com.tw](http://www.100y.com.tw)

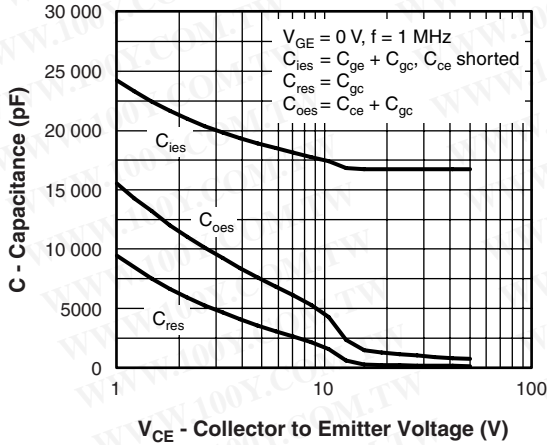


Fig. 7 - Typical Capacitance vs. Collector to Emitter Voltage

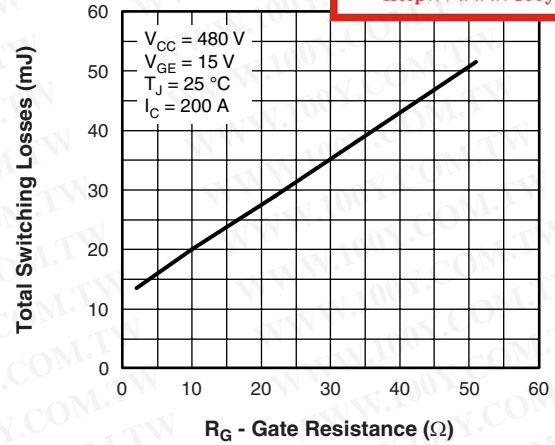


Fig. 9 - Typical Switching Losses vs. Gate Resistance

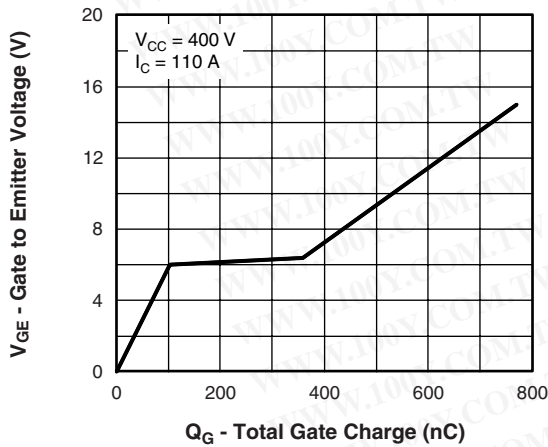


Fig. 8 - Typical Gate Charge vs. Gate to Emitter Voltage

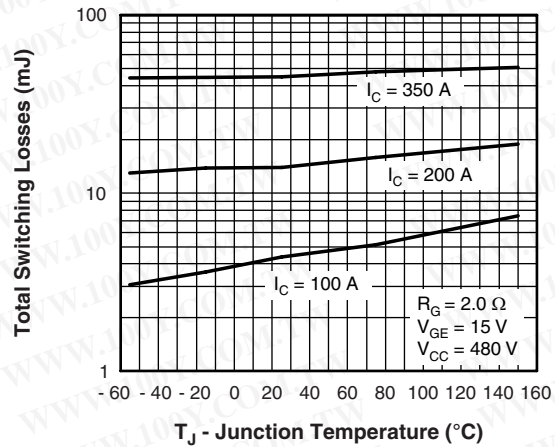


Fig. 10 - Typical Switching Losses vs. Junction Temperature

Insulated Gate Bipolar Transistor Vishay High Power Products (Ultrafast Speed IGBT), 100 A

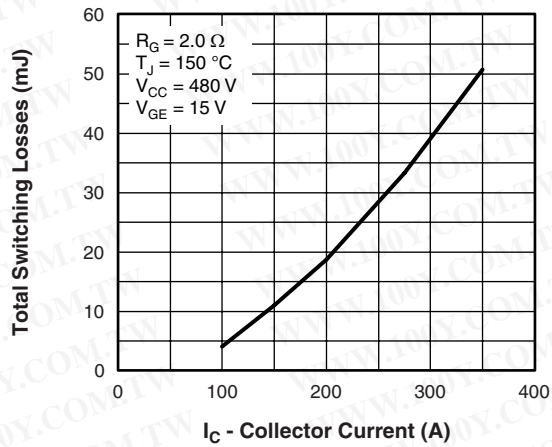


Fig. 11 - Typical Switching Losses vs. Collector Current

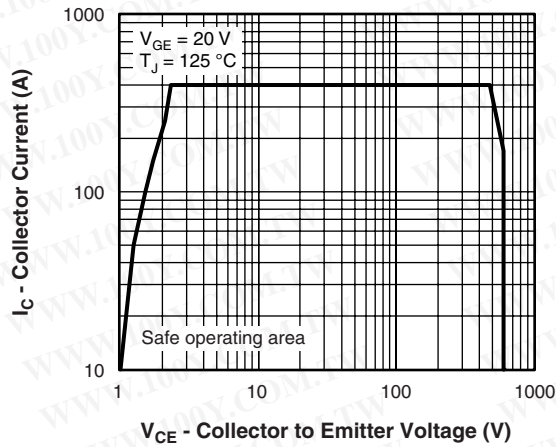
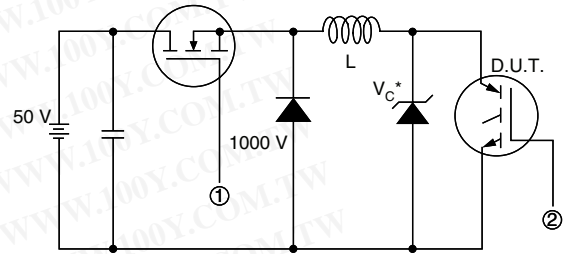


Fig. 12 - Turn-Off SOA



* Driver same type as D.U.T.; $V_C = 80\%$ of V_{CE} (max)

Note: Due to the 50 V power supply, pulse width and inductor will increase to obtain rated I_D

Fig. 13a - Clamped Inductive Load Test Circuit

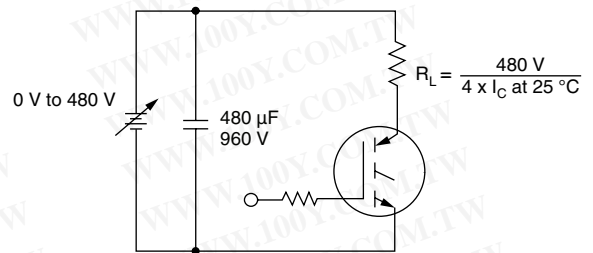
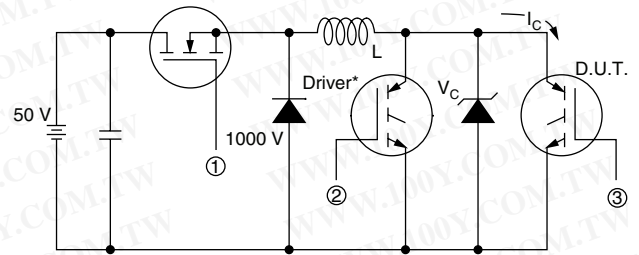


Fig. 13b - Pulsed Collector Current Test Circuit



* Driver same type as D.U.T., $V_C = 480$ V

Fig. 14a - Switching Loss Test Circuit

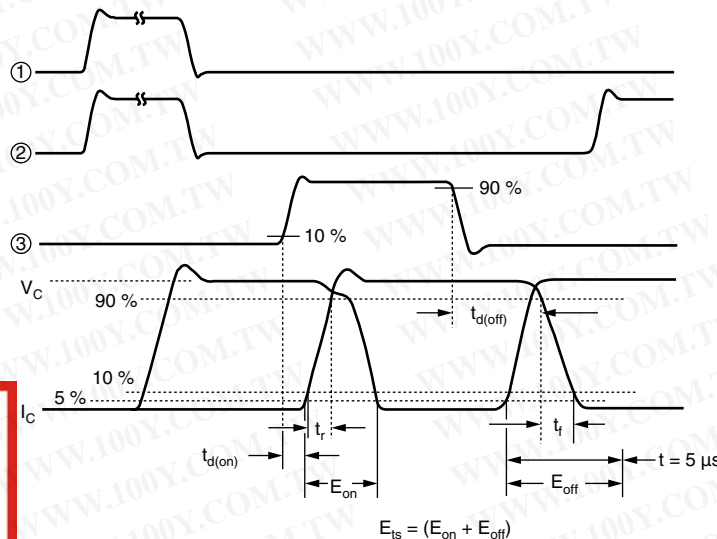


Fig. 14b - Switching Loss Waveforms

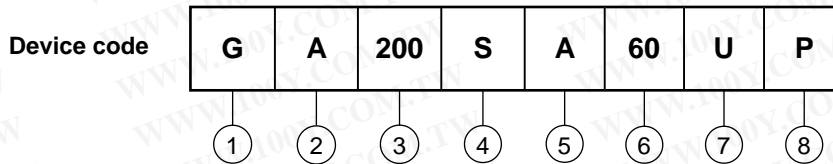
勝特力材料 886-3-5753170
 勝特力电子(上海) 86-21-34970699
 勝特力电子(深圳) 86-755-83298787
[Http://www.100y.com.tw](http://www.100y.com.tw)

GA200SA60UP



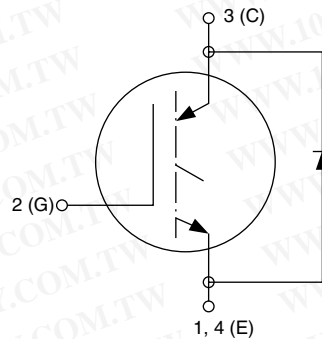
Vishay High Power Products Insulated Gate Bipolar Transistor
(Ultrafast Speed IGBT), 100 A

ORDERING INFORMATION TABLE

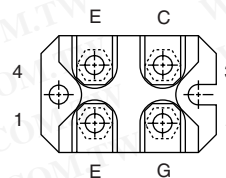


- 1** - Insulated Gate Bipolar Transistor (IGBT)
- 2** - Generation 4, IGBT silicon, DBC construction
- 3** - Current rating (200 = 200 A)
- 4** - Single switch, no diode
- 5** - SOT-227
- 6** - Voltage rating (60 = 600 V)
- 7** - Speed/type (U = Ultrafast)
- 8** -
 - None = Standard production
 - P = Lead (Pb)-free

CIRCUIT CONFIGURATION



Lead assignment



LINKS TO RELATED DOCUMENTS

Dimensions	www.vishay.com/doc?95036
Packaging information	www.vishay.com/doc?95037

勝特力材料 886-3-5753170
 勝特力电子(上海) 86-21-34970699
 勝特力电子(深圳) 86-755-83298787
[Http://www.100y.com.tw](http://www.100y.com.tw)



Disclaimer

All product specifications and data are subject to change without notice.

Vishay Intertechnology, Inc., its affiliates, agents, and employees, and all persons acting on its or their behalf (collectively, "Vishay"), disclaim any and all liability for any errors, inaccuracies or incompleteness contained herein or in any other disclosure relating to any product.

Vishay disclaims any and all liability arising out of the use or application of any product described herein or of any information provided herein to the maximum extent permitted by law. The product specifications do not expand or otherwise modify Vishay's terms and conditions of purchase, including but not limited to the warranty expressed therein, which apply to these products.

No license, express or implied, by estoppel or otherwise, to any intellectual property rights is granted by this document or by any conduct of Vishay.

The products shown herein are not designed for use in medical, life-saving, or life-sustaining applications unless otherwise expressly indicated. Customers using or selling Vishay products not expressly indicated for use in such applications do so entirely at their own risk and agree to fully indemnify Vishay for any damages arising or resulting from such use or sale. Please contact authorized Vishay personnel to obtain written terms and conditions regarding products designed for such applications.

Product names and markings noted herein may be trademarks of their respective owners.

勝特力材料 886-3-5753170
勝特力电子(上海) 86-21-34970699
勝特力电子(深圳) 86-755-83298787
[Http://www.100y.com.tw](http://www.100y.com.tw)