

4496203 HITACHI/ LOGIC/ARRAYS/MEM

04E 12622 D

# HM6264 Series

**Maintenance Only**  
(Substitute HM6264A)

T-46-23-12

8192-word x 8-bit High Speed CMOS Static RAM

■ FEATURES

- Fast access Time 100ns/120ns/150ns (max.)
- Low Power Standby Standby: 0.1mW (typ.)  
10μW (typ.) L-/LL-version  
Operating: 200mW/MHz (typ.)
- Low Power Operation
- Single +5V Supply
- Completely Static Memory. . . . No clock or Timing Strobe Required
- Equal Access and Cycle Time
- Common Data Input and Output, Three State Output
- Directly TTL Compatible: All Input and Output
- Standard 28pin Package Configuration
- Pin Out Compatible with 64K EPROM HN482764
- Capability of Battery Back Up Operation (L-/LL-version)

■ ORDERING INFORMATION

Type No.	Access Time	Package
HM6264P-10	100ns	600 mil 28 pin Plastic DIP
HM6264P-12	120ns	
HM6264P-15	150ns	
HM6264LP-10	100ns	600 mil 28 pin Plastic DIP
HM6264LP-12	120ns	
HM6264LP-15	150ns	
HM6264LP-10L	100ns	600 mil 28 pin Plastic DIP
HM6264LP-12L	120ns	
HM6264LP-15L	150ns	
HM6264FP-10	100ns	28 pin Plastic SOP (Note)
HM6264FP-12	120ns	
HM6264FP-15	150ns	
HM6264LFP-10	100ns	28 pin Plastic SOP (Note)
HM6264LFP-12	120ns	
HM6264LFP-15	150ns	
HM6264LFP-10L	100ns	28 pin Plastic SOP (Note)
HM6264LFP-12L	120ns	
HM6264LFP-15L	150ns	

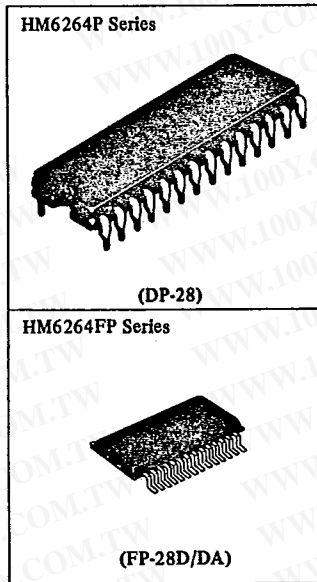
Note) A character T is added to the end of type No. for SOP of 3.00 mm (max.) thickness.

■ ABSOLUTE MAXIMUM RATINGS

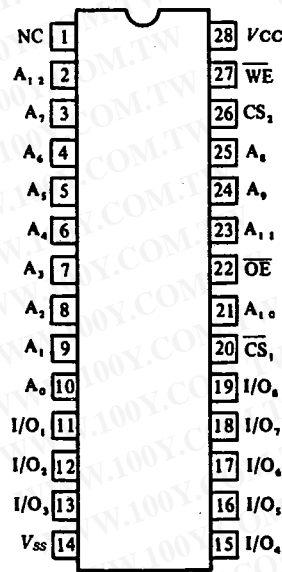
Item	Symbol	Rating	Unit
Terminal Voltage *1	V <sub>T</sub>	-0.5*2 to +7.0	V
Power Dissipation	P <sub>r</sub>	1.0	W
Operating Temperature	T <sub>opr</sub>	0 to +70	°C
Storage Temperature	T <sub>stg</sub>	-55 to +125	°C
Storage Temperature Under Bias	T <sub>bias</sub>	-10 to +85	°C

Notes) \*1. With respect to V<sub>SS</sub>  
\*2. -3.0V for pulse width ≤ 50ns

Note) This device is not available for new application.



■ PIN ARRANGEMENT



(Top View)



Hitachi America Ltd. • 2210 O'Toole Ave. • San Jose, CA 95131 • (408) 435-8300

125

勝特力材料 886-3-5753170  
 勝特力电子(上海) 86-21-34970699  
 勝特力电子(深圳) 86-755-83298787  
[Http://www.100y.com.tw](http://www.100y.com.tw)

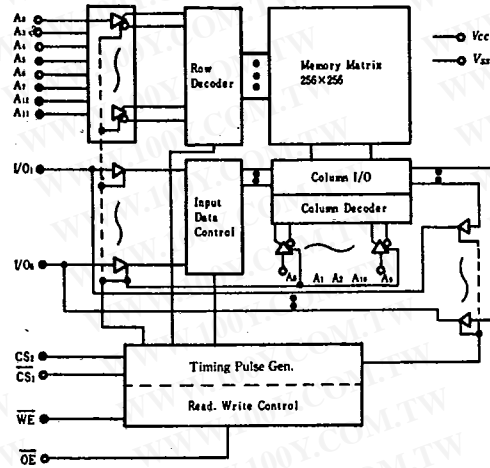
4496203 HITACHI/ LOGIC/ARRAYS/MEM

04E 12623 D

HM6264 Series

T-46-23-12

■ BLOCK DIAGRAM



■ TRUTH TABLE

WE	CS <sub>1</sub>	CS <sub>2</sub>	OE	Mode	I/O Pin	V <sub>CC</sub> Current	Note
X	H	X	X	Not Selected (Power Down)	High Z	I <sub>SB</sub> , I <sub>SB1</sub>	
X	X	L	X		High Z	I <sub>SB</sub> , I <sub>SB2</sub>	
H	L	H	H	Output Disabled	High Z	I <sub>CC</sub> , I <sub>CC1</sub>	
H	L	H	L	Read	Dout	I <sub>CC</sub> , I <sub>CC1</sub>	
L	L	H	H	Write	Din	I <sub>CC</sub> , I <sub>CC1</sub>	Write Cycle (1)
L	L	H	L		Din	I <sub>CC</sub> , I <sub>CC1</sub>	Write Cycle (2)

X : H or L

■ RECOMMENDED DC OPERATING CONDITIONS (T<sub>a</sub> = 0 to +70°C)

Item	Symbol	min	typ	max	Unit
Supply Voltage	V <sub>CC</sub>	4.5	5.0	5.5	V
	V <sub>SS</sub>	0	0	0	V
Input Voltage	V <sub>IH</sub>	2.2	-	6.0	V
	V <sub>IL</sub>	-0.3*1	-	0.8	V

Note) \*1. -3.0V for pulse width ≤ 50ns

■ DC AND OPERATING CHARACTERISTICS (V<sub>CC</sub> = 5V ± 10%, V<sub>SS</sub> = 0V, T<sub>a</sub> = 0 to +70°C)

Item	Symbol	Test Condition	min	typ*1	max	Unit
Input Leakage Current	I <sub>LI</sub> †	V <sub>in</sub> =V <sub>SS</sub> to V <sub>CC</sub>	-	-	2	μA
Output Leakage Current	I <sub>LO</sub> †	CS <sub>1</sub> =V <sub>IH</sub> or CS <sub>2</sub> =V <sub>IL</sub> or OE=V <sub>IH</sub> or WE=V <sub>IL</sub> , V <sub>I/O</sub> =V <sub>SS</sub> to V <sub>CC</sub>	-	-	2	μA
Operating Power Supply Current	I <sub>CC</sub>	CS <sub>1</sub> =V <sub>IL</sub> , CS <sub>2</sub> =V <sub>IH</sub> , I <sub>I/O</sub> =0mA	-	40	80	mA
Average Operating Current	I <sub>CC1</sub>	Min. cycle, duty=100%, I <sub>I/O</sub> =0mA	-	60	110	mA
	I <sub>SB</sub>	CS <sub>1</sub> =V <sub>IH</sub> or CS <sub>2</sub> =V <sub>IL</sub>	-	1	3	mA
	I <sub>SB1</sub> *2	CS <sub>1</sub> ≥ V <sub>CC</sub> -0.2V, CS <sub>2</sub> ≥ V <sub>CC</sub> -0.2V or CS <sub>2</sub> ≤ 0.2V	-	0.02	2	mA
			-	2*3	100*3	μA
I <sub>SB2</sub> *2	CS <sub>2</sub> ≤ 0.2V	-	2*4	50*4	μA	
		-	0.02	2	mA	
Output Voltage	V <sub>OL</sub>	I <sub>OL</sub> = 2.1mA	-	-	0.4	V
	V <sub>OH</sub>	I <sub>OH</sub> = -1.0 mA	2.4	-	-	V

Notes) \*1. Typical limits are at V<sub>CC</sub>=5.0V, T<sub>a</sub>=25°C and specified loading.  
 \*2. V<sub>IL</sub> min=-0.3V  
 \*3. This characteristics is guaranteed only for L-version.  
 \*4. This characteristics is guaranteed only for LL-version.



4496203 HITACHI / LOGIC/ARRAYS/MEM

04E 12624 D

HM6264 Series

T-46-23-12

■ CAPACITANCE ( $f = 1\text{MHz}, T_a = 25^\circ\text{C}$ )

Item	Symbol	Test Condition	typ	max	Unit
Input Capacitance	$C_{in}$	$V_{in} = 0\text{V}$	-	6	pF
Input/Output Capacitance	$C_{I/O}$	$V_{I/O} = 0\text{V}$	-	8	pF

Note) This parameter is sampled and not 100% tested.

■ AC CHARACTERISTICS ( $V_{CC} = 5\text{V} \pm 10\%$ ,  $T_a = 0$  to  $+70^\circ\text{C}$ )

● AC TEST CONDITIONS

Input Pulse Levels: 0.8 to 2.4V

Input Rise and Fall Times: 10ns

Input and Output Timing Reference Level: 1.5V

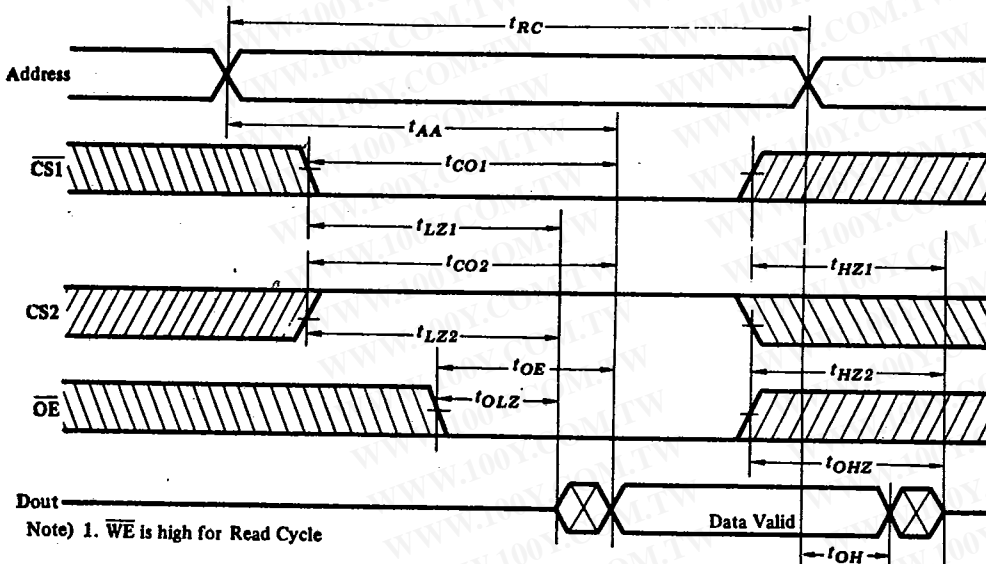
Output Load: 1TTL Gate and  $C_L$  (100pF) (including scope and jig)

● READ CYCLE

Item	Symbol	HM6264-10		HM6264-12		HM6264-15		Unit	
		min	max	min	max	min	max		
Read Cycle Time	$t_{RC}$	100	-	120	-	150	-	ns	
Address Access Time	$t_{AA}$	-	100	-	120	-	150	ns	
Chip Selection to Output	CS1	$t_{CO1}$	-	100	-	120	-	150	ns
	CS2	$t_{CO2}$	-	100	-	120	-	150	ns
Output Enable to Output Valid	$t_{OE}$	-	50	-	60	-	70	ns	
Chip Selection to Output in Low Z	CS1	$t_{LZ1}$	10	-	10	-	15	-	ns
	CS2	$t_{LZ2}$	10	-	10	-	15	-	ns
Output Enable to Output in Low Z	$t_{OLZ}$	5	-	5	-	5	-	ns	
Chip Deselection to Output in High Z	CS1	$t_{HZ1}$	0	35	0	40	0	50	ns
	CS2	$t_{HZ2}$	0	35	0	40	0	50	ns
Output Disable to Output in High Z	$t_{OHZ}$	0	35	0	40	0	50	ns	
Output Hold from Address Change	$t_{OH}$	10	-	10	-	15	-	ns	

- Notes) 1.  $t_{HZ}$  and  $t_{OHZ}$  are defined as the time at which the outputs achieve the open circuit condition and are not referred to output voltage levels.  
 2. At any given temperature and voltage condition,  $t_{HZ}$  max is less than  $t_{LZ}$  min both for a given device and from device to device.

● READ CYCLE



Note) 1.  $\overline{WE}$  is high for Read Cycle



4496203 HITACHI/ LOGIC/ARRAYS/MEM  
HM6264 Series

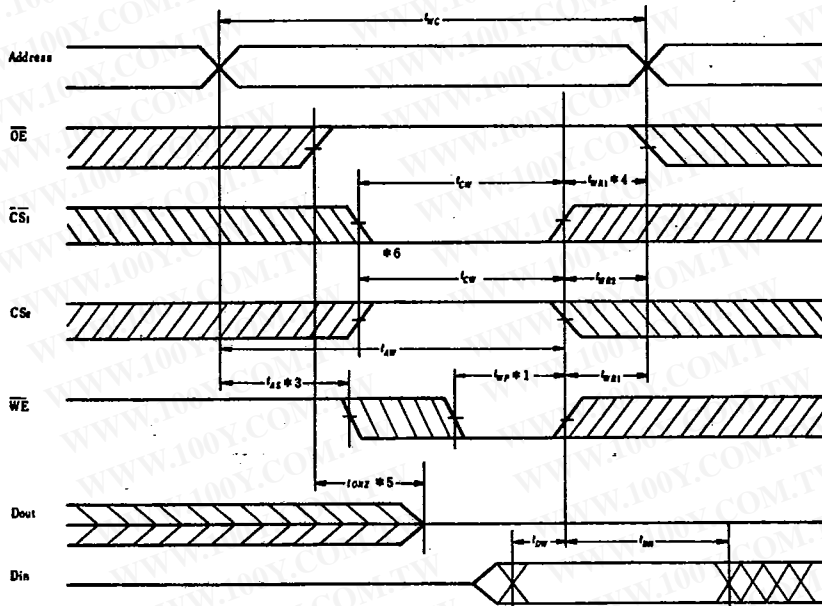
04E 12625 D

T-46-23-12

• WRITE CYCLE

Item	Symbol	HM6264-10		HM6264-12		HM6264-15		Unit	
		min	max	min	max	min	max		
Write Cycle Time	$t_{WC}$	100	-	120	-	150	-	ns	
Chip Selection to End of Write	$t_{CW}$	80	-	85	-	100	-	ns	
Address Setup Time	$t_{AS}$	0	-	0	-	0	-	ns	
Address Valid to End of Write	$t_{AW}$	80	-	85	-	100	-	ns	
Write Pulse Width	$t_{WP}$	60	-	70	-	90	-	ns	
Write Recovery Time	CS1, WE	$t_{WR1}$	5	-	5	-	10	-	ns
	CS2	$t_{WR2}$	15	-	15	-	15	-	ns
Write to Output in High Z	$t_{WHZ}$	0	35	0	40	0	50	ns	
Data to Write Time Overlap	$t_{DW}$	40	-	50	-	60	-	ns	
Data Hold from Write Time	$t_{DH}$	0	-	0	-	0	-	ns	
$\overline{OE}$ to Output in High Z	$t_{OHZ}$	0	35	0	40	0	50	ns	
Output Active from End of Write	$t_{OW}$	5	-	5	-	10	-	ns	

• WRITE CYCLE (1) ( $\overline{OE}$  clock)

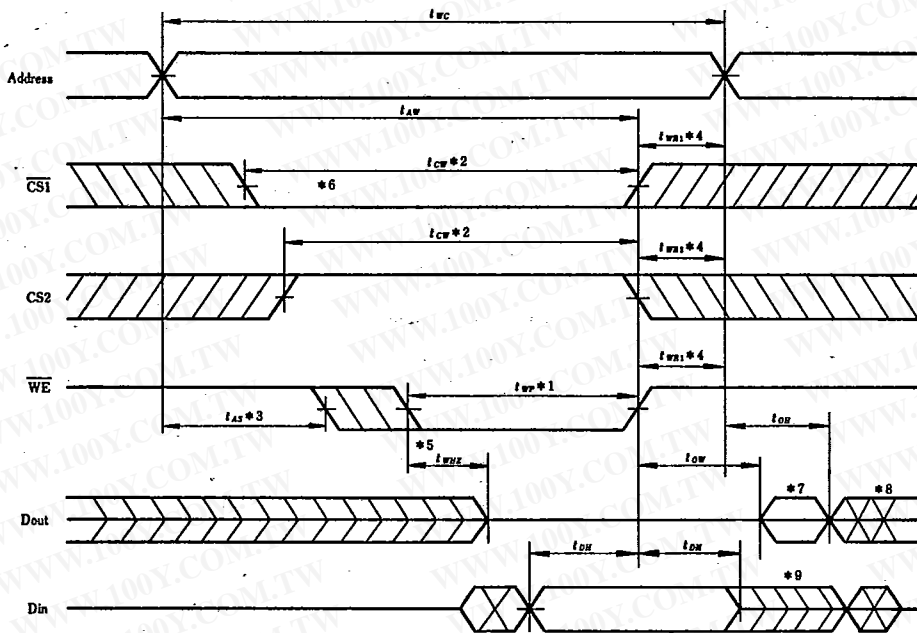


4496203 HITACHI/ LOGIC/ARRAYS/MEM

04E 12626 D  
HM6264 Series

T-46-23-12

• WRITE CYCLE (2) ( $\overline{OE}$  Low Fix)



- Notes)
1. A write occurs during the overlap of a low  $\overline{CS1}$ , a high  $\overline{CS2}$  and a low  $\overline{WE}$ . A write begins at the latest transition among  $\overline{CS1}$  going low,  $\overline{CS2}$  going high and  $\overline{WE}$  going low. A write ends at the earliest transition among  $\overline{CS1}$  going high,  $\overline{CS2}$  going low and  $\overline{WE}$  going high.  $t_{WP}$  is measured from the beginning of write to the end of write.
  2.  $t_{CW}$  is measured from the later of  $\overline{CS1}$  going low or  $\overline{CS2}$  going high to the end of write.
  3.  $t_{AS}$  is measured from the address valid to the beginning of write.
  4.  $t_{WR}$  is measured from the end of write to the address change.  
 $t_{WR1}$  applies in case a write ends at  $\overline{CS1}$  or  $\overline{WE}$  going high.  
 $t_{WR2}$  applies in case a write ends at  $\overline{CS2}$  going low.
  5. During this period, I/O pins are in the output state, therefore the input signals of opposite phase to the outputs must not be applied.
  6. If  $\overline{CS1}$  goes low simultaneously with  $\overline{WE}$  going low or after  $\overline{WE}$  going low, the outputs remain in high impedance state.
  7.  $D_{out}$  is the same phase of the latest written data in this write cycle.
  8.  $D_{out}$  is the read data of next address.
  9. If  $\overline{CS1}$  is low and  $\overline{CS2}$  is high during this period, I/O pins are in the output state. Therefore, the input signals of opposite phase to the outputs must not be applied to them.



4496203 HITACHI/ LOGIC/ARRAYS/MEM  
HM6264 Series

04E 12627 D

T-46-23-12

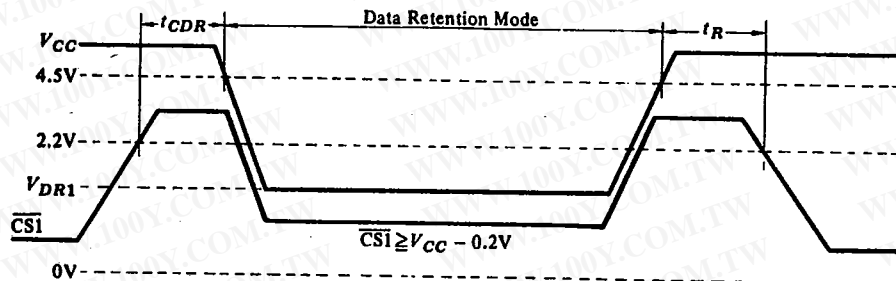
■ LOW  $V_{CC}$  DATA RETENTION CHARACTERISTICS ( $T_a = 0$  to  $+70^\circ\text{C}$ )

This characteristics is guaranteed only for L/LL-version.

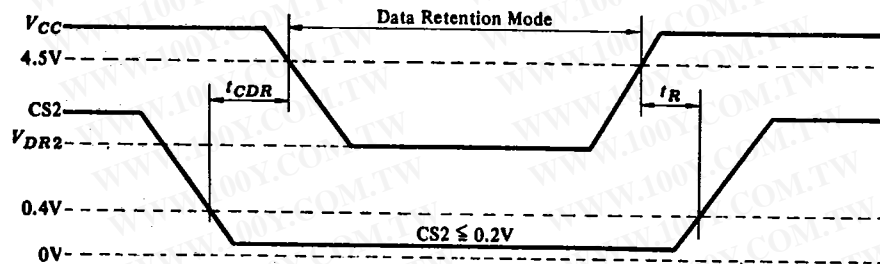
Item	Symbol	Test Condition	min	typ	max	Unit
$V_{CC}$ for Data Retention	$V_{DR1}$	$CS1 \geq V_{CC} - 0.2V$ , $CS2 \geq V_{CC} - 0.2V$ or $CS2 \leq 0.2V$	2.0	-	-	V
	$V_{DR2}$	$CS2 \leq 0.2V$	2.0	-	-	V
Data Retention Current	$I_{CCDR1}$	$V_{CC} = 3.0V$ , $CS1 \geq V_{CC} - 0.2V$	-	1*1	50*1	$\mu\text{A}$
		$CS2 \geq V_{CC} - 0.2V$ or $CS2 \leq 0.2V$	-	1*2	25*2	
	$I_{CCDR2}$	$V_{CC} = 3.0V$ , $CS2 \leq 0.2V$	-	1*1	50*1	$\mu\text{A}$
			-	1*2	25*2	
Chip Deselect to Data Retention Time	$t_{CDR}$	See Retention Waveform	0	-	-	ns
Operation Recovery Time	$t_R$		$t_{RC}^{*3}$	-	-	ns

Notes) \*1.  $V_{IL}$  min =  $-0.3V$ ,  $20\mu\text{A}$  max at  $T_a = 0$  to  $40^\circ\text{C}$ . This characteristics is guaranteed only for L-version.  
\*2.  $V_{IL}$  min =  $-0.3V$ ,  $10\mu\text{A}$  max at  $T_a = 0$  to  $40^\circ\text{C}$ . This characteristics is guaranteed only for LL-version.  
\*3.  $t_{RC}$  = Read Cycle Time

• LOW  $V_{CC}$  DATA RETENTION WAVEFORM (1) ( $\overline{CS1}$  Controlled)



• LOW  $V_{CC}$  DATA RETENTION WAVEFORM (2) ( $CS2$  Controlled)



NOTE: In Data Retention Mode,  $CS2$  controls the Address,  $\overline{WE}$ ,  $\overline{CS1}$ ,  $\overline{OE}$  and  $Din$  buffer. If  $CS2$  controls data retention mode,  $V_{in}$  for these inputs can be in the high impedance state. If  $\overline{CS1}$  controls the data retention mode,  $CS2$  must satisfy either  $CS2 > V_{CC} - 0.2V$  or  $CS2 \leq 0.2V$ . The other input levels (address,  $\overline{WE}$ ,  $\overline{OE}$ ,  $I/O$ ) can be in the high impedance state.



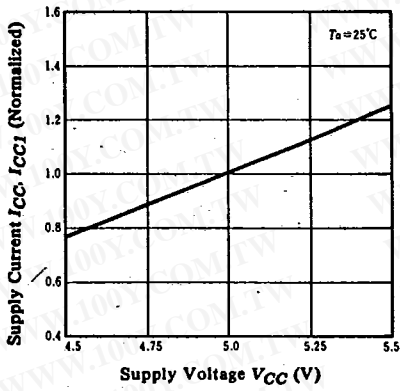
4496203 HITACHI/ LOGIC/ARRAYS/MEM

04E 12628 D

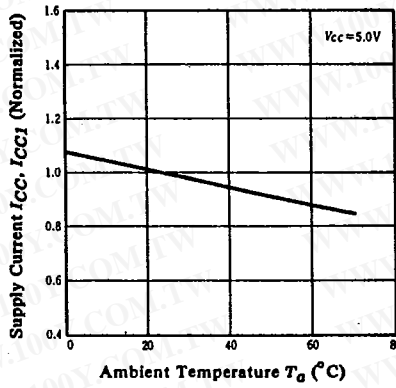
HMG264 Series

T-46-23-12

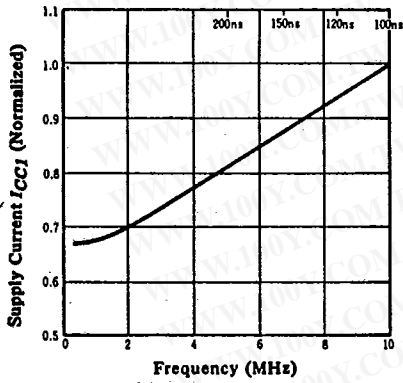
SUPPLY CURRENT vs. SUPPLY VOLTAGE



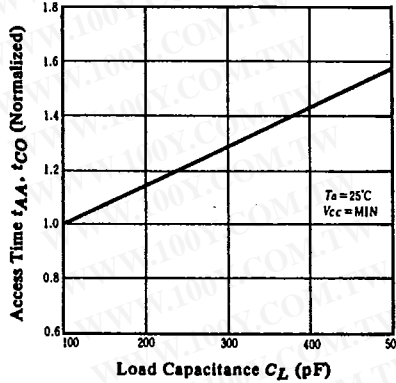
SUPPLY CURRENT vs. AMBIENT TEMPERATURE



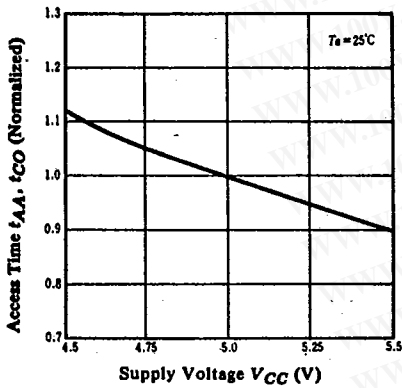
SUPPLY CURRENT vs. FREQUENCY



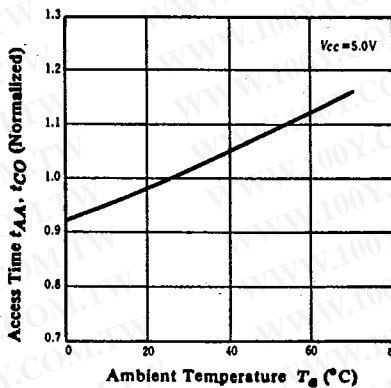
ACCESS TIME vs. LOAD CAPACITANCE



ACCESS TIME vs. SUPPLY VOLTAGE



ACCESS TIME vs. AMBIENT TEMPERATURE

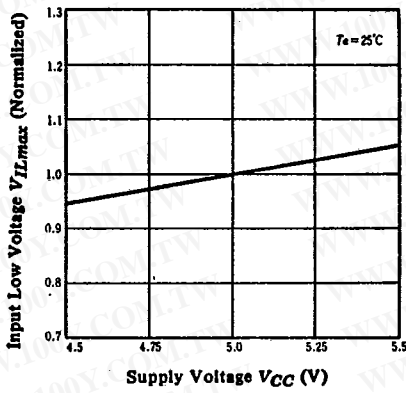


4496203 HITACHI/ LOGIC/ARRAYS/MEM  
HM6264 Series

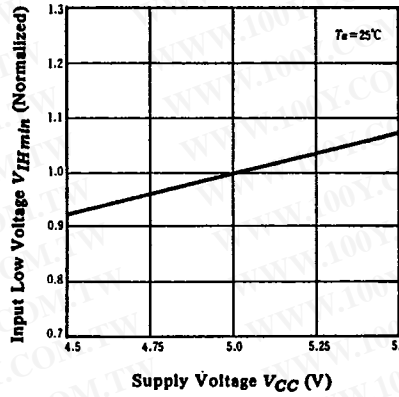
04E 12629 D

T-46-23-72

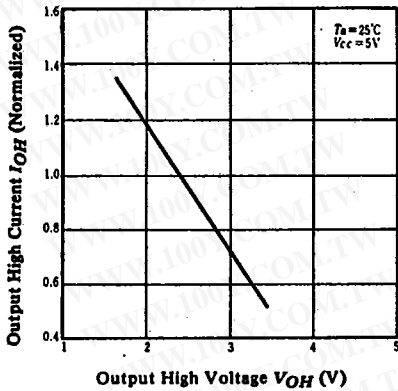
INPUT LOW VOLTAGE vs. SUPPLY VOLTAGE



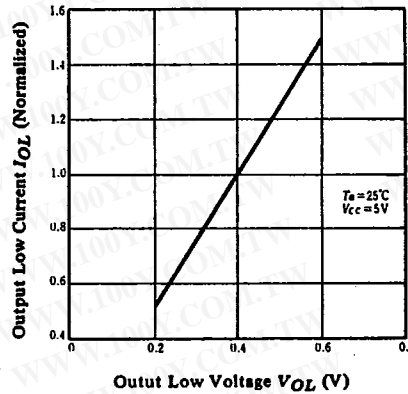
INPUT HIGH VOLTAGE vs. SUPPLY VOLTAGE



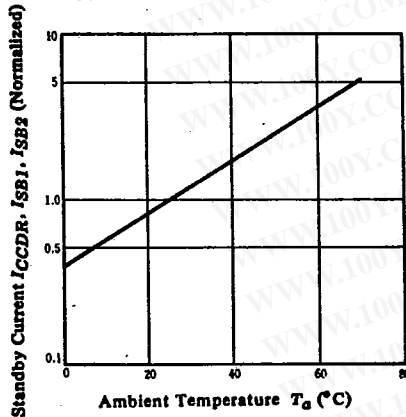
OUTPUT CURRENT vs. OUTPUT VOLTAGE



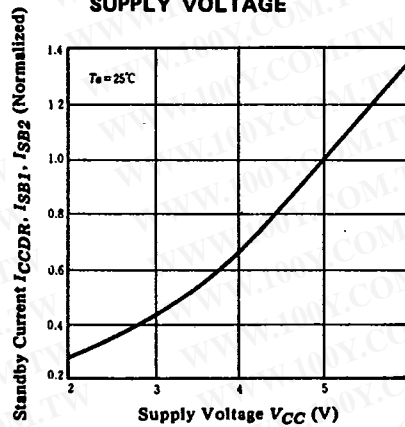
OUTPUT CURRENT vs. OUTPUT VOLTAGE



STANDBY CURRENT vs. AMBIENT TEMPERATURE



STANDBY CURRENT vs. SUPPLY VOLTAGE



Hitachi America Ltd. • 2210 O'Toole Ave. • San Jose, CA 95131 • (408) 435-8300

勝特力材料 886-3-5753170  
 勝特力电子(上海) 86-21-34970699  
 勝特力电子(深圳) 86-755-83298787  
[Http://www.100y.com.tw](http://www.100y.com.tw)