

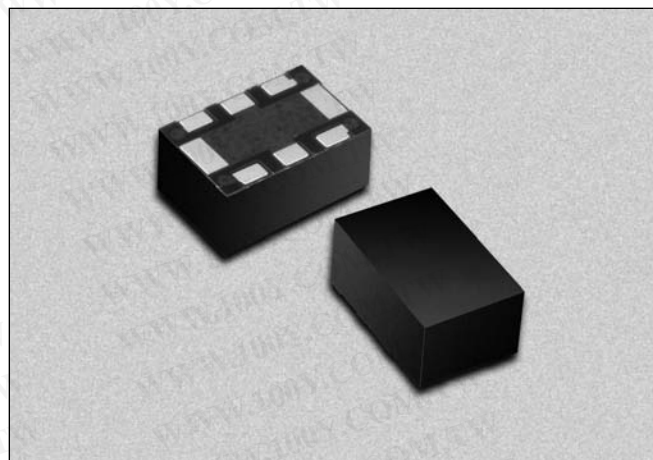
LGA Packaged Phase Shifter for GSM Base Stations



PS094-315

Features

- Designed for GSM 942.5 ± 17.5 MHz Band
- 100 Degree Phase Shift Range
- 1.5 Degree Phase Deviation
- 0.3 dB Insertion Loss Deviation
- 0–12 V Control Voltage Range
- Specified 33 dBm IP3
- Small Footprint LGA Package



Description

The PS094-315 is a voltage controlled phase shifter specifically designed for use in power amplifier distortion compensation circuits centered at 942.5 MHz in GSM band base stations. Its characteristics are specified in a 35 MHz bandwidth. The PS094-315 employs a monolithic quadrature hybrid and a pair of selected silicon varactor diodes to achieve 100 degree phase shift and low insertion loss. The PS094-315 is packaged in the small outline LGA (Land Grid Array) surface mount package with the internal elements affixed to an organic BT substrate.

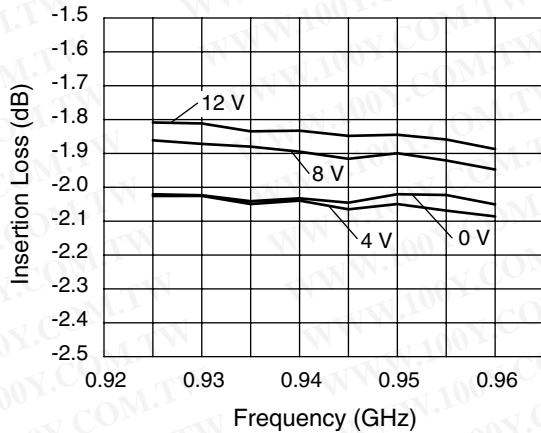
勝特力材料 886-3-5753170
 勝特力电子(上海) 86-21-54151736
 勝特力电子(深圳) 86-755-83298787
[Http://www.100y.com.tw](http://www.100y.com.tw)

Electrical Specifications at 25°C

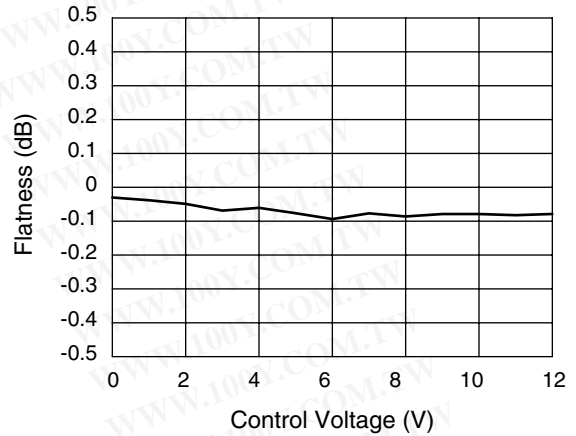
Parameter	Condition	Min.	Typ.	Max.	Unit
Frequency Range (BW)	$F_O = 942.5$	925		960	MHz
Phase Shift	At F_O , $C_V = 12$ V	100			Deg.
Phase Deviation in BW	$C_V = 0-12$ V		1.5	2.0	Deg.
Control Voltage (C_V) Range		0		12	V
Control Current	$C_V = 12$ V			1	μA
Insertion Loss in BW	$C_V = 0$ V			2.3	dB
I.L. Deviation in BW	$C_V = 0-12$ V			0.3	dB
I.L. Variation	At F_O , $C_V = 0-12$ V			0.75	dB
VSWR in BW				1.8	
IM3	$P_{IN} = 8$ dBm, 900/905 MHz, $C_V = 0$ V			-50	dBc
IP3	Derived from IM3	33			dBm

勝特力材料 886-3-5753170
 勝特力电子(上海) 86-21-54151736
 勝特力电子(深圳) 86-755-83298787
[Http://www.100y.com.tw](http://www.100y.com.tw)

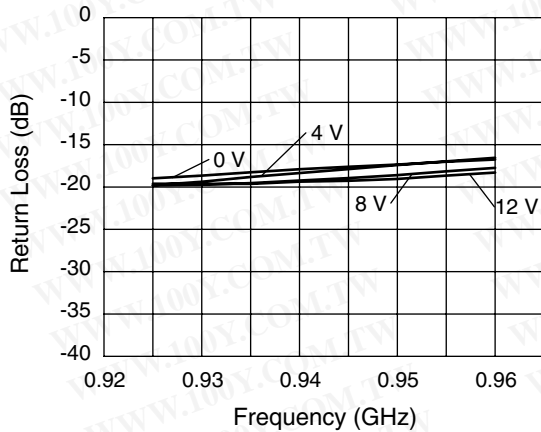
Typical Performance Data



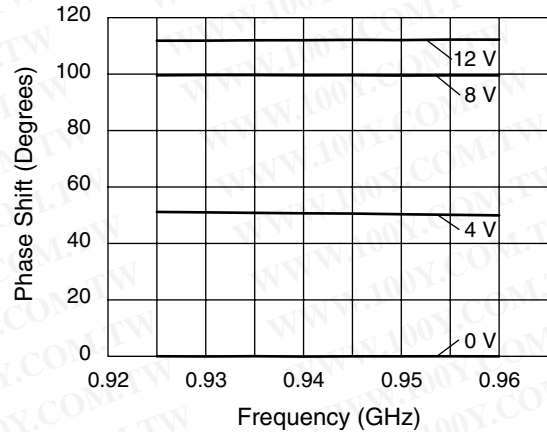
Insertion Loss vs. Frequency and Control Voltage



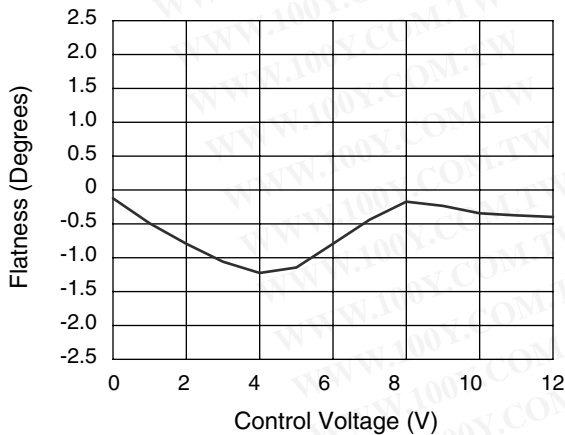
Insertion Loss Flatness vs. Control Voltage



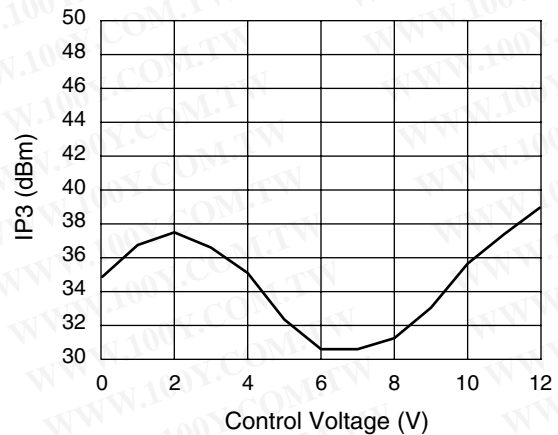
Input/Output Return Loss vs. Frequency and Control Voltage



Phase vs. Frequency and Control Voltage

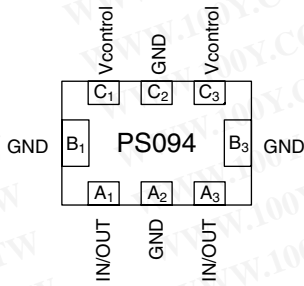


Phase Flatness vs. Control Voltage



IP3 vs. Control Voltage
RF₁ = 0.900 GHz, RF₂ = 0.905 GHz @ 8 dBm

Pin Out (Bottom View)

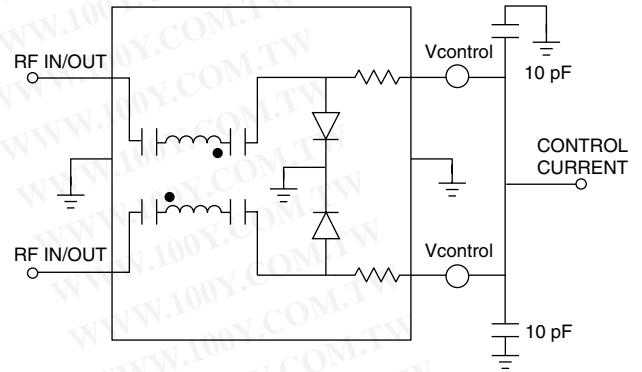


Terminal No.	Terminal Name
A ₁	IN/OUT
A ₂	GND
A ₃	IN/OUT
B ₁	GND
B ₃	GND
C ₁	Vcontrol
C ₂	GND
C ₃	Vcontrol

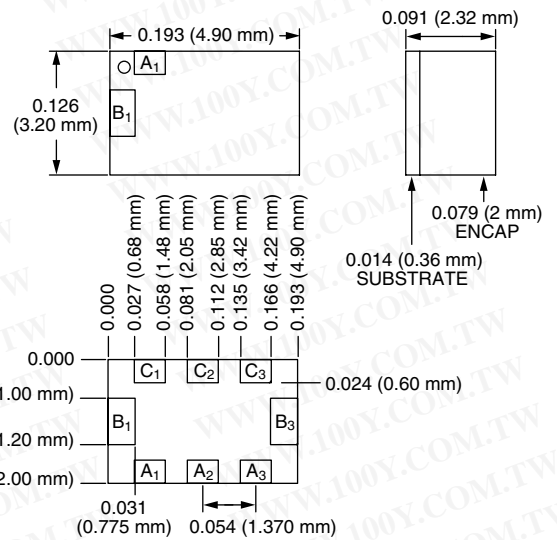
Absolute Maximum Ratings

Characteristic	Value
RF Input Power	20 dBm
Control Voltage	15 V
Operating Temperature	-40 to +85°C
Storage Temperature	-40 to +85°C

Connection Diagram



-315



勝特力材料 886-3-5753170
 勝特力电子(上海) 86-21-54151736
 勝特力电子(深圳) 86-755-83298787
 Http://www.100y.com.tw