

# Inductive proximity sensors

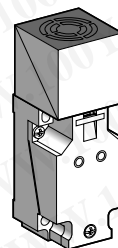
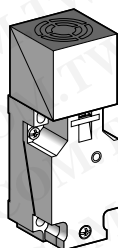
OsiSense XS, general purpose

Plastic case, 40 x 40 x 117 format, plug-in

5 position turret head

DC supply

Sensor	Flush mountable in metal	Non flush mountable in metal
--------	--------------------------	------------------------------



勝特力材料 886-3-5753170  
勝特力电子(上海) 86-21-34970699  
勝特力电子(深圳) 86-755-83298787  
[Http://www.100y.com.tw](http://www.100y.com.tw)

Nominal sensing distance (Sn)	15 mm	Increased range 20 mm	15 mm	20 mm	Increased range 40 mm	20 mm
-------------------------------	-------	--------------------------	-------	-------	--------------------------	-------

## References

4-wire $\overline{\text{---}}$ (complementary outputs)	PNP NO + NC	XS7 C40PC440	XS7 C40PC449	—	XS8 C40PC440	XS8 C40PC449	—
	NPN NO + NC	XS7 C40NC440	XS7 C40NC449	—	XS8 C40NC440	XS8 C40NC449	—
2-wire $\overline{\text{---}}$ (non polarised)	NO	—	—	XS7 C40DA210	—	—	XS8 C40DA210
	NO or NC programmable	—	—	XS7 C40DP210	—	—	XS8 C40DP210
Weight (kg)	0.220	0.220	0.220	0.220	0.220	0.220	0.220

## Characteristics

Product certifications		UL, CSA, CE					
Degree of protection conforming to IEC 60529		IP 67					
Operating temperature		- 25...+ 70 °C					
Connection		Screw terminals, clamping capacity: 2 or 4 x 1.5 mm² (1)					
Operating zone		0...12 mm	0...16 mm	0...12 mm	0...16 mm	0...32 mm	0...16 mm
Repeat accuracy		≤ 3% of effective sensing distance (Sr)					
Differential travel		3...20% of effective sensing distance (Sr)					
Status indication	Output	Yellow LED		Yellow LED	Yellow LED		Yellow LED
	Supply on	Green LED		–	Green LED		–
Rated supply voltage		⎓ 12...48 V with protection against reverse polarity					
Voltage limits (including ripple)		⎓ 10...58 V					
Current consumption, no-load		≤ 10 mA		–	≤ 10 mA		–
Switching capacity		0...200 mA		1.5...100 mA	0...200 mA		1.5...100 mA
		With overload and short-circuit protection					
Residual current, open state		–		≤ 0.5 mA	–		≤ 0.5 mA
Voltage drop, closed state		≤ 2 V		≤ 4 V	≤ 2 V		≤ 4 V
Maximum switching frequency		1000 Hz		1500 Hz	1000 Hz	500 Hz	800 Hz
Delays	First-up	≤ 5 ms		≤ 5 ms	≤ 5 ms	≤ 5 ms	≤ 5 ms
	Response	≤ 0.3 ms		≤ 2 ms	≤ 0.3 ms	< 1 ms	≤ 2 ms
	Recovery	≤ 0.7 ms		≤ 5 ms	≤ 0.7 ms	< 1 ms	≤ 7 ms

(1) Cable gland not included with sensor. For suitable 13P cable gland (XSZ PE13), see page 37317-EN/2.

# Inductive proximity sensors

OsiSense XS, general purpose

Plastic case, 40 x 40 x 117 format, plug-in

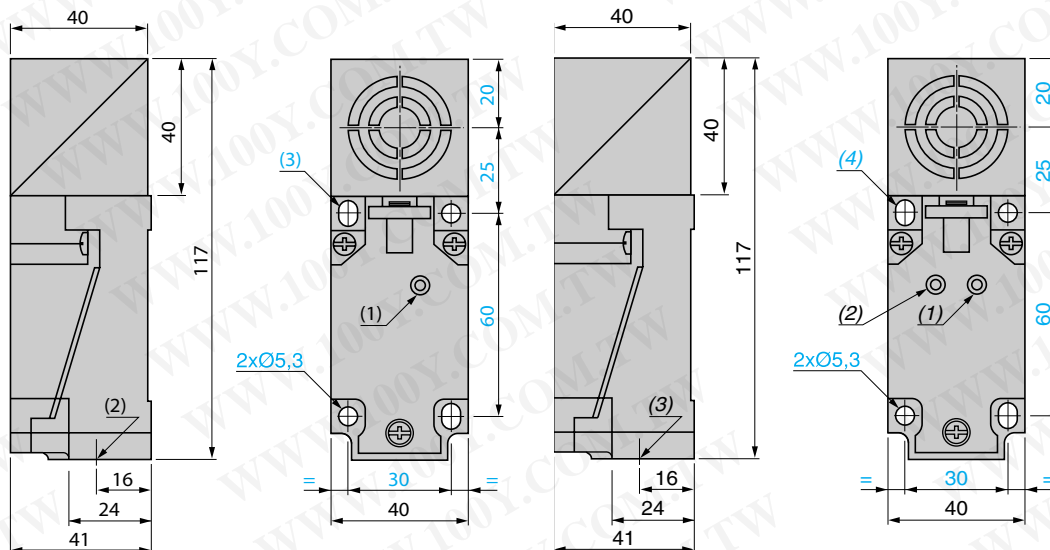
5 position turret head

DC supply

## Dimensions

XS7 C40D●210, XS8 C40D●210

XS7 C40●C44●, XS8 C40●C44●

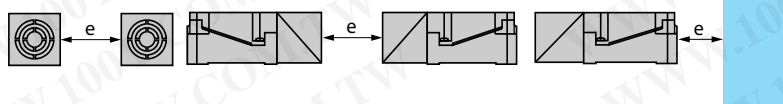


- (1) Output LED.  
(2) 1 tapped entry for 13P cable gland.  
(3) 2 elongated holes Ø 5.3 x 7.

- (1) Output LED.  
(2) Supply LED.  
(3) 1 tapped entry for 13P cable gland.  
(4) 2 elongated holes Ø 5.3 x 7.

## Setting-up

Minimum mounting distances (mm)



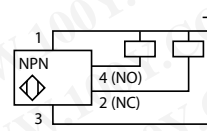
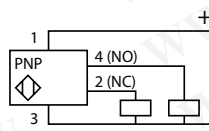
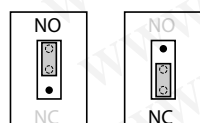
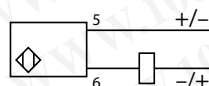
		Side by side	Face to face	Facing a metal object
Sensors flush mountable in metal	XS7	$e \geq 40$	$e \geq 120$	$e \geq 45$
	XS7 increased range model	$e \geq 80$	$e \geq 240$	$e \geq 60$
Sensors non flush mountable in metal	XS8	$e \geq 80$	$e \geq 160$	$e \geq 60$
	XS8 increased range model	$e \geq 160$	$e \geq 320$	$e \geq 120$

Tightening torque of cover fixing screws and clamp screws:  $< 1.2 \text{ N.m}$

## Wiring schemes

2-wire  $\dashv$  (non polarised), NO or NC output depending on position of link

4-wire  $\dashv$  , NO + NC output



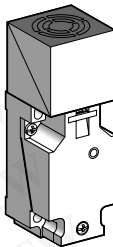
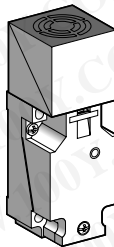
# Inductive proximity sensors

OsiSense XS, general purpose

Plastic case, 40 x 40 x 117 format, plug-in

5 position turret head

AC or DC supply

Sensor		Flush mountable in metal		Non flush mountable in metal	
					
		AC	AC/DC	AC	AC/DC
Nominal sensing distance (Sn)		15 mm		20 mm	
References					
2-wire ~	NO or NC programmable	XS7 C40FP260	–	XS8 C40FP260	–
2-wire ~ or ⎓ universal model	NO or NC programmable	–	XS7 C40MP230	–	XS8 C40MP230
Weight (kg)		0.220	0.220	0.220	0.220
Characteristics					
Product certifications		UL, CSA, CE			
Degree of protection conforming to IEC 60529		IP 67			
Operating temperature		- 25...+ 70 °C			
Connection		Screw terminals, clamping capacity 2 x 1.5 mm² (1)			
Operating zone		0...12 mm		0...16 mm	
Repeat accuracy		≤ 3% of effective sensing distance (Sr)			
Differential travel		3...20% of effective sensing distance (Sr)			
Output state indication		Yellow LED			
Rated supply voltage with protection against reverse polarity		~ 24...240 V, 50/60 Hz	~ 24...240 V, 50/60 Hz or ⎓ 24...210 V	~ 24...240 V, 50/60 Hz	~ 24...240 V, 50/60 Hz or ⎓ 24...210 V
Voltage limits (including ripple)		~ 20...264 V	~ or ⎓ 20...264 V	~ 20...264 V	~ or ⎓ 20...264 V
Current consumption, no-load		–			
Switching capacity		5...500 mA (2) (2 A inrush)	~ 5...300 mA or ⎓ 5...200 mA (2)	5...500 mA (2) (2 A inrush)	~ 5...300 mA or ⎓ 5...200 mA (2)
Residual current, open state		≤ 1.5 mA	0.8 mA on 24 V 1.5 mA on 120 V	≤ 1.5 mA	0.8 mA on 24 V 1.5 mA on 120 V
Voltage drop, closed state		≤ 5.5 V			
Maximum switching frequency		25 Hz	~ 25 Hz, ⎓ 50 Hz	25 Hz	~ 25 Hz, ⎓ 50 Hz
Delays	First-up	≤ 120 ms			
	Response	≤ 30 ms			
	Recovery	≤ 20 ms			

(1) Cable gland not included with sensor. For suitable 13P cable gland (XSZ PE13), see page 37317-EN/2.

(2) These sensors do not incorporate overload or short-circuit protection and therefore, it is essential to connect a "quick-blow" fuse in series with the load, see page 37317-EN/2.

# Inductive proximity sensors

OsiSense XS, general purpose

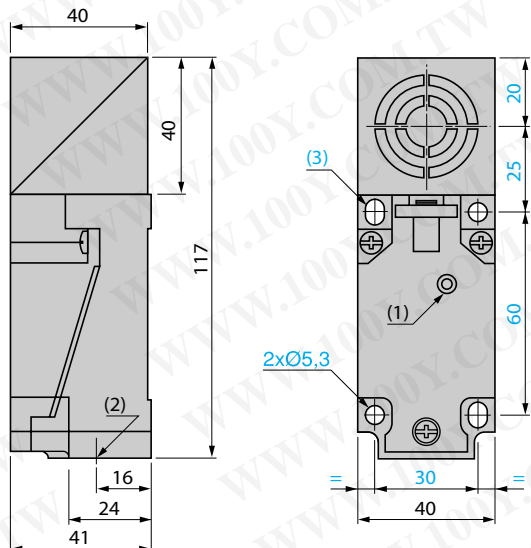
Plastic case, 40 x 40 x 117 format, plug-in

5 position turret head

AC or DC supply

## Dimensions

XS7 C40FP260, XS7 C40MP230, XS8 C40FP260, XS8 C40MP230



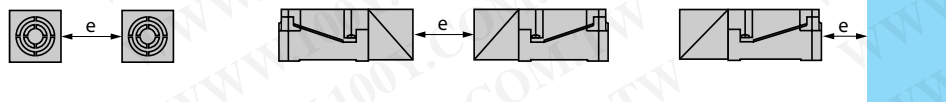
(1) Output LED.

(2) 1 tapped entry for 13P cable gland.

(3) 2 elongated holes Ø 5.3 x 7.

## Setting-up

Minimum mounting distances (mm)



	Side by side	Face to face	Facing a metal object
XS7 flush mountable	$e \geq 40$	$e \geq 120$	$e \geq 45$
XS8 non flush mountable	$e \geq 80$	$e \geq 160$	$e \geq 60$

Tightening torque of cover fixing screws and clamp screws:  $< 1.2 \text{ N.m}$

## Wiring schemes

2-wire ~ programmable, NO or NC output depending on position of link

2-wire ~ or 2-wire DC programmable, NO or NC output depending on position of link

