

HAKKO 937 ESD SAFE



- Digital indicator ensures accurate temperature setting by all personnel.
- Once set, temperature cannot be changed without inserting the control card, providing easy temperature management.
- Compact unit takes up little space on the workbench.
- Thinner grip for easier use.
- ESD safe by design.

Irons for Soldering Stations

3 Types of iron available: for HAKKO 937 Soldering Stations

Type	Small: For micro soldering	Medium: Standard	Large: For heavy duty soldering
Model No.	900S-ESD	907-ESD	908-ESD
Thermal recovery graph*			

* Test criteria
Board: Paper phenol copper
Solder: $\phi 1.6 \times 5\text{mm}$
Cycle: Every 3 sec.

Specifications

Model No.	937		
Power Consumption	60W		
Station			
Output Voltage	AC 24V		
Temperature Range	200-480°C		
Dimensions	120(W) x 93(H) x 170(D)mm		
Weight (w/o cord)	1.3kg		
Iron			
Model No.	900S	907	908
Type	S	M	L
Style	Regular ESD	Regular ESD	Regular ESD
Power Consumption	50W (24V)		
Standard Tip	900S-T-I	900M-T-B	900L-T-B
Tip to Ground Resistance	< 2 Ω		
Tip to Ground Potential	< 2mV (Typ.0.6mV)		
Heating Element	Ceramic Heater		
Total Length (w/o cord)	176mm	190mm	200mm
Weight (w/o cord)	25g	44g	54g

Packing List

Model Name	Contents
HAKKO 937	Station.....1
	Iron (900S/907/908)1
	Iron holder with cleaning sponge (900S-No.C1141, 907/908-No.C1142)1
	Control card.....1

When ordering or HAKKO 937, please specify the type of Iron (S, M or L).

Replacement Tips

Please refer to page 25.

Optional Parts

Please refer to page 27, 59.

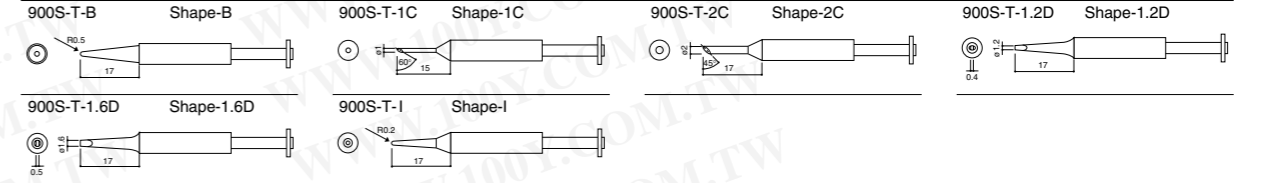


Stackable design puts two units in the bench space of one unit.

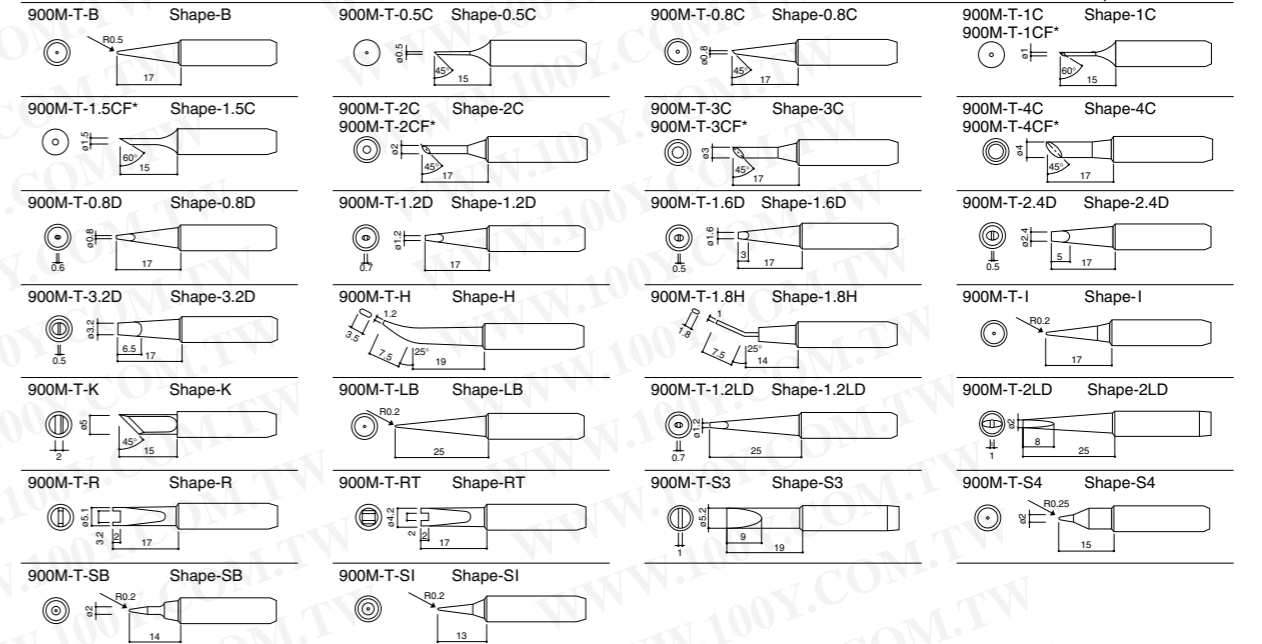
Replacement Tips

Unit : mm

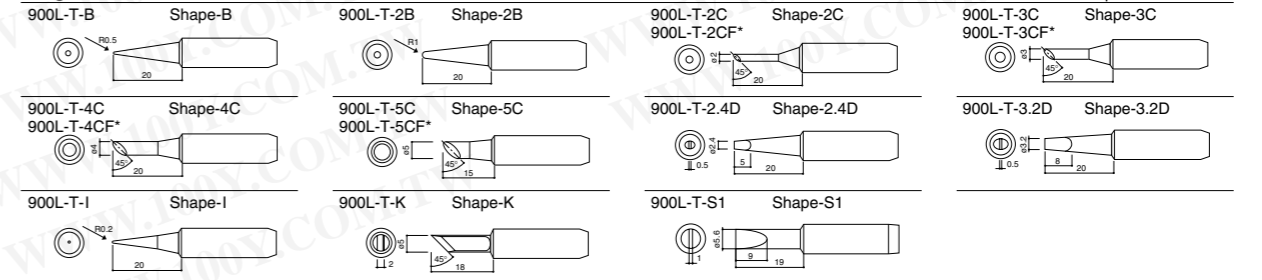
Small For 900S, 900S-ESD



Medium For 900M, 900M-ESD, 907, 907-ESD, 933

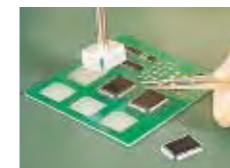


Large For 900L, 900L-ESD, 908, 908-ESD, 934



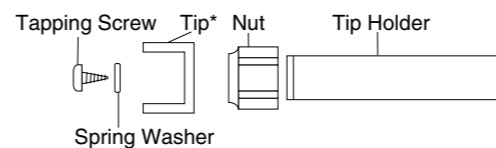
* These tips are fitted on the soldering surface only.

For SMD Desoldering



	907	907 ESD	900M	900M ESD
	+			
	Tip Holder (No.900M-1000)			
	+			
	Tip			

No.900M-1000

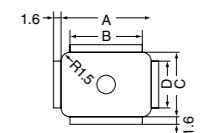


* Tip is not included.

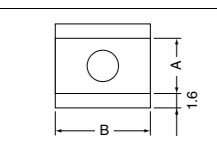
Optional Tips

Unit : mm

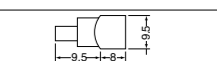
Part No.	Tip Size			
	A	B	C	D
924-T-1002	12.5	9.5	12.5	9.5
924-T-1003	15.5	12.5	15.5	12.5
924-T-1004	16.3	13.3	16.3	13.3
924-T-1005	17.0	14.0	17.0	14.0
924-T-1006	23.0	20.0	17.0	14.0
924-T-1007	20.0	17.0	20.0	17.0



Part No.	Tip Size	
	A	B
924-T-1010	6.0	5.0
924-T-1011	6.0	10.0
924-T-1012	7.0	12.5
924-T-1013	9.0	15.2
924-T-1014	9.0	18.0



Part No.	Type
924-T-1020	Spatula 9.5



勝特力材料 886-3-5753170
 勝特力电子(上海) 86-21-34970699
 勝特力电子(深圳) 86-755-83298787
[Http://www.100y.com.tw](http://www.100y.com.tw)