

Features

- Our best size/ performance series with broad applications in industrial controls.
- Widest safety agency approvals
- High peak pulse withstand capability

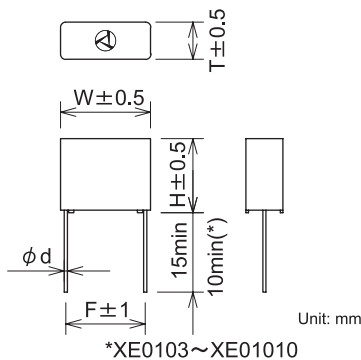
Applications

- Suppressing noise occurring world wide Automatic machines and Office appliances.

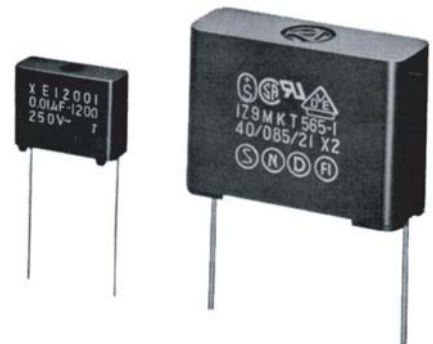
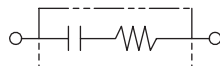


Safety Agency : Standard	File No.
UL : UL-1414	E47474
CSA : CSA C22.2 No.0, No.1	LR37404, LR68886
VDE : IEC60384-14 II , EN132400	126833, 126432
SEV : "	Nr.99.5 50354,01
SEMKO : "	9805093/01, 9821094/01
NEMKO : "	P98101548, P98101872
FIMKO : "	FI 11185
DEMKO : "	307778, 307865

Dimensions



Circuit



Electrical Specifications

Rated Voltage **250VAC**

Safety Agency	Class	Model Number	Capacitance $\mu\text{F} \pm 20\%$	Resistance $\Omega \pm 30\%$	Dimensions					Pulse condition (Max.)				Peak Pulse Voltage	Test Voltage	Insulation Resistance
					W	H	T	F	d	Peak to peak	Pulse width Max.	Repetitive frequency	Pulse width (sec) x Frequency (Hz) max.			
	X2	XE01001	0.01	10(1/4W)	17.0	14.0	7.0			800V max.	50msec max.	120Hz max.	4.5	1200V max.	Line to Line 1250Vrms 50/60Hz 60sec	Line to Line 15,000M Ω min. (500VDC) except XE0105 0475, 01010 5000M Ω min. (500VDC)
		XE04701		47(1/4W)									3.0			
		XE12001		120(1/4W)									1.5			
		XE22001		220(1/4W)									0.8			
		XE47001		470(1/4W)									0.45			
		XE010033	0.033	10(1/4W)	17.5	15.0	8.0		0.6 ± 0.05				3.0			
		XE047033		47(1/4W)									2.0			
		XE120033		120(1/4W)									1.0			
		XE220033		220(1/4W)									0.5			
		XE470033		470(1/4W)									0.25			
	XE0101	0.1	10(1/2W)	23.5	17.5	8.5	20.0	0.8 ± 0.07	1.5							
	XE0471		47(1/2W)						1.0							
	XE1201		120(1/2W)						0.45							
	XE2201		220(1/2W)						0.2							
	XE4701		470(1/2W)						0.1							
	XE0102	0.2	10(1/2W)	30.0	20.0	11.0	27.5	0.8 ± 0.07	0.5							
	XE0472		47(1/2W)						0.3							
	XE1202		120(1/2W)						0.15							
	XE2202		220(1/2W)						0.08							
	XE0103		0.3						10(1W)	40.0	28.0	16.0	36.5	1.0 ± 0.10	0.2	
XE0473	47(1W)	0.1														
XE1203	120(1W)	0.05														
XE2203	220(1W)	0.02														
XE0105	0.5	10(1W)							0.18							
XE0475	0.5	47(1W)						0.05								
XE01010	1.0	10(1W)	47.0	33.5	22.0	43.5			0.15			Line to Case 2000Vrms 50/60Hz 60sec	Line to Case 100,000M Ω min. (500VDC)			

Operating Temperature: -40~+100°C