



Industrial



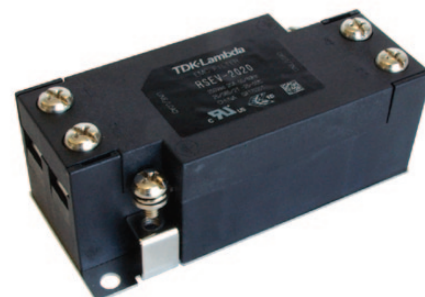
Test



Comm

6A to 30A, 250VAC EMC Filters

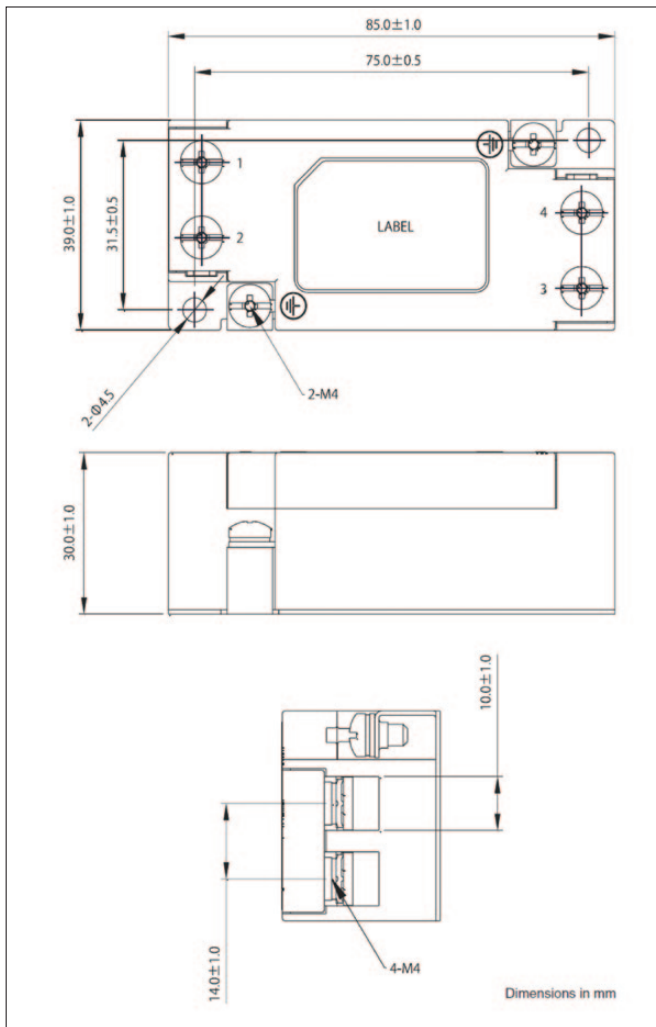
Features	Benefits
• Integrated Terminal Block with Captive Screws	• No Lost Hardware
• Compact Size	• Less System Space Required
• DIN Rail Mount Accessory Kit	• Allows DIN Rail Mounting
• Conforms to UL, CSA and EN Safety Agency Certifications	• Global Use



Specification						
Model		RSEV-2006	RSEV-2010	RSEV-2016	RSEV-2020	RSEV-2030
Rated Voltage (AC, DC)	V	250V				
Rated Current	A	6A	10A	16A	20A	30A
Withstand Voltage	V	Terminals to Case: 2500VAC (1 Minute)				
Isolation Resistance	MΩ	100MΩ minimum (500VDC, 1 Minute)				
Leakage Current (max)	A	1mA (250VAC, 60Hz)				
DC Resistance (total)	mΩ	110	40	20	10	6
Operating Temperature	°C	-25°C to +85°C (Derate above 55°C, see derating curve)				
Storage Temperature	°C	-25°C to +85°C				
Safety Agency Certifications	-	UL1283, CSA C22.2 No.8, EN60939-3				
Weight	g	150				
Size (W x L x H)	mm	39 x 85 x 30mm				
Warranty	yrs	5				

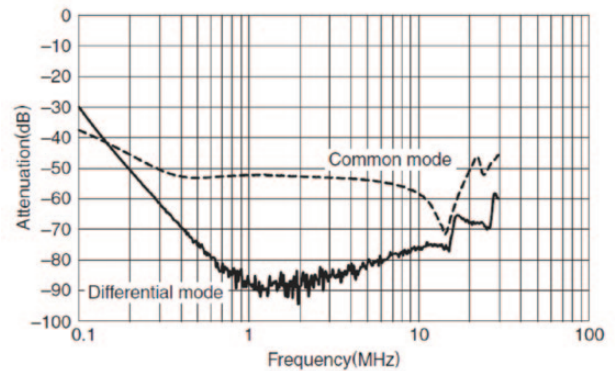
勝特力電材超市-龍山店 886-3-5773766
 勝特力電材超市-光復店 886-3-5729570
 勝特力电子(上海) 86-21-34970699
 勝特力电子(深圳) 86-755-83298787
<http://www.100y.com.tw>

Outline Drawing RSEV Series

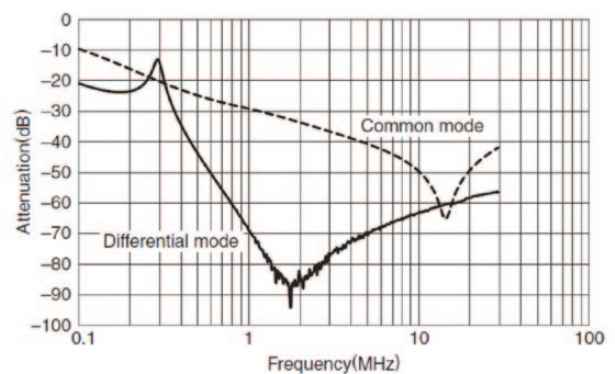


Attenuation Characteristics RSEV Series

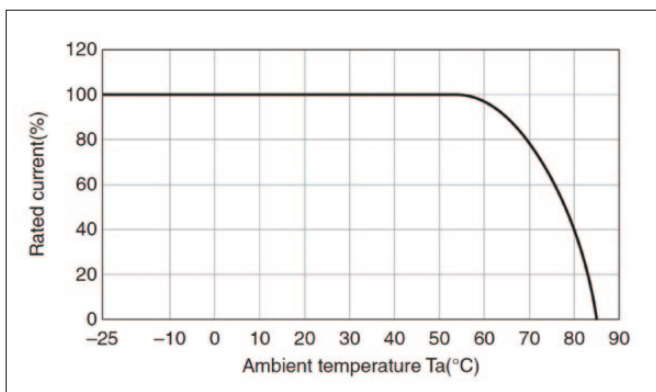
RSEV-2006



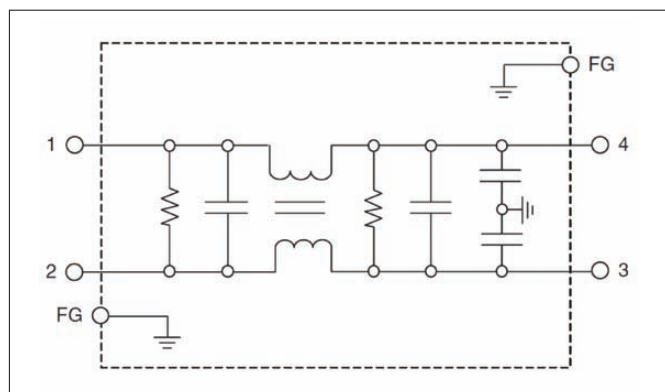
RSEV-2030



Derating Curve RSEV Series



Circuit Diagram RSEV Series



Accessory

DIN Rail Mounting Kit

DIN-RSEV

勝特力電材超市-龍山店 886-3-5773766
 勝特力電材超市-光復店 886-3-5729570
 勝特力電子(上海) 86-21-34970699
 勝特力電子(深圳) 86-755-83298787
<http://www.100y.com.tw>