

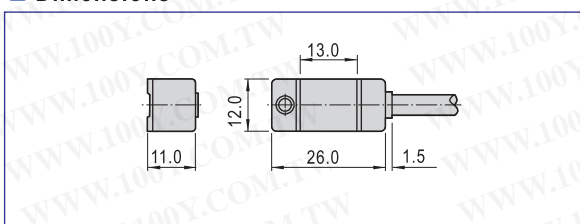
# Sensor switch

**AirTAC**

## CS1-U Series



### Dimensions



### The ordering code of mounting accessories

| Bore size\Series | SC,SCL  | SU,SUL   | SI,SIL   | JSI      |
|------------------|---------|----------|----------|----------|
| 32               | F-SC32H | F-SU32H  | F-SI32H  | F-JSI32H |
| 40               | F-SC32H | F-SU40H  | F-SI40H  | F-SI40H  |
| 50               | F-SC32H | F-SU50H  | F-SI50H  | F-SI50H  |
| 63               | F-SC63H | F-SU63H  | F-SI63H  | F-SI63H  |
| 80               | F-SC80H | F-SU80H  | F-SI80H  | F-SI80H  |
| 100              | F-SC80H | F-SU100H | F-SI100H | F-SI100H |
| 125              | -       | -        | F-SI125H | F-SI125H |
| 160              | -       | -        | F-SI160H | -        |
| 200              | -       | -        | F-SI200H | -        |

勝特力材料 886-3-5753170  
 勝特力电子(上海) 86-21-34970699  
 勝特力电子(深圳) 86-755-83298787  
[Http://www.100y.com.tw](http://www.100y.com.tw)

### Specification

| Item/Type                    | CS1-U  | CS1-UX |
|------------------------------|--|--------|
| Switch logic                 | STSP Normally opened type                        |        |
| Switch type                  | Reed switch with contact                         |        |
| Operating voltage(V)         | 5~240V AC/DC                                     |        |
| Max. Switching current(mA)   | 100  |        |
| Switching rating(W)          | Max. 10  |        |
| Current consumption          | No   |        |
| Voltage drop                 | 2.5V Max. @100mA DC                              |        |
| Cable                        | Φ 4.0,2C Gray oil resistant PVC (Flame retarded) |        |
| Indicator                    | Red LED  | No     |
| Leakage current              | No   |        |
| Sensitivity(Gauss)           | 60~75  |        |
| Max. Frequency(Hz)           | 200  |        |
| Shock(m/s <sup>2</sup> )     | 300  |        |
| Vibration(m/s <sup>2</sup> ) | 90   |        |
| Temperature range(°C) ①      | -10~70   |        |
| Enclosure classification     | IP67(NEMA6)                                      |        |
| Protection circuit           | No   |        |

① Note: Please contact us for high temperature resistant(125°C),low temperature resistant(-40~-25°C) and explosion-proof sensor switch.

### Ordering code

| CS1 U X 020             |  |
|-------------------------|--|
| Number of sensor switch | CS1: Sensor switch   |
| Specification           | Product Series   |
| U: U type               | SI/SU/SC/JSI/MI/MA50(63)   |
| Model of sensor switch  | Blank: two-line magnetic spring pipe with contact/normally opened<br>X: two-line magnetic spring pipe with contact, without indicator light/normally opened  |
| Connecting way ①        | C08: M8 quick joint, length of wire is 150mm<br>C12: M12 quick joint, length of wire is 150mm<br>020: length of wire is 2m<br>030: length of wire is 3m<br>050: length of wire is 5m<br>100: length of wire is 10m |

① Note: The quick joint that is attached at the end of wire is three-needle-male joint-linear-rotary screw thread type. The female joint plug has to be ordered additionally. Please refer to P442 for the specific data.

### Mounting

| Installation example                           | Installation method  |
|--|--|
| <p>Outline 1: Used with SU, SI, JSI series</p> | When the CS1-U, CS1-UX series sensor switch used with different cylinders, different mounting accessories must be ordered. the details are below.<br>1. When it used with MI, MA50, 63 series cylinders, you must order the band unit(the ordering code is GXPAB-01), then depend on the below outline 3, fixed the sensor switch on the proper position of the cylinder's body with the band unit.<br>2. When it used with SC series cylinders, you must order the Mounting bracket ( the ordering code is below table ) , then depend on the below outline 2, fixed the sensor switch on the proper position of the cylinder's body with the mounting bracket.<br>3. When it used with SU, SI, JSI cylinders, you must order the mounting bracket( the ordering code is below table), then depend on the below outline 1, fixed the sensor switch on the proper position of the cylinder's body with the mounting bracket. |
| <p>Outline 2: Used with SC series</p>          |  |
| <p>Outline 3: Used with MI, MA series</p>      |  |



Sensor switch