

Hour meters / timers, electromechanical

Timers, round design	With LED run indicator (AC+DC)	HR 47
----------------------	--------------------------------	-------



The hour meter HR 47 with run indicator feature a very high shock resistance.

These panel-mount counters for round panel cut-outs can be used in many different fields of application. These non-resettable counters are very robust and extremely tamper-proof.

Characteristics

- 7-digit hour meter
- For voltage ranges 10...80 V DC, 100...130 V AC and 187...264 V AC
- Magnified large figures
- Protection IP65 on the front and rear sides
- Suitable for any mounting position
- Without reset, and thus tamper-proof
- High shock and impact resistance

Benefits

- With run indicator (AC version), optional LED (DC version)
- For panel cut-out ø 50.5 mm with front panel dimensions ø 58 mm
- Simple and secure mounting with screwed clamping clip

Applications

General time measurement, construction machinery and industrial trucks, small appliances, UV lamps, display panels in vehicles, compressors, air-conditioning equipment, etc.

Type series

Description	Mounting	Type
Timer, round	Clamping clip fixing, screw-on	HR 47

Accessories	Dimensions in mm [inch]	Order-No.
Counter mounting fixture	For round counters with cut-out ø 53 [2.09"]	black N510199
Gasket, ø 58 [2.28"]	For cut-out ø 50 [1.97"]	black N511182
Adapter and anti-vibration set	For HR 47, ø 80 [3.15"] for cut-out ø 71 [2.80"]	black 255319

Suitable gaskets as well as further accessories can be found in the accessories section or in the accessories area of our website at: www.kuebler.com/accessories.

勝特力材料 886-3-5753170
 勝特力电子(上海) 86-21-34970699
 勝特力电子(深圳) 86-755-83298787
[Http://www.100y.com.tw](http://www.100y.com.tw)

Hour meters / timers, electromechanical

Timers, round design	With LED run indicator (AC+DC)	HR 47
----------------------	--------------------------------	-------

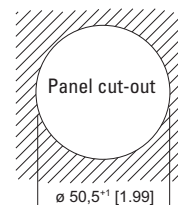
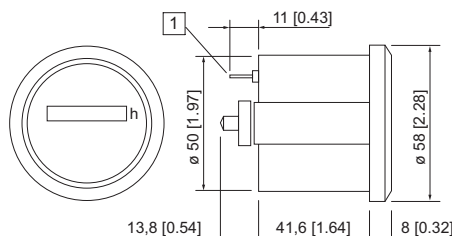
Technical data	
Electrical connection	screw terminal for flat pin 6.3 x 0.8 mm [0.25 x 0.031"]
Power consumption	10 ... 80 V DC max. 720 mW 100 ... 130 V AC, 60 Hz max. 1.1 VA 187 ... 264 V AC, 50 Hz approx. 1.2 VA
Rated voltages	AC (50 or 60 Hz) 100 ... 130/187 ... 264 V AC, DC 10 ... 80 V DC
On time	100 %
Number of digits	AC 7: 99999.99 h DC 7: 999999.9 h
Resolution	AC 0.01 h equals 36 s DC 0.1 h equals 6 min
Count mode	adding
Height of figures	4 mm [0.16"]
Colour of figures	hours white on black decimal position 50 Hz - red on black 60 Hz - red on white
Operating temperature	AC -25°C ... +80°C [-13°F ... +176°F] (non-condensing) DC -20°C ... +70°C [-4°F ... +158°F] (non-condensing)
Relative humidity	< 95% (non-condensing)
Counter reading on delivery	1,00 - 1,02

Mounting position	any
Protection	up to IP65, EN 60529 (except the connections)
Housing	plastic PC (Polycarbonate)
Accuracy	AC ± 0.02% DC ± 0.002%
Weight	approx. 50 g [1.76 oz]
Run indicator	AC fast rotating wheel in viewing window DC optional LED
Test voltage	2000 V AC, 50 Hz for AC version
EMC	Emitted interference EN 55011 class B Immunity to interference EN 61000-6-2
Device safety	Designed to EN 61010 part 1 Protection class 2 Application area Pollution level 2

Options	
Counter for ø 52 mm [0.20"] with screwed clamping bracket or screw thread on request	

Hour meters /
Timers

Timer, round
Type HR 47



1) Electrical connection

Front bezel thickness max. 6 [0.24] without having to shorten the clamping bracket

Type	Display	Voltage	Art.-No.	10 ... 80 V DC	100 ... 130 V 60 Hz	187 ... 264 V 50 Hz	
HR 47	6 digits	V AC, with run indicator V DC, without run indicator V DC, with run indicator	3.474.901.373 ¹⁾ 3.474.911.373 ¹⁾		3.474.901.084 ¹⁾	3.474.901.075 ¹⁾	further types on request

勝特力材料 886-3-5753170
 勝特力电子(上海) 86-21-34970699
 勝特力电子(深圳) 86-755-83298787
[Http://www.100y.com.tw](http://www.100y.com.tw)