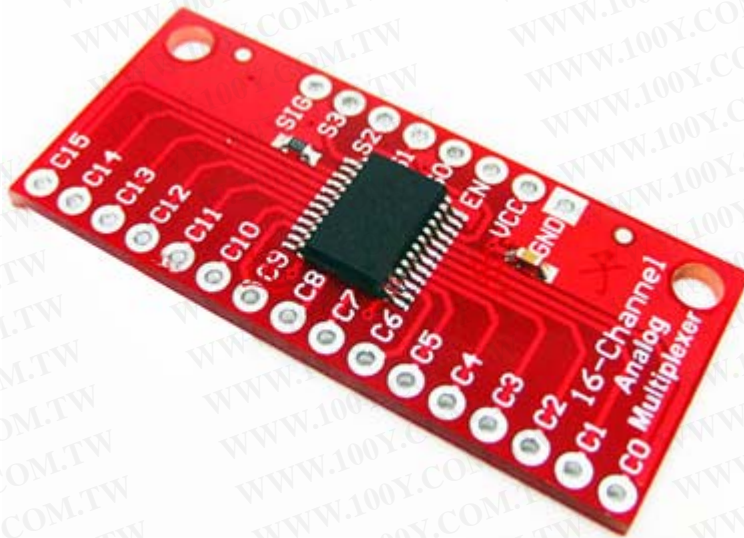


CJMCU-CD74HC4067

16 路模擬開關模塊 Analog/Digital MUX Breakout

勝特力材料 886-3-5753170
勝特力电子(上海) 86-21-34970699
勝特力电子(深圳) 86-755-83298787
[Http://www.100y.com.tw](http://www.100y.com.tw)



產品說明

CD74HC4067 高速 CMOS 16 通道模擬多路復用器 Analog/Digital 模擬數字 MUX 模塊
Arduino 16 路/16-channel 送排針。

這是一個 CD74HC4067 接口板。該芯片就像一個旋轉開關-它在內部航線的公共引腳 (COM 在原理圖中，SIG 在黑板上)，以 16 個通道引腳(CHANxx)之一。它適用於數字和模擬信號(高於 VCC 的電壓不能更高)，並且在任一方向連接的功能。要控制它，連接 4 個數字輸出芯片的地址選擇引腳(S0-S3)，並發送你想要的頻道的二進制地址(請參閱數據表的詳細信息)。這使您可以連接最多只用 5 針 16 傳感器系統！

由於復用/解復用也可與數字信號，你可以用它來管 TTL 電平的串行數據或從多個設備。例如可以用它來連接 16 台設備的 TX 引腳到一個 Rx 引腳微控制器。那麼你可以選擇這 16 個設備來聽任何一個。如果你想進行雙向通信，可以在二板添加路由微控制器的發射線 16 設備的接收線。通過使用多塊電路板，您可以創建用於 I2C，SPI 等類似安排內部開關接地和 VCC 之間的雙向，支持電壓，低“的”性和低“關”洩漏，並防止串擾，執行“先開後把”轉換。該主板還打破了該芯片的“使能”引腳，當其驅動為高電平，將徹底切斷公共引腳(所有開關“關閉”)。

Description: This is a breakout board for the very handy 16-Channel Analog/Digital Multiplexer/Demultiplexer CD74HC4067. This chip is like a rotary switch - it internally routes the common pin (COM in the schematic, SIG on the board) to one of 16 channel pins (CHANxx). It works with both digital and analog signals (the voltage can't be higher than VCC), and the connections function in either direction. To control it, connect 4 digital outputs to the chip's address select pins (S0-S3), and send it the binary address of the channel you want (see the datasheet for details). This allows you to connect up to 16 sensors to your system using only 5 pins!

Since the mux/demux also works with digital signals, you can use it to pipe TTL-level serial data to or from multiple devices. For example, you could use it to connect the TX pins of 16 devices to one RX pin on your microcontroller. You can then select any one of those 16 devices to listen to. If you want two-way communications, you can add a second board to route your microcontroller's TX line to 16 device's RX lines. By using multiple boards, you can create similar arrangements for I2C, SPI, etc.

The internal switches are bidirectional, support voltages between ground and VCC, have low "on" resistance and low "off" leakage, and to prevent crosstalk, perform "break-before-make" switching. The board also breaks out the chip's "enable" pin, which when driven high, will completely disconnect the common pin (all switches "off").

Features:

2V to 6V operation

"On" resistance: 70 Ohms @ 4.5V

6ns break-before-make @ 4.5V

Wide operating temperature range: -55C to 125C

勝特力材料 886-3-5753170
勝特力电子(上海) 86-21-34970699
勝特力电子(深圳) 86-755-83298787
[Http://www.100y.com.tw](http://www.100y.com.tw)