

# CENTER 310 SERIES HUMIDITY TEMPERATURE METER

勝特力材料 886-3-5753170  
勝特力电子(上海) 86-21-34970699  
勝特力电子(深圳) 86-755-83298787  
[Http://www.100y.com.tw](http://www.100y.com.tw)



Humidity Standard



CE

# CENTER®



# CENTER 310

- Triple Display
- Timer Function
- RS-232 Interface
- Auto Power Off
- HOLD Function
- MAX MIN Function
- Resolution 0.1°C 0.1°F



# CENTER 311

- Dual Input
- Triple Display
- RS-232 Interface
- Auto Power Off
- REL Function
- HOLD Function
- MAX MIN Function
- Resolution 0.1°C 0.1°F



## Specifications

### Range and Accuracy:

Temperature: -20°C~60°C....±0.7°C  
-4°F~140°F....±1.4°F

(K-Type): -200°C~1370°C...±0.3%rdg+1°C  
-328°F~2498°F...±0.3%rdg+2°F

• Humidity: 0~100%RH....±2.5%RH

• Input Protection: 60V DC or 24Vrms AC Maximum

• Operating Condition: 0°C to 40°C (<80%RH)

• Storage Condition: -10°C to 60°C (<70%RH)

• Battery Type: 9V,NEDA 1604, IEC 6F22, JIS 006P

• Dimension:

Meter: 186×64×30mm(7.3"×2.5"×1.2")  
Probe: 190mm L×15mm Dia(7.5"×0.6"Dia)

• Weight: Approx. 320g



# CENTER 313

- RS-232 Interface
- With Window Software
- 16,000 Records Data Logger
- Auto Power Off
- TIME Function
- HOLD Function
- MAX MIN Function
- Resolution 0.1°C 0.1°F



# CENTER 314

- Dual Input
- Triple Display
- RS-232 Interface
- With Window Software
- 16,000 Records Data Logger
- Auto Power Off
- TIME Function
- HOLD Function
- MAX MIN Function
- Resolution 0.1°C 0.1°F



**CENTER**

**HUMIDITY TEMPERATURE METER**

## Accessories

Model	CENTER 310	CENTER 311	CENTER 313	CENTER 314
Battery	●	●	●	●
Manual	●	●	●	●
Carrying case	●	●	●	●
K Type bead sensor		TP-K01		TP-K01
RS-232 Cable	Option	Option	●	●
Software	Option	Option	●	●
USB Cable	Option	Option	Option	Option



# CENTER 310 Series HUMIDITY TEMPERATURE METER

## CENTER 33%RH / 75%RH - Portable Humidity Calibration Cells



These humidity cell use formulated standard saturated salt solutions to produce predictable and stable humidity.

With this portable calibration set, the operator can perform calibration right at the location where calibration needed. It is easy to use and maintenance free.

- **Temperature Ratings:**

Accuracy:  $\pm 1\%$  at  $25^{\circ}\text{C}(77^{\circ}\text{F}) \pm 1^{\circ}\text{C}(2^{\circ}\text{F})$   
(assure good temperature stability during test)

- **Humidity Ratings:**

RH values: 32.8% and 75.3%  
(other value available upon request)

- **Dimension:**

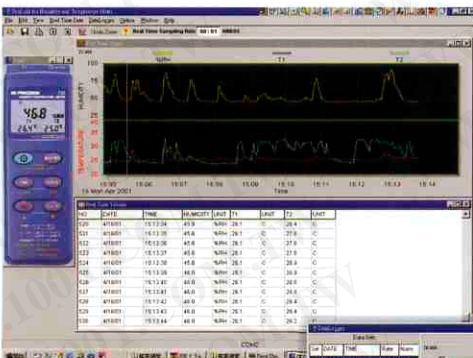
Single Cell: 39mm Dia  $\times$  83mm High (1.5" Dia  $\times$  3.3" High)  
Measuring port: 10mm(0.4") Diameter gland nut

### Standard Tripod Connector



## TestLink SE 310 - RS-232 Software For Window 95/98 NT4.0

Virtual Panel



Operate the instrument direct on your PC screen.

This friendly interface is identical to the tester it self and the user can operate it the same way they do with the tester.



Text and Graphic data presentation

The real time data and the recorded data can be down load to the PC and present in text table or graphic chart. These data can also be saved in excel compatible file for further analysis.

### Optional Accessories



**CENTER**<sup>®</sup>

**CENTER TECHNOLOGY CORP.**

4/F., NO.415, Jung-Jeng Rd., 238 Shu-Lin, Taipei, Taiwan  
TEL: 886-2-26763926 E-Mail: center@centertek.com  
FAX: 886-2-26763925 http://www.centertek.com

Distributed by: