

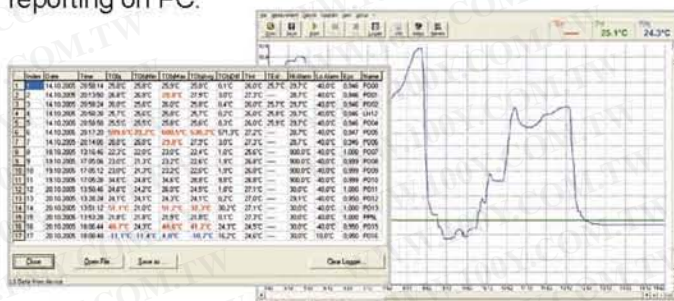
Smart infrared thermometers with USB interface and high precision optics



The optiris MS thermometers enable you to measure objects as small as 13 mm. Just spot the object, press the trigger and the infrared thermometers will show the temperature in an instant. Functions like MAX and MIN temperature results are shown in the display right away.

- Precision optics for accurate noncontact temperature measurement
- Temperature ranges from -32 up to 760°C
- Fast 0.3 second scanning of cold and hot spots
- Exact measurement of objects as small as 13 mm in any distance less than 140 mm
- Optical resolutions up to 40:1
- Laser sighting with narrow beam aiming for accurate readings
- Adjustable acoustic HIGH-/LOW-alarm with changing backlight colors
- USB interface, thermocouple input type K, OptrisConnect Report Software
- Extremely lightweight

**optris MSPro:** Data Logger and OptrisConnect Report Software support data storage, data processing and reporting on PC.



### Mechanical maintenance



Observe temperatures of motors and drives, bearings and valves. Gather temperature data of heating and ventilation components. Check furnace performance and steam distribution systems.

Infrared thermometers are proven time saving tools for predictive maintenance of electrical systems. Check out temperature problems safely with connectors, fuses, electric motors, motor windings, insulations, electrical wiring and electrical cabinets before damages occur.

Check temperatures of engines and catalytic converters, scan ignition system problems, analyse cooling system restrictions, diagnose air conditioning systems, check tyres and brakes with uneven braking.

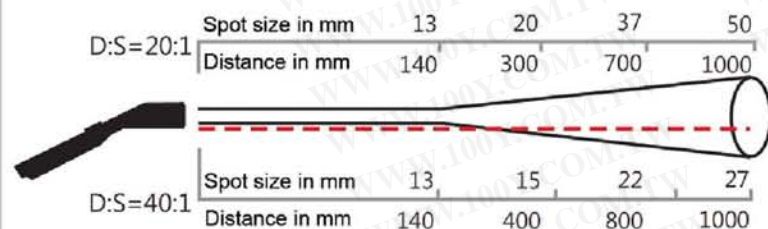


## Technical data

Base Model	MS	MS	MS
Type	-	Plus	Pro
			
Temperature ranges	-32°C to 420°C (-20°F to 788°F)	-32°C to 530°C (-20°F to 980°F)	-32°C to 760°C (-20°F to 1440°F)
System accuracy (at $T_{amb} = 23 \pm 5^\circ\text{C}$ )	± 1% or ± 1°C (20...420°C) ± 1.5°C (19.9...0°C) ± 2.5°C (-0.1...-20°C) ± 3°C (-20.1...-32°C)	± 1% or ± 1°C (20...530°C) ± 1.5°C (19.9...0°C) ± 2.5°C (-0.1...-20°C) ± 3°C (-20.1...-32°C)	± 1% or ± 1°C (20...760°C) ± 1.5°C (19.9...0°C) ± 2.5°C (-0.1...-20°C) ± 3°C (-20.1...-32°C)
Repeatability	± 0.5% or ± 0.7°C (20...420°C)	± 0.5% or ± 0.7°C (20...530°C)	± 0.75% or ± 0.75°C (20...760°C)
Optical resolution (D:S)	20:1, 13 mm spot size (D < 140 mm)	20:1, 13 mm spot size (D < 140 mm)	40:1, 13 mm spot size (D < 260 mm)
Resolution (display)	0.2°C (0.5°F)	0.1°C (0.1°F)	0.1°C (0.1°F)
Response time (95%)	300 ms	300 ms	300 ms
Ambient temperature	0°C to 50°C	0°C to 50°C	0°C to 50°C
Storage temperature	-20°C to 60°C without battery	-20°C to 60°C without battery	-20°C to 60°C without battery
Spectral range	8 - 14 µm	8 - 14 µm	8 - 14 µm
Emissivity	fixed: 0.95	0.100 – 1.100 adjustable	0.100 – 1.100 adjustable
Configurations	Min/Max/Hold/°C/°F	Min/Max/Hold/°C/°F/Offset	Min/Max/Hold/°C/°F/Offset
Alarm functions	-	Visual LCD alarm colors and acoustic HIGH-/LOW-alarm	Visual LCD alarm colors and acoustic HIGH-/LOW-alarm
PC Interface, Software, Thermocouple Input	USB interface	USB interface, OptrisConnect report software	USB interface, OptrisConnect report software, thermocouple element type K
Laser	<1 mW laser class IIa, laser beam with 9 mm offset	<1 mW laser class IIa, laser beam with 9 mm offset	<1 mW laser class IIa, laser beam with 9 mm offset
Weight/dimensions	150 g, 190 x 38 x 45 mm	150 g, 190 x 38 x 45 mm	180 g, 190 x 38 x 45 mm
Battery	9 V alkaline battery	9 V alkaline battery	9 V alkaline battery
Battery life	40 hours with laser and backlight off, 20 hours with laser and backlight on 50%	40 hours with laser and backlight off, 20 hours with laser and backlight on 50%	40 hours with laser and backlight off, 20 hours with laser and backlight on 50%
Relative humidity	10 – 95 % RH non condensing, at <30°C ambient temperature	10 – 95 % RH non condensing, at <30°C ambient temperature	10 – 95 % RH non condensing, at <30°C ambient temperature
Scope of Supply	9 V alkaline battery, operators manual	9 V alkaline battery, operators manual, wrist strap, pouch, protection boot, adapter for photo tripod, USB interface cable, OptrisConnect Report software	9 V alkaline battery, operators manual, wrist strap, pouch, protection boot, adapter for photo tripod, USB interface cable, OptrisConnect Report software, thermocouple insertion probe type K

## Optics and Display

### Distance-to-Spot-Ratio D:S



### Display (MS)

