

SOP

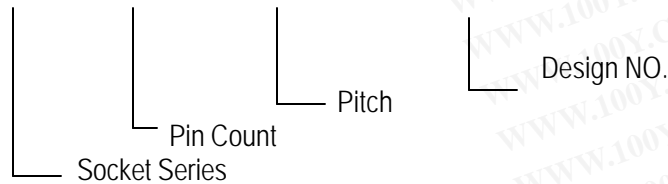
SMALL OUTLINE
PACKAGE

Applicable IC/SOP•SSOP

OPEN TOP TYPE SOCKETS

ORDERING PROCEDURE

OTS - () - () - ()



SPECIFICATIONS

Contact resistance: Initial 30mΩ or 50mΩ (At 10mA)

Maximum voltage: AC700V RMS (for 1 minute)

* Below 0.5mm Pitch
AC500V RMS (for 1 minute)

Insulation resistance: 1,000MΩ or higher (At DC 500V)

Rated current: 1A

Operating temperature range: -60°C ~ +150°C

Terminal strength against pulling: 0.5kg (1 minute)

Insertion: Min. 10,000 times (Mechanical)



MATERIAL

Body: PEI, PES

Contact: BeCu, Au plating (Ni-base)

PINCH CONTACT: Patent No. 1869849 (Japan) Patent No. 4691975 (U.S.A.)

勝特力材料 886-3-5753170
勝特力电子(上海) 86-21-34970699
勝特力电子(深圳) 86-755-83298787
[Http://www.100y.com.tw](http://www.100y.com.tw)

APPLICABLE IC DIMENSIONS & SOCKET DIMENSIONS

SOP (PINCH CONTACT)

Unit: mm (in)

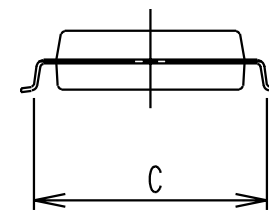
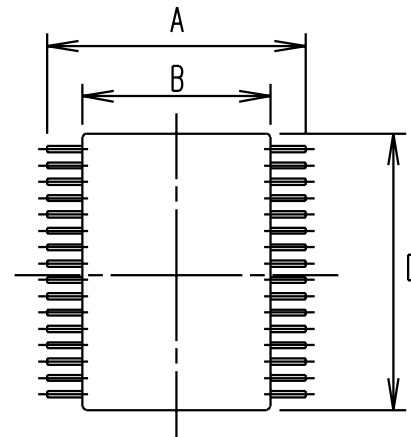
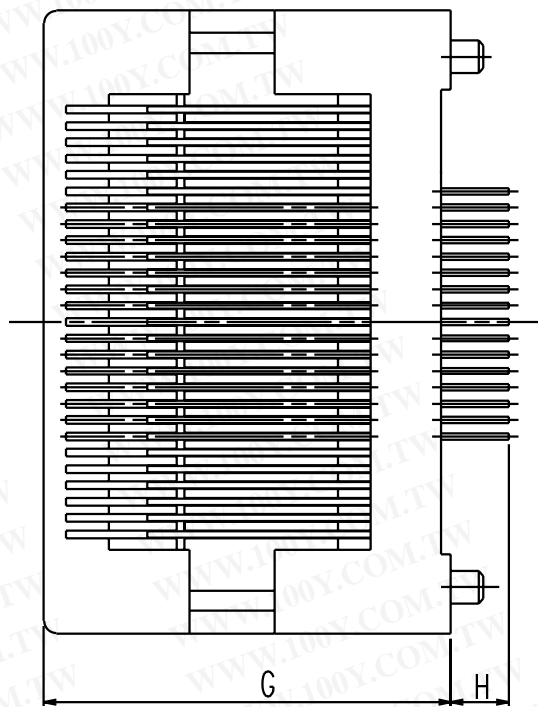
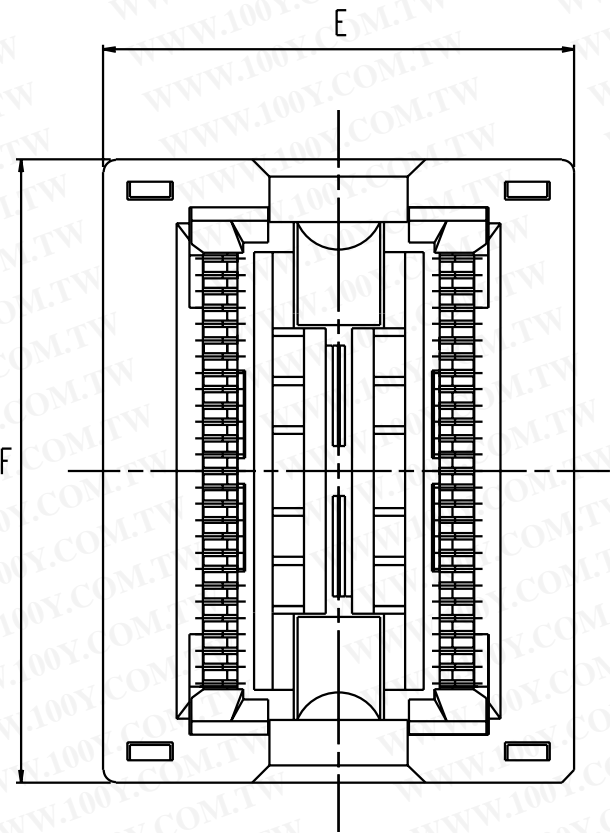
PART NO.	PIN COUNT	PITCH	ACTUATION FORCE	APPLICABLE IC DIMENSIONS (REF.)				OUTSIDE DIMENSIONS (REF.)				REMARKS
				A	B	C	D	E	F	G	H	
OTS-8(16)-1.27-03	8	1.27 (50mil)	max 0.9kg	6.0±0.2 (0.236)	3.9±0.1 (0.153)	5.0±0.2 (0.196)		20 (0.787)	18 (0.708)	17 (0.669)	2.5 (0.098)	150mil (with Adaptor)
OTS-14(16)-1.27-03	14	1.27 (50mil)	max 1.1kg	6.0±0.2 (0.236)	3.9±0.1 (0.153)	5.0±0.2 (0.196)		20 (0.787)	18 (0.708)	17 (0.669)	2.5 (0.098)	150mil (with Adaptor)
OTS-16-1.27-03	16	1.27 (50mil)	max 1.1kg	6.0±0.2 (0.236)	3.9±0.1 (0.153)	5.0±0.2 (0.196)		20 (0.787)	18 (0.708)	17 (0.669)	2.5 (0.098)	150mil
OTS-16-1.27-04	16	1.27 (50mil)	max 1.2kg	10.4±0.2 (0.409)	7.5±0.2 (0.295)	9.2±0.2 (0.362)		24 (0.945)	16.32 (0.642)	17 (0.669)	2.5 (0.098)	300mil
OTS-24-1.27-01	24	1.27 (50mil)	max 1.5kg	12.0±0.1 (0.472)	8.8±0.1 (0.346)	11.4±0.2 (0.448)		27 (1.062)	25 (0.984)	17 (0.669)	2.5 (0.098)	450mil
OTS-16(28)-1.27-04	16	1.27 (50mil)	max 1.2kg	10.4±0.2 (0.409)	7.5±0.2 (0.295)	9.2±0.2 (0.362)		25.4 (1.000)	25 (0.984)	17 (0.669)	2.5 (0.098)	300mil (with Adaptor)
OTS-18(28)-1.27-04	18	1.27 (50mil)	max 1.4kg	10.4±0.2 (0.409)	7.5±0.2 (0.295)	9.2±0.2 (0.362)		25.4 (1.000)	27 (1.062)	17 (0.669)	2.5 (0.098)	300mil (with Adaptor)
OTS-20(28)-1.27-04	20	1.27 (50mil)	max 1.4kg	10.4±0.2 (0.409)	7.5±0.2 (0.295)	9.2±0.2 (0.362)		25.4 (1.000)	27 (1.062)	17 (0.669)	2.5 (0.098)	300mil (with Adaptor)
OTS-24(28)-1.27-04	24	1.27 (50mil)	max 1.6kg	10.4±0.2 (0.409)	7.5±0.2 (0.295)	9.2±0.2 (0.362)		25.4 (1.000)	27 (1.062)	17 (0.669)	2.5 (0.098)	300mil (with Adaptor)
OTS-28-1.27-04	28	1.27 (50mil)	max 1.7kg	10.4±0.2 (0.409)	7.5±0.2 (0.295)	9.2±0.2 (0.362)		25.4 (1.000)	27 (1.062)	17 (0.669)	2.5 (0.098)	300mil (with Adaptor)
OTS-28-1.27-23	28	1.27 (50mil)	max 1.4kg	11.9±0.1 (0.468)	8.7 (0.342)	10.3 (0.406)		27 (1.062)	27 (1.062)	17 (0.669)	2.5 (0.098)	450mil

勝特力材料 886-3-5753170
 勝特力电子(上海) 86-21-34970699
 勝特力电子(深圳) 86-755-83298787
[Http://www.100y.com.tw](http://www.100y.com.tw)

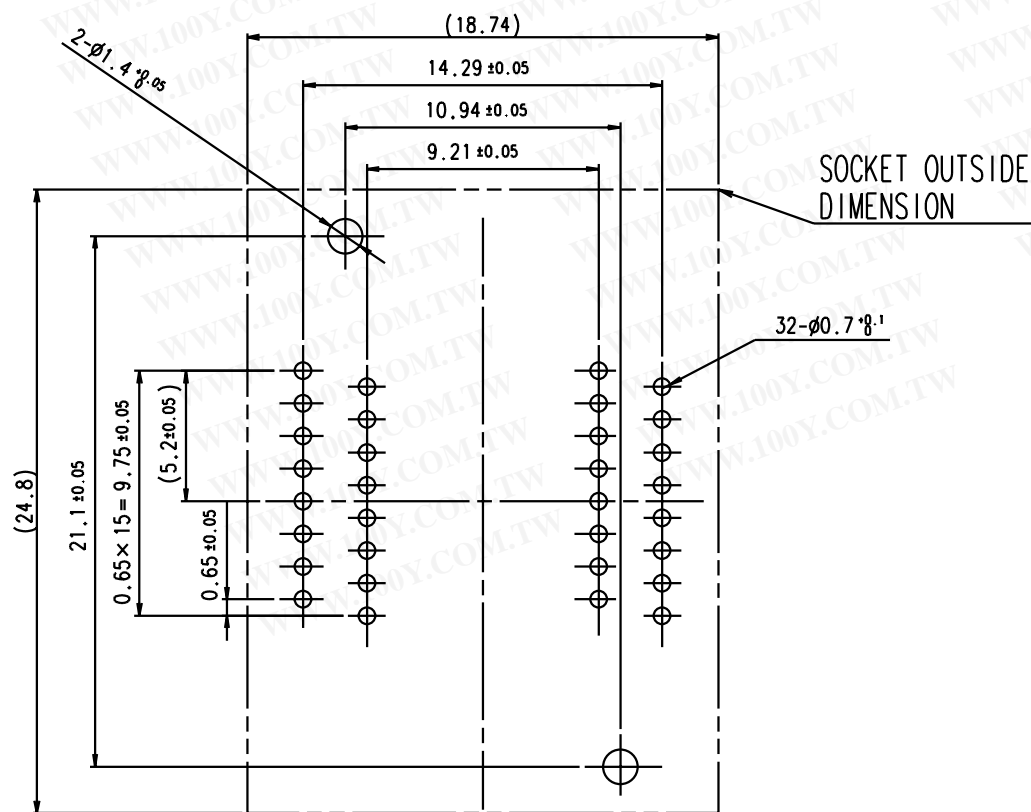
Unit: mm (in)

PART NO.	PIN COUNT	PITCH	ACTUATION FORCE	APPLICABLE IC DIMENSIONS (REF.)				OUTSIDE DIMENSIONS (REF.)				REMARKS
				A	B	C	D	E	F	G	H	
OTS-32-1.27-16	32	1.27 (50mil)	max 1.7kg	14.12±0.1 (0.556)	11.25 (0.443)	12.6 (0.496)		29 (1.141)	29 (1.141)	17 (0.669)	2.5 (0.098)	525mil
OTS-32-1.27-05	32	1.27 (50mil)	max 1.7kg	12.0±0.1 (0.472)	max9.53 (0.375)	max10.7 (0.421)		27 (1.062)	29 (1.141)	17 (0.669)	2.5 (0.098)	450mil
OTS-40-1.27-01	40	1.27 (50mil)	max 2.2kg	14.1±0.2 (0.556)	11.4±0.2 (0.448)	12.4±0.1 (0.488)		29 (1.141)	34 (1.338)	17 (0.669)	2.5 (0.098)	525mil
OTS-44-1.27-03	44	1.27 (50mil)	max 4.0kg	16.0±0.1 (0.629)	13.3±0.1 (0.523)	14.4 (0.566)		30.8 (1.212)	38 (1.496)	17 (0.669)	2.5 (0.098)	600mil
OTS-16(20)-1.27-01	16	1.27 (50mil)	max 1.0kg	7.9 (0.311)	5.4 (0.212)	6.9 (0.271)	max10.57 (0.415)	23.4 (0.921)	22 (0.866)	17 (0.669)	2.5 (0.098)	
OTS-16(20M)-1.27-01	16	1.27 (50mil)	max 1.0kg	7.9 (0.311)	5.4 (0.212)	6.9 (0.271)	max5.4 (0.212)	23.4 (0.921)	22 (0.866)	17 (0.669)	2.5 (0.098)	
OTS-14(20)-1.27-01	14	1.27 (50mil)	max 1.0kg	7.9 (0.311)	5.4 (0.212)	6.9 (0.271)	max9.3 (0.366)	23.4 (0.921)	22 (0.866)	17 (0.669)	2.5 (0.098)	
OTS-20-1.27-01	20	1.27 (50mil)	max 1.2kg	7.9 (0.311)	5.4 (0.212)	6.9 (0.271)	max13.1 (0.515)	23.4 (0.921)	22 (0.866)	17 (0.669)	2.5 (0.098)	

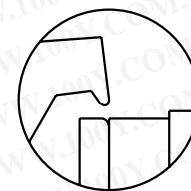
勝特力材料 886-3-5753170
 勝特力电子(上海) 86-21-34970699
 勝特力电子(深圳) 86-755-83298787
[Http://www.100y.com.tw](http://www.100y.com.tw)



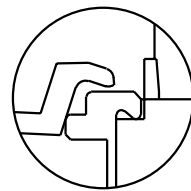
OTS-56-0.65
(REFERENCE ONLY)



OTS-56-0.65
(REFERENCE ONLY)



ONE POINT CONTACT
(REFERENCE ONLY)



PINCH CONTACT
(REFERENCE ONLY)

勝特力材料 886-3-5753170
 勝特力电子(上海) 86-21-34970699
 勝特力电子(深圳) 86-755-83298787
[Http://www.100y.com.tw](http://www.100y.com.tw)

(模組)轉接座規格表

PLCC PACKAGE			
編號	模組名稱	種類性質描述	支援機種
AA001	LP-PLCC-20-PAL20	1.20-pin PLCC socket 2.supports all 20-pin PLCC MPU/PLD 3.pin to pin for DIP socket	All
AA006	LP-PLCC-1M32	1.32-pin PLCC socket 2.supports all 32-pin PLCC E/EPROM/FLASH 3.pin to pin for 32-pin DIP socket	All
AA007	LP-PLCC-1M32S (SPRING TYPE)	1.32-pin PLCC socket 2.supports all 32-pin PLCC E/EPROM/FLASH 3.pin to pin for 32-pin DIP socket	All
AA401	LP48-PLCC-28PIN	1.28-pin PLCC socket 2.supports all 28-pin MPU/PLD/EPROM 3.pin to pin for 28-pin DIP socket	Leaper-48
AA402	LP48-PLCC-44PIN	1.44-pin PLCC socket 2.supports all 44-pin PLCC MPU/EPROM/FLASH 3.pin to pin for 44-pin DIP socket	Leaper-48
AA403	LP48-PLCC-44S (SPRING TYPE)	1.44-pin PLCC socket 2.supports all 44-pin PLCC MPU/EPROM/FLASH 3.pin to pin for 44-pin DIP socket	Leaper-48

SOP PACKAGE			
編號	模組名稱	種類性質描述	支援機種
AB002	LP-SOP8-207mil (SPRING TYPE)	1. 8-pin SOP socket 2. 207 mil 3. pin to pin for 8-pin DIP socket	All
AB004	LP-SOP-16PIN	1. 16-pin SOP socket 2. 150 mil 3. pin to pin for 8-pin ~16-pin DIP socket	All
AB005	LP-SOP-20PIN	1. 20-pin SOP 300mil socket 2. supports all 20-pin SOP MPU/PLD/EPROM 3. pin to pin for 20-pin DIP socket	All
AB007	LP-SOP-28PIN-A	1. 28-pin SOP 330mil socket 2. supports all 28-pin SOP MPU/EPROM/EEPROM 3. pin to pin for 20-pin ~ 28-pin DIP socket	All
AB008	LP-SOP-28PIN-B	1. 28-pin SOP 300mil socket 2. supports all 28-pin SOP MPU/EPROM/EEPROM 3. pin to pin for 20-pin ~ 28-pin DIP socket	All
AB009	LP-SOP-32PIN	1. 32-pin SOP 460mil socket 2. supports all 32-pin SOP SRAM/EPROM 3. pin to pin for 32-pin DIP socket	All
AB010	LP-SOP-40PIN	1. 40-pin SOP socket 2. supports all 40pin SOP MPU/EPROM/FLASH 3. pin to pin for 40-pin DIP socket	All
AB011	LP-SOP-44PIN	1. 44-pin SOP socket 2. pin to pin for 44-pin DIP socket	All

SSOP PACKAGE			
編號	模組名稱	種類性質描述	支援機種
AC001	LP-SSOP-16PIN	1. 16-pin SSOP socket 2. pin to pin for 16-pin DIP socket	All
AC002	LP-SSOP-28PIN	1. 28-pin SSOP socket 2. pin to pin for 28-pin DIP socket	All

(模組)轉接座規格表

AC503	LP-PST-SSOPP28	1. 28-pin 209mil SSOP socket 2. pin to pin for 28-pin DIP socket	All
-------	----------------	---	-----

TSOP PACKAGE			
編號	模組名稱	種類性質描述	支援機種
AE001	LP-TSOP-8PIN	1. 8-pin TSOP socket 2. for 8-pin DIP socket	All
AE002	LP-TSOP-28PIN	1. 28-pin TSOP socket 2. pin to pin for 28-pin DIP socket	All
AE401	LP48-TSOP-32S (SPRING TYPE)	1. 32-pin TSOP socket (8x22mm) 2. supports all 32-pin TSOP E/EPROM/FLASH 3. 32pin TSOP Memory to 32-pin DIP socket	Leaper-48
AE402	LP48-TSOP-40PIN	1. 40-pin TSOP socket 2. pin to pin for 40-pin DIP socket	Leaper-48
AE403	LP48-TSOP-48PIN	1. 48-pin TSOP socket 2. pin to pin for 48-pin DIP socket	Leaper-48
AE404	LP48-TSOP-40S (SPRING TYPE)	1. 40-pin TSOP socket 2. pin to pin for 40-pin DIP socket	Leaper-48
AE405	LP48-TSOP-48S (SPRING TYPE)	1. 48-pin TSOP socket 2. pin to pin for 48-pin DIP socket	Leaper-48
AE406	LP48-TSOP56-28F128JXC (SPRING TYPE)	1. 56-pin TSOP socket 2. Only for intel 28F128JXC	Leaper-48
AE408	LP48-TSOP-56M-R	1. 56-pin TSOP socket 2. Support AMD/MXIC/SPANSION/ST IC	Leaper-48

TSSOP PACKAGE			
編號	模組名稱	種類性質描述	支援機種
AK001	LP-TSSOP-8PIN	1. 8-pin TSSOP socket 2. pin to pin for 8-pin DIP socket	All
AK402	LP-TSSOP-20PIN	1. 20-pin TSSOP socket 2. pin to pin for 20-pin DIP socket	Leaper-48

VSOP PACKAGE			
編號	模組名稱	種類性質描述	支援機種
AV401	LP48-VSOP-32S (SPRING TYPE)	1. 32-pin VSOP socket (8x14mm) 2. supports all 32-pin VSOP E/EPROM/FLASH 3. 32pin VSOP Memory to 32-pin DIP socket	Leaper-48
AV402	LP48-VSOP-40PIN	1. 40-pin VSOP socket 2. pin to pin for 40-pin DIP socket	Leaper-48

PSOP PACKAGE			
編號	模組名稱	種類性質描述	支援機種
AG401	LP48-PSOP-44PIN	1. 44-pin PSOP socket 2. pin to pin for 44-pin DIP socket * Body Width=12.80mm ** Tip to Tip= Max 15.90mm *** Inside of flash Protion=14.70mm	Leaper-48
AG402	LP48-PSOP-44PIN(1536)	1. 44-pin PSOP socket 2. pin to pin for 44-pin DIP socket * Body Width=13.60mm ** Tip to Tip= Max 16.00mm *** Inside of flash Protion=14.70mm	Leaper-48

(模組)轉接座規格表

WSOP PACKAGE			
編號	模組名稱	種類性質描述	支援機種
AW401	LP48-WSOP-48PIN	1. 48-pin WSOP socket 2. pin to pin for 48-pin DIP socket	Leaper-48

WSON PACKAGE			
編號	模組名稱	種類性質描述	支援機種
AB401	LP48-WSON8-5×6	1. 8-pin WSON ; Body Size 5×6 socket 2. pin to pin for 8-pin DIP socket	Leaper-48
AB402	LP48-WSON8-6×8	1. 8-pin WSON ; Body Size 6×8 socket 2. pin to pin for 8-pin DIP socket	Leaper-48

QFP PACKAGE			
編號	模組名稱	種類性質描述	支援機種
AH401	LP48-QFP-44PIN	1.44PIN QFP socket 2.Body Size : 10x10mm 3.Pin Size : 13.5x13.5mm 4. pin to pin for 44-pin DIP socket	Leaper-48
AH402	LP48-QFP-44S (SPRING TYPE)	1. 44-pin QFP socket 2.Body Size : 10x10mm 3. Pin Size : 13.5x13.5mm 4. pin to pin for 44-pin DIP socket	Leaper-48
AH403	LP48-VQFP-44S (SPRING TYPE)	1. 44-pin VQFP socket 2. Body Size : 10x10 mm Pitch 0.8 3. Pin Size : 12x12mm 4. pin to pin for 44-pin DIP socket	Leaper-48

SDIP PACKAGE			
編號	模組名稱	種類性質描述	支援機種
AI402	LP48-SDIP-42PIN	1. 42-pin SDIP sockets 2. pin to pin for 42-pin DIP socket	Leaper-48

BGA PACKAGE			
編號	模組名稱	種類性質描述	支援機種
AU401	LP48-UBGA-48PIN (SPRING TYPE)	7x7mm (0.75mm Pitch 6x8 48B)	Leaper-48
AU403	LP48-UBGA1-48PIN	8x10mm (0.8mm Pitch 6x8 48B)	Leaper-48

勝特力材料 886-3-5753170
 勝特力电子(上海) 86-21-34970699
 勝特力电子(深圳) 86-755-83298787
[Http://www.100y.com.tw](http://www.100y.com.tw)