

# 199999/120000 COUNTS DUAL DISPLAY DIGITAL MULTIMETER



**GDM-8255A (199999 Counts)**

**GDM-8251A (120000 Counts)**



## FEATURES

- \* GDM-8255A : 199,999 Counts Display
- \* GDM-8251A : 120,000 Counts Display
- \* VFD Two Colors Display
- \* 0.012% DCV Accuracy
- \* True RMS (AC, AC+DC)
- \* 9 Major Measuring Functions and 10 Advanced Measurement Functions
- \* 2W/4W Resistance Measurement
- \* High Voltage 1000V and 10A Current Range
- \* Standard Interface : RS-232C, USB Device, Digital I/O
- \* Free PC Software (DMM-VIEWER), LabVIEW Driver
- \* Optional 16+2 Channels Scanner Card (GDM-SC1 for GDM-8255A only)

### GTL-117 Test Lead

For: GDM-8255A/8251A,  
GDM-8245/8246



### GTL-247 USB Cable

A-A type cable,  
Approx. 1.8m  
For: GDM-8255A/8251A



### GDM-01 Calibration key

For: GDM-8255A/8251A



The GDM-8255A/8251A portable precision multimeters feature 199,999/120,000 counts, a dual display, a 0.012% DCV accuracy and 2w/4w measurement. The VFD display technology provides the excellent observation of contrast and brightness.

The GDM-8255A/8251A carries an extensive list of standard measurement items with a dual-display allowing two measurement items to be displayed simultaneously. Advanced measurement functions, such as Max/Min, Hold, Relative value and Compare, are suitable for a multiplicity of applications such as production testing, research and field verification. The USB, RS-232C and 9-pin digital I/O interface are included as standard features for remote control and data capturing for ATE applications.

For convenient PC-based remote control and extensive data capture, the GDM-8255A/8251A includes DMM-Viewer software at no additional cost. DMM-Viewer mimics the operation of the multimeters on the PC, allowing you to quickly use the software with little effort.

The optional scanner card (GDM-SC1), creates a self-contained multipoint measurement solution with plug-in design. This approach eliminates the complexities of multipoint measurements and data processing. The scanner lets users effectively measure multiple channels connected to a single GDM-8255A. Each scanner card has 16 general purpose channels and 2 extra channels for current (ACI, DCI) measurements. All channels are fully isolated (Hi and Lo). Up to two scanner cards can be inserted into each multimeter for a maximum of 36 channels. These optional modules not only provide customers with a complete hands-free multiple measurement solution, but also provide a cost effect upgrade path compared to purchasing dedicated instruments. (OPTIONAL FOR GDM-8255A ONLY)

| SPECIFICATIONS             |  |                |
|----------------------------|--|----------------|
|                            | GDM-8255A  | GDM-8251A      |
| <b>FULL SCALE</b>          | 199,999 Counts   | 120,000 Counts |
| <b>SAMPLE RATE</b>         | Slow : 5 1/2 digits, 10 readings/second<br>Medium : 4 1/2 digits, 30 readings/second<br>Fast : 3 1/2 digits, 60 readings/second  |                |
| <b>DC VOLTAGE</b>          | Range Accuracy Input Impedance 100mV, 1V, 10V, 100V, 1000V 5 ranges ± (0.012% rdg + 5 digits) 10MΩ   |                |
| <b>AC VOLTAGE True RMS</b> | Range Accuracy 100mV, 1V, 10V, 100V, 750V 5 ranges 20Hz~45Hz :± (1% rdg + 100 digits)<br>45Hz ~ 10kHz :± (0.2% rdg + 100 digits)<br>10kHz ~ 30kHz :± (1% rdg + 100 digits)<br>30kHz~100kHz :± (3% rdg + 200 digits)<br>Input Impedance 1.1MΩ in parallel with approx. 100pF  |                |
| <b>DC CURRENT</b>          | Range Accuracy 10mA, 100mA, 1A, 10A 4 ranges 10mA, 100mA :± (0.05% rdg + 15 digits)<br>1A, 10A range :± (0.2% rdg + 5 digits)  |                |
| <b>AC CURRENT TRUE RMS</b> | Range Accuracy 10mA, 100mA, 1A, 10A 4 ranges 10mA, 100mA range : 20Hz ~ 50Hz :± (1.5% rdg + 100 digits)<br>50Hz ~ 10kHz :± (0.5% rdg + 100 digits)<br>10kHz~20kHz :± (2% rdg + 200 digits)<br>1A, 10A range : 50Hz ~ 10kHz :± (1% rdg + 100 digits)  |                |
| <b>RESISTANCE</b>          | Range 2W Accuracy 100Ω, 1kΩ, 10kΩ, 100kΩ, 1MΩ, 10MΩ, 100MΩ 7 ranges 100Ω range :± (0.1% rdg + 8digits) (*)<br>1kΩ range :± (0.08% rdg + 5 digits) (*)<br>10kΩ ~ 1MΩ 3 ranges :± (0.06% rdg + 5digits)<br>10MΩ range :± (0.3% rdg + 5 digits)<br>100MΩ range :± (3% rdg + 8 digits)<br>4W Accuracy 100Ω range :± (0.05% rdg + 8 digits) (*)<br>1kΩ ~ 1MΩ 4 ranges :±(0.05% rdg + 5 digits)<br>10MΩ range :± (0.3% rdg + 5 digits)<br>100MΩ range :± (3% rdg + 8 digits) |                |
| <b>DIODE TEST</b>          | Open Circuit Voltage 2.0V, Test Current 0.5mA  |                |
| <b>FREQUENCY</b>           | 10Hz~800kHz  |                |

勝特力材料 886-3-5753170  
 勝特力电子(上海) 86-21-34970699  
 勝特力电子(深圳) 86-755-83298787  
[Http://www.100y.com.tw](http://www.100y.com.tw)



**GDM-8255A**

**GDM-8251A Rear Panel**



**GDM-8255A Rear Panel**



| SPECIFICATIONS                                       |  |
|--|--|
| <b>CONTINUITY BEEPER</b>                             |  |
| 1 ~ 100Ω Define by user                              |  |
| <b>TEMPERATURE</b>                                   |  |
| 0 ℃ ~ 300 ℃ : J, K, T Type                           |  |
| <b>OTHER FUNCTIONS</b>                               |  |
| Auto range / Manual, Math : MX + B / % / 1/X         |  |
| Max, Min, dBm, dB, REL, Hold, Compare, Store, Recall |  |
| <b>DISPLAY</b>                                       |  |
| VFD, Two Colors Display                              |  |
| <b>INTERFACE</b>                                     |  |
| Digital I/O, USB, RS-232C                            |  |
| <b>POWER SOURCE</b>                                  |  |
| AC 100V~240V± 10%, 50/60Hz                           |  |
| <b>DIMENSIONS &amp; WEIGHT</b>                       |  |
| 265(W) x 107(H) x 350(D) mm, Approx. 2.6 kg          |  |
| NOTE : (*)USE "REL" Mode                             |  |

**ORDERING INFORMATION**

**GDM-8255A** 199,999 Counts Dual Display Digital Multimeter  
**GDM-8251A** 120,000 Counts Dual Display Digital Multimeter

ACCESSORIES :  
 Quick start user manual x 1, Power cord x 1, Test lead GTL-117 x 1, USB Cable GTL-247  
 CD x 1 (including complete user manual, upgrade program and PC software DMM Viewer),  
 Calibration key GDM-01 x 1 (Compatible with Fluke 5720A/5725A calibrators only)

**OPTION**

Opt.01 Scanner Card (GDM-SC1 for GDM-8255A only)

**OPTIONAL ACCESSORIES**

**GTL-108A** 4W Type test lead  
**GTL-232** RS232C Cable, 9-pin female to 9-pin, null modem for computer

**FREE DOWNLOAD**

**PC Software** DMM-VIEWER  
**Driver** USB Driver  
 LabVIEW Driver

**GDM-SC1 Scanner card**

Multipoint Testing can be facilitated by simple insertion of scanner card.  
 For: GDM-8255A



**GTL-108A 4W Type Test Lead**

For: GOM-801H/802, GDM-8255A/8251A



**GTL-232 RS-232C Cable**

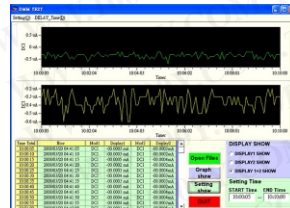
For: GDM-8255A/8251A



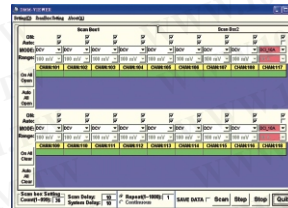
**DMM-Viewer PC Software**



General Control Mode



Reload-Data Graphic



Scanner Control Mode

勝特力材料 886-3-5753170  
 勝特力电子(上海) 86-21-34970699  
 勝特力电子(深圳) 86-755-83298787  
[Http://www.100y.com.tw](http://www.100y.com.tw)