

DS2 Series ~Economical Digital Force Gauge~

Simple function digital force gauge

Suitable for checking peak value by digital

Ideal for hand-use force measurement due to the lightweight and the easy grip design.

✦Displayed in digital.

Reading value is easier than in analogue type.

✦Reversible display

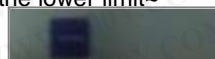
The display can be reversed by easy button operation.



✦OK/NG Judgment

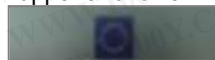
Easy to check OK or NG value by setting upper and lower limit

-NG ~under the lower limit~



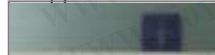
Displayed value < lower limit

OK ~between upper and lower limit~

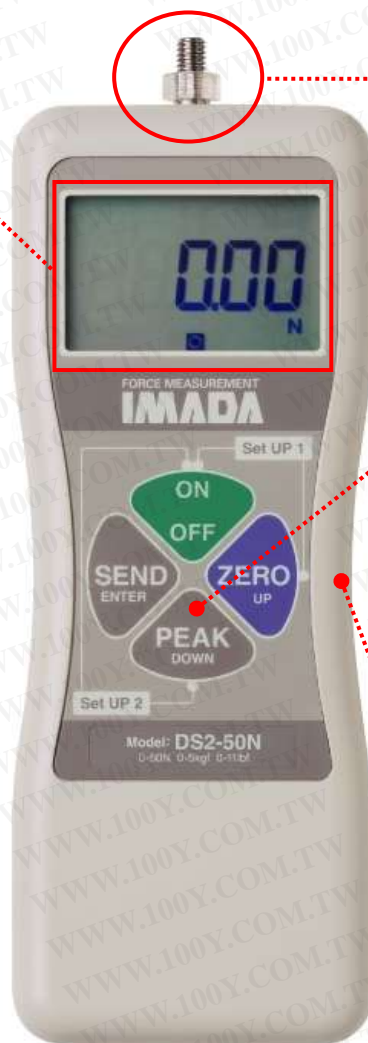


Lower limit < Displayed value < Upper value

+NG ~ over the upper limit



Upper limit < Displayed value



Measuring various tension/compression force by installing an attachment.

It is only one push to turn on peak hold mode.

The easy-grip design helps stable measurement.

[6 included attachments]

Simple tension/compression measurement are possible with included attachments below.

| Small hook A-1(S-1)(SR-1) | Disk shaped A-2(S-2) | Conical shaped A-3(S-3) | Chisel tip A-4(S-4) | Notched tip A-5(S-5) | Extension rod A-6(S-6) |
|------------------------------|-------------------------|----------------------------|------------------------|-------------------------|---------------------------|
| | | | | | |

*A type (made of aluminum) is included in 100N or less capacity force gauges, S type (made of steel) is included for in 200N to 1000N capacity force gauges.

*SR-1 is including for 1000N capacity.

Application

Using with a test stand and a software helps

Effective and Accurate Measurement /Data management

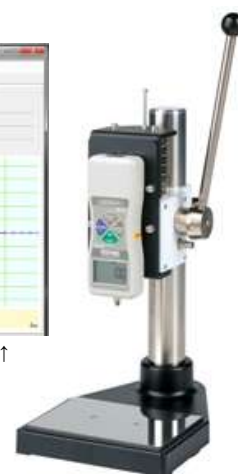
The test stand enables to set measurement condition uniform.

The transferred data to PC can be saved easily and precisely with the software.



Graphing software via RS232C ZLINK3↑

Manual Test StandSVL-1000N→



*Connection cable CB-203 is required for using ZLNK3.

[DS2 Series specifications]

| Model | DS2 Series |
|----------------------------|---|
| Accuracy | ±0.2%F.S.±1digit |
| Unit of measurement | N |
| Display update | 4-digit LCD |
| Sampling rate | 1000 data/sec. (Max.) |
| Battery | 10 hours (Full charge for 10 hours) |
| Safe overload rating | Approx. 200% F.S. |
| Power | Rechargeable NiMH battery pack, AC adapter |
| Operating environment | Temperature : 0 to +40 degree Celsius Humidity : 20 -80%RH |
| Functions | Peak hold (tension and compression)/ Comparator(judgment of acceptance or rejection)/ Reversible display / Dumping (2 Levels) |
| Output | RS232C/Mitutoyo digimatic (*1) /Analog(+/- 1V F.S.) |
| Overload warning | Approx.110% F.S.(Display flashing) |
| External connecting switch | SEND (a point of contact holding) / Zero reset/Peak ON/OFF setting |
| Weight | Approx. 420g (*2) |
| Dimensions | Please refer to dimensions |
| Accessory | AC adapter/ Inspection certificate/Carrying case/ Attachments (Included attachments depend on the force gage range.) |

*1 NOT always available for Mitutoyo digimatic products.

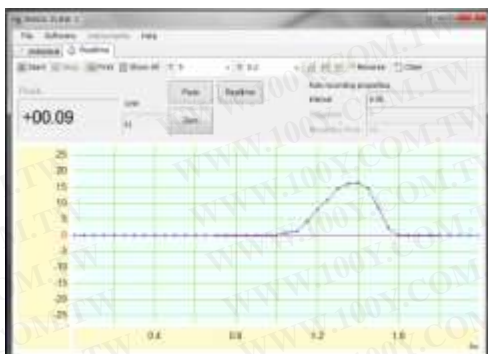
*2 The weight is slightly different depending on the range.

[DS2 Available models]

| Model | Capacity | Display | Resolution | Thread | Including attachment |
|-----------|----------|---------|------------|--------|----------------------|
| DS2-2N | 2N | 2.000N | 0.001N | M6 | A1~A6 |
| DS2-5N | 5N | 5.000N | 0.001N | | |
| DS2-20N | 20N | 20.00N | 0.01N | | |
| DS2-50N | 50N | 50.00N | 0.01N | | |
| DS2-200N | 200N | 200.0N | 0.1N | | (SR-1) S1~S6 |
| DS2-500N | 500N | 500.0N | 0.1N | | |
| DS2-1000N | 1000N | 1000N | 1N | | |

[Related Products]

Graphing Software : ZLINK3



Main Features of ZLINK3

- Force-time graph is able to be drawn at Max 50 times per second.
- Captured data can be saved as CSV file.

*Please refer to ZLINK3 specification if necessary.

*RS232C cable B-203 is necessary to connect DS2 series and PC(PC side connector is 25P male B-201,25P female CB-202 as well).

Standard model digital force gauge ZTS series



ZTS Series

Standard model for reproducible measurement.
Data management is easy due to USB connecting with PC.

The main features of ZTS

- ① Useful and clear display.
- ② Reproducible high speed sampling enables to capture peak value precisely.
- ③ Easy data management by included software "ZT-Logger".
- ④ Multiple functions for improving the usability of various situations.

*Please refer to ZTS specification if necessary.

Printer : DP-1VR



It can print displayed value and inner memory data on the spot. (Required cable:CB-301)

Handle : FOH-1

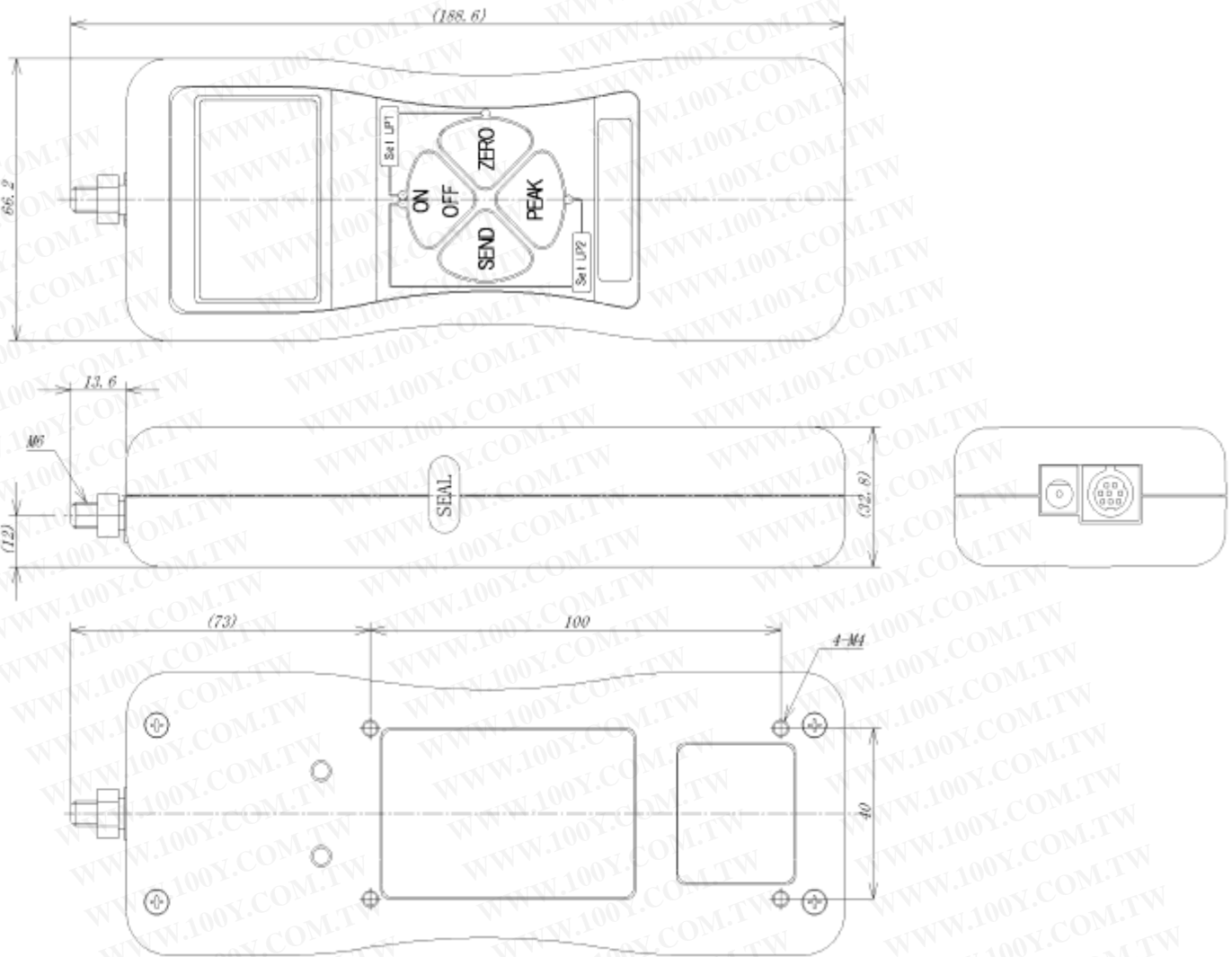


Strong force is able to apply stably at using a force gauge by hands.

[Related Cables]

| Model | Description | Purpose of use |
|--------|--------------------------|--|
| CB-101 | Analogue cable | Connecting multi-meter or oscilloscope |
| CB-203 | RS232C Cable(9P) | Connecting PC using ZLINK3 |
| CB-201 | RS232C Cable(25P male) | Connecting PC using ZLINK3 |
| CB-202 | RS232C Cable(25P female) | Connecting PC using ZLINK3 |
| CB-301 | Digimatic Cable | Connecting Printer DP-1VR |

[Dimensions]



[Calibration Certificate]

- We offer calibration certificate with extra charge.
- We also offer calibration services according to ISO/IEC17025: 2005

[Caution]

- This product is designed for force measurement only. Do not use it for other purpose.
- Do not copy and use this content without authority.
- Please note add load over capacity, or add force from side or torsion, its sensor would be broken down.
- The contents may be changed without notice in advance.