



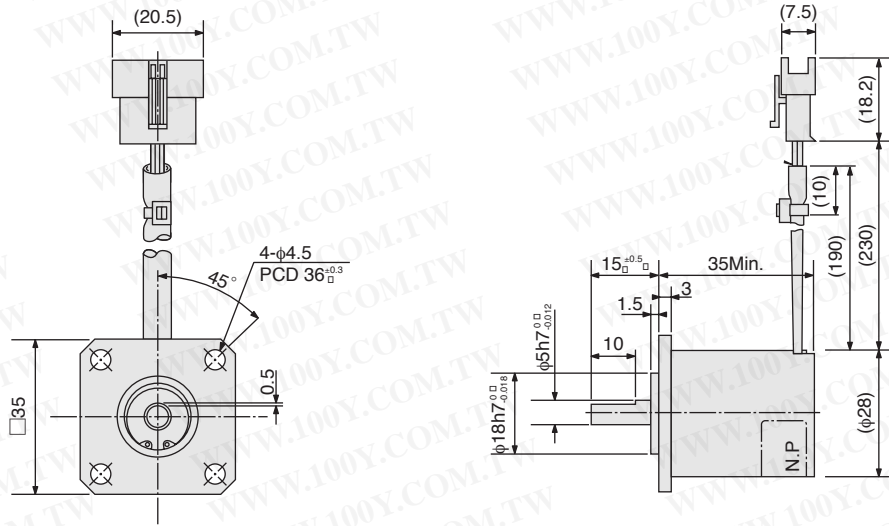
SIZE		10	21	
Model No.		TS2611N11E11	TS2641N11E64	TS2651N11E78
Type		BRX	BRX	BRT
Primary		R1-R2	R1-R2	S1-S3,S2-S4
Input Voltage/Frequency		AC7Vrms 10kHz	AC7Vrms 10kHz	AC3.5Vrms 4kHz
Transformation Ratio		0.5 ± 10%	0.5 ± 5%	0.3 ± 5%
Electrical Error		± 0.5° Max.	± 10' Max.	± 10' Max.
Residual Voltage		50mVrms Max.	20mVrms Max.	—
Phase Shift		+5° Nom.	-5° Max.	—
Impedance	Z <sub>ro</sub>	160 Ω Nom.	190 Ω	51+j90 Ω Nom.
	Z <sub>rs</sub>	—	—	44+j76 Ω Nom.
	Z <sub>so</sub>	—	300 Ω	102+j150 Ω Nom.
	Z <sub>ss</sub>	130 Ω Nom.	270 Ω	—
Operating Temperature		-30 ~ +100°C	-10 ~ +100°C	-10 ~ +150°C
Max.Operating Speed		100s <sup>-1</sup>	83.3s <sup>-1</sup>	133.3s <sup>-1</sup>
Mass		0.1kg Max.	0.3kg Nom.	0.305kg Nom.
Output Type		Normal	Normal + θ CCW	ER1-R2=K(-ES1-S3SIN θ - ES2-S4COS θ)

勝特力材料 886-3-5753170  
 勝特力电子(上海) 86-21-34970699  
 勝特力电子(深圳) 86-755-83298787  
[Http://www.100y.com.tw](http://www.100y.com.tw)

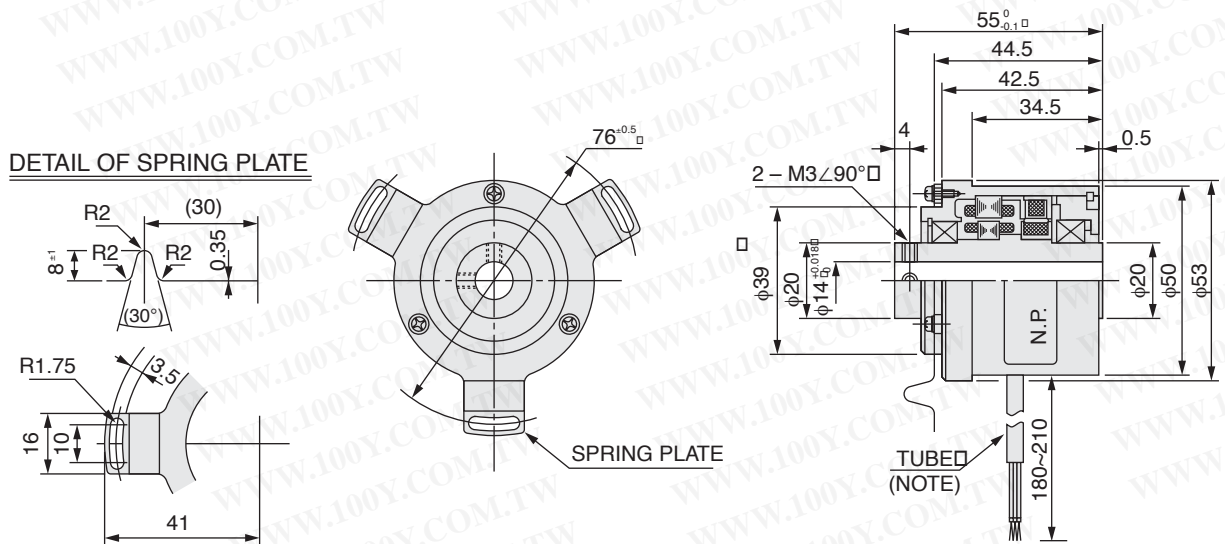
# OUTLINE

(DIMENSION : mm)

SIZE 10 TS2611N11E11



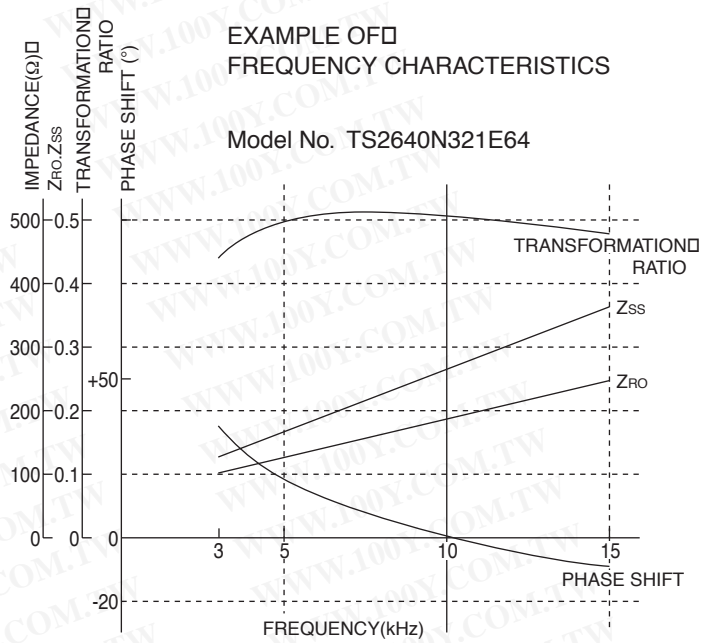
SIZE 21 TS2641N11E64, TS2651N11E78



NOTE TS2641N11E64 : WITHOUT TUBED  
TS2651N11E78 : WITH TUBE

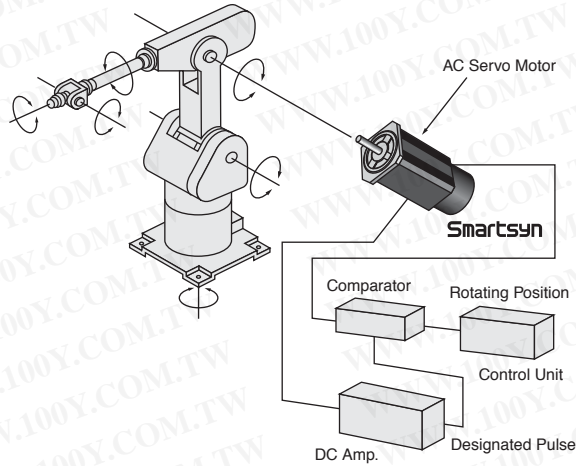
## APPLICATION NOTES

- The supply voltage is a rated value, and a resolver can accept a voltage from 3V to approx. 1.2 times as high as the rating. However, the supply frequency should only be altered within  $\pm 5\%$  lest it should affect the accuracy. Electrical parameters largely vary as the frequency varies as shown on the right.
- When a noise source is in vicinity, or when signal transfer distance is long, twisted/shielded pair cables should be used. When a noise still exists on the signals, they should be received by a differential amplifier.
- In BRX resolver, the two output voltages should be connected to the same amount of loads each other, or the voltages will get disproportionate, thus affect the accuracy.
- When an intense magnetic field surrounds a resolver, it may not work properly with its magnetic flux affected.
- When a resolver is used in a high humidity as close to 100% Rh for a long time, waterproof structure should be considered lest its insulation materials should deteriorate.
- All resolvers in the catalog are  $1 \times (2 \text{ poles})$  resolvers. For winding modifications to other speeds, please consult us.

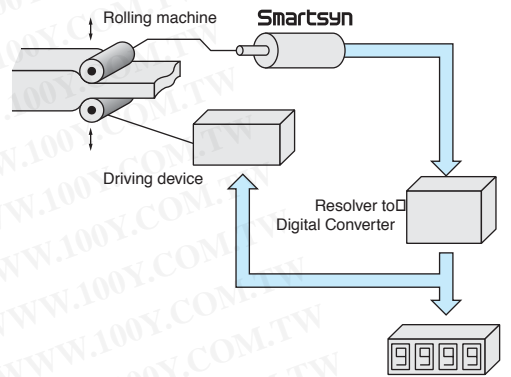


# APPLICATIONS

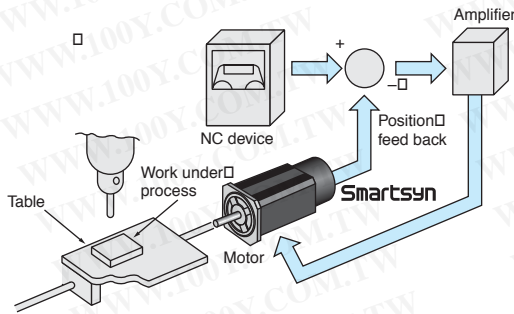
- For Driving Robot Hand and Body.



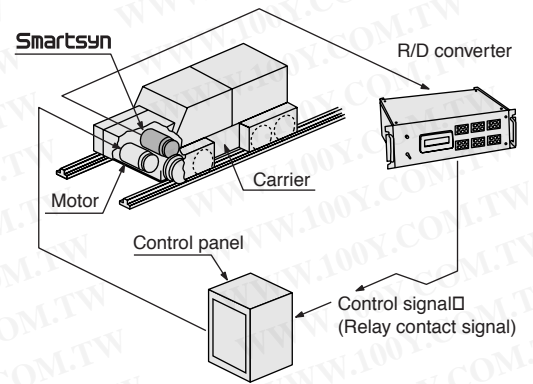
- Applicable to the roller positioning control of rolling mills.



- Smartsyn resolvers which are reliable at high speed are suitable for numerical control systems.



- Detection of traveling position of automatic carrier



勝特力材料 886-3-5753170  
 勝特力电子(上海) 86-21-34970699  
 勝特力电子(深圳) 86-755-83298787  
[Http://www.100y.com.tw](http://www.100y.com.tw)