

# WS SERIES MARK SWITCH

## Features

- The WS series Mark Sensors used the advanced E/O as well as double Side SMT technology,thus enable this series features.
- Small sport size、Dual light source、Economic price.
- By using the GREEN as well as RED LED as light source simultaneously, the color discrimination capability is greatly enhanced.
- For economic purpose,the single color model is also introduced.



勝特力材料 886-3-5753170  
 勝特力电子(上海) 86-21-34970699  
 勝特力电子(深圳) 86-755-83298787  
[Http://www.100y.com.tw](http://www.100y.com.tw)

## Specifications

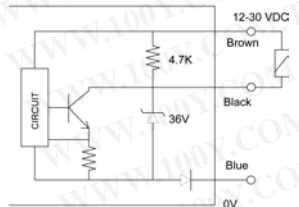
Operating Voltage	12-30 VDC
Sensing Distance	8mm or 12mm,Selectable
Current Consumption	Less than 45Ma
Power on Reset Time	20ms
Response Time	1ms 0.3ms for (H)
Circuit Protection	Output short circuit. Reverse polarity of supply voltage.
Max. Load Current	120mA
Sealing	Conforming to Ip66 (IEC).
Cable Length	2 meter,oil retardant,gray color.
Wiring Diagram	Brown,black,white and blue as standard. Both Light-on and Dark-on Output included.

## Product Selection

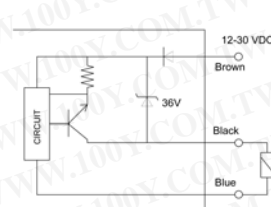
	Light Source	Focus Length	Universal Output	PNP Output
Dual Color	Red, Green	12mm	WS-C2 (H)	WS-C4
	Red, Green Green	8mm 12mm	WS-C2A (H) WS-C2G	
Single Color	White	12mm	WS-C2w	WS-C4w
Dual Color	Blue, Yellow	12mm	WS-CB2 (H)	WS-CB4

## Output Circuit

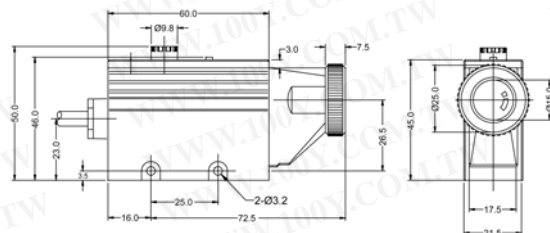
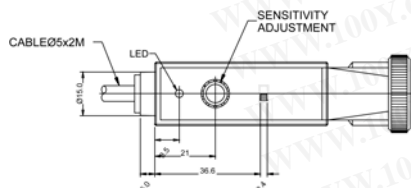
Universal Output



PNP Output



## Dimensions (unit : mm)



**HIGHLY**

D11

Design, specifications are subject to change without notice.