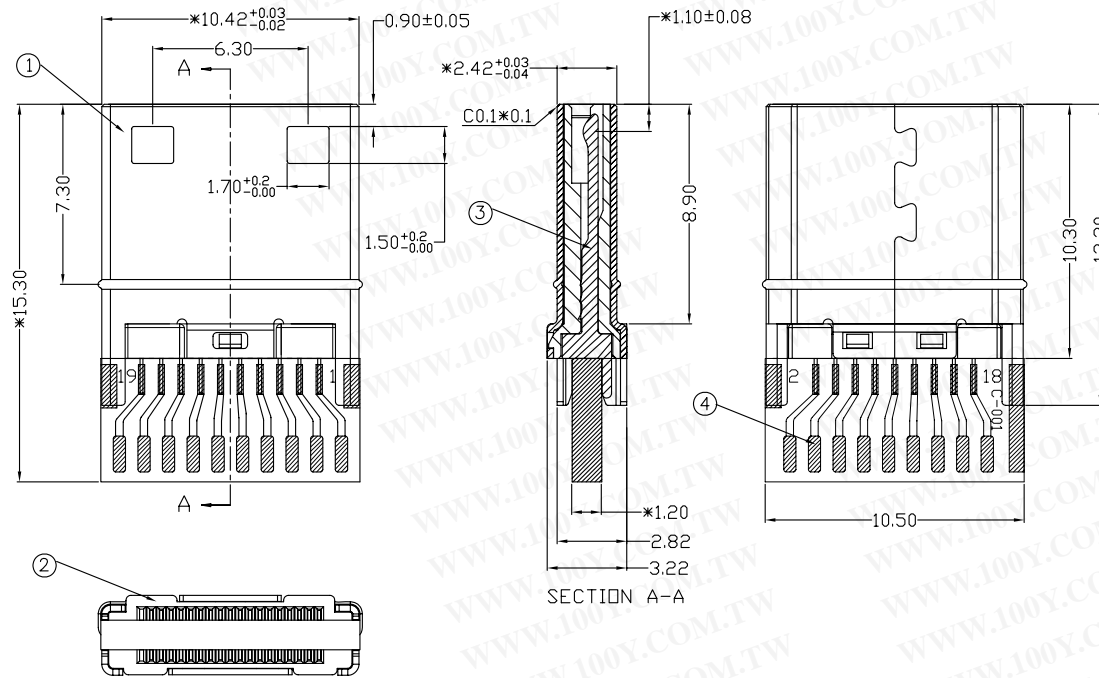
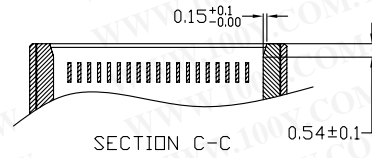
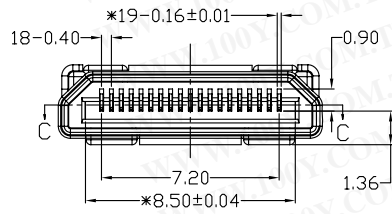


| REV | ZONE | REVISION | DATE |
|-----|------|----------|------|
| A1 | | | |



| NO. | NAME | MATERIAL | FINISH | Q'TY | REMARK |
|-----|-------------|--------------|-----------------|------|---|
| 1 | FRONT SHELL | BRASS T:0.25 | GOLD PLATED | 1 | Gold1u' |
| 2 | BODY | LCP+GF30% | GRAY | 1 | |
| 3 | TERMINAL | PBS T:0.12 | GOLD/TIN PLATED | 19 | Gold:30u', Ni:40~60u', Tin:120~200u' |
| 4 | PCB | T:1.2 | | 1 | |

Specification:

- ❖ Contact Resistance: Unmated Plug Socket, 30m Ohm. Maximum.
Mated Plug Socket, 60m Ohm. Maximum.
- ❖ Insulation Resistance: 100M Ohm Min. At 500 VDC.
- ❖ Rated Voltage And Current: AC 40V,0.5A Minimum.
- ❖ Dielectric Withstanding Voltage: 500V AC (rms) For 1 Minute.
- ❖ Insertion Force: Type C- 44.1N Maximum.
- ❖ Extraction Force: Type C- 7N Minimum,25N Maximum.
- ❖ Durability: Type A- 5000 Cycles At 100±50 Cycles Per Hour.
Life Test After: Type C-Insertion/Extraction Force: 7N Minimum.
- ❖ Operating Temperature: -20°C ~ +85°C.

勝特力材料 886-3-5753170
勝特力电子(上海) 86-21-54151736
勝特力电子(深圳) 86-755-83298787
[Http://www.100y.com.tw](http://www.100y.com.tw)



| MODEL | | | PAGE 1 OF 1 | | | COMPUTER NO. | UNIT | SCALE | PART NAME | |
|-------|--|------|-------------|----------|---|----------------------------|------|-------|------------------|--|
| | | | | | | D:\DWG\HDMI-KPKB00-C01G3-L | mm | 1:1 | HDMI C TYPE PLUG | |
| APPD. | | CKD. | DWG. | DATE | TOLERANCE | PART NO. | | REV. | | |
| | | | TINA | 04-11-08 | X. ±0.38 .X ±0.25 .XX ±0.13 .XXX ±0.05 | | | A1 | | |