

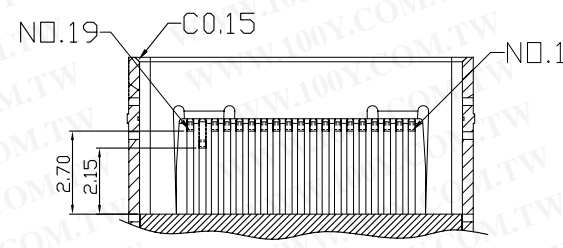
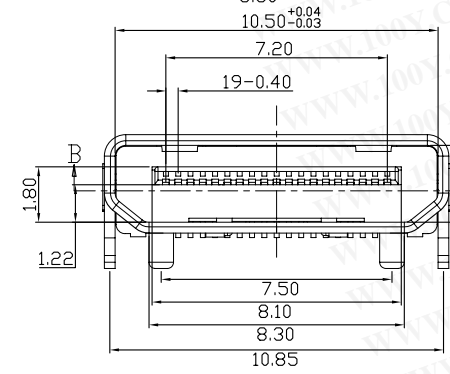
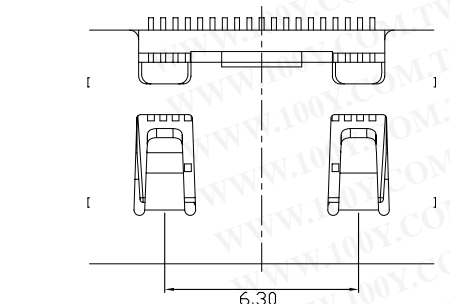
REV	ZONE	REVISION	DATE

NO.	NAME	MATERIAL	FINISH	Q'TY	REMARK
1	FRONT SHELL	BRASS 0.35	GOLD PLATED	1	Gold1u'
2	BODY	LCP+GF 30%	GRAY	1	
3	TERMINAL	PHOS.BRONZE T:0.15	GOLD PLATED	19	Contact: Gold15u'; Ni40~60u' Gold1u'

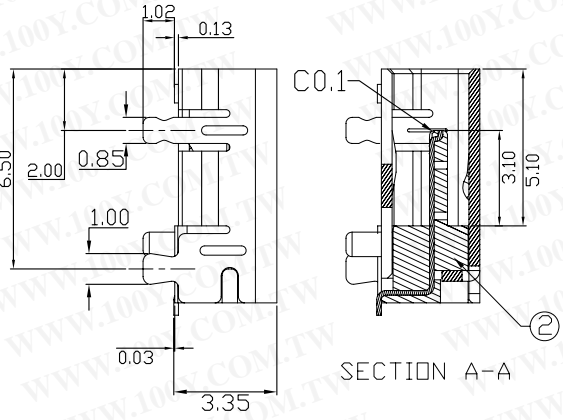
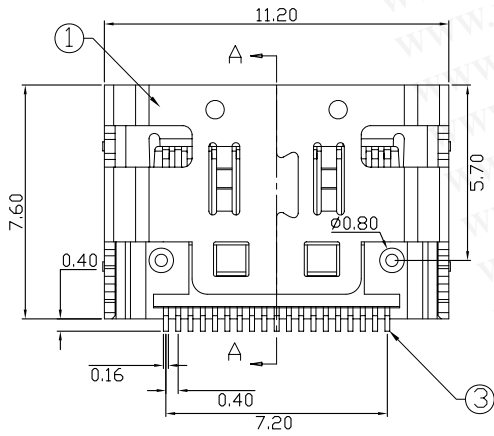
Green Product

Specification:

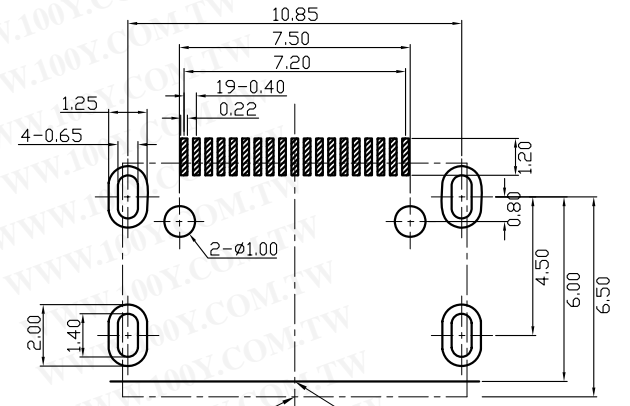
- ❖ Contact Resistance: Unmated Plug Socket, 30m Ohm. Maximum.
Mated Plug Socket, 60m Ohm. Maximum.
- ❖ Insulation Resistance: 100M Ohm Min. At 500 VDC.
- ❖ Rated Voltage And Current: AC 40V,0.5A Minimum.
- ❖ Dielectric Withstanding Voltage: 500V AC (rms) For 1 Minute.
- ❖ Insertion Force: Type C- 44.1N Maximum.
- ❖ Extraction Force: Type C- 7N Minimum,25N Maximum.
- ❖ Durability:
Life Test After: Type C-Insertion/Extraction Force: 7N Minimum.
- ❖ Operating Temperature: -20°C ~ +85°C.



SECTION B-B



SECTION A-A



HDMI RECEPTACLE, TYPE C PCB EDGE

COMPONENT SIDE (PCB LAYOUT)

勝特力材料 886-3-5753170
 勝特力电子(上海) 86-21-54151736
 勝特力电子(深圳) 86-755-83298787
 Http://www.100y.com.tw

COMPUTER NO.		UNIT	SCALE	PART NAME	
D:\DWG\HDMI-KRPS00-C01G3-L		mm	1:1	HDMI C RECEPTACLE	
APPD.	CKD.	DWG.	DATE	TOLERANCE	PART NO. REV.
MODEL	HDMI-KRPS00-C01G3-L	PAGE 1 OF 1	TINA	14-02-07	A0

X.	+0.38
.X	+0.25
.XX	+0.13
.XXX	+0.05