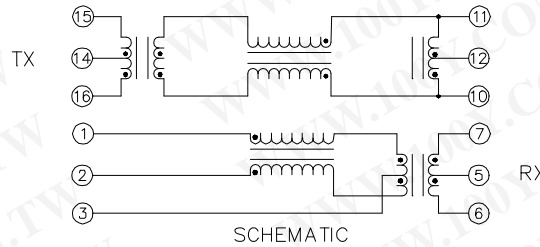


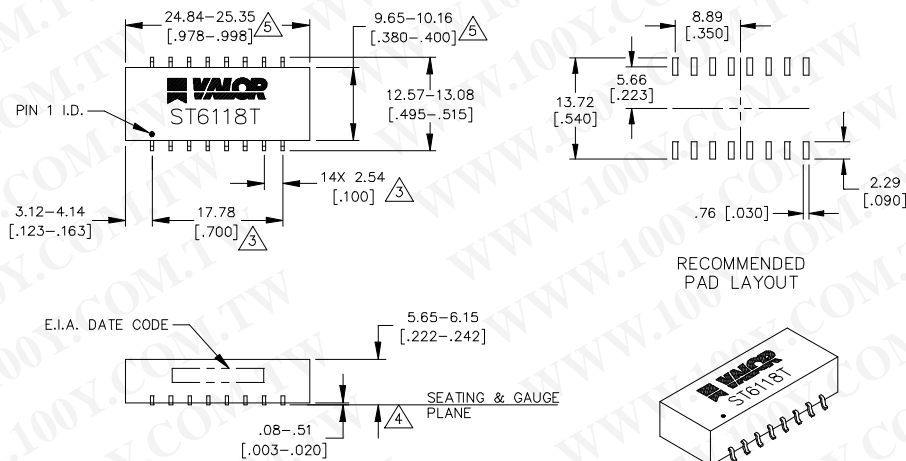
Electrical



ELECTRICAL SPECIFICATIONS @ 25°C

TYPE	TRANSMITTER	RECEIVER
INSERTION LOSS	: -1.0dB MAX (1 TO 60 MHz) : -2.0dB MAX @ 100 MHz : -3.0dB MAX @ 125 MHz	: -1.0dB MAX (1 TO 60 MHz) : -2.0dB MAX @ 100 MHz : -3.0dB MAX @ 125 MHz
RETURN LOSS (16-15) TO (10-11)	: -18dB MIN (1 TO 30 MHz) : -12dB MIN @ 60 MHz : -10dB MIN @ 80 MHz	: -18dB MIN (1 TO 30 MHz) : -12dB MIN @ 60 MHz : -10dB MIN @80 MHz
RETURN LOSS (16-14) TO (10-11)	: -17dB MIN (1 TO 10 MHz)	
COMMON MODE REJECTION	: -45dB MIN (1 TO 30MHz) : -35dB MIN (30 TO 100 MHz) : -9dB MIN (100 TO 500MHz)	: -45dB MIN (1 TO 30MHz) : -35dB MIN (30 TO 100MHz) : -9dB MIN (100 TO 500MHz)
CROSS TALK	: -35dB MIN (1 TO 80 MHz)	: -35dB MIN (1 TO 80MHz)
ISOLATION	: 1500VRMS (PRI-SEC)	: 1500VRMS (PRI-SEC)
OCL (REF) (16-15) OPEN 10,11	: 350μH MIN @100KHz, 100mV, 8mA	

Mechanical



△ DIMENSIONS NOT TO INCLUDE MAXIMUM FLASH .25 [.010].

△ COPLANARITY: .10 [.004].

△ LEADS WITHIN .13 [.005] RADIUS OF TRUE POSITION AT GAUGE PLANE WITH MAXIMUM MATERIAL CONDITION AND UNIT INSTALLED.

2. LEAD: SOLDERABILITY PER MIL-STD-202, METHOD 208.

△ PACKAGE: THERMOSET PLASTIC, BLACK, SELF-EXTINGUISHING PER UL94V-0.

NOTES: UNLESS OTHERWISE SPECIFIED