

Coaxial Frequency Mixer

ZP-3LH+

Level 10 (LO Power +10 dBm) 0.15 to 400 MHz



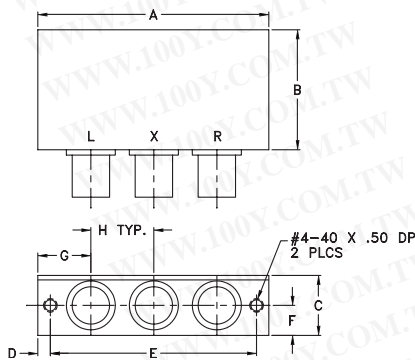
Maximum Ratings

Operating Temperature	-55°C to 100°C
Storage Temperature	-55°C to 100°C
RF Power	50mW
IF Current	40mA
Permanent damage may occur if any of these limits are exceeded.	

Coaxial Connections

LO	L
RF	R
IF	X

Outline Drawing



Outline Dimensions (inch/mm)

A	B	C	D	E	F	G	H	wt
2.31	1.20	.60	.125	2.062	.30	.53	.63	grams
58.67	30.48	15.24	3.18	52.37	7.62	13.46	16.00	75.0

Features

- low conversion loss, 4.8 dB typ.
- high L-R isolation, 51 dB typ., L-I, 45 dB typ.
- IF response to DC
- rugged shielded case

Applications

- VHF/UHF
- instrumentation

BNC version shown
CASE STYLE: GG60

Connectors	Model
BNC	ZP-3LH+
SMA	ZP-3LH-S+

+ RoHS compliant in accordance with EU Directive (2002/95/EC)

The +Suffix has been added in order to identify RoHS Compliance. See our web site for RoHS Compliance methodologies and qualifications.

Electrical Specifications

FREQUENCY (MHz)	CONVERSION LOSS (dB)	LO-RF ISOLATION (dB)			LO-IF ISOLATION (dB)												
		L	M	U	L	M	U										
LO/RF f_L - f_U	Mid-Band m \bar{X} σ Max.	Typ.	Min.	Typ.	Min.	Typ.	Min.	Typ.	Min.	Typ.	Min.						
0.15-400	DC-400	4.8	0.37	7.0	8.0	67	50	51	30	40	25	67	40	45	25	34	20

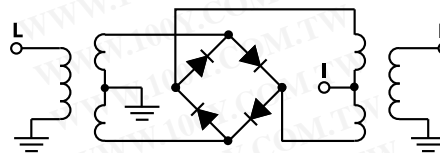
1 dB COMP.: +5 dBm typ.

L = low range [f_L to $10 f_L$] M = mid range [$10 f_L$ to $f_U/2$] U = upper range [$f_U/2$ to f_U]
m = mid band [$2f_L$ to $f_U/2$]

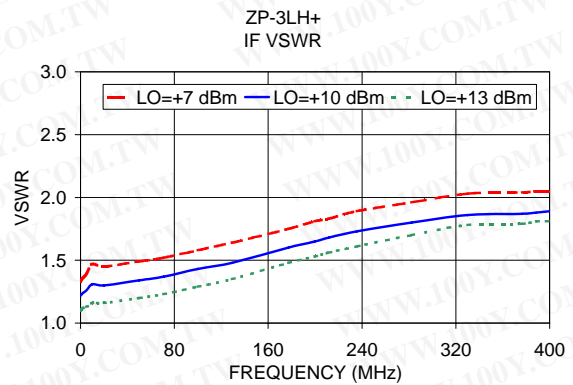
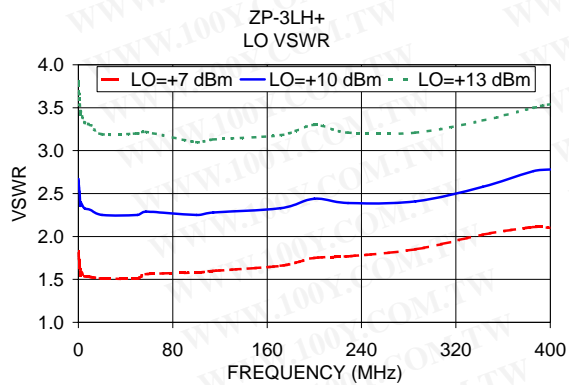
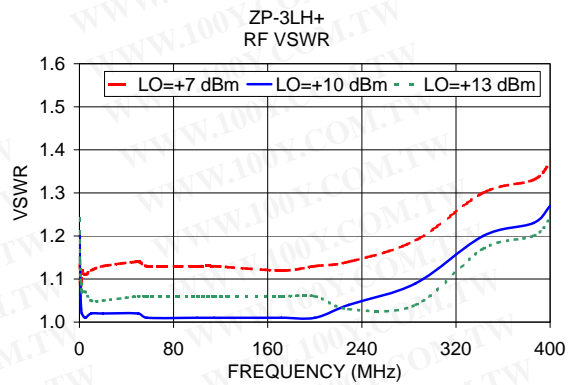
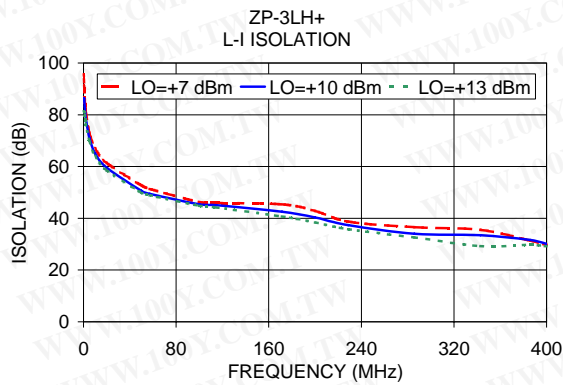
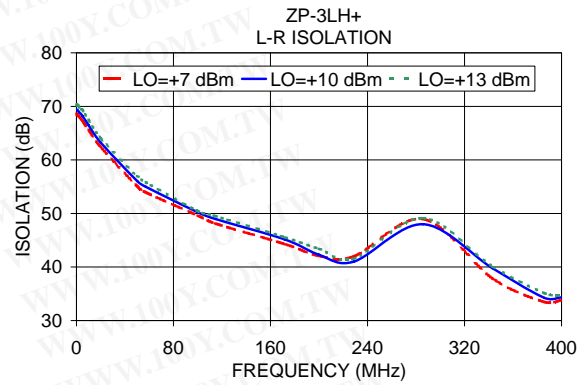
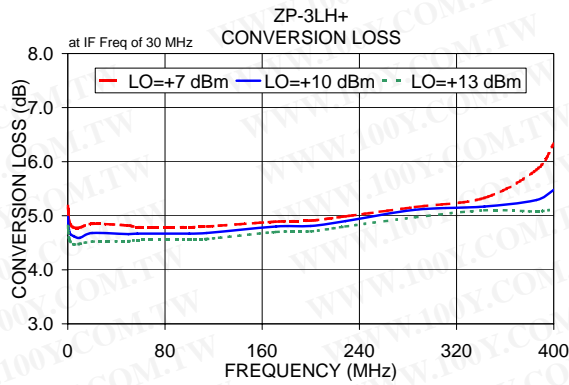
Typical Performance Data

Frequency (MHz)	Conversion Loss (dB)	Isolation L-R (dB)	Isolation L-I (dB)	VSWR RF Port (:1)	VSWR LO Port (:1)	
						LO +10dBm
RF	LO	LO +10dBm	LO +10dBm	LO +10dBm	LO +10dBm	
0.15	30.15	4.98	69.38	85.98	1.21	2.67
0.30	30.30	4.90	69.38	85.28	1.15	2.64
0.50	30.50	4.83	69.26	86.26	1.10	2.57
1.00	31.00	4.74	69.26	83.06	1.06	2.52
1.50	31.50	4.69	69.08	80.98	1.03	2.36
2.00	32.00	4.66	68.95	78.75	1.02	2.40
5.00	35.00	4.62	68.20	71.20	1.01	2.33
10.00	40.00	4.59	66.47	65.07	1.02	2.31
20.00	50.00	4.68	63.23	59.53	1.02	2.25
50.00	80.00	4.66	56.07	50.61	1.02	2.25
57.27	87.27	4.67	54.97	49.44	1.01	2.29
100.00	70.00	4.67	50.23	45.42	1.01	2.25
114.39	84.39	4.68	48.98	45.06	1.01	2.28
171.51	14.15	4.80	45.17	42.49	1.01	2.33
200.00	170.00	4.81	42.29	40.27	1.01	2.44
228.64	198.64	4.90	41.00	37.35	1.04	2.39
285.76	255.76	5.11	48.00	34.00	1.09	2.41
342.88	312.88	5.17	39.79	33.43	1.20	2.58
385.72	356.72	5.29	34.24	31.62	1.23	2.76
400.00	370.00	5.48	34.34	30.09	1.27	2.78

Electrical Schematic



勝特力材料 886-3-5753170
 勝特力电子(上海) 86-21-34970699
 勝特力电子(深圳) 86-755-83298787
[Http://www.100y.com.tw](http://www.100y.com.tw)



勝特力材料 886-3-5753170
 勝特力电子(上海) 86-21-34970699
 勝特力电子(深圳) 86-755-83298787
[Http://www.100y.com.tw](http://www.100y.com.tw)