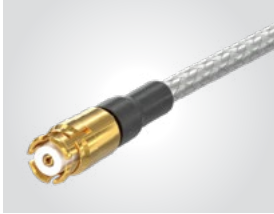


SMP TO 40 GHz

SMP Cable Assemblies RF25S, RF405



VSWR

RF25S: Contact Samtec
RF405: Contact Samtec

SERIES	END 1 CONNECTOR	END 2 CONNECTOR	OVERALL LENGTH
--------	-----------------	-----------------	----------------

RF25S
 = MWC-2550-01 microwave cable with 25 AWG solid FEP dielectric

RF405
 = RG 405 (.086") 24 AWG semi-flexible microwave cable

-00SJ7
 = SMP Straight Jack

-00RJ7
 = SMP Right-angle Jack

-"XXXX"
 = Overall Length in millimeters
 -0100 (100 mm) 3.94" minimum

ALSO AVAILABLE

SMA = RF25S
 SMA = RF405

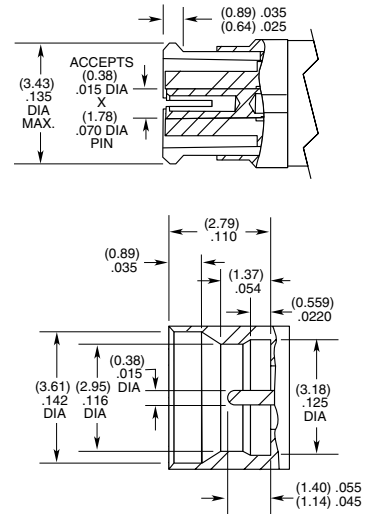
SMP Cable Connectors PRF00



CONNECTORS FOR INDUSTRY STANDARD CABLES	
PRF00-J-C-EE-047A-RD	.047 Temp-Flex, low loss flexible, 29 AWG
PRF00-J-C-EE-085A-SD	.085, semi-rigid, 23 AWG
PRF00-PF-C-KK-047D-BD	.047, semi-rigid

J-C = Cable Jack
 EE = Plating (50 μ" Gold center contact & outer contact)
 KK = Plating (100 μ" Gold over Nickel center contact, passivated outer contact)
 BD = Bulkhead, Direct Solder
 SD = Straight, Direct Solder
 RD = Right-angle, Direct Solder

INTERFACE STANDARD (FULL DETENT)



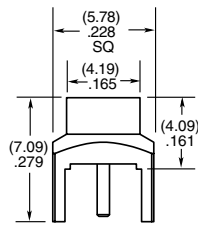
SMP TO 40 GHz

SMP Board Connectors SMP-TH, SMP-EM

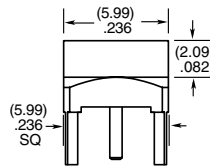
Cable Mates:
RF405, RF255



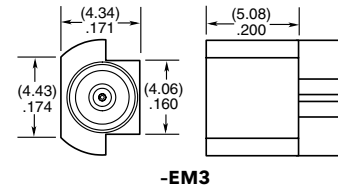
SMP	GENDER	TYPE	PLATING	ORIENTATION	TERMINATION
	-PF = Plug, Full Detent -PL = Plug, Limited Detent -PS = Plug, Smooth Bore -PC = Plug, Catcher's Mitt	-P = PCB Mount	-GF = 10 μ " (0.25 μ m) Gold center contact, Gold Flash outer contact (-TH2 only) -HH = 30 μ " (0.76 μ m) Gold center and outer contact (-EM3)	-ST = Straight	-TH2 = Through-hole -EM3 = Drop-in Edge Mount (Not available with -PC)



-PF/-PL/-PS-TH2



-PC-TH2

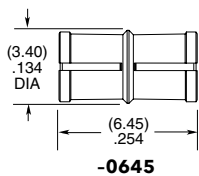


-EM3

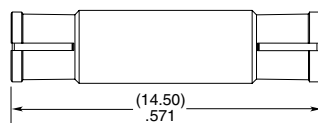
SMP Bullet Adaptor SMP-B



SMP	J	TYPE	PLATING	ORIENTATION	BULLET LENGTH
		-B = Bullet Adaptor	-GF = 10 μ " (0.25 μ m) Gold center contact, Gold Flash outer contact	-ST = Straight	-0645 = 6.45 mm (.254") -1450 = 14.50 mm (.571")

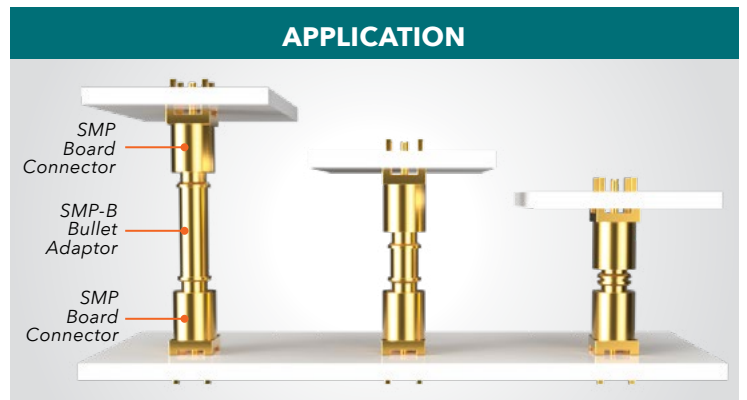


-0645



-1450

APPLICATION



Compensates for axial & radial misalignment