

Standard 78M series, 3-pin regulator

BA178M00T / BA178M00FP series

The BA178M00T and BA178M00FP series are 3-pin, fixed positive output voltage regulators. These regulators are used to provide a stabilized output voltage from a fluctuating DC input voltage.

There are 11 fixed output voltages, as follows : 5V, 6V, 7V, 8V, 9V, 10V, 12V, 15V, 18V, 20V, and 24V.

The maximum current capacity is 0.5A for each of the above voltages.

●Application

Constant voltage power supply

●Features

- 1) Built-in overcurrent protection circuit and thermal shutdown circuit.
- 2) Excellent ripple regulation.
- 3) Available in TO-220FP and TO252-3 packages, to meet wide range of applications.
- 4) Compatible with other manufacturers' regulators.
- 5) Richly diverse lineup. (5V, 6V, 7V, 8V, 9V, 10V, 12V, 15V, 18V, 20V, 24 V)

●Product codes

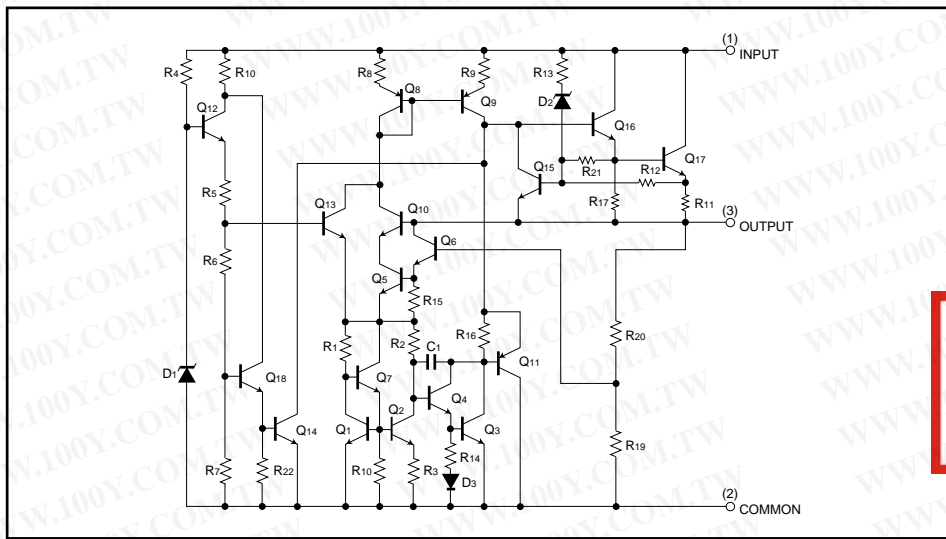
Output voltage (V)	Product No.	Output voltage (V)	Product No.
5	BA178M05T / FP	12	BA178M12T / FP
6	BA178M06T / FP	15	BA178M15T / FP
7	BA178M07T / FP	18	BA178M18T / FP
8	BA178M08T / FP	20	BA178M20T / FP
9	BA178M09T / FP	24	BA178M24T / FP
10	BA178M10T / FP	-	-

勝特力材料 886-3-5753170
 勝特力电子(上海) 86-21-54151736
 勝特力电子(深圳) 86-755-83298787
[Http://www.100y.com.tw](http://www.100y.com.tw)

BA178M00T / BA178M00FP series

Regulator ICs

●Internal circuit configuration diagram



勝特力材料 886-3-5753170
 勝特力电子(上海) 86-21-54151736
 勝特力电子(深圳) 86-755-83298787
[Http://www.100y.com.tw](http://www.100y.com.tw)

●Absolute maximum ratings (Ta=25°C)

«Common specifications for BA178M00T / FP series»

Parameter	Symbol	Limits	Unit
Applied voltage	V_{IN}	35	V
Power dissipation	TO220FP	2.0 *	W
	TO252-3	1.0 *	
Operating temperature	T_{opr}	-40~+85	°C
Storage temperature	T_{stg}	-55~+150	°C

* Reduced by 16 mW (TO220FP) and 8 mW (TO252-3) for each increase in T_a of 1°C over 25°C (without heat sink).

●Recommended operating conditions (Ta=25°C)

BA178M05T / FP

Parameter	Symbol	Min.	Typ.	Max.	Unit
Input voltage	V_{IN}	7.5	-	20	V
Output current	I_o	-	-	0.5	A

BA178M06T / FP

Parameter	Symbol	Min.	Typ.	Max.	Unit
Input voltage	V_{IN}	8.5	-	21	V
Output current	I_o	-	-	0.5	A

BA178M07T / FP

Parameter	Symbol	Min.	Typ.	Max.	Unit
Input voltage	V_{IN}	9.5	-	22	V
Output current	I_o	-	-	0.5	A

BA178M08T / FP

Parameter	Symbol	Min.	Typ.	Max.	Unit
Input voltage	V_{IN}	10.5	-	23	V
Output current	I_o	-	-	0.5	A

BA178M09T / FP

Parameter	Symbol	Min.	Typ.	Max.	Unit
Input voltage	V_{IN}	11.5	-	24	V
Output current	I_o	-	-	0.5	A

BA178M10T / FP

Parameter	Symbol	Min.	Typ.	Max.	Unit
Input voltage	V_{IN}	12.5	-	25	V
Output current	I_o	-	-	0.5	A

BA178M00T / BA178M00FP series

Regulator ICs

BA178M12T / FP

Parameter	Symbol	Min.	Typ.	Max.	Unit
Input voltage	V _{IN}	15	–	27	V
Output current	I _o	–	–	0.5	A

BA178M15T / FP

Parameter	Symbol	Min.	Typ.	Max.	Unit
Input voltage	V _{IN}	17.5	–	30	V
Output current	I _o	–	–	0.5	A

BA178M18T / FP

Parameter	Symbol	Min.	Typ.	Max.	Unit
Input voltage	V _{IN}	21	–	33	V
Output current	I _o	–	–	0.5	A

BA178M20T / FP

Parameter	Symbol	Min.	Typ.	Max.	Unit
Input voltage	V _{IN}	23	–	33	V
Output current	I _o	–	–	0.5	A

BA178M24T / FP

Parameter	Symbol	Min.	Typ.	Max.	Unit
Input voltage	V _{IN}	27	–	33	V
Output current	I _o	–	–	0.5	A

勝特力材料 886-3-5753170
勝特力电子(上海) 86-21-54151736
勝特力电子(深圳) 86-755-83298787
[Http://www.100y.com.tw](http://www.100y.com.tw)

●Electrical characteristics

<BA178M05T / FP individual specifications> (unless otherwise noted, T_a=25°C, V_{IN}=10V, I_o=350mA)

Parameter	Symbol	Min.	Typ.	Max.	Unit	Conditions	Measurement circuit
Output voltage 1	V _{O1}	4.8	5.0	5.2	V	I _o =350mA	Fig.1
Output voltage 2	V _{O2}	4.75	–	5.25	V	V _{IN} =7.5~20V, I _o =5~350mA	Fig.1
Input stability 1	Reg.I ₁	–	3	100	mV	V _{IN} =7~25V, I _o =200mA	Fig.1
Input stability 2	Reg.I ₂	–	1	50	mV	V _{IN} =8~12V, I _o =200mA	Fig.1
Ripple rejection ratio	R.R.	62	78	–	dB	e _{IN} =1V _{rms} , f=120Hz, I _o =100mA	Fig.2
Load regulation 1	Reg.L ₁	–	20	100	mV	I _o =5~500mA	Fig.1
Load regulation 2	Reg.L ₂	–	10	50	mV	I _o =5~200mA	Fig.1
Temperature coefficient of output voltage	T _{CVO}	–	–1.0	–	mV/°C	I _o =5mA, T _j =0~125°C	Fig.1
Output noise voltage	V _n	–	40	–	μV	f=10Hz~100kHz	Fig.3
Minimum I/O voltage differential	V _d	–	2.0	–	V	I _o =500mA	Fig.4
Bias current	I _b	–	4.5	6.0	mA	I _o =0mA	Fig.5
Bias current change 1	I _{b1}	–	–	0.5	mA	I _o =5~350mA	Fig.5
Bias current change 2	I _{b2}	–	–	0.8	mA	V _{IN} =8~25V, I _o =200mA	Fig.5
Peak output current	I _{o-P}	–	875	–	mA	T _j =25°C	Fig.1
Output short-circuit current	I _{OS}	–	0.4	–	A	V _{IN} =25V	Fig.6

BA178MOOT / BA178MOOPF series

Regulator ICs

<BA178M06T / FP individual specifications> (unless otherwise noted, $T_a=25^\circ\text{C}$, $V_{IN}=11\text{V}$, $I_o=350\text{mA}$)

Parameter	Symbol	Min.	Typ.	Max.	Unit	Conditions	Measurement circuit
Output voltage 1	V_{O1}	5.75	6.0	6.25	V	$I_o=350\text{mA}$	Fig.1
Output voltage 2	V_{O2}	5.7	-	6.3	V	$V_{IN}=8.5\sim 21\text{V}$, $I_o=5\sim 350\text{mA}$	Fig.1
Input stability 1	Reg.L1	-	3	100	mV	$V_{IN}=8\sim 25\text{V}$, $I_o=200\text{mA}$	Fig.1
Input stability 2	Reg.L2	-	1	50	mV	$V_{IN}=9\sim 25\text{V}$, $I_o=200\text{mA}$	Fig.1
Ripple rejection ratio	R.R.	60	74	-	dB	$e_{IN}=1\text{V}_{\text{rms}}$, $f=120\text{Hz}$, $I_o=100\text{mA}$	Fig.2
Load regulation 1	Reg.L1	-	20	120	mV	$I_o=5\sim 500\text{mA}$	Fig.1
Load regulation 2	Reg.L2	-	10	60	mV	$I_o=5\sim 200\text{mA}$	Fig.1
Temperature coefficient of output voltage	T_{CVO}	-	-0.5	-	$\text{mV}/^\circ\text{C}$	$I_o=5\text{mA}$, $T_J=0\sim 125^\circ\text{C}$	Fig.1
Output noise voltage	V_n	-	60	-	μV	$f=10\text{Hz}\sim 100\text{kHz}$	Fig.3
Minimum I/O voltage differential	V_d	-	2.0	-	V	$I_o=500\text{mA}$	Fig.4
Bias current	I_b	-	4.5	6.0	mA	$I_o=0\text{mA}$	Fig.5
Bias current change 1	I_{b1}	-	-	0.5	mA	$I_o=5\sim 350\text{mA}$	Fig.5
Bias current change 2	I_{b2}	-	-	0.8	mA	$V_{IN}=9\sim 25\text{V}$, $I_o=200\text{mA}$	Fig.5
Peak output current	I_{o-P}	-	875	-	mA	$T_J=25^\circ\text{C}$	Fig.1
Output short-circuit current	I_{os}	-	0.4	-	A	$V_{IN}=25\text{V}$	Fig.6

<BA178M07T / FP individual specifications> (unless otherwise noted, $T_a=25^\circ\text{C}$, $V_{IN}=13\text{V}$, $I_o=350\text{mA}$)

Parameter	Symbol	Min.	Typ.	Max.	Unit	Conditions	Measurement circuit
Output voltage 1	V_{O1}	6.7	7.0	7.3	V	$I_o=350\text{mA}$	Fig.1
Output voltage 2	V_{O2}	6.65	-	7.35	V	$V_{IN}=9.5\sim 22\text{V}$, $I_o=5\sim 350\text{mA}$	Fig.1
Input stability 1	Reg.L1	-	4	100	mV	$V_{IN}=9\sim 25\text{V}$, $I_o=200\text{mA}$	Fig.1
Input stability 2	Reg.L2	-	1	50	mV	$V_{IN}=10\sim 25\text{V}$, $I_o=200\text{mA}$	Fig.1
Ripple rejection ratio	R.R.	57	71	-	dB	$e_{IN}=1\text{V}_{\text{rms}}$, $f=120\text{Hz}$, $I_o=100\text{mA}$	Fig.2
Load regulation 1	Reg.L1	-	20	140	mV	$I_o=5\sim 500\text{mA}$	Fig.1
Load regulation 2	Reg.L2	-	10	70	mV	$I_o=5\sim 200\text{mA}$	Fig.1
Temperature coefficient of output voltage	T_{CVO}	-	-0.5	-	$\text{mV}/^\circ\text{C}$	$I_o=5\text{mA}$, $T_J=0\sim 125^\circ\text{C}$	Fig.1
Output noise voltage	V_n	-	70	-	μV	$f=10\text{Hz}\sim 100\text{kHz}$	Fig.3
Minimum I/O voltage differential	V_d	-	2.0	-	V	$I_o=500\text{mA}$	Fig.4
Bias current	I_b	-	4.5	6.0	mA	$I_o=0\text{mA}$	Fig.5
Bias current change 1	I_{b1}	-	-	0.5	mA	$I_o=5\sim 350\text{mA}$	Fig.5
Bias current change 2	I_{b2}	-	-	0.8	mA	$V_{IN}=10\sim 25\text{V}$, $I_o=200\text{mA}$	Fig.5
Peak output current	I_{o-P}	-	875	-	mA	$T_J=25^\circ\text{C}$	Fig.1
Output short-circuit current	I_{os}	-	0.4	-	A	$V_{IN}=25\text{V}$	Fig.6

BA178MOOT / BA178MOOFP series

Regulator ICs

<BA178M08T / FP individual specifications> (unless otherwise noted, Ta=25°C, VIN=14V, Io=350mA)

Parameter	Symbol	Min.	Typ.	Max.	Unit	Conditions	Measurement circuit
Output voltage 1	VO1	7.7	8.0	8.3	V	Io=350mA	Fig.1
Output voltage 2	VO2	7.6	-	8.4	V	VIN=10.5~23V, Io=5~350mA	Fig.1
Input stability 1	Reg.l1	-	4	100	mV	VIN=10.5~25V, Io=200mA	Fig.1
Input stability 2	Reg.l2	-	1	50	mV	VIN=11~12V, Io=200mA	Fig.1
Ripple rejection ratio	R.R.	56	69	-	dB	eIN=1Vrms, f=120Hz, Io=100mA	Fig.2
Load regulation 1	Reg.L1	-	20	160	mV	Io=5~500mA	Fig.1
Load regulation 2	Reg.L2	-	10	80	mV	Io=5~200mA	Fig.1
Temperature coefficient of output voltage	Tcvo	-	-0.5	-	mV/°C	Io=5mA, Tj=0~125°C	Fig.1
Output noise voltage	Vn	-	80	-	μV	f=10Hz~100kHz	Fig.3
Minimum I/O voltage differential	Vd	-	2.0	-	V	Io=500mA	Fig.4
Bias current	Ib	-	4.5	6.0	mA	Io=0mA	Fig.5
Bias current change 1	Ib1	-	-	0.5	mA	Io=5~350mA	Fig.5
Bias current change 2	Ib2	-	-	0.8	mA	VIN=10.5~25V, Io=200mA	Fig.5
Peak output current	Io-P	-	875	-	mA	Tj=25°C	Fig.1
Output short-circuit current	Ios	-	0.4	-	A	VIN=25V	Fig.6

<BA178M09T / FP individual specifications> (unless otherwise noted, Ta=25°C, VIN=15V, Io=350mA)

Parameter	Symbol	Min.	Typ.	Max.	Unit	Conditions	Measurement circuit
Output voltage 1	VO1	8.6	9.0	9.4	V	Io=350mA	Fig.1
Output voltage 2	VO2	8.55	-	9.45	V	VIN=11.5~24V, Io=5~350mA	Fig.1
Input stability 1	Reg.l1	-	4	100	mV	VIN=11.5~26V, Io=200mA	Fig.1
Input stability 2	Reg.l2	-	2	50	mV	VIN=12~25V, Io=200mA	Fig.1
Ripple rejection ratio	R.R.	56	67	-	dB	eIN=1Vrms, f=120Hz, Io=100mA	Fig.2
Load regulation 1	Reg.L1	-	20	180	mV	Io=5~500mA	Fig.1
Load regulation 2	Reg.L2	-	10	90	mV	Io=5~200mA	Fig.1
Temperature coefficient of output voltage	Tcvo	-	-0.5	-	mV/°C	Io=5mA, Tj=0~125°C	Fig.1
Output noise voltage	Vn	-	90	-	μV	f=10Hz~100kHz	Fig.3
Minimum I/O voltage differential	Vd	-	2.0	-	V	Io=500mA	Fig.4
Bias current	Ib	-	4.5	6.0	mA	Io=0mA	Fig.5
Bias current change 1	Ib1	-	-	0.5	mA	Io=5~350mA	Fig.5
Bias current change 2	Ib2	-	-	0.8	mA	VIN=12~25V, Io=200mA	Fig.5
Peak output current	Io-P	-	875	-	mA	Tj=25°C	Fig.1
Output short-circuit current	Ios	-	0.17	-	A	VIN=30V	Fig.6

BA178M00T / BA178M00FP series

Regulator ICs

<BA178M10T / FP individual specifications> (unless otherwise noted, $T_a=25^\circ\text{C}$, $V_{IN}=16\text{V}$, $I_o=350\text{mA}$)

Parameter	Symbol	Min.	Typ.	Max.	Unit	Conditions	Measurement circuit
Output voltage 1	V_{O1}	9.6	10.0	10.4	V	$I_o=350\text{mA}$	Fig.1
Output voltage 2	V_{O2}	9.5	-	10.5	V	$V_{IN}=12.5\sim 25\text{V}$, $I_o=5\sim 350\text{mA}$	Fig.1
Input stability 1	Reg.l1	-	5	100	mV	$V_{IN}=12.5\sim 28\text{V}$, $I_o=200\text{mA}$	Fig.1
Input stability 2	Reg.l2	-	2	50	mV	$V_{IN}=14\sim 26\text{V}$, $I_o=200\text{mA}$	Fig.1
Ripple rejection ratio	R.R.	56	66	-	dB	$e_{IN}=1\text{Vrms}$, $f=120\text{Hz}$, $I_o=100\text{mA}$	Fig.2
Load regulation 1	Reg.L1	-	20	200	mV	$I_o=5\sim 500\text{mA}$	Fig.1
Load regulation 2	Reg.L2	-	10	100	mV	$I_o=5\sim 200\text{mA}$	Fig.1
Temperature coefficient of output voltage	T_{CVO}	-	-0.5	-	$\text{mV}/^\circ\text{C}$	$I_o=5\text{mA}$, $T_f=0\sim 125^\circ\text{C}$	Fig.1
Output noise voltage	V_n	-	100	-	μV	$f=10\text{Hz}\sim 100\text{kHz}$	Fig.3
Minimum I/O voltage differential	V_d	-	2.0	-	V	$I_o=500\text{mA}$	Fig.4
Bias current	I_b	-	4.5	6.0	mA	$I_o=0\text{mA}$	Fig.5
Bias current change 1	I_{b1}	-	-	0.5	mA	$I_o=5\sim 350\text{mA}$	Fig.5
Bias current change 2	I_{b2}	-	-	0.8	mA	$V_{IN}=13\sim 25\text{V}$, $I_o=200\text{mA}$	Fig.5
Peak output current	I_{o-P}	-	875	-	mA	$T_f=25^\circ\text{C}$	Fig.1
Output short-circuit current	I_{os}	-	0.17	-	A	$V_{IN}=30\text{V}$	Fig.6

<BA178M12T / FP individual specifications> (unless otherwise noted, $T_a=25^\circ\text{C}$, $V_{IN}=19\text{V}$, $I_o=350\text{mA}$)

Parameter	Symbol	Min.	Typ.	Max.	Unit	Conditions	Measurement circuit
Output voltage 1	V_{O1}	11.5	12.0	12.5	V	$I_o=350\text{mA}$	Fig.1
Output voltage 2	V_{O2}	11.4	-	12.6	V	$V_{IN}=15\sim 27\text{V}$, $I_o=5\sim 350\text{mA}$	Fig.1
Input stability 1	Reg.l1	-	5	100	mV	$V_{IN}=14.5\sim 30\text{V}$, $I_o=200\text{mA}$	Fig.1
Input stability 2	Reg.l2	-	3	50	mV	$V_{IN}=16\sim 30\text{V}$, $I_o=200\text{mA}$	Fig.1
Ripple rejection ratio	R.R.	55	63	-	dB	$e_{IN}=1\text{Vrms}$, $f=120\text{Hz}$, $I_o=100\text{mA}$	Fig.2
Load regulation 1	Reg.L1	-	20	240	mV	$I_o=5\sim 500\text{mA}$	Fig.1
Load regulation 2	Reg.L2	-	10	120	mV	$I_o=5\sim 200\text{mA}$	Fig.1
Temperature coefficient of output voltage	T_{CVO}	-	-0.5	-	$\text{mV}/^\circ\text{C}$	$I_o=5\text{mA}$, $T_f=0\sim 125^\circ\text{C}$	Fig.1
Output noise voltage	V_n	-	110	-	μV	$f=10\text{Hz}\sim 100\text{kHz}$	Fig.3
Minimum I/O voltage differential	V_d	-	2.0	-	V	$I_o=500\text{mA}$	Fig.4
Bias current	I_b	-	4.5	6.0	mA	$I_o=0\text{mA}$	Fig.5
Bias current change 1	I_{b1}	-	-	0.5	mA	$I_o=5\sim 350\text{mA}$	Fig.5
Bias current change 2	I_{b2}	-	-	0.8	mA	$V_{IN}=14.5\sim 30\text{V}$, $I_o=200\text{mA}$	Fig.5
Peak output current	I_{o-P}	-	875	-	mA	$T_f=25^\circ\text{C}$	Fig.1
Output short-circuit current	I_{os}	-	0.17	-	A	$V_{IN}=30\text{V}$	Fig.6

BA178MOOT / BA178MOOPF series

Regulator ICs

<BA178M15T / FP individual specifications> (unless otherwise noted, Ta=25°C, VIN=23V, Io=350mA)

Parameter	Symbol	Min.	Typ.	Max.	Unit	Conditions	Measurement circuit
Output voltage 1	VO1	14.4	15.0	15.6	V	Io=350mA	Fig.1
Output voltage 2	VO2	14.25	–	15.75	V	VIN=17.5~30V, Io=5~350mA	Fig.1
Input stability 1	Reg.I1	–	6	100	mV	VIN=17.5~30V, Io=200mA	Fig.1
Input stability 2	Reg.I2	–	3	50	mV	VIN=20~30V, Io=200mA	Fig.1
Ripple rejection ratio	R.R.	54	60	–	dB	eIN=1Vrms, f=120Hz, Io=100mA	Fig.2
Load regulation 1	Reg.L1	–	20	300	mV	Io=5~500mA	Fig.1
Load regulation 2	Reg.L2	–	10	150	mV	Io=5~200mA	Fig.1
Temperature coefficient of output voltage	TCVO	–	–0.6	–	mV/°C	Io=5mA, Tj=0~125°C	Fig.1
Output noise voltage	Vn	–	130	–	μV	f=10Hz~100kHz	Fig.3
Minimum I/O voltage differential	Vd	–	2.0	–	V	Io=500mA	Fig.4
Bias current	Ib	–	4.5	6.0	mA	Io=0mA	Fig.5
Bias current change 1	Ib1	–	–	0.5	mA	Io=5~350mA	Fig.5
Bias current change 2	Ib2	–	–	0.8	mA	VIN=17.5~30V, Io=200mA	Fig.5
Peak output current	Io-P	–	875	–	mA	Tj=25°C	Fig.1
Output short-circuit current	Ios	–	0.17	–	A	VIN=30V	Fig.6

<BA178M18T / FP individual specifications> (unless otherwise noted, Ta=25°C, VIN=27V, Io=350mA)

Parameter	Symbol	Min.	Typ.	Max.	Unit	Conditions	Measurement circuit
Output voltage 1	VO1	17.3	18.0	18.7	V	Io=350mA	Fig.1
Output voltage 2	VO2	17.1	–	18.9	V	VIN=21~33V, Io=5~350mA	Fig.1
Input stability 1	Reg.I1	–	7	100	mV	VIN=21~33V, Io=200mA	Fig.1
Input stability 2	Reg.I2	–	3	50	mV	VIN=24~33V, Io=200mA	Fig.1
Ripple rejection ratio	R.R.	53	58	–	dB	eIN=1Vrms, f=120Hz, Io=100mA	Fig.2
Load regulation 1	Reg.L1	–	20	360	mV	Io=5~500mA	Fig.1
Load regulation 2	Reg.L2	–	10	180	mV	Io=5~200mA	Fig.1
Temperature coefficient of output voltage	TCVO	–	–0.6	–	mV/°C	Io=5mA, Tj=0~125°C	Fig.1
Output noise voltage	Vn	–	140	–	μV	f=10Hz~100kHz	Fig.3
Minimum I/O voltage differential	Vd	–	2.0	–	V	Io=500mA	Fig.4
Bias current	Ib	–	4.5	6.0	mA	Io=0mA	Fig.5
Bias current change 1	Ib1	–	–	0.5	mA	Io=5~350mA	Fig.5
Bias current change 2	Ib2	–	–	0.8	mA	VIN=21~33V, Io=200mA	Fig.5
Peak output current	Io-P	–	875	–	mA	Tj=25°C	Fig.1
Output short-circuit current	Ios	–	0.17	–	A	VIN=30V	Fig.6

BA178MOOT / BA178MOOFP series

Regulator ICs

<BA178M20T / FP individual specifications> (unless otherwise noted, Ta=25°C, VIN=29V, Io=350mA)

Parameter	Symbol	Min.	Typ.	Max.	Unit	Conditions	Measurement circuit
Output voltage 1	VO1	19.2	20.0	20.8	V	Io=350mA	Fig.1
Output voltage 2	VO2	19.0	–	21.0	V	VIN=23~33V, Io=5~350mA	Fig.1
Input stability 1	Reg.l1	–	8	100	mV	VIN=23~33V, Io=200mA	Fig.1
Input stability 2	Reg.l2	–	4	50	mV	VIN=24~33V, Io=200mA	Fig.1
Ripple rejection ratio	R.R.	53	58	–	dB	eIN=1Vrms, f=120Hz, Io=100mA	Fig.2
Load regulation 1	Reg.L1	–	20	400	mV	Io=5~500mA	Fig.1
Load regulation 2	Reg.L2	–	10	200	mV	Io=5~200mA	Fig.1
Temperature coefficient of output voltage	Tcvo	–	–0.7	–	mV/°C	Io=5mA, Tj=0~125°C	Fig.1
Output noise voltage	Vn	–	150	–	μV	f=10Hz~100kHz	Fig.3
Mnimum I/O voltage differential	Vd	–	2.0	–	V	Io=500mA	Fig.4
Bias current	Ib	–	4.5	6.0	mA	Io=0mA	Fig.5
Bias current change 1	Ib1	–	–	0.5	mA	Io=5~350mA	Fig.5
Bias current change 2	Ib2	–	–	0.8	mA	VIN=23~33V, Io=200mA	Fig.5
Peak output current	Io-P	–	875	–	mA	Tj=25°C	Fig.1
Output short-circuit current	Ios	–	0.17	–	A	VIN=30V	Fig.6

<BA178M24T / FP individual specifications> (unless otherwise noted, Ta=25°C, VIN=33V, Io=350mA)

Parameter	Symbol	Min.	Typ.	Max.	Unit	Conditions	Measurement circuit
Output voltage 1	VO1	23.0	24.0	25.0	V	Io=350mA	Fig.1
Output voltage 2	VO2	22.8	–	25.2	V	VIN=27~33V, Io=5~350mA	Fig.1
Input stability 1	Reg.l1	–	10	100	mV	VIN=27~33V, Io=200mA	Fig.1
Input stability 2	Reg.l2	–	5	50	mV	VIN=28~33V, Io=200mA	Fig.1
Ripple rejection ratio	R.R.	50	55	–	dB	eIN=1Vrms, f=120Hz, Io=100mA	Fig.2
Load regulation 1	Reg.L1	–	20	480	mV	Io=5~500mA	Fig.1
Load regulation 2	Reg.L2	–	10	240	mV	Io=5~200mA	Fig.1
Temperature coefficient of output voltage	Tcvo	–	–0.7	–	mV/°C	Io=5mA, Tj=0~125°C	Fig.1
Output noise voltage	Vn	–	170	–	μV	f=10Hz~100kHz	Fig.3
Minimum I/O voltage differential	Vd	–	2.0	–	V	Io=500mA	Fig.4
Bias current	Ib	–	4.8	6.0	mA	Io=0mA	Fig.5
Bias current change 1	Ib1	–	–	0.5	mA	Io=5~350mA	Fig.5
Bias current change 2	Ib2	–	–	0.8	mA	VIN=27~33V, Io=200mA	Fig.5
Peak output current	Io-P	–	875	–	mA	Tj=25°C	Fig.1
Output short-circuit current	Ios	–	0.17	–	A	VIN=30V	Fig.6

BA178MOOT / BA178MOOPF series

Regulator ICs

●Measurement circuits

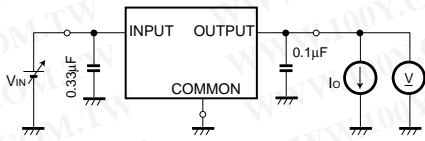
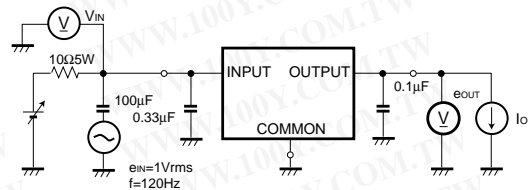


Fig. 1 Measurement circuit for output voltage, input stability, load regulation, temperature coefficient of output voltage



$$\text{Ripple rejection ratio R.R.} = 20 \log \left(\frac{|e_{IN}|}{|e_{OUT}|} \right)$$

Fig. 2 Measurement circuit for ripple rejection ratio

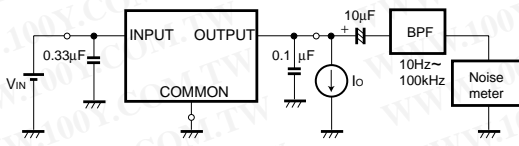


Fig. 3 Measurement circuit for output noise voltage

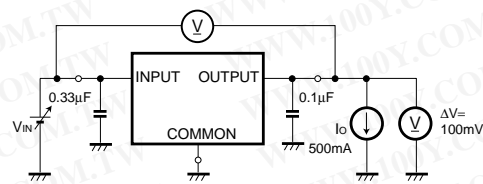


Fig. 4 Measurement circuit for Minimum I/O voltage differential

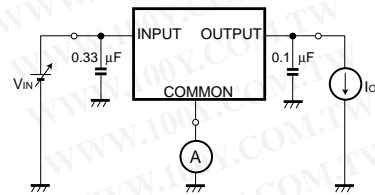


Fig. 5 Measurement circuit for bias current and bias current change

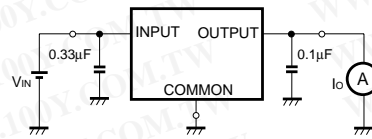


Fig. 6 Measurement circuit for output short-circuit current

●Electrical characteristic curves

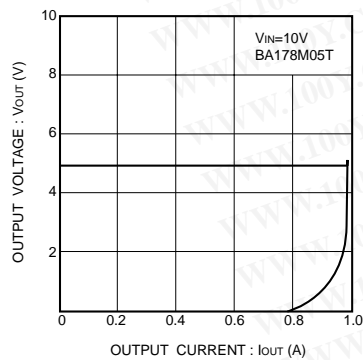


Fig. 7 Current limit characteristics

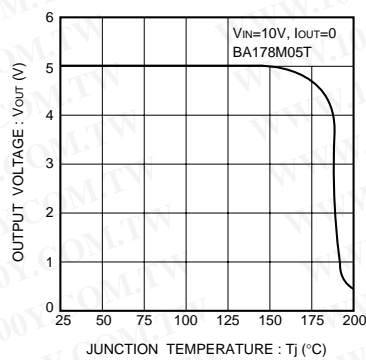


Fig. 8 Thermal cutoff circuit characteristics

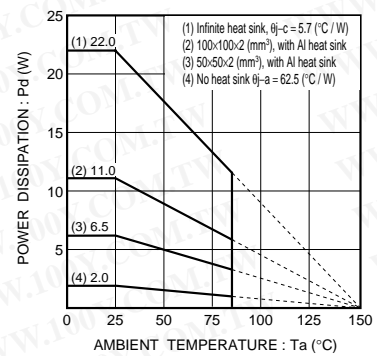


Fig.9 Thermal derating characteristic (TO220FP)

BA178MOOT / BA178MOOFP series

Regulator ICs

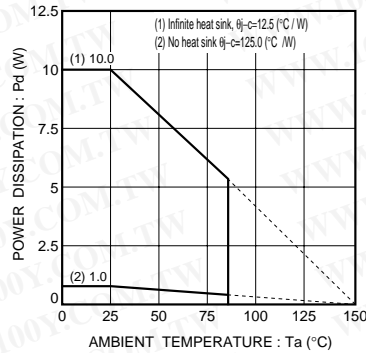


Fig.10 Thermal derating characteristic (TO252-3)

● Operation notes

- (1) Although the circuit examples included in this handbook are highly recommendable for general use, you should thoroughly familiar yourself with the circuit characteristics as they relate to your own conditions. If you intend to change the number of external circuits, leave an ample margin, taking into account discrepancies in both static and dynamic characteristics of external parts and Rohm ICs. In addition, please be advised that Rohm cannot provide complete assurance regarding patent rights.
- (2) Operating power supply voltage
When operating within the normal voltage range and within the ambient operating temperature range, most circuit functions are guaranteed. The rated values cannot be guaranteed for the electrical characteristics, but there are no sudden changes of the characteristics within these ranges.
- (3) Power dissipation
Heat attenuation characteristics are noted on a separate page and can be used as a guide in judging power dissipation.
If these ICs are used in such a way that the allowable power dissipation level is exceeded, an increase in the chip temperature could cause a reduction in the current capability or could otherwise adversely affect the performance of the IC. Make sure a sufficient margin is allowed so that the allowable power dissipation value is not exceeded.
- (4) Preventing oscillation in output and using bypass capacitors
Always use a capacitor between the output pins and the GND to prevent fluctuation in the output and to prevent oscillation between the output pins and the GND of the application's input (V_{IN} μF should be used.)
Changes in the temperature and other factors can cause the value of the capacitor to change, and this can cause oscillation. To prevent this, we recommend using a tantalum capacitor which has minimal changes in nominal capacitance.
Also, we recommend adding a bypass capacitor of about 0.33 μF between the input pin and the GND, as close to the pin as possible.
- (5) Thermal overload circuit
A built-in thermal overload circuit prevents damage from overheating. When the thermal circuit is activated, the various outputs are in the OFF state. When the temperature drops back to a constant level, the circuit is restored.
- (6) Internal circuits could be damaged if there are modes in which the electric potential of the application's input (V_{IN}) and GND are the opposite of the electric potential of the various outputs. Use of a diode or other such bypass path is recommended.
- (7) Although the manufacture of this product includes rigorous quality assurance procedures, the product may be damaged if absolute maximum ratings for voltage or operating temperature are exceeded. If damage has occurred, special modes (such as short circuit mode or open circuit mode) cannot be specified. If it is possible that such special modes may be needed, please consider using a fuse or some other mechanical safety measure.
- (8) When used within a strong magnetic field, be aware that there is a slight possibility of malfunction.

BA178MOOT / BA178MOOFP series

Regulator ICs

●External dimensions (Units : mm)

