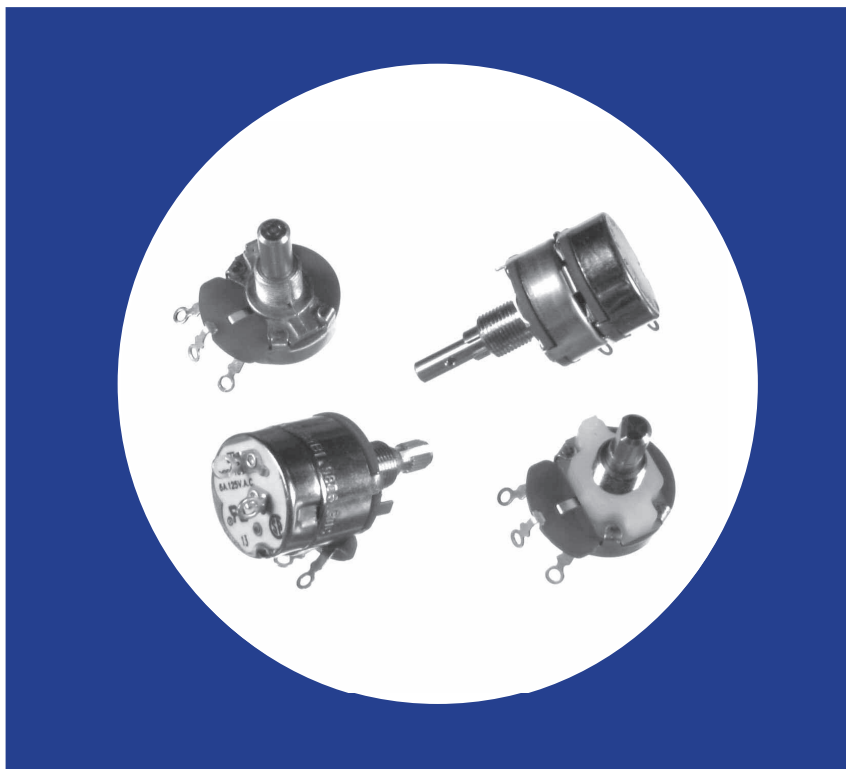


Industrial 15/16" (24mm) Diameter, 5-Watt, Wirewound Variable Resistors

Features

- Dust-proof construction
- Water splash proof construction available
- 5-watt power rating
- Superior resistance stability in temperature and environment change
- Tandem constructions available
- Bushing or twist tab mounting
- Available with pull-push and rotary power switches
- Excellent linearity performance
- RoHS compliant



Electrical and Mechanical Specifications

Resistance Range

Linear : 1 ohm through 25K ohms
Audio : 20 ohms through 10K ohms

Resistance Tolerance

Standard : $\pm 10\%$
Special : Tighter tolerance available in most resistance values

Power Rating

5 watts @25°C, 4 watts @ 55°C, derated to no load at 105°C, linear taper
(Derating required on two section counts.)

Voltage Rating

Bushing to Terminals:
High pot test, one minute -- 1,000 VAC
Operating maximum -- 500 VDC

Across End Terminals:
350 VDC maximum, load not to exceed wattage rating.

Resistance Tapers

Standard: Linear or 20% audio
Special: Consult CTS

Linearity

Standard: 3% linearity
Special: Consult CTS

Power Switches

Rotary Pole-SPST, DPST & SPDT
Pull-Push Pole-SPST (Pull-ON, Push-OFF)

Rotational Angle

Mechanical Rotation:
Without switch: $300^\circ \pm 5^\circ$
With switch: $300^\circ \pm 5^\circ$

Effective Rotation:
Without switch: $280^\circ \pm 5^\circ$
With switch: $265^\circ \pm 5^\circ$

Rotational Torque:

Standard: 3/4 to 6 in. oz (54 - 432 gf-cm)
Special: higher torque models available, consult CTS

Operating Temperature

-30°C to +85°C

(continued on next page)

Available for round, flatted, knurled, or slot metal shaft
Diameter: 6.35mm (.250")
Consult CTS for custom-made metal and economic plastic shaft

Diameter: EIA standard 3/8-32 UNEF-2A thread
Standard length: 9.53mm (.375") or 6.35mm (.250")
Consult CTS for custom-made metal and economic plastic bushing

Standard: Left lug with terminals facing inward
Available: No lug, right lug or two lugs with terminals facing inward

Standard: .438" (11.1mm)
Special: .531" (13.5mm) available

Terminals accepting push-on connectors available.
Straight or concentric tandem constructions.

Can be combined with 450 series, 15/16" (24mm) diameter, to make any combination of straight or concentric tandem constructions with or without switch.
Long life constructions available.

This construction provides an extended life of 50K and 100K cycles. Consult CTS for details.

MTG. SURFACE

3/8-32 UNEF-2A

11.9
.469

23.8
.937

19.8
.780

11.1
.437

3.18
.125

22.2
.875

MAX.

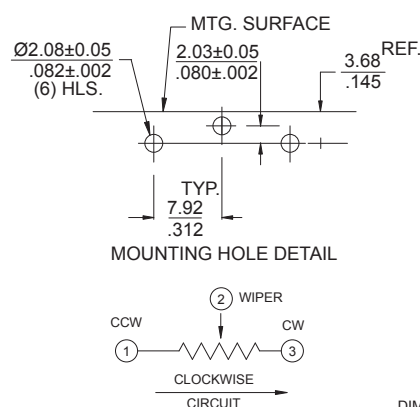
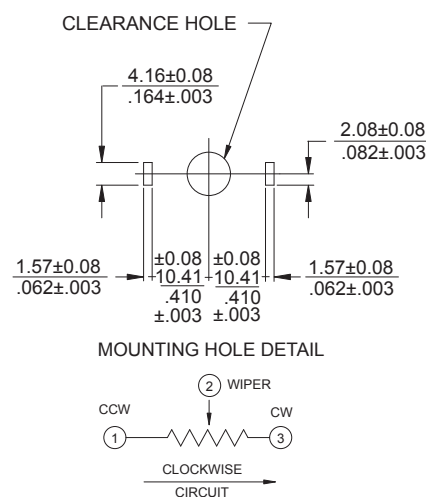
MAX.

1 2 3

TERMINAL (3) HOLES Ø2.18 / .086

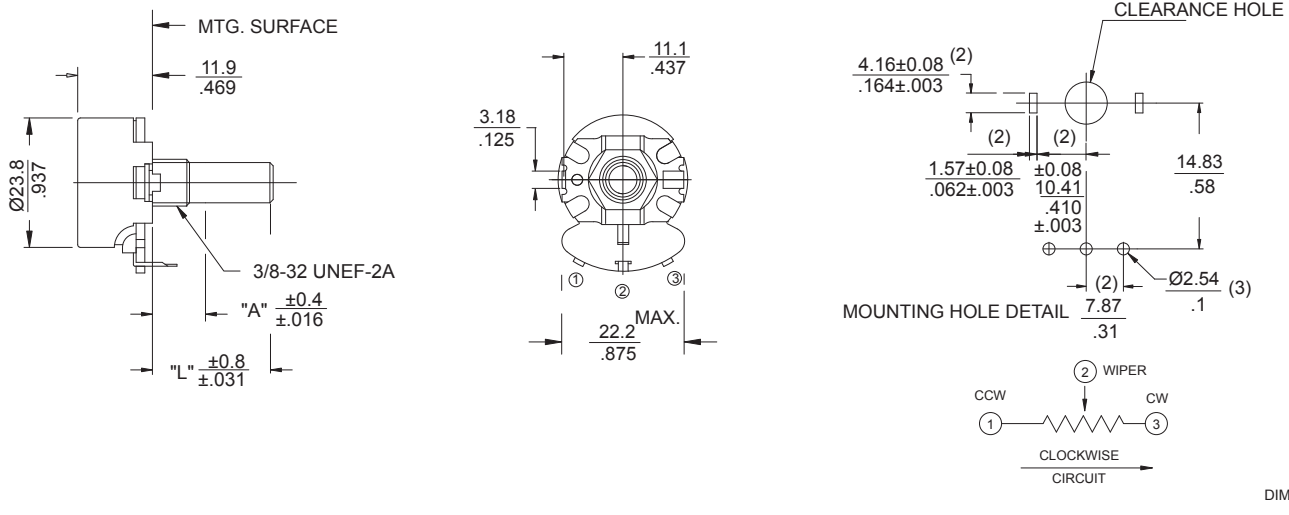
"A" ± 0.4
 ± 0.016

"L" ± 0.8
 ± 0.031

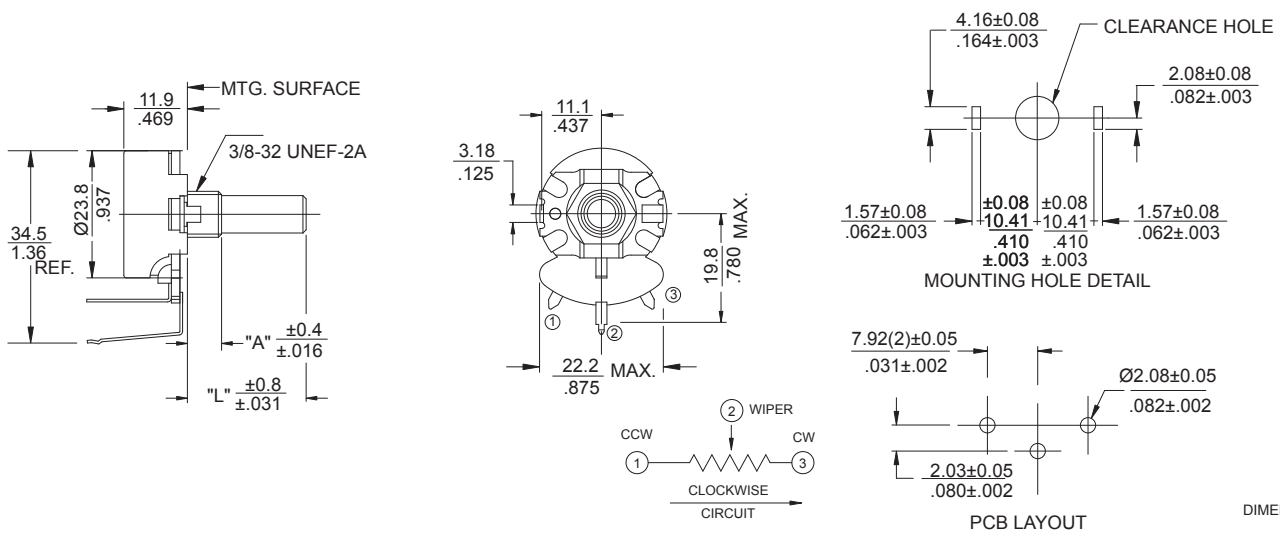


2 - 4
CTS Electronic Components

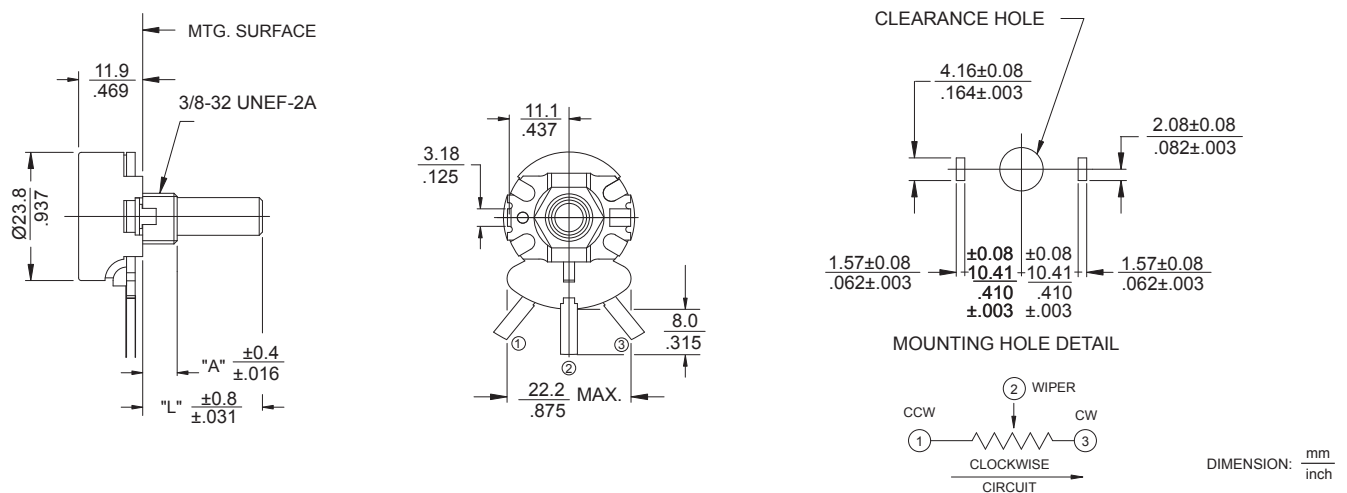
U026 Metal Shaft, Bushing Mounting, Printed Circuit Type “U” Formed Terminals

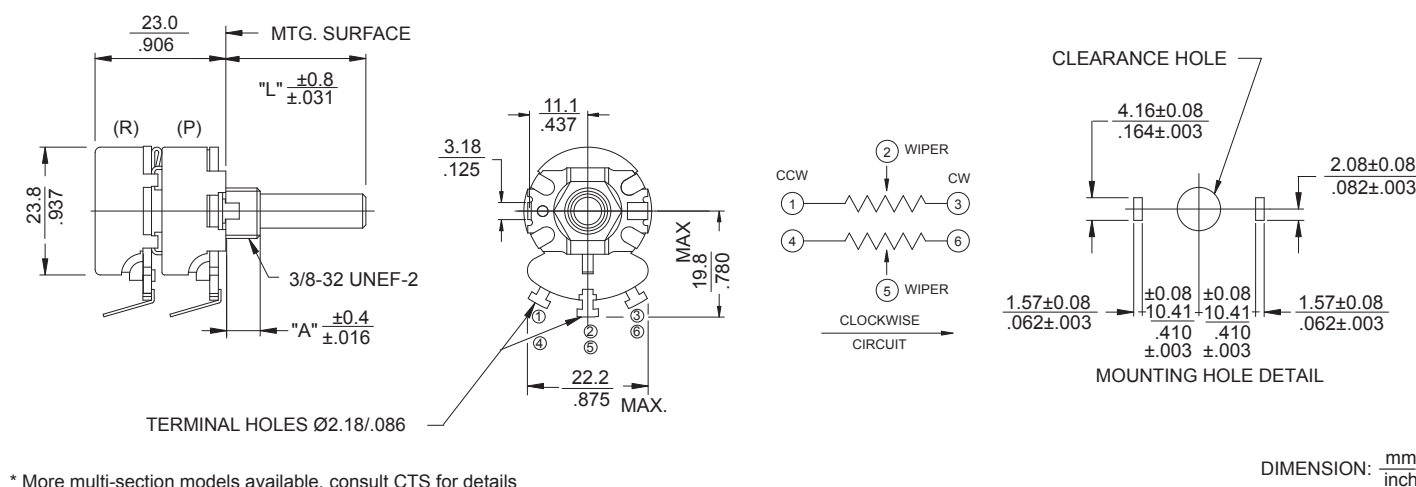
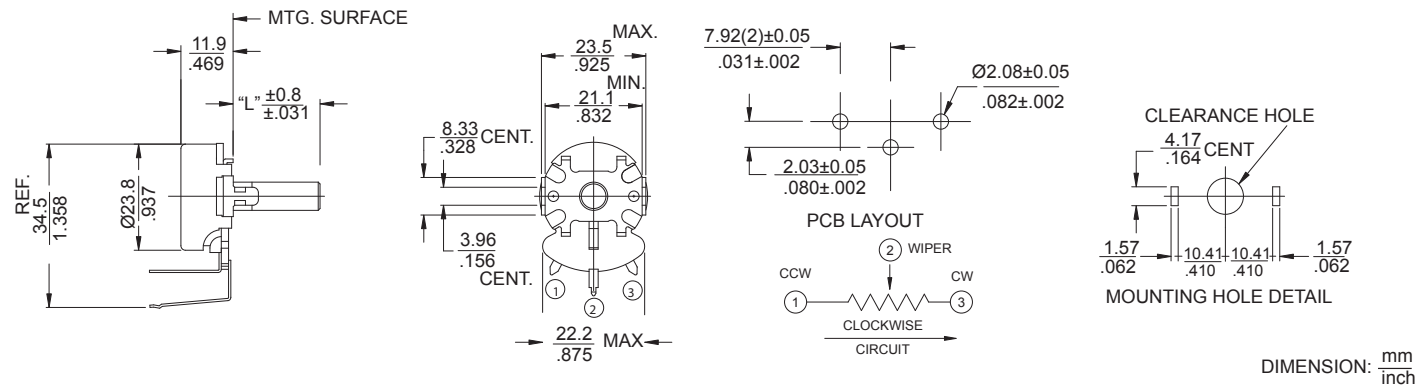


V026 Metal Shaft, Bushing Mounting, Printed Circuit Type “V” Formed Terminals



S026 Metal Shaft, Bushing Mounting, Faston Type “S” Formed Terminals





Ordering Information

026
TERMINAL STYLE
T - SOLDER LUG
X - PC .687"(17.5mm)
Y - PC .867"(22.0mm)
U - FORMED TO FRONT
V - FORMED TO REAR
S - FASTON

T

2
METAL MOUNTING STYLE "A"
BUSHING LENGTH: 1/8" INCREMENTS
EXAMPLES:
2 - .250"(6.35mm)
3 - .375"(9.53mm)
8 - 1.000"(25.4mm)
1 - TWIST TAB MOUNT
A - .250"(6.35mm) DIECAST
B - .375"(9.53mm) DIECAST

20
RESISTANCE CODE EXAMPLES
CODE RESISTANCE
5A0 5 OHMS
501 500 OHMS
102 1K
252 2.5K
502 5K
103 10K
253 25K

R
SHAFT TRIM
R - ROUND
F - FLATTED .375"X.156" (9.53mmX4.0mm)
K - KNURLED EIA S148 24 TEETH
S - SD SLOT .063" DEEP X.047" WIDE (1.6mmX1.2mm)

103

B
RESIST TOL
A - $\pm 10\%$
B - $\pm 20\%$
D - $\pm 5\%$

1
TAPER
1 - LINEAR
2 - 20%AUD
3 - 20%CCW AUD

A
SPECIALS
1 - LOCATING LUG LEFT SIDE
2 - LOCATING LUG RIGHT SIDE
3 - NO LOCATING LUG
5 - LOCATING LUG BOTH SIDE

1

METAL SHAFT LENGTH "L"
FROM MOUNTING SURFACE 1/32" INCREMENTS
EXAMPLES:
20 - .625"(6.35mm)
24 - .750"(19.5mm)
28 - .875"(22.2mm)
32 - 1.000"(25.4mm)
* CONSULT CTS FOR SPECIAL REQUIREMENTS

SWITCHES	FUNCTION	CTS TYPE	CURRENT RATING
A - NONE			
B - SPST	ROTARY	TGC	6AMP@125VAC
C - DPST	ROTARY	027	3AMP@125VAC 1AMP@250VAC
D - SPDT	ROTARY	028	3AMP@125VAC
E - SPST	PULL-PUSH	FR-K	3AMP@125VAC
F - SPST	ROTARY	FR-GC	3AMP@125VAC 1AMP@250VAC/DC

* CONSULT CTS FOR DETAILS