



勝特力材料 886-3-5753170  
 勝特力电子(上海) 86-21-54151736  
 勝特力电子(深圳) 86-755-83298787  
 Http://www.100y.com.tw

# BE SERIES FUSE CONNECTOR FILTERS



## INTRODUCTIONS

1. Designed as a general purpose filter with a fuse holder providing effective EMI suppression for both common and differential mode noise.
2. All part numbers are UL recognized, CSA certified and VDE approved.

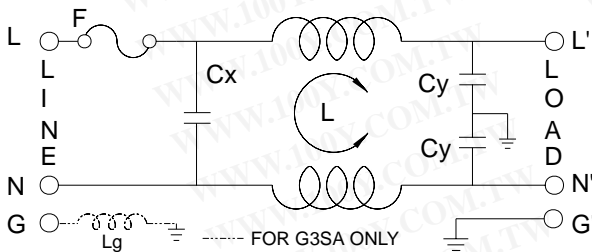
## COMPONENTS

| PART NO.  | Cx (uF) | L (mH) | Cy (pF) | R (Ohm) |
|-----------|---------|--------|---------|---------|
| 02BEEG3H  | 0.1     | 2.4    | 3300    | -       |
| 04BEEG3H  |         | 2.8    |         |         |
| 04BEEG3S  | 0.015   |        |         |         |
| 04BEEG3SA | 0.1     | 0.7    |         |         |
| 06BEEG3H  | 0.1     | 1.3    | 3300    | -       |

## MINIMUM INSERTION LOSS IN dB

| COMMON MODE (L-G) IN 50 OHM SYSTEM       |               |     |     |     |    |    |
|--|---------------|-----|-----|-----|----|----|
| CURRENT RATING                           | FREQUENCY-MHz |     |     |     |    |    |
|  | .15           | .50 | 1.0 | 5.0 | 10 | 30 |
| 2A                                       | 25            | 35  | 40  | 55  | 55 | 55 |
| 4A                                       | 26            | 30  | 40  | 50  | 55 | 45 |
| 4A(S)                                    | 26            | 30  | 40  | 50  | 55 | 45 |
| 6A                                       | 20            | 30  | 35  | 50  | 55 | 45 |
| DIFFERENTIAL MODE (L-L) IN 50 OHM SYSTEM |               |     |     |     |    |    |
| 2A                                       | 6             | 15  | 25  | 40  | 45 | 45 |
| 4A                                       | 6             | 15  | 25  | 40  | 45 | 45 |
| 4A(S)                                    | 1             | 5   | 12  | 30  | 40 | 40 |
| 6A                                       | 6             | 15  | 20  | 40  | 45 | 45 |

## ELECTRICAL SCHEMATIC



## MECHANICAL CONSTRUCTION



EG3H, EG3S

## SPECIFICATIONS

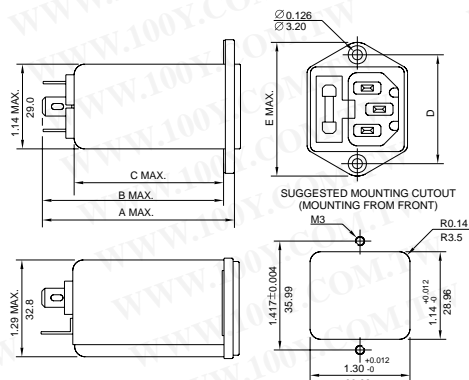
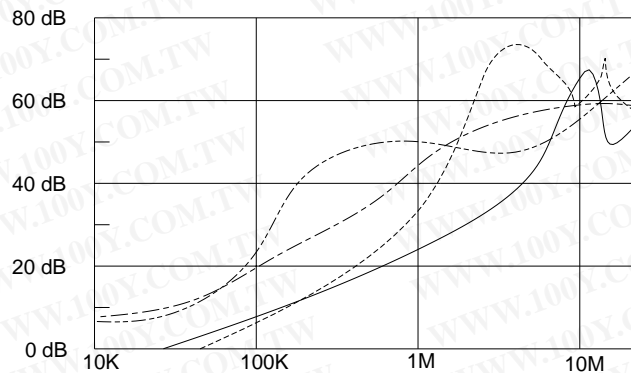
1. Maximum leakage current each line-to-ground @ 115VAC 60Hz: 0.25mA @ 250VAC 50Hz: 0.45mA
2. Hipot rating (one minute) line-to-ground: 2250VDC line-to-line: 1450VDC
3. Operating frequency: 50/60Hz
4. Rated voltage: 115/250VAC

## SERIES DIMENSIONS

| DELTA PART NO. | STYLE | DIMENSIONS IN INCHES/mm |              |               |                |              |
|----------------|-------|-------------------------|--------------|---------------|----------------|--------------|
|                |       | A                       | B            | C             | D              | E            |
| 02BEEG3H       | EG3H  | 2.56<br>65.0            | 2.42<br>61.5 | 2.00<br>50.8  | 1.417<br>35.99 | 1.75<br>44.5 |
| 04BEEG3H       | EG3H  |                         |              |               |                |              |
| 06BEEG3H       | EG3H  |                         |              |               |                |              |
| 04BEEG3S/A     | EG3S  | 2.25<br>57.2            | 2.1<br>53.3  | 1.65<br>41.91 |                |              |

## INSERTION LOSS (TYPICAL)

04BEEG3H ----- COMMON MODE ----- DIFF. MODE  
 06BEEG3H ----- COMMON MODE ----- DIFF. MODE



UNIT: INCH  
mm



勝特力材料 886-3-5753170  
 勝特力电子(上海) 86-21-54151736  
 勝特力电子(深圳) 86-755-83298787  
 Http://www.100y.com.tw

# BE SERIES SWITCH CONNECTOR FILTERS



## INTRODUCTIONS

1. Designed as a general purpose filter with a switch effective EMI suppression for both common and differential mode noise.
2. With optional resistor and 3300pF/1000pF

## COMPONENTS

| PART NO.        | Cx (uF) | L (mH) | Cy (pF) | R (MΩ) | Lg (mH) |   |
|-----------------|---------|--------|---------|--------|---------|---|
| 03BEEG3G/NG3G   | 0.1     | 2.4    | 2200    | 1.0    | -       |   |
| 03BEEG3GM/NG3GM |         |        | -       |        | -       |   |
| 03BEEG3GA/NG3GA |         |        | 2200    |        | 0.12    |   |
| 06BEEG3G/NG3G   |         | 0.8    | 2200    |        | -       | - |
| 06BEEG3GM/NG3GM |         |        | -       |        | -       | - |
| 06BEEG3GA/NG3GA |         |        | 2200    |        | 0.12    | - |
| 10BEEG3G/NG3G   | 0.3     | -      | 2200    | -      | -       |   |
| 10BEEG3GM/NG3GM |         |        | -       |        | -       | - |
| 10BEEG3GA/NG3GA |         |        | 2200    |        | 0.12    | - |

A: with ground choke  
 M: medical type

## MINIMUM INSERTION LOSS IN dB

| COMMON MODE (L-G) IN 50 OHM SYSTEM |               |     |     |     |    |    |
|------------------------------------|---------------|-----|-----|-----|----|----|
| CURRENT RATING                     | FREQUENCY-MHz |     |     |     |    |    |
|                                    | .15           | .50 | 1.0 | 5.0 | 10 | 30 |
| 3A (G) (A)                         | 20            | 30  | 35  | 35  | 35 | 35 |
| 3A (M)                             | 20            | 30  | 35  | 20  | 15 | 5  |
| 6A (G) (A)                         | 10            | 20  | 25  | 35  | 40 | 35 |
| 6A (M)                             | 10            | 20  | 20  | 20  | 15 | 10 |
| 10A (G) (A)                        | 5             | 10  | 20  | 30  | 35 | 35 |
| 10A (M)                            | 5             | 10  | 10  | 15  | 15 | 10 |

| DIFFERENTIAL MODE (L-L) IN 50 OHM SYSTEM |               |     |     |     |    |    |
|--|---------------|-----|-----|-----|----|----|
| CURRENT RATING                           | FREQUENCY-MHz |     |     |     |    |    |
|  | .15           | .50 | 1.0 | 5.0 | 10 | 30 |
| 3A (G) (A)                               | 4             | 10  | 20  | 35  | 35 | 40 |
| 3A (M)                                   | 5             | 15  | 20  | 30  | 30 | 20 |
| 6A (G) (A)                               | 4             | 10  | 10  | 35  | 35 | 40 |
| 6A (M)                                   | 4             | 10  | 15  | 25  | 25 | 20 |
| 10A (G) (A)                              | 5             | 10  | 20  | 30  | 35 | 35 |
| 10A (M)                                  | 4             | 10  | 10  | 20  | 20 | 20 |

## MECHANICAL CONSTRUCTION



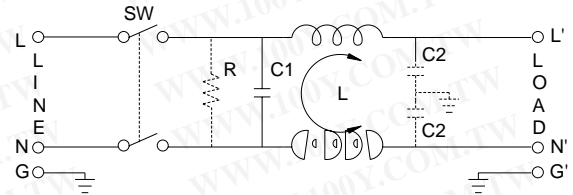
BENG3G

BEEG3G

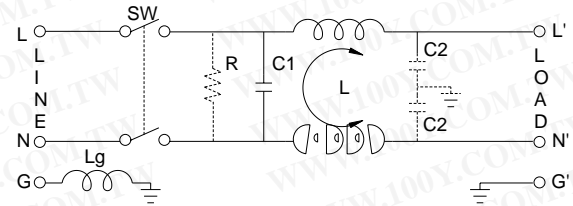
## SPECIFICATIONS

1. Maximum leakage current each line-to-ground @ 115VAC 60Hz: 0.25mA @ 250VAC 50Hz: 0.45mA
2. Hipot rating (one minute) line-to-ground: 2250VDC line-to-line: 1450VDC
3. Operating frequency: 50/60Hz
4. Rated voltage: 115/250VAC

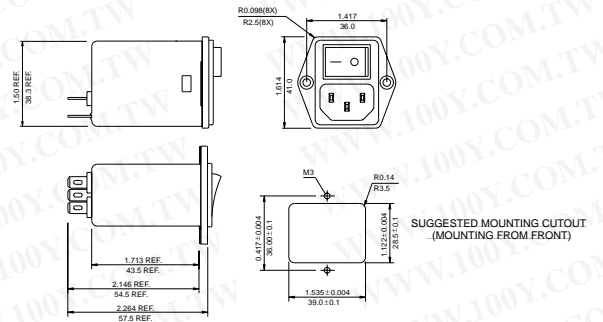
## ELECTRICAL SCHEMATIC



R: OPTION

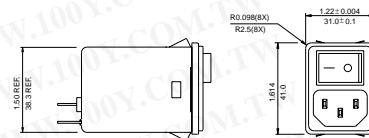


3GA ONLY



SUGGESTED MOUNTING CUTOUT (MOUNTING FROM FRONT)

BEEG3G



SUGGESTED MOUNTING CUTOUT (MOUNTING FROM FRONT)

Suggested thickness of mounting panel is from 0.04(1.0) to 0.63(1.6) inch(mm) of mounting cutout

BENG3G

UNIT: INCH mm