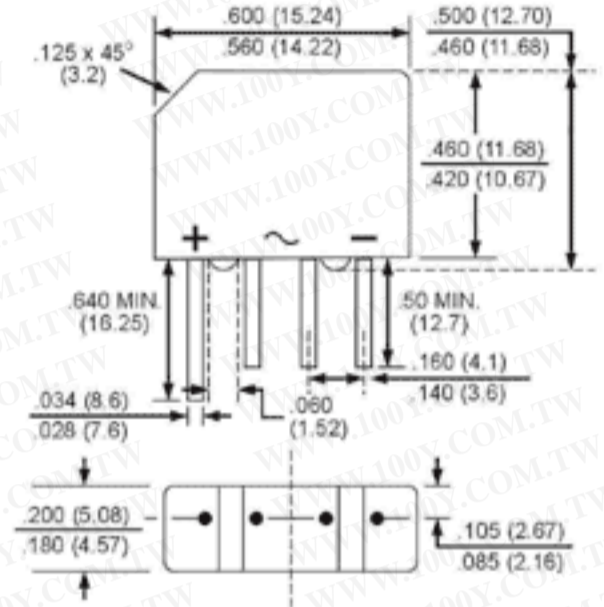


**SILICON BRIDGE RECTIFIERS**
**REVERSE VOLTAGE - 50 to 1000 Volts**  
**FORWARD CURRENT - 1.5 Amperes**
**FEATURES**

- Surge overload rating - 50 amperes peak
- Ideal for printed circuit board
- Plastic material has Underwriters Laboratory Flammability Classification 94V-0
- Mounting Position: Any

勝特力材料 886-3-5753170  
 勝特力电子(上海) 86-21-54151736  
 勝特力电子(深圳) 86-755-83298787  
[Http://www.100y.com.tw](http://www.100y.com.tw)


**MAXIMUM RATINGS AND ELECTRICAL CHARACTERISTICS**

Rating at 25°C ambient temperature unless otherwise specified.  
 Resistive or inductive load, 60Hz.  
 For capacitive load, derate current by 20%

CHARACTERISTICS	KBP005	KBP01	KBP02	KBP04	KBP06	KBP08	KBP10	UNIT
Maximum Recurrent Peak Reverse Voltage	50	100	200	400	600	800	1000	V
Maximum RMS Bridge Input Voltage	35	70	140	280	420	560	700	V
Maximum DC Blocking Voltage	50	100	200	400	600	800	1000	V
Maximum Average Forward Rectified Output Current @ $T_A=50^\circ\text{C}$	1.5							A
Peak Forward Surge Current, 8.3ms single half sine-wave super imposed on rated load	50							A
Maximum Forward Voltage Drop per Bridge Element at 1.5A Peak	1.0							V
Maximum Reverse Current at Rated DC Blocking Voltage per Element	10.0							$\mu\text{A}$
Maximum Reverse Current at Rated DC Blocking Voltage per Element $T_A=100^\circ\text{C}$	1.0							mA
Operating Temperature Range $T_J$	-40 to +125							$^\circ\text{C}$
Storage Temperature Range $T_A$	-40 to +125							$^\circ\text{C}$