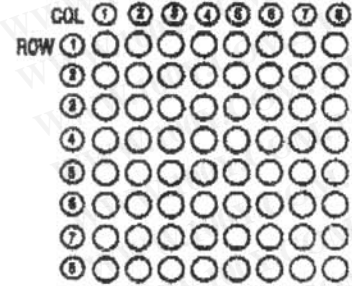
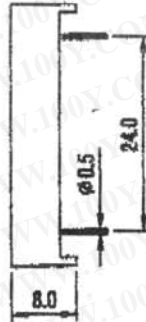
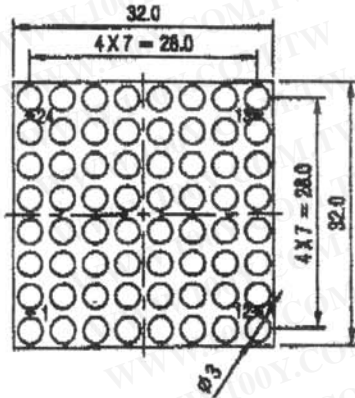
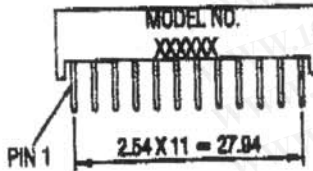


JOINSCAN LEDs

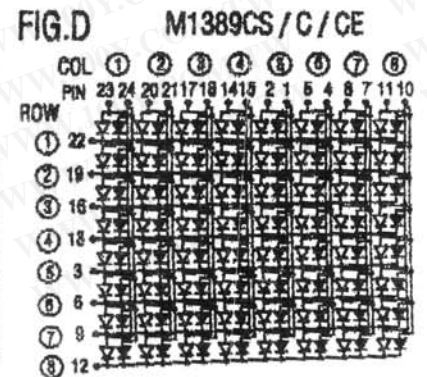
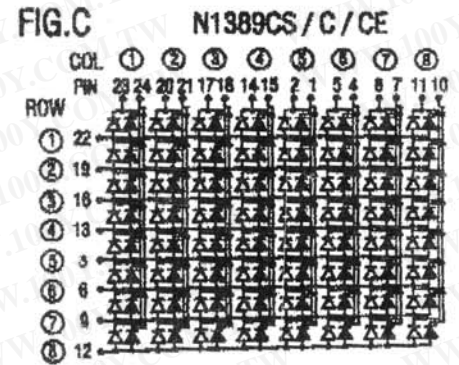
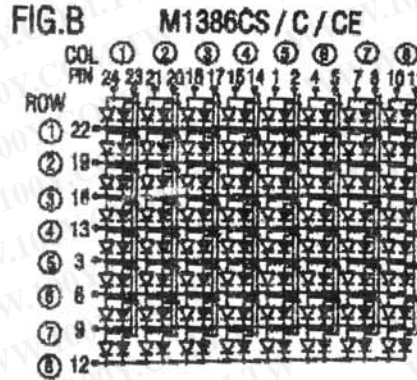
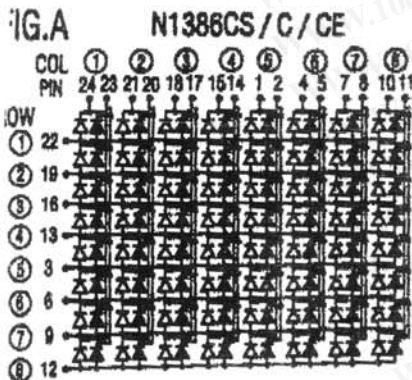
3mm 8 X 8 A2 1.22 INCH 8 X 8 DOT MATRIX MUTI - COLOR



FACE INK & LENS COLDE	
GW	GRAY FACE WHITE LENS
BW	BLACK FACE WHITE LENS
GC	GRAY FACE CLEAR LENS
BC	BLACK FACE CLEAR LENS



UNIT : mm
 TOLERANCE : ±0.2mm
 ↖ = GREEN
 ↗ = RED



PIN FUNCTION	COLOR	COLUMN CATHODE		COLUMN ANODE		WAVE LENGTH	IR MAX (mW)	VF (V)	LUMINOUS INTENSITY
		FIG.A	FIG.C	FIG.B	FIG.D				
Emitting	GREEN	model no.	model no.	model no.	model no.	(nm)	VR=5V	IF=20mA	IF=20mA
GaP	GREEN	N1386CS	N1389CS	M1386CS	M1389CS	570	100	2.2	4.0mcd
GaAlAs	RED					645	100	1.8	6.0mcd
GaP	GREEN	N1386C	N1389C	M1386C	M1389C	570	100	2.2	4.0mcd
GaP/GaAsP	ORANGE RED					628	100	2.0	3.5mcd
GaP	GREEN	N1386CE	N1389CE	M1386CE	M1389CE	570	100	2.2	4.0mcd
GaP/GaAsP	HI-EFF RED					635	100	2.0	6.0mcd

Remark :

1. Typical forward current 10 ~ 20 mA , MAXimum forward current 25 mA
2. Solder Temperature 1.6 mm Below Seating plane less 5 seconds at 260°C +5°C -30°C
3. Peak Forward current Per Dice , Duty cycle 1/10 , 10KHZ , MAXimum 120 mA
4. Operating Temperature From -25°C to 85°C
5. Blue color , pure green color and white color chip are static sensitive devices

Amended Date :
 2003 / MAY / 26 / 09 : 00
 B