

勝特力材料 886-3-5753170
 勝特力电子(上海) 86-21-54151736
 勝特力电子(深圳) 86-755-83298787
[Http://www.100y.com.tw](http://www.100y.com.tw)

KA SERIES:KA20C02A,KA20C04A

Type:

Name:KA SERIES:KA20C02A,KA20C04A



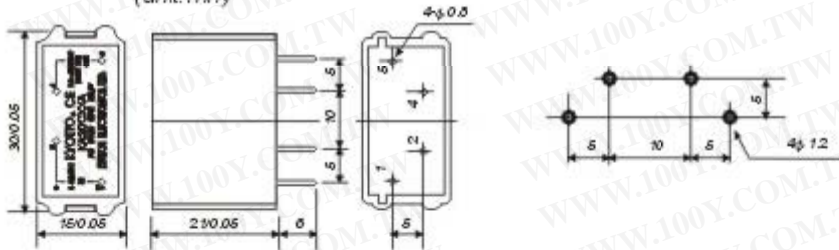
Description:

SPECIFICATIONS

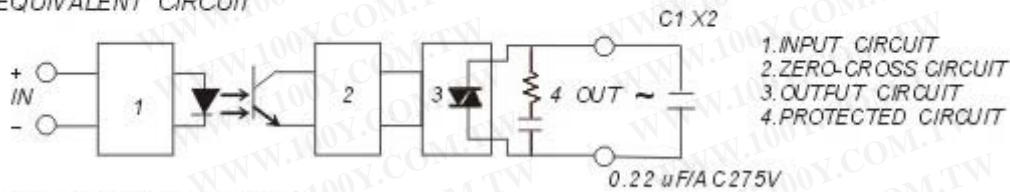
| MODEL NO. | CONTROL VOLTAGE RANGE | MUST TURN OFF VOLTAGE | INPUT IMPEDANCE | MAX LOAD CURRENT | LOAD VOLTAGE RANGE | MIN ELOCAING VOLTAGE | MAX OFF-STATE LEAKAGE | FREQUENCY RANGE | MAX 1-CYCLE PEAK SURGE |
|-----------|-----------------------|-----------------------|-----------------|------------------|--------------------|----------------------|-----------------------|-----------------|------------------------|
| KA20C02A | 3 TO 32VDC | MAX 10VDC | 1.8kΩ | 2A | 24-200VAC | 00VAC | LESS 3mA | 47-70Hz | 30A |
| KA20C04A | 3 TO 32VDC | MAX 10VDC | 1.8kΩ | 4A | 24-200VAC | 00VAC | LESS 3mA | 47-70Hz | 30A |

| MODEL NO. | MAX OFF STATE d.t | MAX ON-STATE VOLTAGE DROP | ISOLATE IMPEDENCE | INDUCTIVE LOAD SWITCHING CAPABILITY | INDUCTIVE THROUGH CAPABILITY | TURN ON TIME | TURN OFF TIME | CAPACITANCE INPUT | WEIGHT (g) |
|-----------|------------------------|---------------------------|-------------------|-------------------------------------|------------------------------|--------------|-----------------|-------------------|------------|
| KA20C02A | 100 V ₁ SEC | 1.5VACrms | 100Ω | 2800VACrms | — | LESS 2mSEC | LESS 10μs cycle | LESS 15 PF | 15g |
| KA20C04A | 100 V ₁ SEC | 1.5VACrms | 100Ω | 2800VACrms | — | LESS 2mSEC | LESS 10μs cycle | LESS 15 PF | 15g |

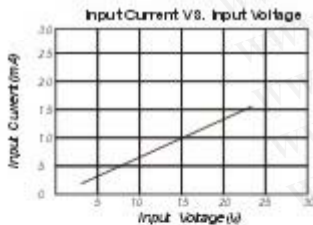
OUTLINE DIMENSIONS (unit: mm)



EQUIVALENT CIRCUIT



CHARACTERISTIC CURVES



Attention:
 In order to be in compliance with the EMC Directive an additional X2 capacitor at the output is required if the SSR is operated as a single component. In case the SSR is incorporated in an appliance the existing EMI filter may provide the required EMI suppression. The X2 capacitor must be placed as close as possible to the output terminals. See also above.

