

HPI - 6FFR4

The HPI - 6FFR4 is a high - output, high - speed silicon PIN photodiode mounted in a sidelooking package. The photodiode is small size, low profile and easy mounting.

FEATURES

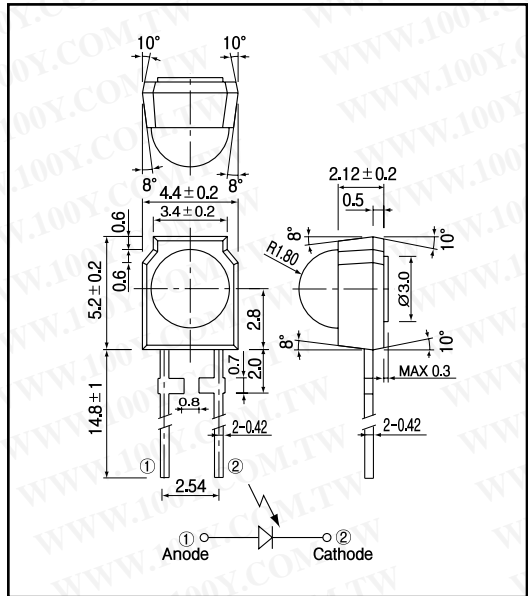
- High - output power
- High - speed response
- Wide angular response
- Low - cost
- Sidelooking plastic package

APPLICATIONS

- Remote control sensors
- Optical switches
- Photocoupler

DIMENSIONS

(Unit : mm)



MAXIMUM RATINGS

(Ta=25)

Item	Symbol	Rating	Unit
Reverse voltage	V _r	35	V
Operating temp.	T _{opr.}	- 30 +70	
Storage temp.	T _{stg.}	- 40 +80	
Soldering temp.*1	T _{sol.}	260	

*1.For MAX.5 seconds at the position of 2 mm from the package

勝特力材料 886-3-5753170
 勝特力电子(上海) 86-21-54151736
 勝特力电子(深圳) 86-755-83298787
[Http://www.100y.com.tw](http://www.100y.com.tw)

ELECTRO-OPTICAL CHARACTERISTICS

(Ta=25)

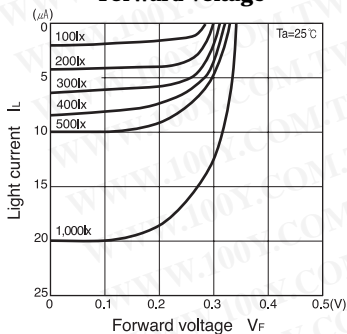
Item	Symbol	Conditions	Min.	Typ.	Max.	Unit.
Open circuit voltage	V _{oc}	E _v = 1,000lx ²		0.38		V
Short circuit current	I _{sc}			20		μA
Curve factor	C.F.	V _r = 10V			10	nA
Dark current	I _d		0.55			-
Capacitance	C _t	V = 0V, f = 1MHz		16		pF
Temperature coefficient of V _{oc}	t			- 2.2		mV/
Temperature coefficient of I _{sc}	t			0.18		%/
Spectral sensitivity				880 1050		nm
Peak wavelength	p			1,000		nm
Half angle				±35		deg

*2.Color temp. =2856K standard Tungsten lamp

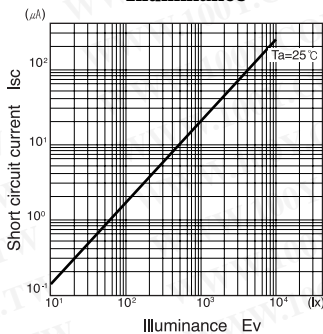
PIN Photodiode

HPI - 6FFR4

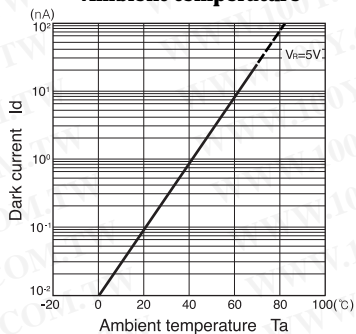
Light current Vs. Forward voltage



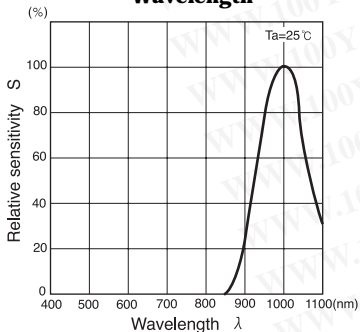
Short circuit current Vs. Illuminance



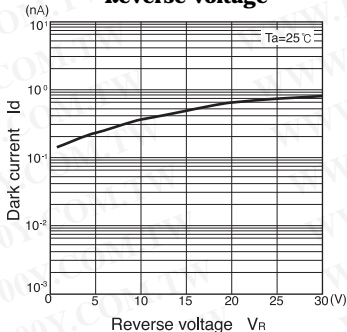
Dark current Vs. Ambient temperature



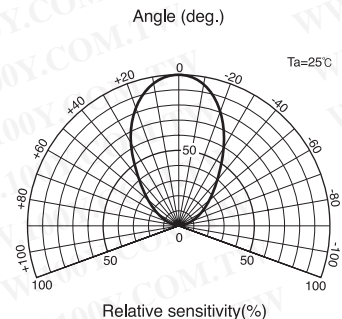
Relative sensitivity Vs. Wavelength



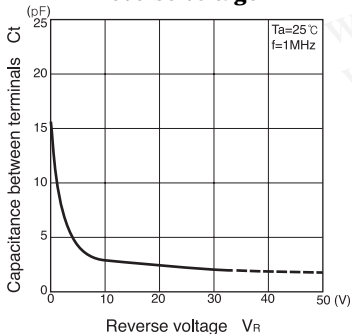
Dark current Vs. Reverse voltage



Radiant Pattern



Capacitance between terminals Vs. Reverse voltage



勝特力材料 886-3-5753170
勝特力电子(上海) 86-21-54151736
勝特力电子(深圳) 86-755-83298787
[Http://www.100y.com.tw](http://www.100y.com.tw)