

## FEATURES

- High performance power relay
- PCB terminal and solder lug terminal and flanged case are available
- LED version are available
- UL, CUL, TUV, and CE approved
- Using at control equipment, vending machine, cooking appliances, office machine, domestic appliances, etc.



UL FILE NO.: E131959  
 CUL FILE NO.: E131959  
 TUV FILE NO.: R9956267

## ORDERING INFORMATION

LB1 N — 12 D F S  
 1 2 3 4 5 6

勝特力材料 886-3-5753170  
 勝特力电子(上海) 86-21-54151736  
 勝特力电子(深圳) 86-755-83298787  
[Http://www.100y.com.tw](http://www.100y.com.tw)

- |  |  |  |
|--|--|--|
| <p>1. Type<br/>                 LB1(1PDT) : 15A<br/>                 LB2(2PDT) : 12A<br/>                 LB2H(2PDT) : 10A<br/>                 LB4H(4PDT) : 5A</p> <p>2. LED<br/>                 Nil : Without LED<br/>                 N : With LED</p> | <p>3. Coil Nominal Voltage</p> <p>4. Coil Nominal Voltage Type<br/>                 D: DC<br/>                 A: AC</p> <p>5. Cover Type<br/>                 Nil : Standard Type<br/>                 F : Flange Cover</p> | <p>6. Terminal Type<br/>                 S : Solder Lug / Plug-In Terminal<br/>                 P : PCB Terminal</p> |
|--|--|--|

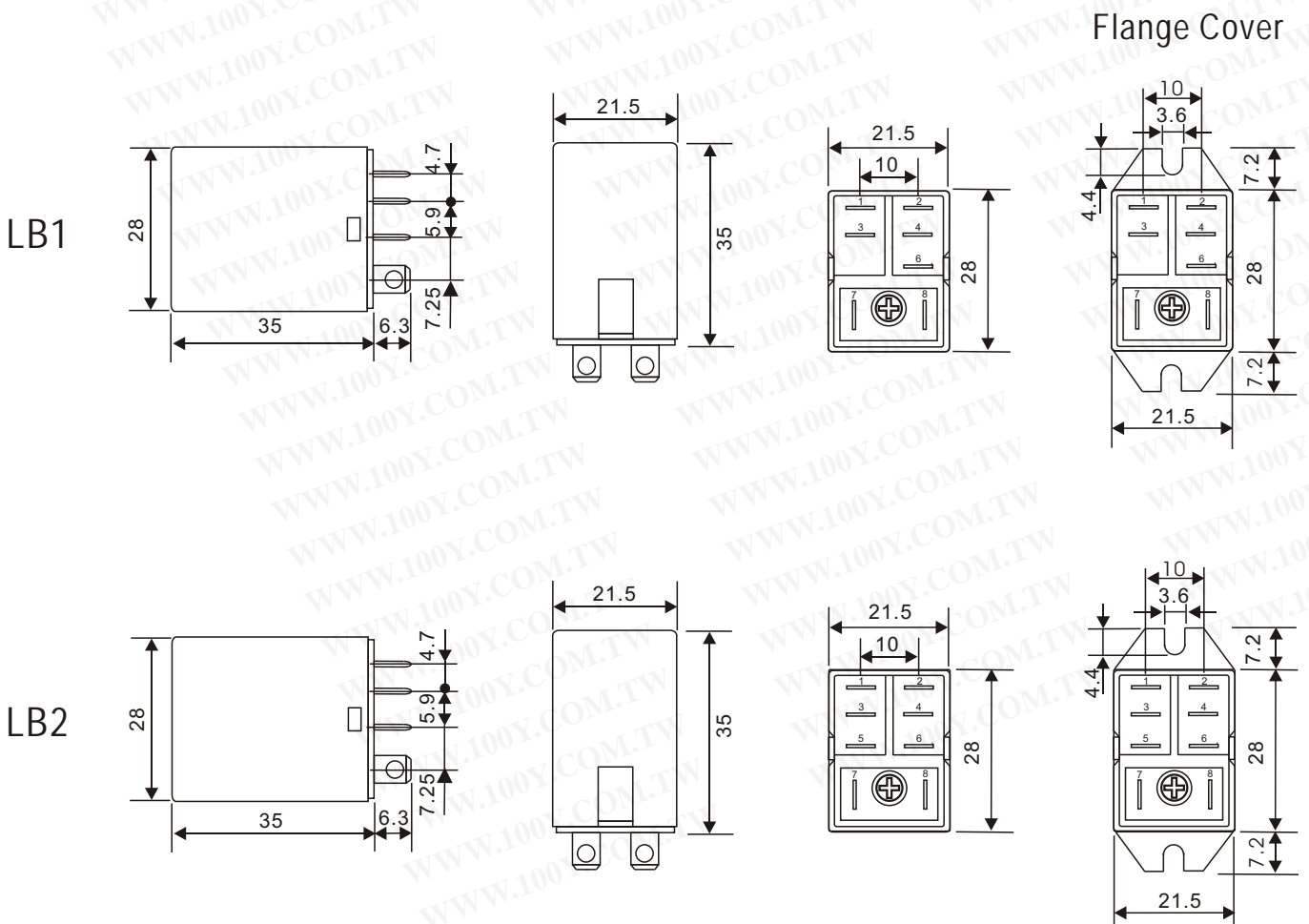
## COIL DATA(at 25°C)

| AC 1.2VA                       |                            |                             |                              | DC 0.9-1.1W                |                            |                      |                             |                              |
|--------------------------------|----------------------------|-----------------------------|------------------------------|----------------------------|----------------------------|----------------------|-----------------------------|------------------------------|
| Coil Nominal Voltage (50/60Hz) | Resistance Tol.±10% (Ohms) | Maximum Pick Up Voltage (V) | Minimum Drop Out Voltage (V) | Coil Nominal Voltage (VDC) | Resistance Tol.±10% (Ohms) | Nominal Current (mA) | Maximum Pick Up Voltage (V) | Minimum Drop Out Voltage (V) |
| 6                              | 10                         | 4.8                         | 1.8                          | 6                          | 40                         | 150                  | 4.5                         | 0.6                          |
| 12                             | 45                         | 9.6                         | 3.6                          | 12                         | 160                        | 75                   | 9.0                         | 1.2                          |
| 24                             | 160                        | 19.2                        | 7.2                          | 24                         | 650                        | 37                   | 18.0                        | 2.4                          |
| 48                             | 670                        | 38.4                        | 14.4                         | 48                         | 2,600                      | 19                   | 36.0                        | 4.8                          |
| 100/110                        | 3,900                      | 88.0                        | 33.0                         | 90                         | 9,000                      | 10                   | 67.5                        | 9.0                          |
| 220/240                        | 16,000                     | 176.0                       | 66.0                         | 100/110                    | 11,000                     | 9                    | 82.5                        | 11.0                         |

## CONTACT RATING

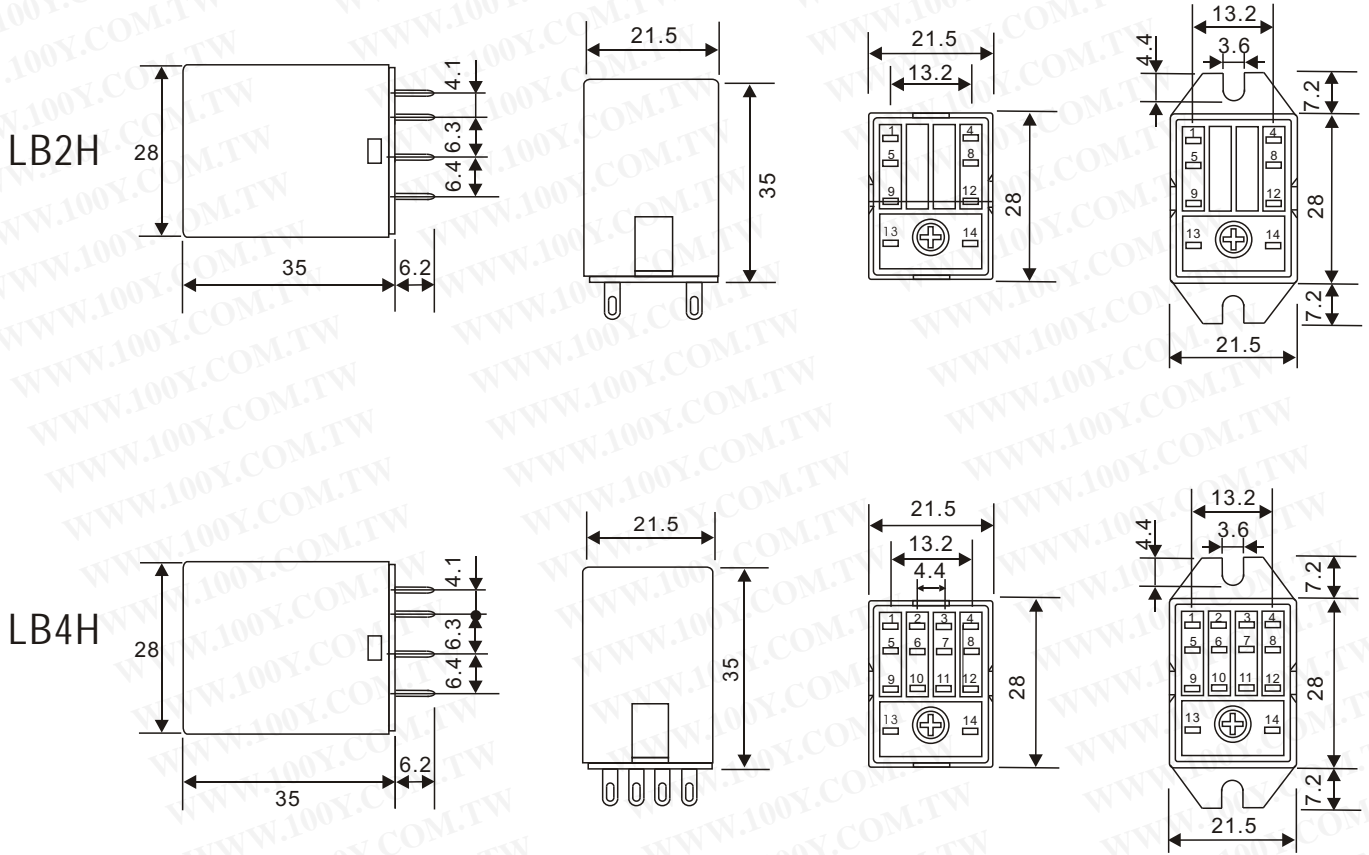
|           |                        |                  |     |     |
|-----------|------------------------|------------------|-----|-----|
| LB1 TYPE  | Resistive (Cos. = 1)   | AC 240V / DC 30V | 15A | UL  |
|           |                        | AC 240V / DC 24V | 15A | TUV |
| LB1 TYPE  | Inductive (Cos. = 0.4) | AC 240V          | 8A  | TUV |
|           |                        |                  |     |     |
| LB2 TYPE  | Resistive (Cos. = 1)   | AC 240V / DC 30V | 12A | UL  |
|           |                        | AC 240V / DC 24V | 10A | TUV |
| LB2 TYPE  | Inductive (Cos. = 0.4) | AC 240V          | 5A  | TUV |
|           |                        |                  |     |     |
| LB2H TYPE | Resistive (Cos. = 1)   | AC 240V / DC 30V | 10A | UL  |
|           |                        | AC 240V / DC 24V | 10A | TUV |
| LB2H TYPE | Inductive (Cos. = 0.4) | AC 240V          | 5A  | TUV |
|           |                        |                  |     |     |
| LB4H TYPE | Resistive (Cos. = 1)   | AC 240V / DC 30V | 5A  | UL  |
|           |                        | AC 240V / DC 24V | 5A  | TUV |
| LB4H TYPE | Inductive (Cos. = 0.4) | AC 240V          | 3A  | TUV |
|           |                        |                  |     |     |

## DIMENSIONS(mm)

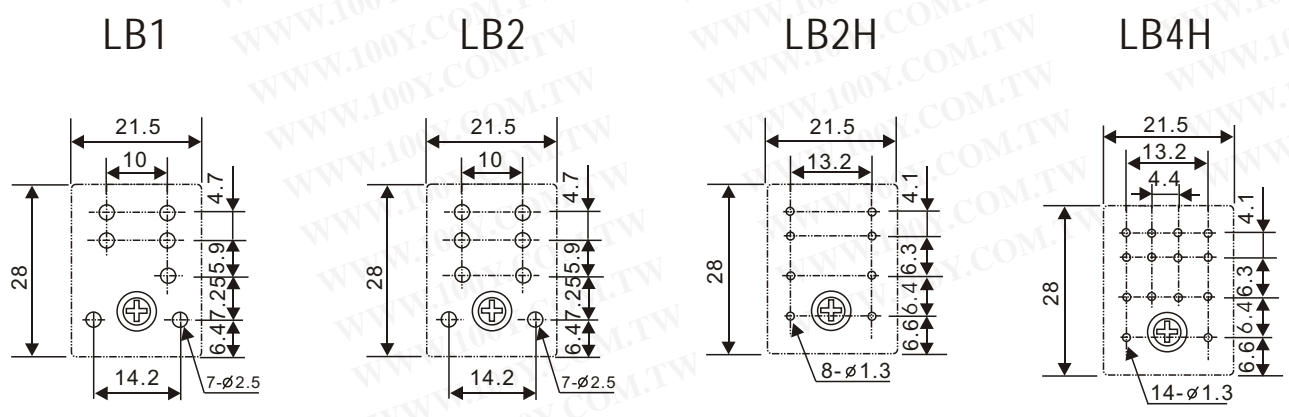


**DIMENSIONS(mm)**

**Flange Cover**

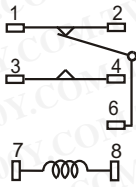


**DRILLING PLAN**

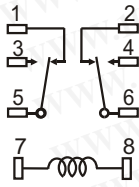


## WRING DIAGRAM

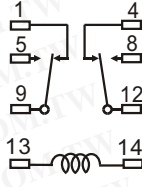
LB1



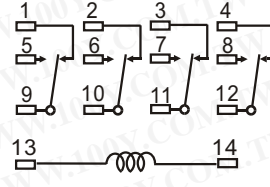
LB2



LB2H

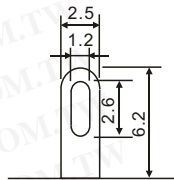
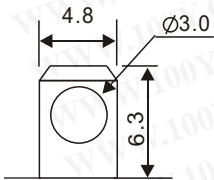


LB4H

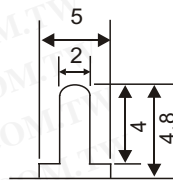


## TERMINAL TYPE(mm)

SOLDER LUG/PLUG-IN



PRINTED CIRCUIT



## GENERAL DATA

|                       |   |
|-----------------------|---|
| Insulation Resistance | 1,500 M Min. (DC 500V)                                  |
| Dielectric Strength   | 750 VAC, 50/60Hz between contact.                       |
|                       | 1,500 VAC, 50/60Hz between all elements.                |
| Contact Material      | Silver- Cadmium Oxide as standard.                      |
| Contact Resistance    | 100 milliohms max. (initial value)                      |
| Shock Resistance      | Malfunction: 10G(11ms) ; Destructive: 100G(6ms)         |
| Vibration Resistance  | Malfunction: 10 to 55 Hz. at Double Amplitude of 1.5 mm |
|                       | Destructive: 10 to 55 Hz. at Double Amplitude of 1.5 mm |
| Operation Time        | 15 ms max.  |
| Release Time          | 15 ms max.  |
| Temperature Range     | - 40°C ~ + 60°C   |
| Expected Life         | With operation rate 30/min.                             |
|                       | Mechanical - 10,000,000 operations min.                 |
|                       | Electrical - 100,000 operations min. at rated load.     |
| Weight                | 37 grams  |