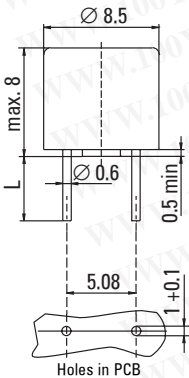


No. 382 / TR5®



Dimensions (mm)



Long Leads (L=18.8mm)
 Short Leads (L=4.3mm)

IEC 60127-3/IV, 250 V, T
 lead free

Time-Current Characteristic

Time Lag (T)

Standard

IEC 60127-3/IV

Approvals

- VDE
- SEMKO
- cULus Recognized
- METI-T-Mark
- METI-PSE
- CCC
- K-Mark

Features

- Lead Free
- 320 V cULus recognized
- Electronic Ballast for Lamps
- 100A breaking capacity
- Reduced PCB space requirements
- Direct solderable or plug-in versions
- Internationally approved
- Low internal resistance
- Shocksafe casing
- Vibration resistant
- Halogen free

Specifications

Packaging

- 000: Tape/Ammopack (1,000 pcs.)
- 041: Short Leads - Bulk (1,000 pcs.)

Materials

- Base/Cap: Brown Thermoplastic
Polyamide PA 6.6, UL 94 V0
- Round Pins: Copper, Sn plated

Operating Temperature

-40 °C to +85 °C (consider de-rating)

Climatic Category

-40 °C/+85 °C/21 days
 (IEC 60068-1,-2-1,-2-2,-2-78)

Stock Conditions

+10 °C to +60 °C
 relative humidity ≤ 75 % yearly average,
 without dew, maximum value for 30 days-95 %

Vibration Resistance

- 24 cycles at 15 min. each (EN 60068-2-6)
- 10 - 60 Hz at 0.75 mm amplitude
- 60 - 2000 Hz at 10 g acceleration

Lead Pull Strength

10N (IEC 60068-2-21)

Solderability

- 260 °C, ≤ 3 s (Wave)
- 350 °C, ≤ 3 s (Soldering Iron)

Soldering Heat Resistance

260 °C, 10 s (IEC 60068-2-20)

Marking

Ⓢ, 382, 250 V, T, Current Rating, Approvals

Unit Weight

0.82 g (approx.)



Limits for Pre-arcing Time

Rated Current	1.5 x I _N	2.1 x I _N	2.75 x I _N	4 x I _N	10 x I _N
1.00 A ... 6.30 A	> 1 h	< 2 min	400 ms ... 10 s	150 ms ... 3 s	20 ms ... 150 ms
8.00 A ... 10.00 A	> 1 h	< 300 s	1 s ... 20 s	150 ms ... 3 s	20 ms ... 150 ms



Permissible continuous operating current is ≤ 100 % at ambient temperature of 23 °C (73.4 °F).

Rated Current	Amp Code	Voltage Rating	Breaking Capacity	Voltage Drop 1.0 x I _N Ⓢ max. (mV)	Power Dissipation 1.5 x I _N Ⓢ max. (mW)	Melting Integral 10 x I _N Ⓢ min. (A²s)	Approvals					
							VDE	SEMKO	cURus	METI-T-Mark	METI-PSE	CCC
1.00 A	1100	250 V	100A / 250 V AC ¹ 50-60 Hz cos φ=1.0	100	400	3.0	•	•	•	•	•	•
1.25 A	1125	250 V		95	465	4.5	•	•	•	•	•	•
1.60 A	1160	250 V		90	490	9.0	•	•	•	•	•	•
2.00 A	1200	250 V		85	670	12	•	•	•	•	•	•
2.50 A	1250	250 V		80	750	22	•	•	•	•	•	•
3.15 A	1315	250 V		75	900	32	•	•	•	•	•	•
4.00 A	1400	250 V		70	1200	58	•	•	•	•	•	•
5.00 A	1500	250 V		65	1250	90	G	•	•	•	•	•
6.30 A*	1630	250 V		65	1400	105	G	•	•	•	•	•
8.00 A**	1800	250 V		63	1600	180		•	•	•	•	•
10.00A**	2100	250 V	57	1600	260		•	•	•	•	•	

¹ Breaking capacity at UR: 50A at 320V

* Conducting path min. 0.2 mm²

G Expert Report

**Conducting path min. 0.35 mm²

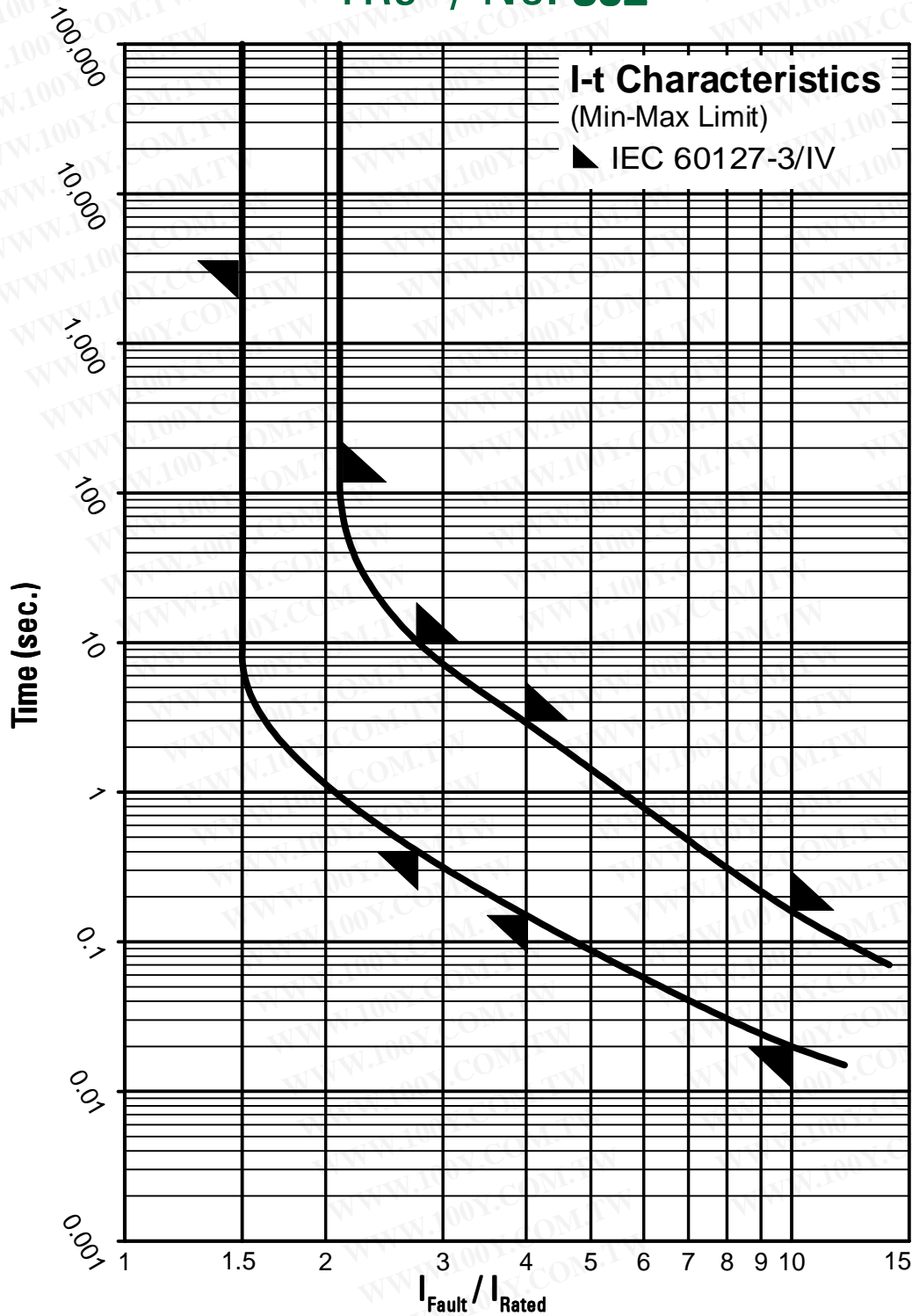
Note: 1.00 means the number one with two decimal places. 1,000 means the number one thousand.

Order Information

Qty.	Order-Number	Series	Amp Code	Packaging
		382		

Specifications are subject to change without notice

TR5[®] / No. 382



Contact Littelfuse for individual I-t curves