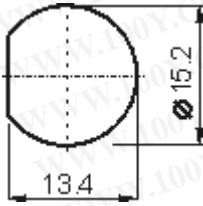
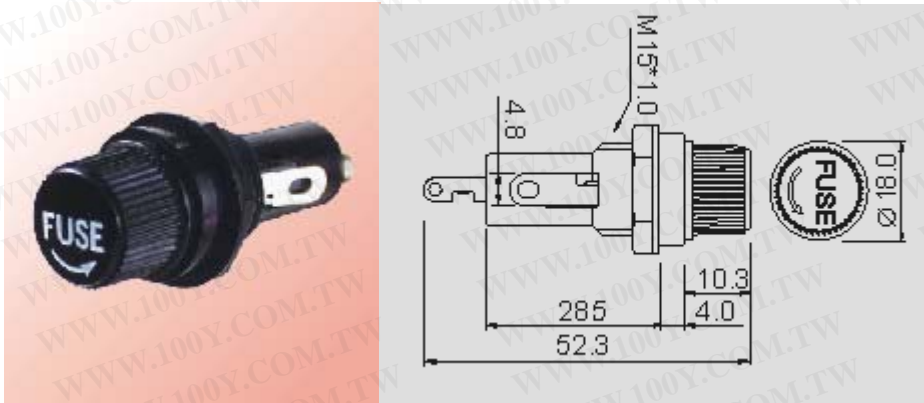


R3-13



10A 250V AC


4.5 mm MAX

(4.2mm)0.163" SO
(4.8mm)0.187" SQ

勝特力材料 886-3-5753170
勝特力电子(上海) 86-21-54151736
勝特力电子(深圳) 86-755-83298787
[Http://www.100y.com.tw](http://www.100y.com.tw)

FEATURES:

- Material:
Frame and cap: phenolic(UL flame: 94V-1).
Terminal : nickel plated brass.
- Mounted by nut.

R3-13 

CAP

Screw type

FUSE 

∅ 6.4*30mm

∅ 6.35*31.8mm