

BUILT-IN DELAY CIRCUIT HIGH-PRECISION VOLTAGE DETECTOR

S-809xxC Series

The S-809xxC Series is a high-precision voltage detector developed using CMOS process. The detection voltage is fixed internally with an accuracy of $\pm 2.0\%$. A time delayed reset can be accomplished with the addition of an external capacitor. Two output forms, N-channel open-drain and CMOS output, are available.

■ Features

- Ultra-low current consumption
 $1.0\ \mu\text{A typ. (}V_{\text{DD}}=2.0\ \text{V)}$
 ; Detection voltage $\leq 1.4\ \text{V}$
 $1.1\ \mu\text{A typ. (}V_{\text{DD}}=3.5\ \text{V)}$
 ; Detection voltage $\geq 1.5\ \text{V}$
- High-precision detection voltage $\pm 2.0\%$
- Operating voltage range $0.7\ \text{V to } 10.0\ \text{V}$
- Detection voltage $1.3\ \text{V to } 6.0\ \text{V (}0.1\ \text{V step)}$
- Hysteresis characteristics $5\% \text{ typ.}$
- Two output forms CMOS output active "L"
 Open-drain output active "L"

■ Applications

- Power supply monitor for portable equipment such as electronic organizers, notebook PCs, cellular phones, digital cameras
- Constant voltage power monitor for cameras, communication equipment and video equipment
- Power monitor and reset for CPUs and microcomputers

勝特力材料 886-3-5753170
 勝特力电子(上海) 86-21-54151736
 勝特力电子(深圳) 86-755-83298787
[Http://www.100y.com.tw](http://www.100y.com.tw)

■ Packages

SC-82AB	(Package drawing code, NP004-A)
4-Pin SNB(B)	(Package drawing code, BB004-A)
SOT-23-5	(Package drawing code, MP005-A)

■ Block Diagrams

(1) Nch open-drain output

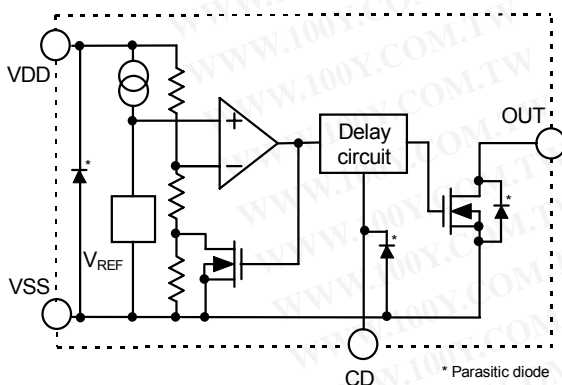


Figure 1

(2) CMOS output

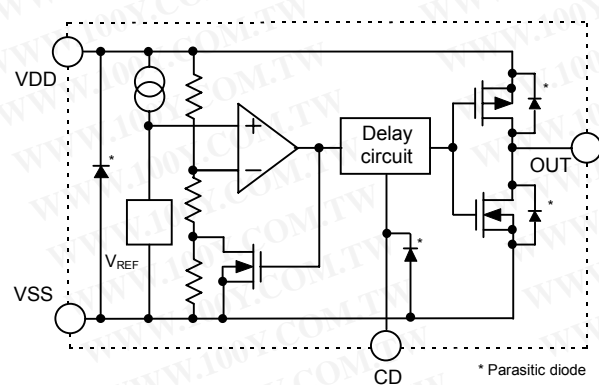


Figure 2

勝特力材料 886-3-5753170
 勝特力电子(上海) 86-21-54151736
 勝特力电子(深圳) 86-755-83298787
[Http://www.100y.com.tw](http://www.100y.com.tw)

■ Selection Guide

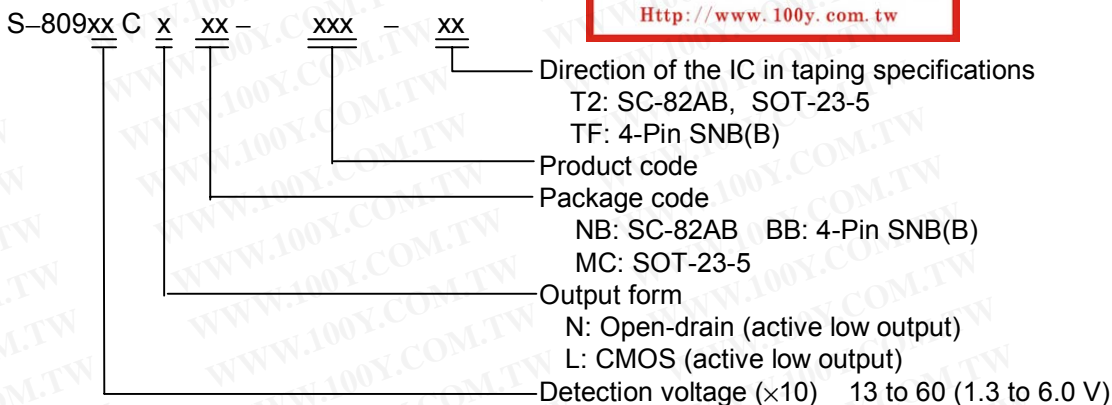


Table 1.1

Detection voltage range (V)	Hysteresis width typ.	Nch open-drain (Low)		
		SC-82AB	SOT-23-5	4-Pin SNB(B)
1.3 V ± 2.0%	0.065 V	S-80913CNNB-G8H-T2	S-80913CNMC-G8H-T2	S-80913CNBB-G8H-TF
1.4 V ± 2.0%	0.070 V	S-80914CNNB-G8J-T2	S-80914CNMC-G8J-T2	S-80914CNBB-G8J-TF
1.5 V ± 2.0%	0.075 V	S-80915CNNB-G8K-T2	S-80915CNMC-G8K-T2	S-80915CNBB-G8K-TF
1.6 V ± 2.0%	0.080 V	S-80916CNNB-G8L-T2	S-80916CNMC-G8L-T2	S-80916CNBB-G8L-TF
1.7 V ± 2.0%	0.085 V	S-80917CNNB-G8M-T2	S-80917CNMC-G8M-T2	S-80917CNBB-G8M-TF
1.8 V ± 2.0%	0.090 V	S-80918CNNB-G8N-T2	S-80918CNMC-G8N-T2	S-80918CNBB-G8N-TF
1.9 V ± 2.0%	0.095 V	S-80919CNNB-G8P-T2	S-80919CNMC-G8P-T2	S-80919CNBB-G8P-TF
2.0 V ± 2.0%	0.100 V	S-80920CNNB-G8Q-T2	S-80920CNMC-G8Q-T2	S-80920CNBB-G8Q-TF
2.1 V ± 2.0%	0.105 V	S-80921CNNB-G8R-T2	S-80921CNMC-G8R-T2	S-80921CNBB-G8R-TF
2.2 V ± 2.0%	0.110 V	S-80922CNNB-G8S-T2	S-80922CNMC-G8S-T2	S-80922CNBB-G8S-TF
2.3 V ± 2.0%	0.115 V	S-80923CNNB-G8T-T2	S-80923CNMC-G8T-T2	S-80923CNBB-G8T-TF
2.4 V ± 2.0%	0.120 V	S-80924CNNB-G8U-T2	S-80924CNMC-G8U-T2	S-80924CNBB-G8U-TF
2.5 V ± 2.0%	0.125 V	S-80925CNNB-G8V-T2	S-80925CNMC-G8V-T2	S-80925CNBB-G8V-TF
2.6 V ± 2.0%	0.130 V	S-80926CNNB-G8W-T2	S-80926CNMC-G8W-T2	S-80926CNBB-G8W-TF
2.7 V ± 2.0%	0.135 V	S-80927CNNB-G8X-T2	S-80927CNMC-G8X-T2	S-80927CNBB-G8X-TF
2.8 V ± 2.0%	0.140 V	S-80928CNNB-G8Y-T2	S-80928CNMC-G8Y-T2	S-80928CNBB-G8Y-TF
2.9 V ± 2.0%	0.145 V	S-80929CNNB-G8Z-T2	S-80929CNMC-G8Z-T2	S-80929CNBB-G8Z-TF
3.0 V ± 2.0%	0.150 V	S-80930CNNB-G80-T2	S-80930CNMC-G80-T2	S-80930CNBB-G80-TF
3.1 V ± 2.0%	0.155 V	S-80931CNNB-G81-T2	S-80931CNMC-G81-T2	S-80931CNBB-G81-TF
3.2 V ± 2.0%	0.160 V	S-80932CNNB-G82-T2	S-80932CNMC-G82-T2	S-80932CNBB-G82-TF
3.3 V ± 2.0%	0.165 V	S-80933CNNB-G83-T2	S-80933CNMC-G83-T2	S-80933CNBB-G83-TF
3.4 V ± 2.0%	0.170 V	S-80934CNNB-G84-T2	S-80934CNMC-G84-T2	S-80934CNBB-G84-TF
3.5 V ± 2.0%	0.175 V	S-80935CNNB-G85-T2	S-80935CNMC-G85-T2	S-80935CNBB-G85-TF
3.6 V ± 2.0%	0.180 V	S-80936CNNB-G86-T2	S-80936CNMC-G86-T2	S-80936CNBB-G86-TF
3.7 V ± 2.0%	0.185 V	S-80937CNNB-G87-T2	S-80937CNMC-G87-T2	S-80937CNBB-G87-TF
3.8 V ± 2.0%	0.190 V	S-80938CNNB-G88-T2	S-80938CNMC-G88-T2	S-80938CNBB-G88-TF
3.9 V ± 2.0%	0.195 V	S-80939CNNB-G89-T2	S-80939CNMC-G89-T2	S-80939CNBB-G89-TF
4.0 V ± 2.0%	0.200 V	S-80940CNNB-G9A-T2	S-80940CNMC-G9A-T2	S-80940CNBB-G9A-TF
4.1 V ± 2.0%	0.205 V	S-80941CNNB-G9B-T2	S-80941CNMC-G9B-T2	S-80941CNBB-G9B-TF
4.2 V ± 2.0%	0.210 V	S-80942CNNB-G9C-T2	S-80942CNMC-G9C-T2	S-80942CNBB-G9C-TF
4.3 V ± 2.0%	0.215 V	S-80943CNNB-G9D-T2	S-80943CNMC-G9D-T2	S-80943CNBB-G9D-TF
4.4 V ± 2.0%	0.220 V	S-80944CNNB-G9E-T2	S-80944CNMC-G9E-T2	S-80944CNBB-G9E-TF
4.5 V ± 2.0%	0.225 V	S-80945CNNB-G9F-T2	S-80945CNMC-G9F-T2	S-80945CNBB-G9F-TF
4.6 V ± 2.0%	0.230 V	S-80946CNNB-G9G-T2	S-80946CNMC-G9G-T2	S-80946CNBB-G9G-TF
4.7 V ± 2.0%	0.235 V	S-80947CNNB-G9H-T2	S-80947CNMC-G9H-T2	S-80947CNBB-G9H-TF
4.8 V ± 2.0%	0.240 V	S-80948CNNB-G9J-T2	S-80948CNMC-G9J-T2	S-80948CNBB-G9J-TF
4.9 V ± 2.0%	0.245 V	S-80949CNNB-G9K-T2	S-80949CNMC-G9K-T2	S-80949CNBB-G9K-TF
5.0 V ± 2.0%	0.250 V	S-80950CNNB-G9L-T2	S-80950CNMC-G9L-T2	S-80950CNBB-G9L-TF
5.1 V ± 2.0%	0.255 V	S-80951CNNB-G9M-T2	S-80951CNMC-G9M-T2	S-80951CNBB-G9M-TF
5.2 V ± 2.0%	0.260 V	S-80952CNNB-G9N-T2	S-80952CNMC-G9N-T2	S-80952CNBB-G9N-TF
5.3 V ± 2.0%	0.265 V	S-80953CNNB-G9P-T2	S-80953CNMC-G9P-T2	S-80953CNBB-G9P-TF
5.4 V ± 2.0%	0.270 V	S-80954CNNB-G9Q-T2	S-80954CNMC-G9Q-T2	S-80954CNBB-G9Q-TF
5.5 V ± 2.0%	0.275 V	S-80955CNNB-G9R-T2	S-80955CNMC-G9R-T2	S-80955CNBB-G9R-TF
5.6 V ± 2.0%	0.280 V	S-80956CNNB-G9S-T2	S-80956CNMC-G9S-T2	S-80956CNBB-G9S-TF
5.7 V ± 2.0%	0.285 V	S-80957CNNB-G9T-T2	S-80957CNMC-G9T-T2	S-80957CNBB-G9T-TF
5.8 V ± 2.0%	0.290 V	S-80958CNNB-G9U-T2	S-80958CNMC-G9U-T2	S-80958CNBB-G9U-TF
5.9 V ± 2.0%	0.295 V	S-80959CNNB-G9V-T2	S-80959CNMC-G9V-T2	S-80959CNBB-G9V-TF
6.0 V ± 2.0%	0.300 V	S-80960CNNB-G9W-T2	S-80960CNMC-G9W-T2	S-80960CNBB-G9W-TF

BUILT-IN DELAY CIRCUIT HIGH-PRECISION VOLTAGE DETECTOR

S-809xxC Series

Rev.1.2_30

Table 1.2

Detection voltage range (V)	Hysteresis width typ.	CMOS output (Low)		
		SC-82AB	SOT-23-5	4-Pin SNB(B)
1.3 V ± 2.0%	0.065 V	S-80913CLNB-G6H-T2	S-80913CLMC-G6H-T2	S-80913CLBB-G6H-TF
1.4 V ± 2.0%	0.070 V	S-80914CLNB-G6J-T2	S-80914CLMC-G6J-T2	S-80914CLBB-G6J-TF
1.5 V ± 2.0%	0.075 V	S-80915CLNB-G6K-T2	S-80915CLMC-G6K-T2	S-80915CLBB-G6K-TF
1.6 V ± 2.0%	0.080 V	S-80916CLNB-G6L-T2	S-80916CLMC-G6L-T2	S-80916CLBB-G6L-TF
1.7 V ± 2.0%	0.085 V	S-80917CLNB-G6M-T2	S-80917CLMC-G6M-T2	S-80917CLBB-G6M-TF
1.8 V ± 2.0%	0.090 V	S-80918CLNB-G6N-T2	S-80918CLMC-G6N-T2	S-80918CLBB-G6N-TF
1.9 V ± 2.0%	0.095 V	S-80919CLNB-G6P-T2	S-80919CLMC-G6P-T2	S-80919CLBB-G6P-TF
2.0 V ± 2.0%	0.100 V	S-80920CLNB-G6Q-T2	S-80920CLMC-G6Q-T2	S-80920CLBB-G6Q-TF
2.1 V ± 2.0%	0.105 V	S-80921CLNB-G6R-T2	S-80921CLMC-G6R-T2	S-80921CLBB-G6R-TF
2.2 V ± 2.0%	0.110 V	S-80922CLNB-G6S-T2	S-80922CLMC-G6S-T2	S-80922CLBB-G6S-TF
2.3 V ± 2.0%	0.115 V	S-80923CLNB-G6T-T2	S-80923CLMC-G6T-T2	S-80923CLBB-G6T-TF
2.4 V ± 2.0%	0.120 V	S-80924CLNB-G6U-T2	S-80924CLMC-G6U-T2	S-80924CLBB-G6U-TF
2.5 V ± 2.0%	0.125 V	S-80925CLNB-G6V-T2	S-80925CLMC-G6V-T2	S-80925CLBB-G6V-TF
2.6 V ± 2.0%	0.130 V	S-80926CLNB-G6W-T2	S-80926CLMC-G6W-T2	S-80926CLBB-G6W-TF
2.7 V ± 2.0%	0.135 V	S-80927CLNB-G6X-T2	S-80927CLMC-G6X-T2	S-80927CLBB-G6X-TF
2.8 V ± 2.0%	0.140 V	S-80928CLNB-G6Y-T2	S-80928CLMC-G6Y-T2	S-80928CLBB-G6Y-TF
2.9 V ± 2.0%	0.145 V	S-80929CLNB-G6Z-T2	S-80929CLMC-G6Z-T2	S-80929CLBB-G6Z-TF
3.0 V ± 2.0%	0.150 V	S-80930CLNB-G60-T2	S-80930CLMC-G60-T2	S-80930CLBB-G60-TF
3.1 V ± 2.0%	0.155 V	S-80931CLNB-G61-T2	S-80931CLMC-G61-T2	S-80931CLBB-G61-TF
3.2 V ± 2.0%	0.160 V	S-80932CLNB-G62-T2	S-80932CLMC-G62-T2	S-80932CLBB-G62-TF
3.3 V ± 2.0%	0.165 V	S-80933CLNB-G63-T2	S-80933CLMC-G63-T2	S-80933CLBB-G63-TF
3.4 V ± 2.0%	0.170 V	S-80934CLNB-G64-T2	S-80934CLMC-G64-T2	S-80934CLBB-G64-TF
3.5 V ± 2.0%	0.175 V	S-80935CLNB-G65-T2	S-80935CLMC-G65-T2	S-80935CLBB-G65-TF
3.6 V ± 2.0%	0.180 V	S-80936CLNB-G66-T2	S-80936CLMC-G66-T2	S-80936CLBB-G66-TF
3.7 V ± 2.0%	0.185 V	S-80937CLNB-G67-T2	S-80937CLMC-G67-T2	S-80937CLBB-G67-TF
3.8 V ± 2.0%	0.190 V	S-80938CLNB-G68-T2	S-80938CLMC-G68-T2	S-80938CLBB-G68-TF
3.9 V ± 2.0%	0.195 V	S-80939CLNB-G69-T2	S-80939CLMC-G69-T2	S-80939CLBB-G69-TF
4.0 V ± 2.0%	0.200 V	S-80940CLNB-G7A-T2	S-80940CLMC-G7A-T2	S-80940CLBB-G7A-TF
4.1 V ± 2.0%	0.205 V	S-80941CLNB-G7B-T2	S-80941CLMC-G7B-T2	S-80941CLBB-G7B-TF
4.2 V ± 2.0%	0.210 V	S-80942CLNB-G7C-T2	S-80942CLMC-G7C-T2	S-80942CLBB-G7C-TF
4.3 V ± 2.0%	0.215 V	S-80943CLNB-G7D-T2	S-80943CLMC-G7D-T2	S-80943CLBB-G7D-TF
4.4 V ± 2.0%	0.220 V	S-80944CLNB-G7E-T2	S-80944CLMC-G7E-T2	S-80944CLBB-G7E-TF
4.5 V ± 2.0%	0.225 V	S-80945CLNB-G7F-T2	S-80945CLMC-G7F-T2	S-80945CLBB-G7F-TF
4.6 V ± 2.0%	0.230 V	S-80946CLNB-G7G-T2	S-80946CLMC-G7G-T2	S-80946CLBB-G7G-TF
4.7 V ± 2.0%	0.235 V	S-80947CLNB-G7H-T2	S-80947CLMC-G7H-T2	S-80947CLBB-G7H-TF
4.8 V ± 2.0%	0.240 V	S-80948CLNB-G7J-T2	S-80948CLMC-G7J-T2	S-80948CLBB-G7J-TF
4.9 V ± 2.0%	0.245 V	S-80949CLNB-G7K-T2	S-80949CLMC-G7K-T2	S-80949CLBB-G7K-TF
5.0 V ± 2.0%	0.250 V	S-80950CLNB-G7L-T2	S-80950CLMC-G7L-T2	S-80950CLBB-G7L-TF
5.1 V ± 2.0%	0.255 V	S-80951CLNB-G7M-T2	S-80951CLMC-G7M-T2	S-80951CLBB-G7M-TF
5.2 V ± 2.0%	0.260 V	S-80952CLNB-G7N-T2	S-80952CLMC-G7N-T2	S-80952CLBB-G7N-TF
5.3 V ± 2.0%	0.265 V	S-80953CLNB-G7P-T2	S-80953CLMC-G7P-T2	S-80953CLBB-G7P-TF
5.4 V ± 2.0%	0.270 V	S-80954CLNB-G7Q-T2	S-80954CLMC-G7Q-T2	S-80954CLBB-G7Q-TF
5.5 V ± 2.0%	0.275 V	S-80955CLNB-G7R-T2	S-80955CLMC-G7R-T2	S-80955CLBB-G7R-TF
5.6 V ± 2.0%	0.280 V	S-80956CLNB-G7S-T2	S-80956CLMC-G7S-T2	S-80956CLBB-G7S-TF
5.7 V ± 2.0%	0.285 V	S-80957CLNB-G7T-T2	S-80957CLMC-G7T-T2	S-80957CLBB-G7T-TF
5.8 V ± 2.0%	0.290 V	S-80958CLNB-G7U-T2	S-80958CLMC-G7U-T2	S-80958CLBB-G7U-TF
5.9 V ± 2.0%	0.295 V	S-80959CLNB-G7V-T2	S-80959CLMC-G7V-T2	S-80959CLBB-G7V-TF
6.0 V ± 2.0%	0.300 V	S-80960CLNB-G7W-T2	S-80960CLMC-G7W-T2	S-80960CLBB-G7W-TF

勝特力材料 886-3-5753170
勝特力电子(上海) 86-21-54151736
勝特力电子(深圳) 86-755-83298787
[Http://www.100y.com.tw](http://www.100y.com.tw)

■ **Pin Assignment**

See the detailed drawing of the package at the end of this document.

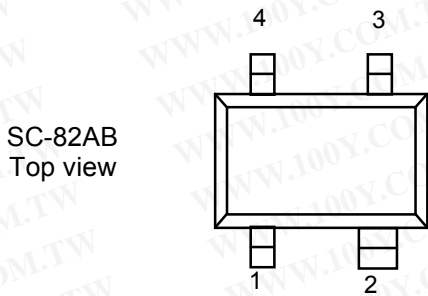


Figure 3

Table 2

No.	Symbol	Description
1	VSS	Ground pin
2	VDD	Voltage input pin
3	CD	Connection pin for delay capacitor
4	OUT	Voltage detection output pin

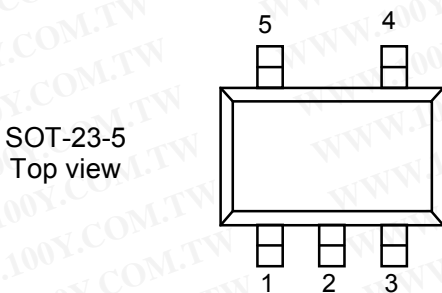


Figure 4

Table 3

No.	Symbol	Description
1	OUT	Voltage detection output pin
2	VDD	Voltage input pin
3	VSS	Ground pin
4	N.C.*1	No connection
5	CD	Connection pin for delay capacitor

*1. NC pin is electrically open. Connecting this pin to VDD or VSS is allowed.

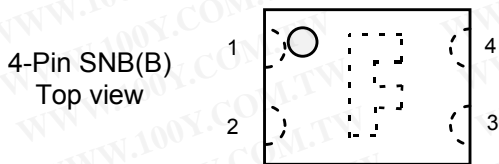


Figure 5

Table 4

No.	Symbol	Description
1	VSS	Ground pin
2	OUT	Voltage detection output pin
3	CD	Connection pin for delay capacitor
4	VDD	Voltage input pin

■ **Absolute Maximum Ratings**

Table 5

勝特力材料 886-3-5753170
 勝特力电子(上海) 86-21-54151736
 勝特力电子(深圳) 86-755-83298787
[Http://www.100y.com.tw](http://www.100y.com.tw)

(Ta=25°C unless otherwise specified)

Parameter		Symbol	Ratings	Unit	
Power supply voltage		$V_{DD}-V_{SS}$	12	V	
CD pin Input voltage		V_{CD}	$V_{SS}-0.3$ to $V_{DD}+0.3$	V	
Output voltage	Nch open-drain	V_{OUT}	$V_{SS}-0.3$ to $V_{SS}+12$	V	
	CMOS		$V_{SS}-0.3$ to $V_{DD}+0.3$	V	
Output current		I_{OUT}	50	mA	
Power dissipation		P_D	SC-82AB	150	mW
			SOT-23-5	250	mW
			4-Pin SNB(B)	60	mW
Operating temperature		T_{opr}	-40 to +85	°C	
Storage temperature		T_{stg}	-40 to +125	°C	

Caution The absolute maximum ratings are rated values exceeding which the product could suffer physical damage. These values must therefore not be exceeded under any conditions.

■ **Electrical Characteristics (1)**

Table 6.1

Nch open-drain output products (Ta=25°C unless otherwise specified)

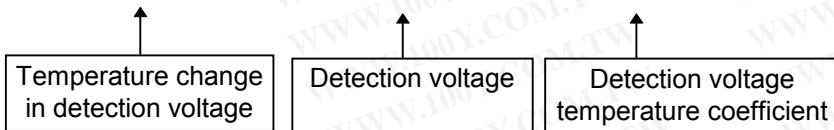
Parameter	Symbol	Conditions	Min.	Typ.	Max.	Unit	Test circuit	
Detection voltage *1	-V _{DET}	—	-V _{DET(S)} ×0.98	-V _{DET(S)}	-V _{DET(S)} ×1.02	V	1	
Hysteresis width	V _{HYS}	S-80913 to 14	-V _{DET} ×0.03	-V _{DET} ×0.05	-V _{DET} ×0.08	V	1	
		S-80915 to 60	-V _{DET} ×0.03	-V _{DET} ×0.05	-V _{DET} ×0.07			
Current consumption	I _{SS}	V _{DD} =2.0 V S-80913 to 14	—	1.0	2.5	μA	2	
		V _{DD} =3.5 V S-80915 to 26	—	1.1	2.8			
		V _{DD} =4.5 V S-80927 to 39	—	1.2	3.0			
		V _{DD} =6.0 V S-80940 to 54	—	1.3	3.3			
		V _{DD} =7.5 V S-80955 to 60	—	1.4	3.5			
Operating voltage	V _{DD}	—	0.7	—	10.0	V	1	
Output current of output transistor	I _{OUT}	N-channel V _{DS} =0.5 V	V _{DD} =0.95 V S-80913 to 14	0.23	0.64	—	mA	3
			V _{DD} =1.2 V S-80915 to 60	0.59	1.36	—		
			V _{DD} =2.4 V S-80927 to 60	2.88	4.98	—		
Leakage current of output transistor	I _{LEAK}	N-channel V _{DS} =10.0 V, V _{DD} =10.0 V	—	—	0.1	μA	3	
Delay time	td	C _D =4.7 nF	V _{DD} =2.0 V S-80913 to 14	2.7	3.6	4.5	ms	4
			V _{DD} =3.5 V S-80915 to 26	20	27	34		
			V _{DD} =4.5 V S-80927 to 39					
			V _{DD} =6.0 V S-80940 to 54					
			V _{DD} =7.5 V S-80955 to 60					
Temperature coefficient for -V _{DET} *2	$\frac{\Delta - V_{DET}}{\Delta Ta \bullet -V_{DET}}$	Ta=-40°C to +85°C	—	±100	±350	ppm/°C	1	

*1. -V_{DET}; Actual detection voltage

-V_{DET(S)}; Specified detection voltage (The center value of detection voltage range in Table1.1 and Table1.2.)

*2. Temperature change in the detection voltage is calculated by using the following equation.

$$\frac{\Delta - V_{DET}}{\Delta Ta} [\text{mV}/^\circ\text{C}] = -V_{DET(S)} [\text{V}] \times \frac{\Delta - V_{DET}}{\Delta Ta \bullet -V_{DET}} [\text{ppm}/^\circ\text{C}] \div 1000$$



勝特力材料 886-3-5753170
勝特力电子(上海) 86-21-54151736
勝特力电子(深圳) 86-755-83298787
[Http://www.100y.com.tw](http://www.100y.com.tw)

■ **Electrical Characteristics (2)**

Table 6.2

CMOS output products

(Ta=25°C unless otherwise specified)

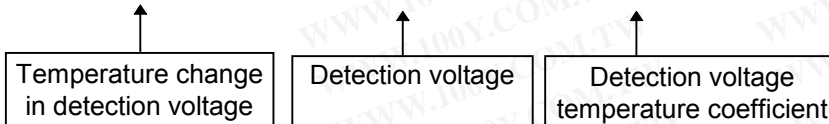
Parameter	Symbol	Conditions		Min.	Typ.	Max.	Unit	Test circuit
Detection voltage *1	-V _{DET}	—		-V _{DET(S)} ×0.98	-V _{DET(S)}	-V _{DET(S)} ×1.02	V	1
Hysteresis width	V _{HYS}	S-80913 to 14		-V _{DET} ×0.03	-V _{DET} ×0.05	-V _{DET} ×0.08	V	1
		S-80915 to 60		-V _{DET} ×0.03	-V _{DET} ×0.05	-V _{DET} ×0.07		
Current consumption	I _{SS}	V _{DD} =2.0 V	S-80913 to 14	—	1.0	2.5	μA	2
		V _{DD} =3.5 V	S-80915 to 26	—	1.1	2.8		
		V _{DD} =4.5 V	S-80927 to 39	—	1.2	3.0		
		V _{DD} =6.0 V	S-80940 to 54	—	1.3	3.3		
		V _{DD} =7.5 V	S-80955 to 60	—	1.4	3.5		
Operating voltage	V _{DD}	—		0.7	—	10.0	V	1
Output current of output transistor	I _{OUT}	N-channel V _{DS} =0.5 V	V _{DD} =0.95 V S-80913 to 14	0.23	0.64	—	mA	3
			V _{DD} =1.2 V S-80915 to 60	0.59	1.36	—		
			V _{DD} =2.4 V S-80927 to 60	2.88	4.98	—		
		P-channel V _{DS} =0.5 V	V _{DD} =4.8 V S-80913 to 39	1.43	2.39	—	mA	5
			V _{DD} =6.0 V S-80940 to 54	1.68	2.78	—		
			V _{DD} =8.4 V S-80955 to 60	2.08	3.42	—		
Delay time	td	C _D =4.7 nF	V _{DD} =2.0 V S-80913 to 14	2.7	3.6	4.5	ms	4
			V _{DD} =3.5 V S-80915 to 26	18	24	30		
			V _{DD} =4.5 V S-80927 to 39					
			V _{DD} =6.0 V S-80940 to 54					
			V _{DD} =7.5 V S-80955 to 60					
Temperature characteristic of -V _{DET} *2	$\frac{\Delta - V_{DET}}{\Delta Ta \bullet -V_{DET}}$	Ta=-40°C to +85°C		—	±100	±350	ppm/°C	1

*1. -V_{DET}; Actual detection voltage

-V_{DET(S)}; Specified detection voltage (The center value of the detection voltage range in Table1.1 and Table1.2.)

*2. Temperature change in the detection voltage is calculated by using the following equation.

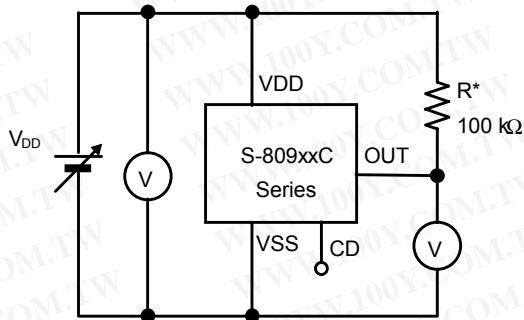
$$\frac{\Delta - V_{DET}}{\Delta Ta} [mV/°C] = -V_{DET(S)} [V] \times \frac{\Delta - V_{DET}}{\Delta Ta \bullet -V_{DET}} [ppm/°C] \div 1000$$



勝特力材料 886-3-5753170
 勝特力电子(上海) 86-21-54151736
 勝特力电子(深圳) 86-755-83298787
[Http://www.100y.com.tw](http://www.100y.com.tw)

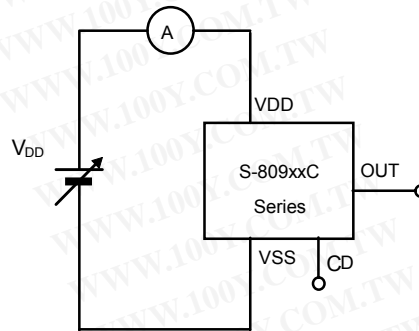
■ Test Circuits

(1)

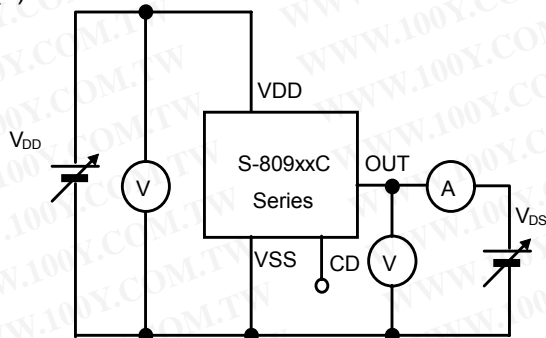


* R is unnecessary for CMOS output products.

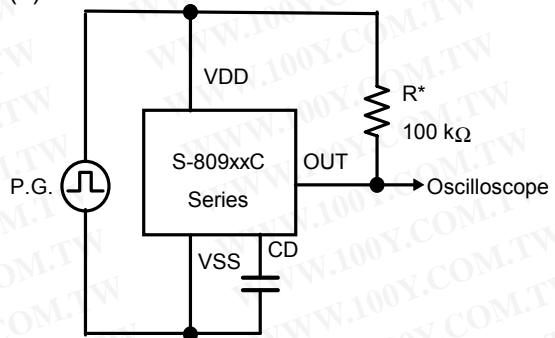
(2)



(3)



(4)



* R is unnecessary for CMOS output products.

(5)

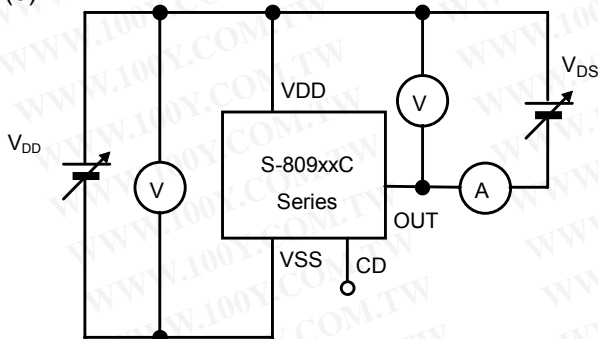


Figure 6

勝特力材料 886-3-5753170
 勝特力电子(上海) 86-21-54151736
 勝特力电子(深圳) 86-755-83298787
[Http://www.100y.com.tw](http://www.100y.com.tw)

■ Timing chart

1) Nch open-drain active low output

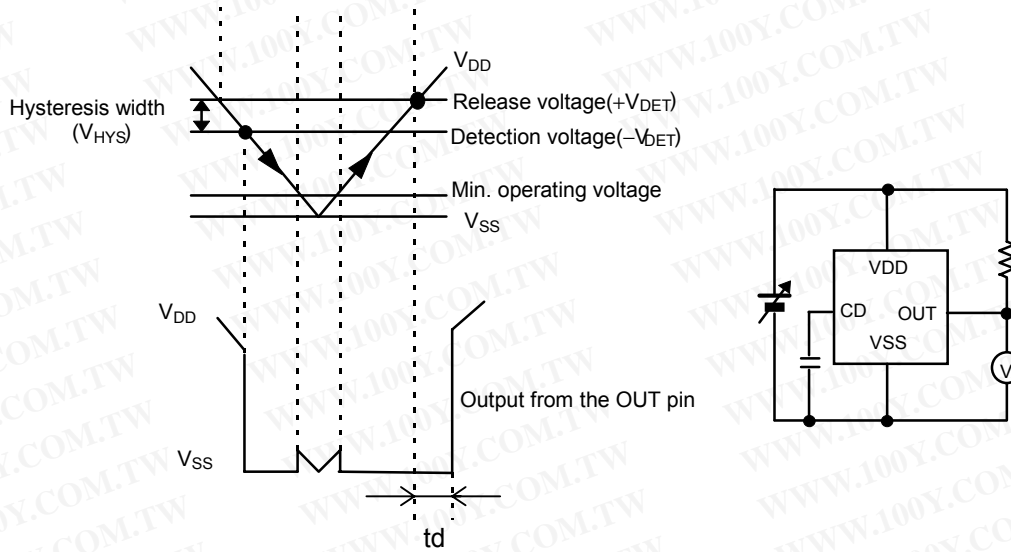
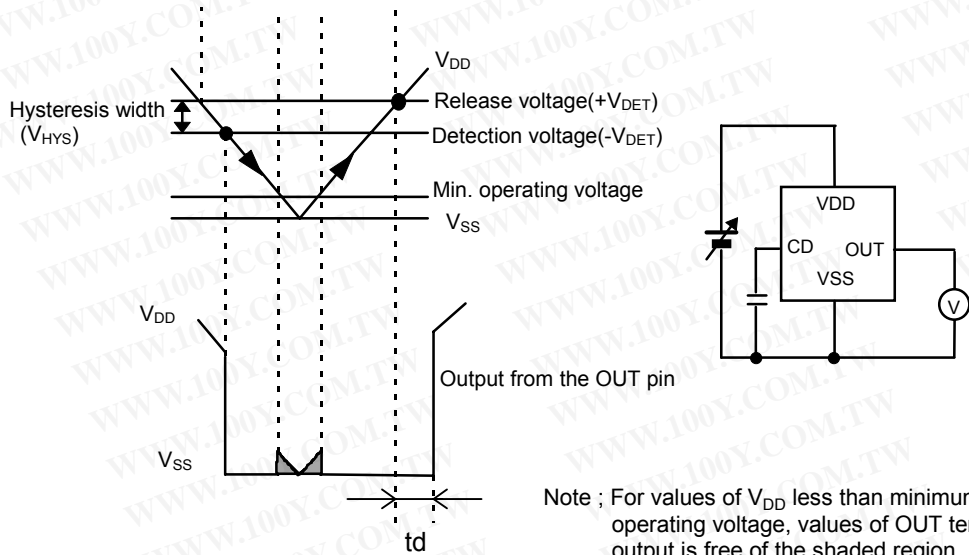


Figure 7

2) CMOS active low output



Note ; For values of V_{DD} less than minimum operating voltage, values of OUT terminal output is free of the shaded region.

Figure 8

勝特力材料 886-3-5753170
 勝特力电子(上海) 86-21-54151736
 勝特力电子(深圳) 86-755-83298787
[Http://www.100y.com.tw](http://www.100y.com.tw)

勝特力材料 886-3-5753170
 勝特力电子(上海) 86-21-54151736
 勝特力电子(深圳) 86-755-83298787
[Http://www.100y.com.tw](http://www.100y.com.tw)

■ Definition of Technical Terms

1. Detection voltage ($-V_{DET}$)

Detection voltage $-V_{DET}$ is a voltage at which the output turns to low. This detection voltage varies slightly among products of the same specification. The variation of detection voltage between the specified minimum [$(-V_{DET})_{min.}$] and maximum [$(-V_{DET})_{max.}$] is called the detection voltage range (See Figure 9).

Example : For the S-80927CN, detection voltage lies in the range of $2.646 \leq (-V_{DET}) \leq 2.754$. This means that some S-80927CNs have 2.646 V for $-V_{DET}$ and some have 2.754 V.

2. Release voltage ($+V_{DET}$)

Release voltage $+V_{DET}$ is a voltage at which the output turns to high. This release voltage varies slightly among products of the same specification. The variation of release voltage between the specified minimum [$(+V_{DET})_{min.}$] and maximum [$(+V_{DET})_{max.}$] is called the release voltage range (See Figure 10). The range is calculated from the actual detection voltage $-V_{DET}$ of a product and is expressed by $-V_{DET} \times 1.03 \leq +V_{DET} \leq -V_{DET} \times 1.08$ for S-80913 to S-80914, and by $-V_{DET} \times 1.03 \leq +V_{DET} \leq -V_{DET} \times 1.07$ for S-80915 to S-80960.

Example : For the S-80927CN, the release voltage lies in the range of $2.725 \leq (+V_{DET}) \leq 2.947$. This means that some S-80927CNs have 2.725 V for $+V_{DET}$ and some have 2.947 V.

Remark: Although the detection voltage and release voltage overlap in the range of 2.725 V to 2.754 V, $+V_{DET}$ is always larger than $-V_{DET}$.

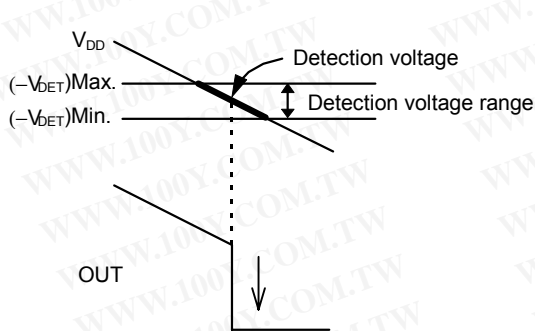


Figure 9

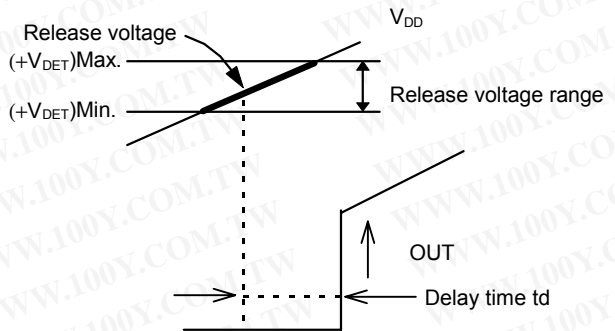


Figure 10

3. Hysteresis width (V_{HYS})

Hysteresis width is the voltage difference between the detection voltage and the release voltage. The existence of the hysteresis width avoids malfunction caused by noise on input signal.

4. Delay time (t_d)

Delay time is a time internally measured from the instant at which V_{DD} pin exceeds the release voltage ($+V_{DET}$) to the point at which the output of the OUT pin inverts. The delay time changes according to the external capacitor C_D .

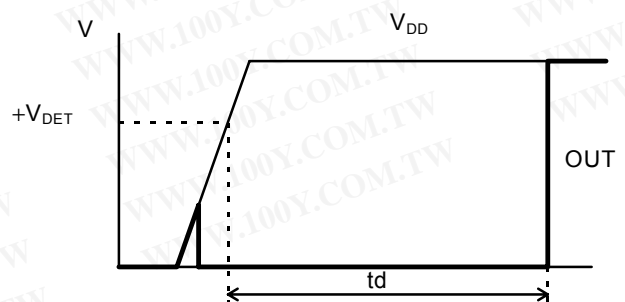


Figure 11

5. Short-circuit current

Short-circuit current refers to the current which flows instantaneously at the time of detection and release of a voltage detector. Short-circuit current is large in CMOS output products, and small in N channel open-drain output products.

6. Oscillation

In applications where a resistor is connected to the voltage detector input as shown in Figure 12, taking a CMOS active low product for example, the short-circuit current, which flows at release when the output goes from low to high, causes a voltage drop equal to [short-circuit current] × [input resistance] across the resistor. When the input voltage falls below the detection voltage $-V_{DET}$ as a result, the output voltage goes to low level. In this state, the short-circuit current stops and its resultant voltage drop disappears, and the output goes from low to high. Short-circuit current again starts flowing, a voltage drop appears, and oscillation is finally induced by repeating the process.

Following is an example for bad implementation: input voltage divider for a CMOS output product.

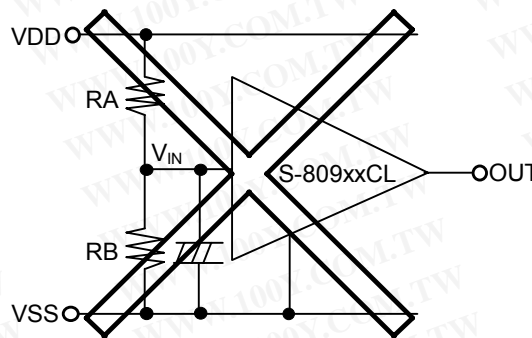
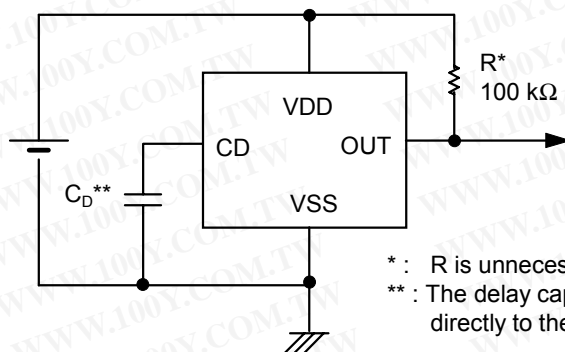


Figure 12 An example for bad implementation

■ Standard Circuit



勝特力材料 886-3-5753170
 勝特力电子(上海) 86-21-54151736
 勝特力电子(深圳) 86-755-83298787
[Http://www.100y.com.tw](http://www.100y.com.tw)

* : R is unnecessary for CMOS output products.
 ** : The delay capacitor C_D should be connected directly to the CD pin and to the VSS pin.

Figure 13

■ Operation

1. Basic operation : CMOS active low output

(1) When the power supply voltage V_{DD} is higher than the release voltage $+V_{DET}$, the N-channel transistor is off and the P-channel transistor is on to provide V_{DD} (high) at the output. Since the N-channel transistor N1 in Figure 14 is off, the comparator input voltage is $(RB+RC)/(RA+RB+RC) \times V_{DD}$.

- (2) When the V_{DD} goes below $+V_{DET}$, the output provides the V_{DD} level, as long as the V_{DD} remains above the detection voltage $-V_{DET}$. When the V_{DD} falls below $-V_{DET}$ (point A in Figure 15), the N-channel transistor becomes on, the P-channel transistor becomes off, and the V_{SS} level appears at the output. At this time the N-channel transistor N1 in Figure 14 becomes on, the comparator input voltage is changed to $RB/(RA+RB) \times V_{DD}$.
- (3) When the V_{DD} falls below the minimum operating voltage, the output becomes undefined, or goes to the V_{DD} when the output is pulled up to the V_{DD} .
- (4) The V_{SS} level appears when the V_{DD} rises above the minimum operating voltage. The V_{SS} level still appears even when the V_{DD} surpasses $-V_{DET}$, as long as it does not exceed the release voltage $+V_{DET}$.
- (5) When V_{DD} rises above $+V_{DET}$ (point B in Figure 15), the N-channel transistor goes off, the P-channel transistor goes on, and V_{DD} appears at the output after the delay time t_d counted by the delay circuit.

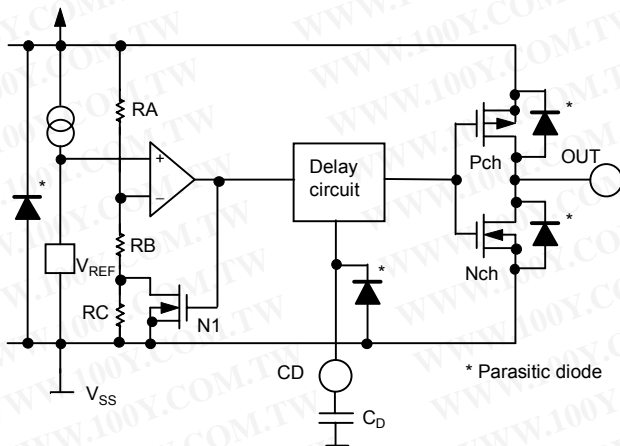


Figure 14

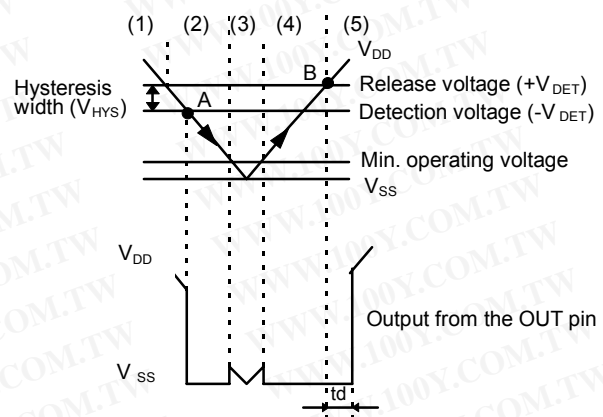


Figure 15

勝特力材料 886-3-5753170
勝特力电子(上海) 86-21-54151736
勝特力电子(深圳) 86-755-83298787
[Http://www.100y.com.tw](http://www.100y.com.tw)

2. Delay circuit

The delay circuit delays the output signal from the time at which the power voltage V_{DD} exceeds the release voltage ($+V_{DET}$) when V_{DD} is turned on. The output signal is not delayed when the V_{DD} goes below the detection voltage ($-V_{DET}$). See Figure 15. The delay time(t_d) is determined by the time constant of the built-in constant current (approx. 100 nA) and the attached external capacitor (C_D), and calculated from the following equation.

$$t_d \text{ (ms)} = \text{Delay coefficient} \times C_D \text{ (nF)}$$

Delay coefficient: (25°C)

Detection voltage $-V_{DET} \leq 1.4 \text{ V}$	Min. 0.57, Typ. 0.77, Max. 0.96
Detection voltage $-V_{DET} \geq 1.5 \text{ V}$	Open-drain output : Min. 4.3, Typ. 5.7, Max. 7.2
	CMOS output : Min. 3.8, Typ. 5.1, Max. 6.4

Caution 1. When the CD pin is open, a double pulse shown in Figure 16 may appear at release.

To avoid the double pulse, attach 20 pF or larger capacitor to the CD pin.

Do not apply voltage to the CD pin.

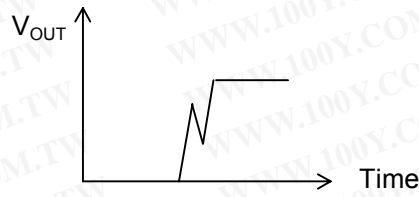


Figure 16

2. Print circuit board layout should be made in such a way that no current flows into or flows from the CD pin since the impedance of the CD pin is high, otherwise correct delay time can not be provided.
3. There is no limit for the capacitance of the external capacitor CD as long as the leakage current of the capacitor can be ignored against the built-in constant current value. Leakage current causes deviation in delay time. When the leakage current is larger than the built-in constant current, no release takes place.

3. Other characteristics

(1) Temperature characteristic of detection voltage

The temperature characteristics of the detection voltage are expressed by the shaded parts in Figure 17

ex) ;S-80927C:

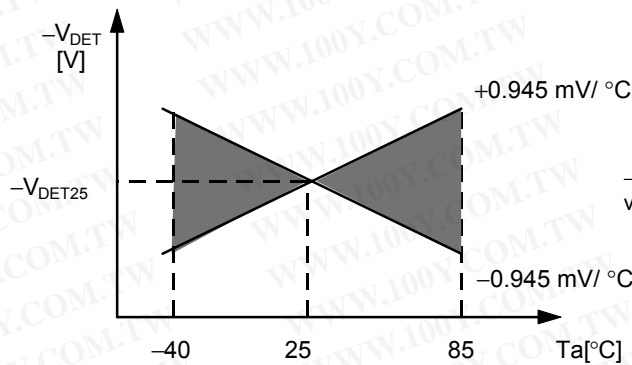


Figure 17

$-V_{DET25}$ is an actual detection voltage value at 25°C.

(2) Temperature characteristics of release voltage

The temperature coefficient $\left(\frac{\Delta + V_{DET}}{\Delta Ta}\right)$ for the release voltage is calculated by the temperature coefficient for the detection voltage $\left(\frac{\Delta - V_{DET}}{\Delta Ta}\right)$ as follows:

$$\left(\frac{\Delta + V_{DET}}{\Delta Ta}\right) = \frac{+V_{DET}}{-V_{DET}} \times \frac{\Delta - V_{DET}}{\Delta Ta}$$

The temperature coefficient for the release voltage has hence the same sign as the temperature coefficient for the detection voltage.

勝特力材料 886-3-5753170
 勝特力电子(上海) 86-21-54151736
 勝特力电子(深圳) 86-755-83298787
[Http://www.100y.com.tw](http://www.100y.com.tw)

(3) Temperature characteristics of hysteresis voltage

The temperature coefficient for the hysteresis voltage $\frac{\Delta + V_{DET}}{\Delta T_a} - \frac{\Delta - V_{DET}}{\Delta T_a}$ is calculated as follows:

$$\frac{\Delta + V_{DET}}{\Delta T_a} - \frac{\Delta - V_{DET}}{\Delta T_a} = \frac{V_{HYS}}{-V_{DET}} \times \frac{\Delta - V_{DET}}{\Delta T_a}$$

■ **Notes**

- In CMOS output products of the S-809xxC series, the short-circuit current flows at the detection and the release. If the input impedance is high, oscillation may occur due to the voltage drop by the short-circuit current during releasing.
- When designing for mass production using an application circuit described herein, parts deviation and temperature characteristics should be taken into consideration.
- Do not apply an electrostatic discharge to this IC that exceeds the performance ratings of the built-in electrostatic protection circuit.
- Seiko Instruments Inc. shall not bear any responsibility for the patents on the circuits described herein.

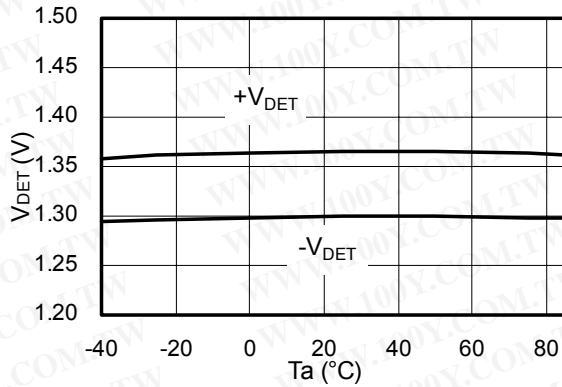
勝特力材料 886-3-5753170
勝特力电子(上海) 86-21-54151736
勝特力电子(深圳) 86-755-83298787
Http://www.100y.com.tw

勝特力材料 886-3-5753170
 勝特力电子(上海) 86-21-54151736
 勝特力电子(深圳) 86-755-83298787
[Http://www.100y.com.tw](http://www.100y.com.tw)

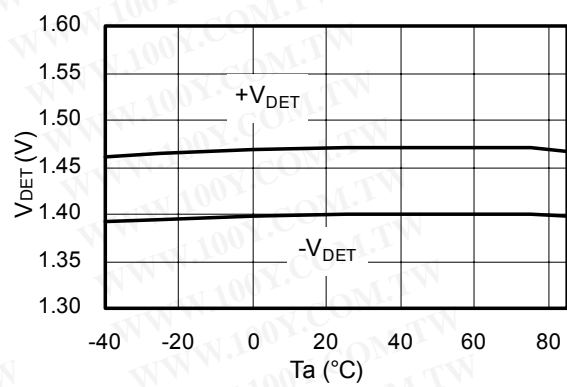
■ **Typical Characteristics**

(1) Detection voltage (V_{DET}) - Temperature (T_a)

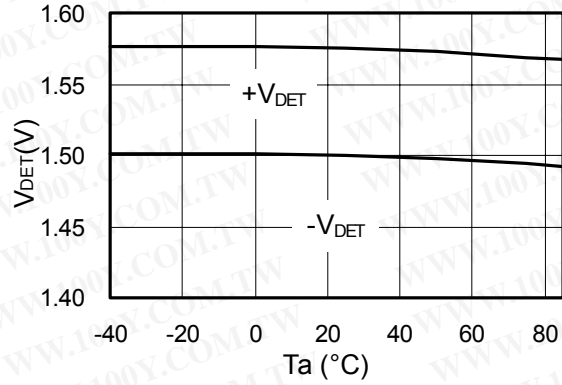
S-80913CN



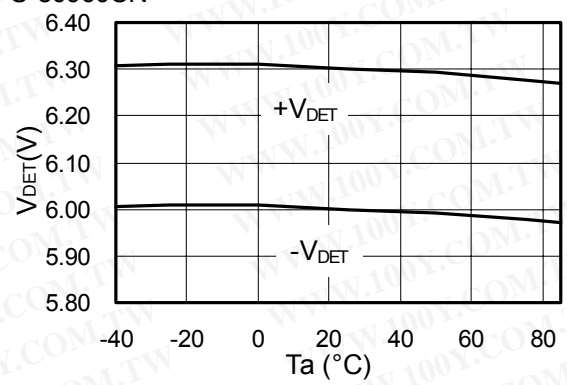
S-80914CN



S-80915CN

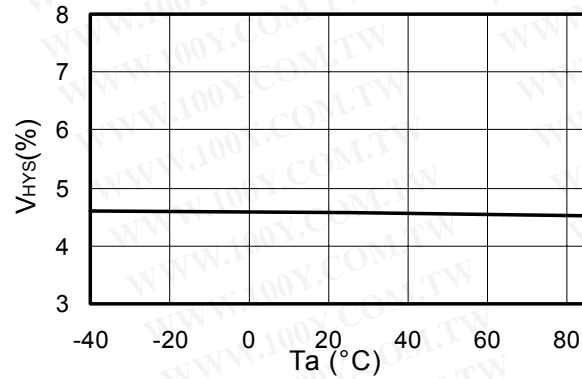


S-80960CN

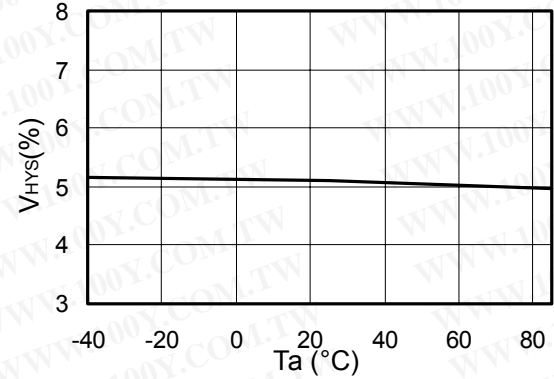


(2) Hysteresis voltage width (V_{HYS}) - Temperature (T_a)

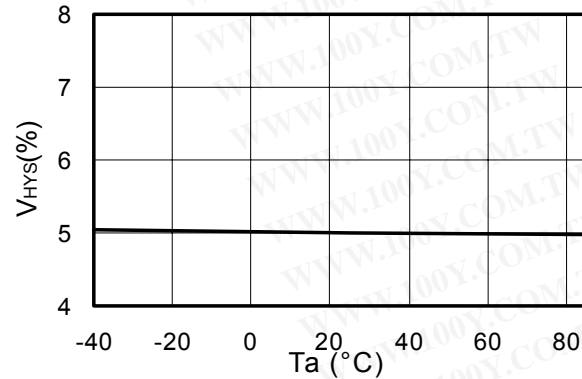
S-80913CN



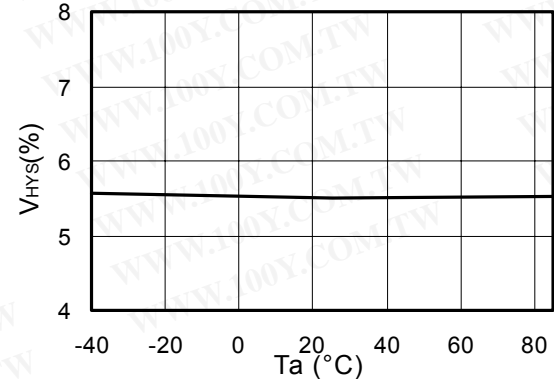
S-80914CN



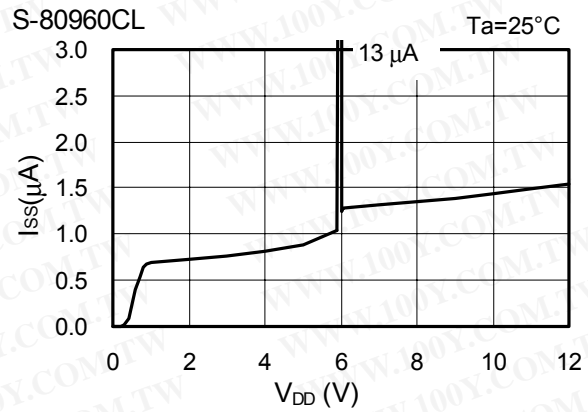
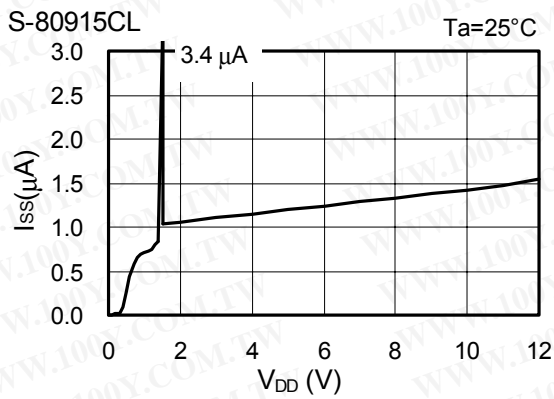
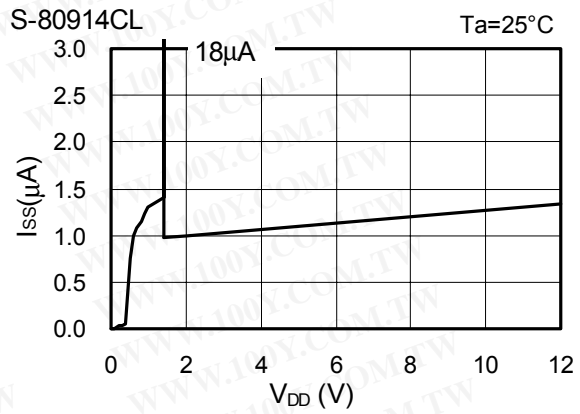
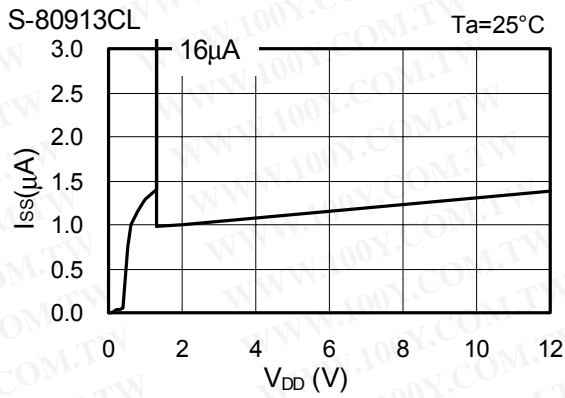
S-80915CN



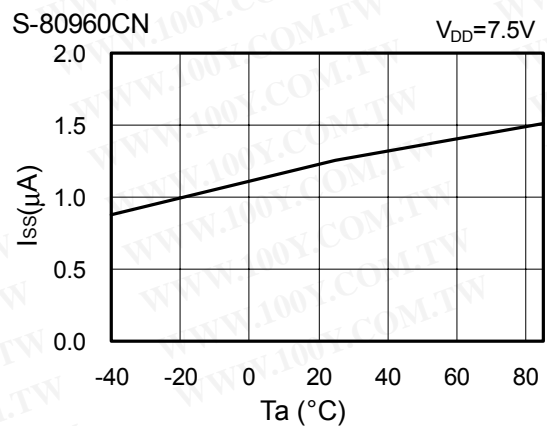
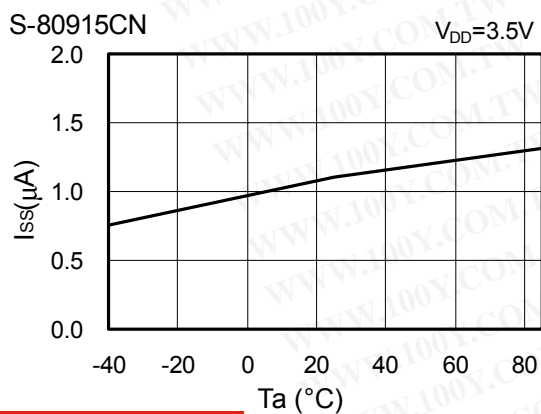
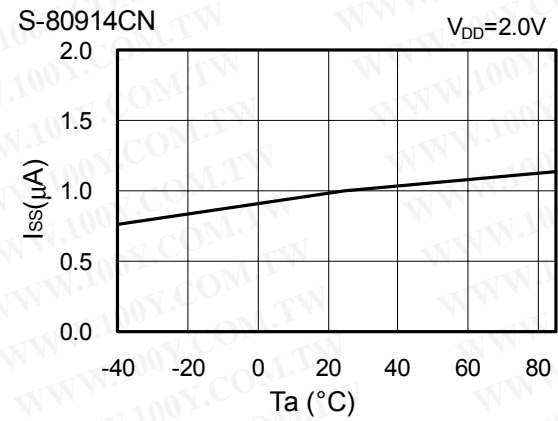
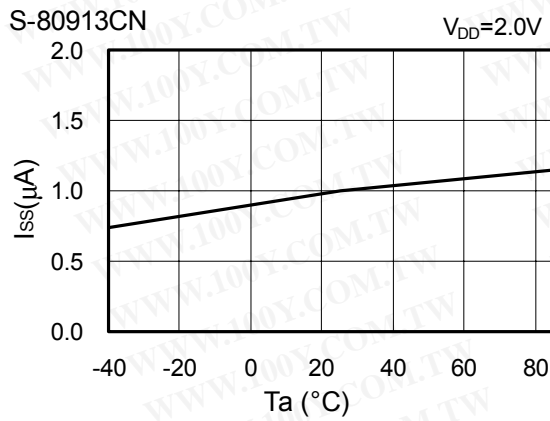
S-80960CN



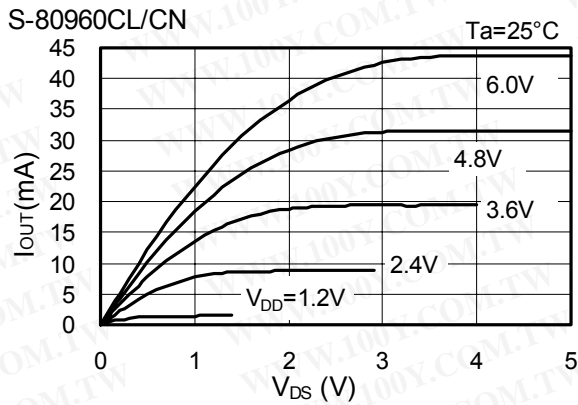
(3) Current consumption (I_{SS}) - Input voltage (V_{DD})



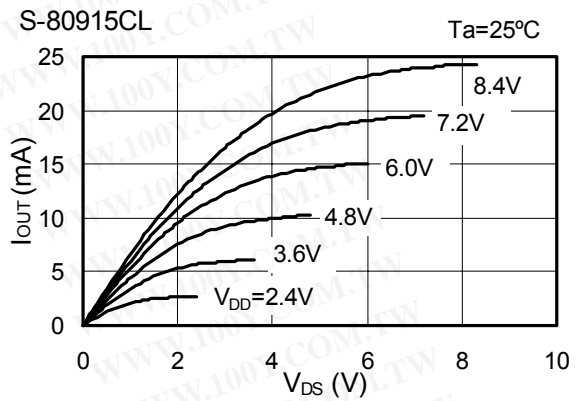
(4) Current consumption (I_{SS}) - Temperature (T_a)



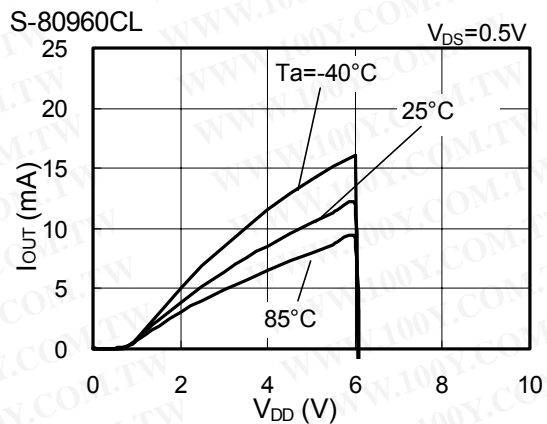
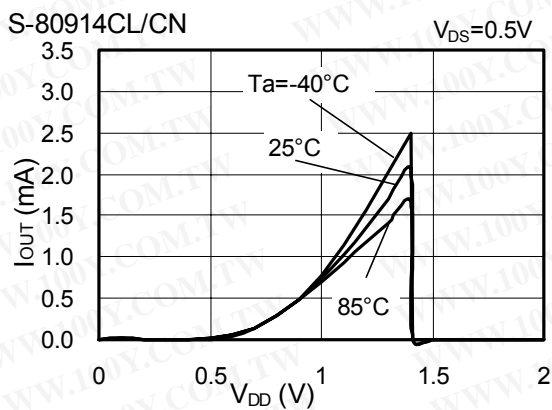
(5) Nch transistor output current (I_{OUT}) - V_{DS}



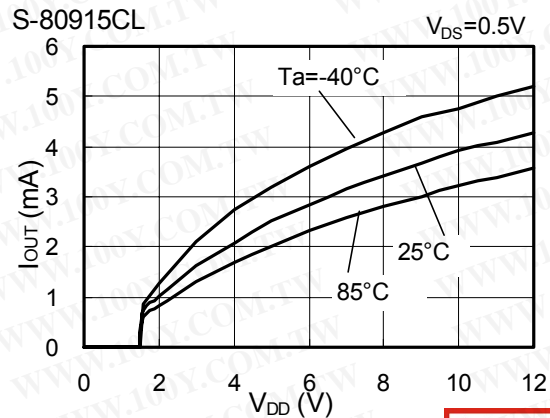
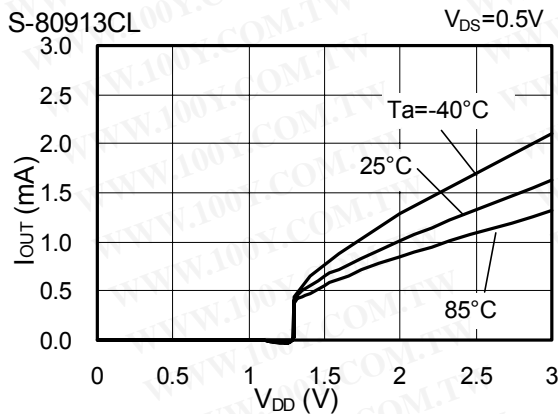
(6) Pch transistor output current (I_{OUT}) - V_{DS}



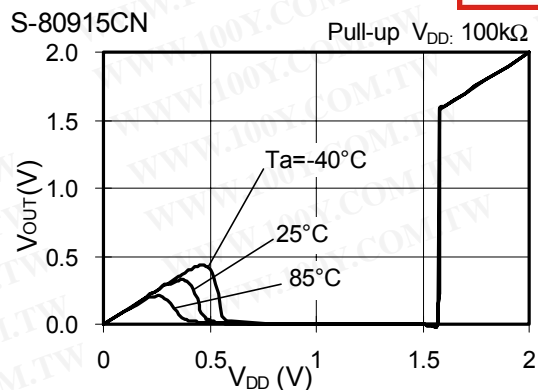
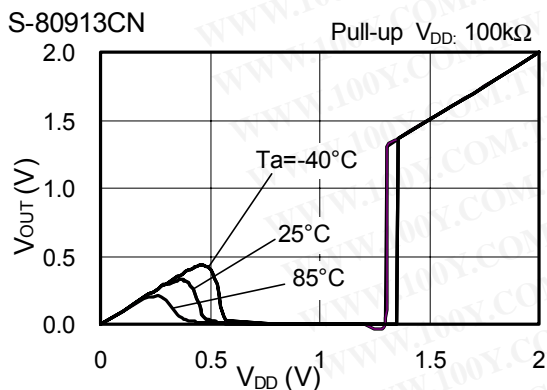
(7) Nch transistor output current (I_{OUT}) - Input voltage (V_{DD})



(8) Pch transistor output current (I_{OUT}) - Input voltage (V_{DD})



(9) Minimum operating voltage - Input voltage (V_{DD})

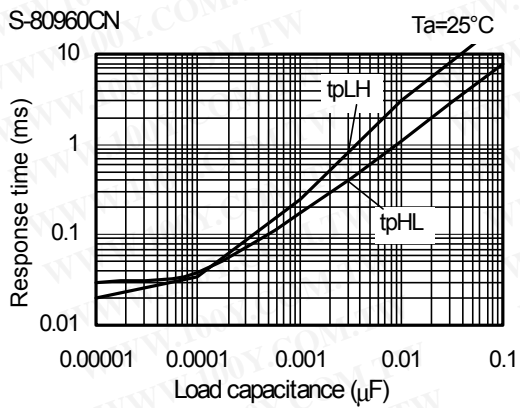
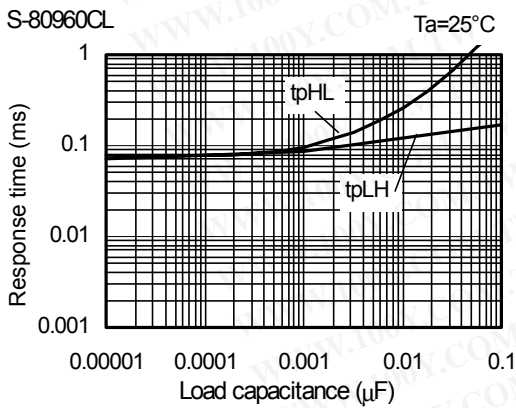
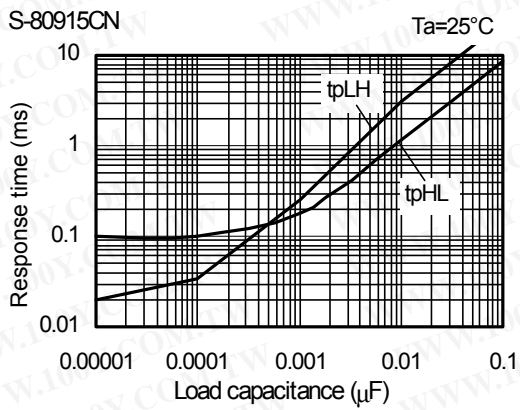
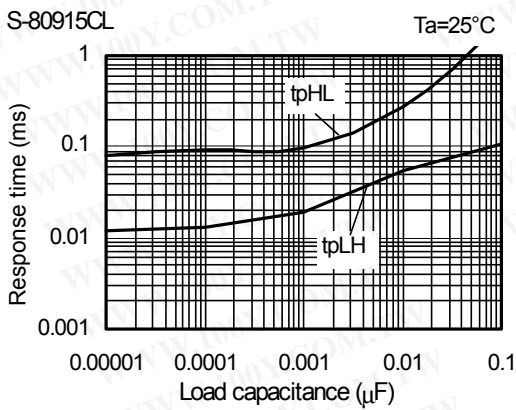
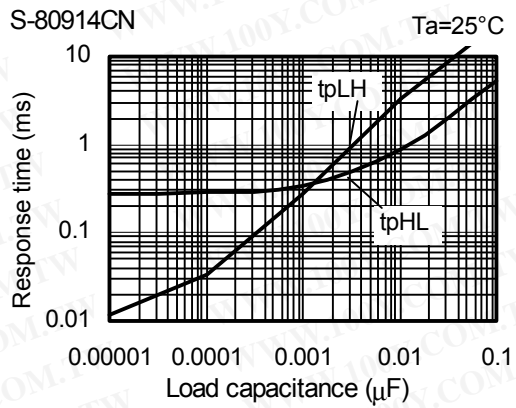
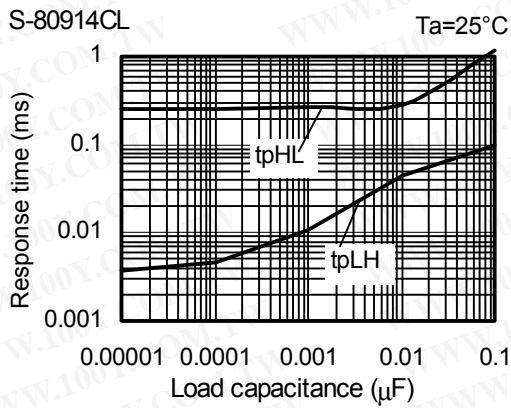
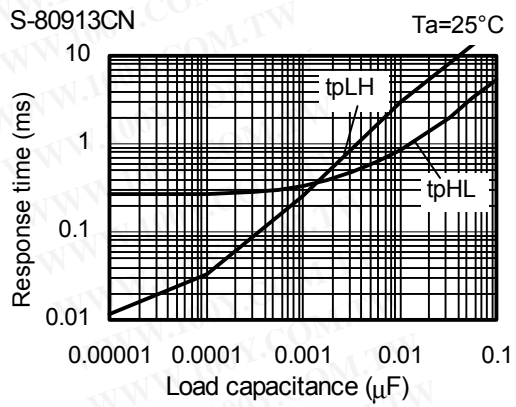
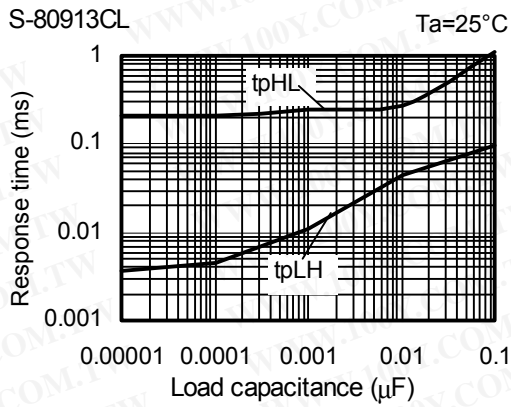


勝特力材料 886-3-5753170
 勝特力电子(上海) 86-21-54151736
 勝特力电子(深圳) 86-755-83298787
[Http://www.100y.com.tw](http://www.100y.com.tw)

BUILT-IN DELAY CIRCUIT HIGH-PRECISION VOLTAGE DETECTOR
S-809xxC Series

Rev.1.2_30

(10) Dynamic response - C_{OUT} (CD pin; open)



勝特力材料 886-3-5753170
勝特力电子(上海) 86-21-54151736
勝特力电子(深圳) 86-755-83298787
[Http://www.100y.com.tw](http://www.100y.com.tw)

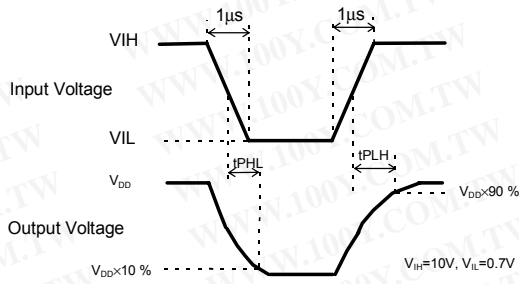
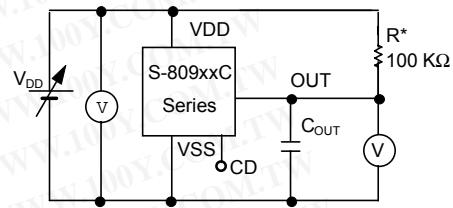


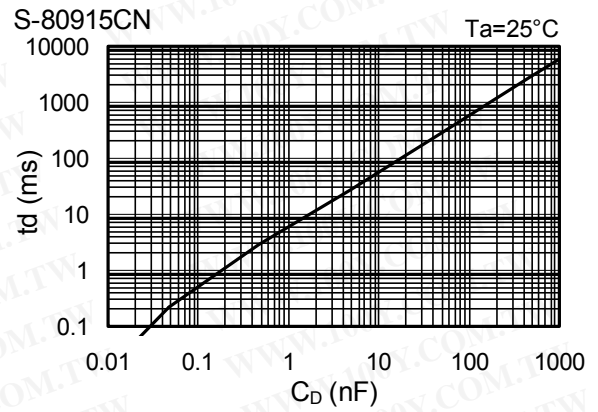
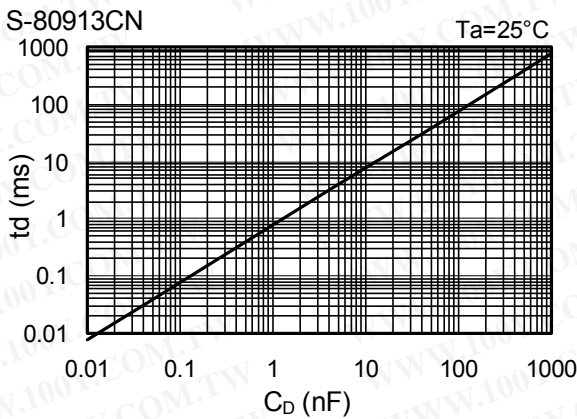
Figure 18 Measurement condition for response time



**"R" is not needed for CMOS output products.

Figure 19 Measurement circuit for response time

(11) Delay time - CD pin capacitance characteristics(C_D)(No output pin capacitance)



(12) Delay time - Temperature characteristics(T_a)

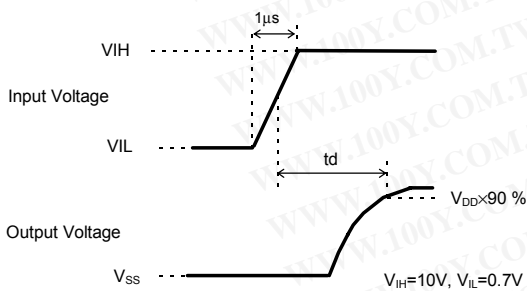
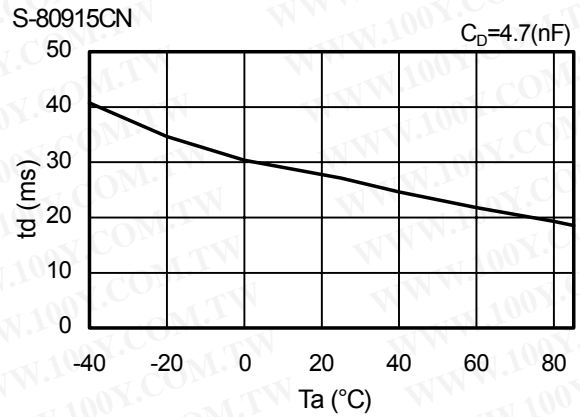
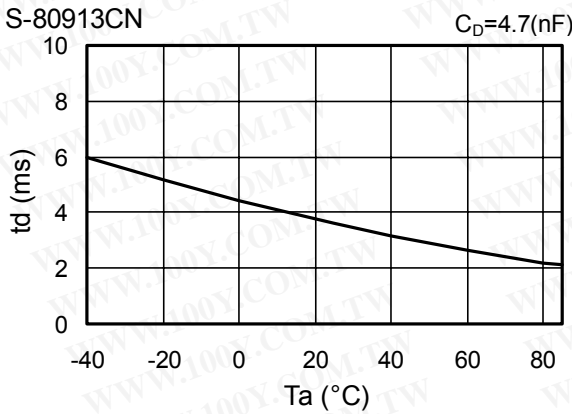
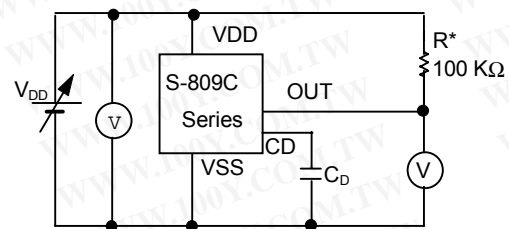


Figure 20 Measuring conditions of delay time



**"R" is not needed for CMOS output products.

Figure 21 Measurement circuit for delay time

Application Circuit Examples

1. Microcomputer reset circuits

With the S-809xxC Series which has a low operating voltage, a high-precision detection voltage and hysteresis characteristic, the reset circuits shown in Figures 22 to 23 can be easily constructed.

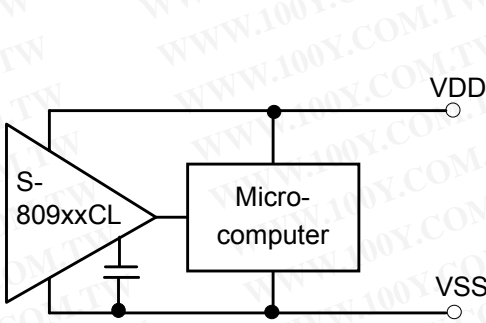
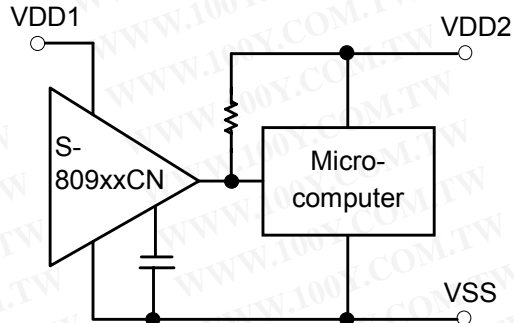


Figure 22

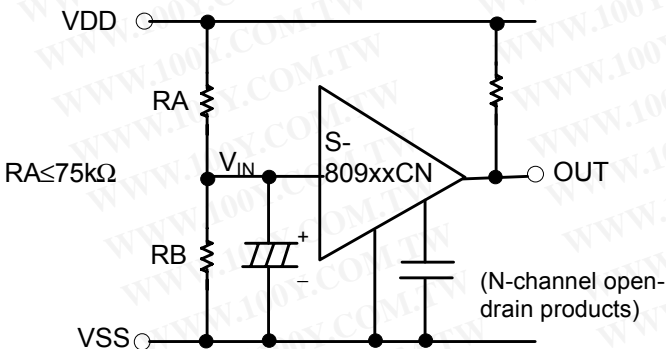


(Nch open-drain output products only)

Figure 23

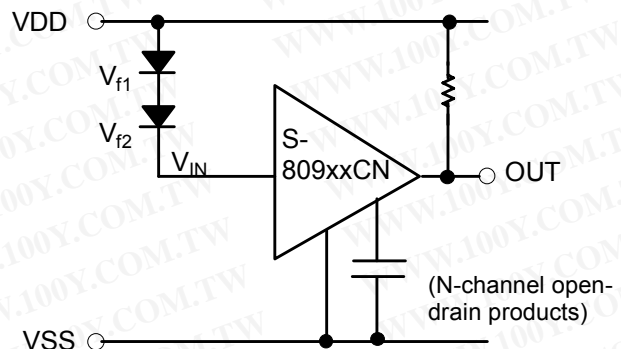
2. Change of detection voltage

In Nch open-drain output products of the S-809xxC Series, detection voltage can be changed using resistance dividers or diodes as shown in Figures 24 and 25. In Figure 24, hysteresis width is also changed.



$$\text{Detection voltage} = \frac{RA+RB}{RB} \cdot -V_{DET}$$

$$\text{Hysteresis width} = \frac{RA+RB}{RB} \cdot V_{HYS}$$



$$\text{Detection voltage} = V_{f1} + V_{f2} + (-V_{DET})$$

Figure 25

Note1: If RA and RB are large, the hysteresis width may also be larger than the value given by the equation above due to short-circuit current (which flows slightly in an N channel open-drain product).

Note2: RA should be 75k Ω or less to prevent oscillation.

Figure 24

勝特力材料 886-3-5753170
勝特力电子(上海) 86-21-54151736
勝特力电子(深圳) 86-755-83298787
[Http://www.100y.com.tw](http://www.100y.com.tw)

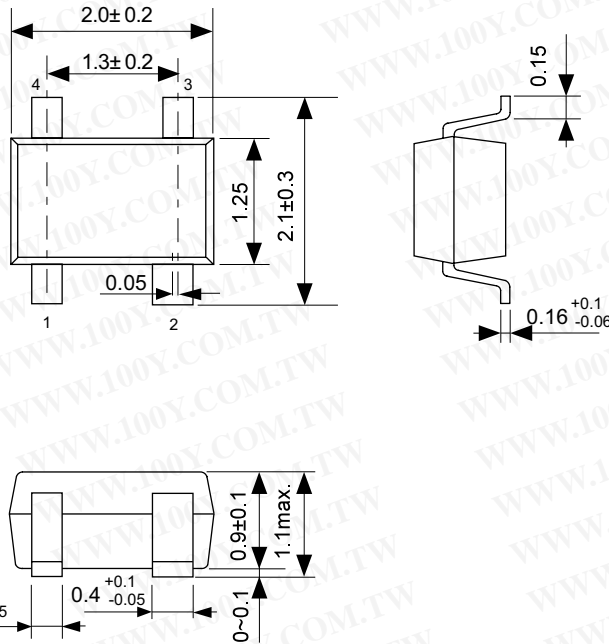
SC-82AB

Dimensions

勝特力材料 886-3-5753170
 勝特力电子(上海) 86-21-54151736
 勝特力电子(深圳) 86-755-83298787
[Http://www.100y.com.tw](http://www.100y.com.tw)

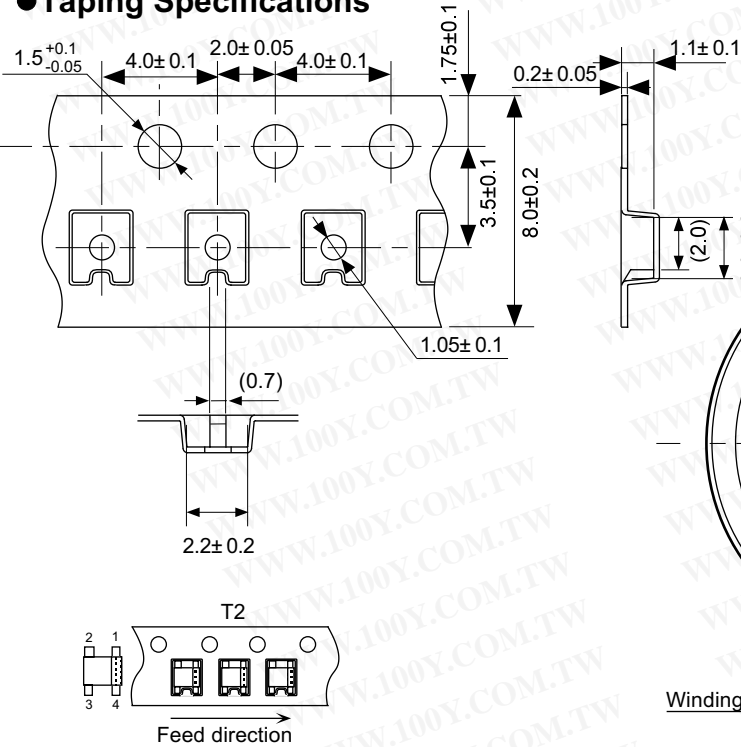
NP004-A Rev.1.0 020109

Unit:mm



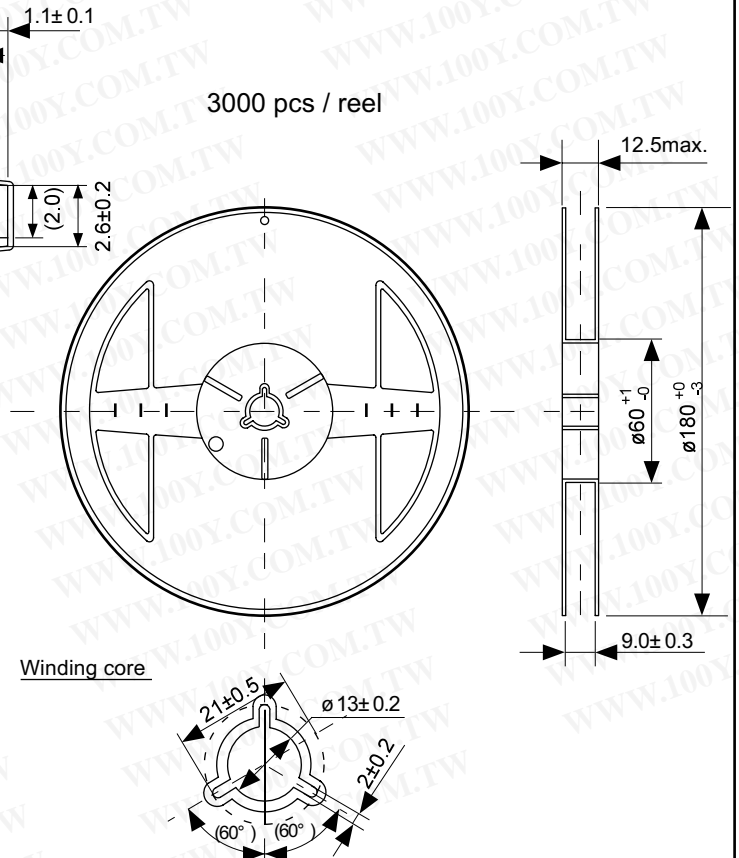
No. NP004-A-P-SD-1.0

Taping Specifications



No. NP004-A-C-SD-1.0

Reel Specifications



No. NP004-A-R-SD-1.0

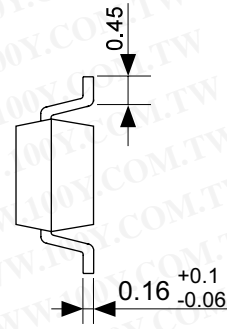
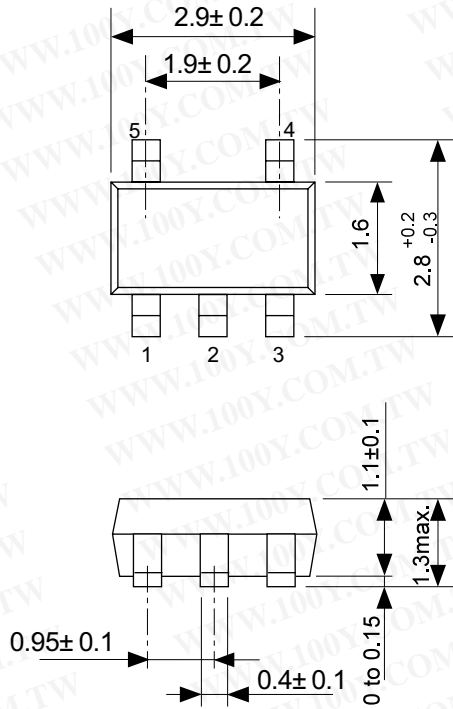
SOT-23-5

MP005-A

010907

● Dimensions

Unit : mm

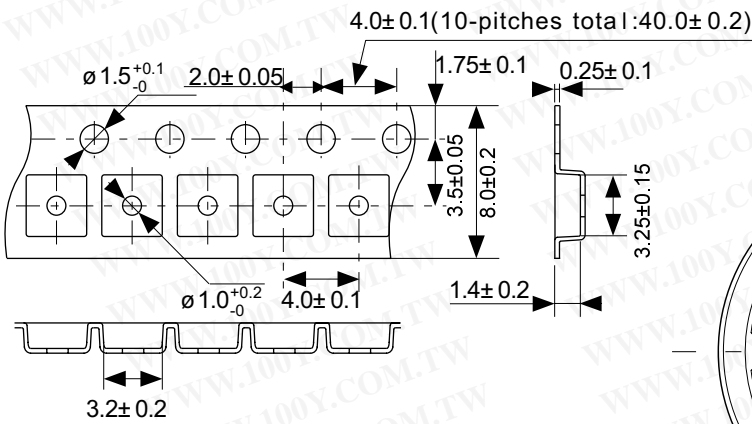


勝特力材料 886-3-5753170
 勝特力电子(上海) 86-21-54151736
 勝特力电子(深圳) 86-755-83298787
[Http://www.100y.com.tw](http://www.100y.com.tw)

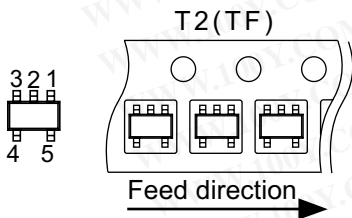
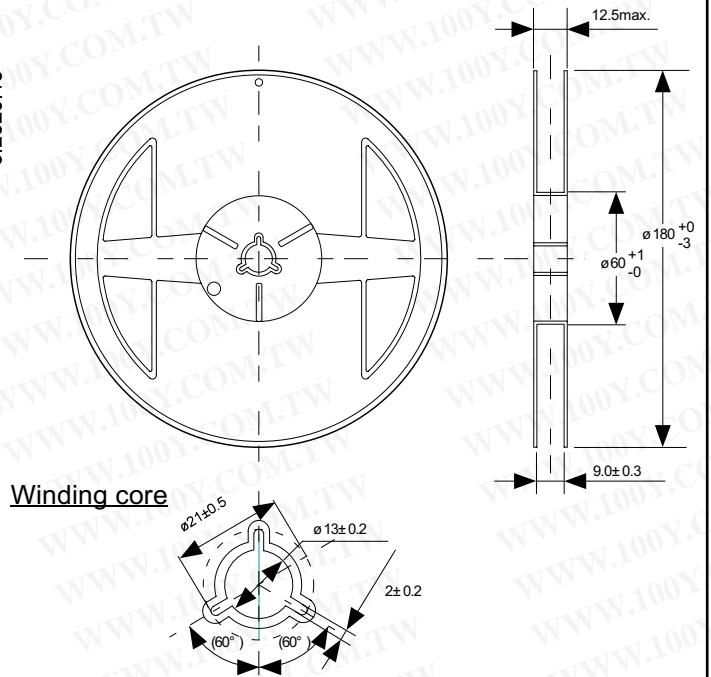
No. MP005-A-P-SD-1.1

● Tape Specifications

● Reel Specifications



3000 pcs./reel



No. : MP005-A-C-SD-2.0

No. MP005-A-R-SD-1.0

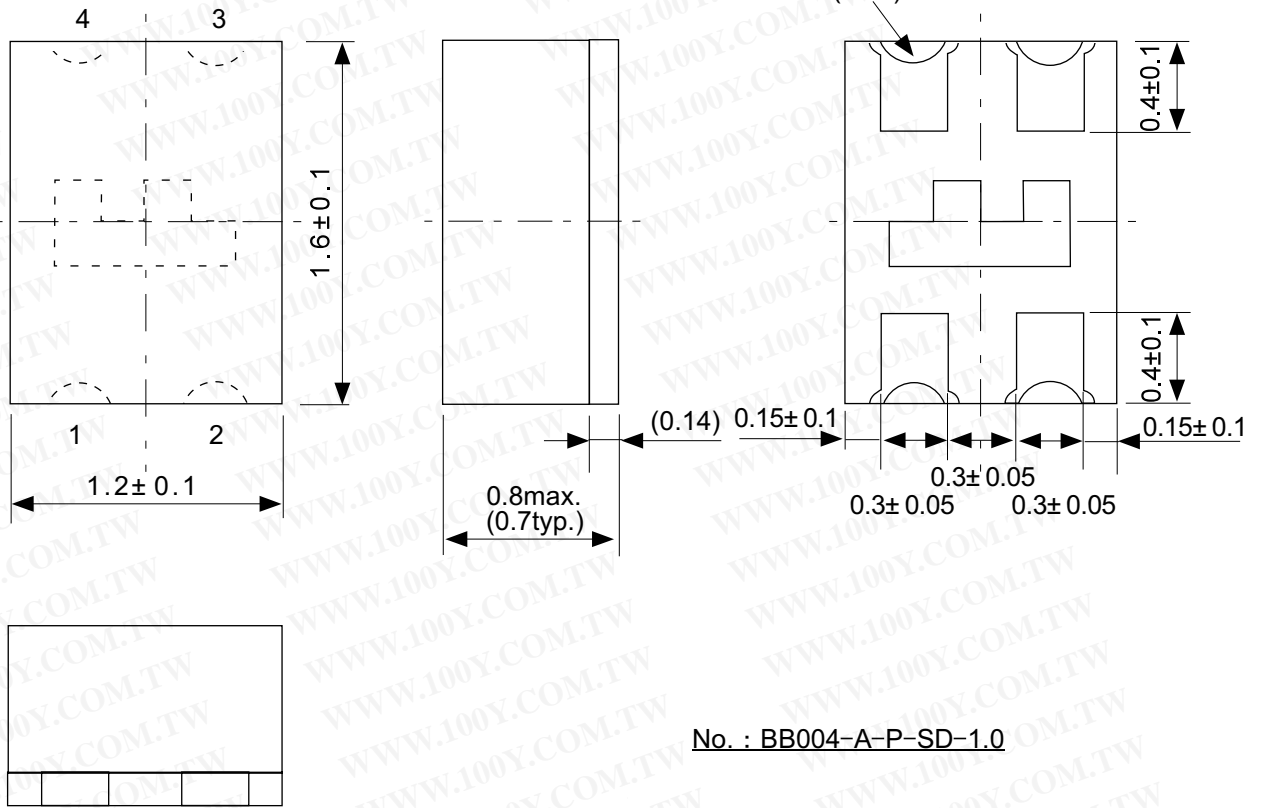
4-Pin SNB(B) [SNB4B(1216)]

BB004-A

010801

Unit : mm

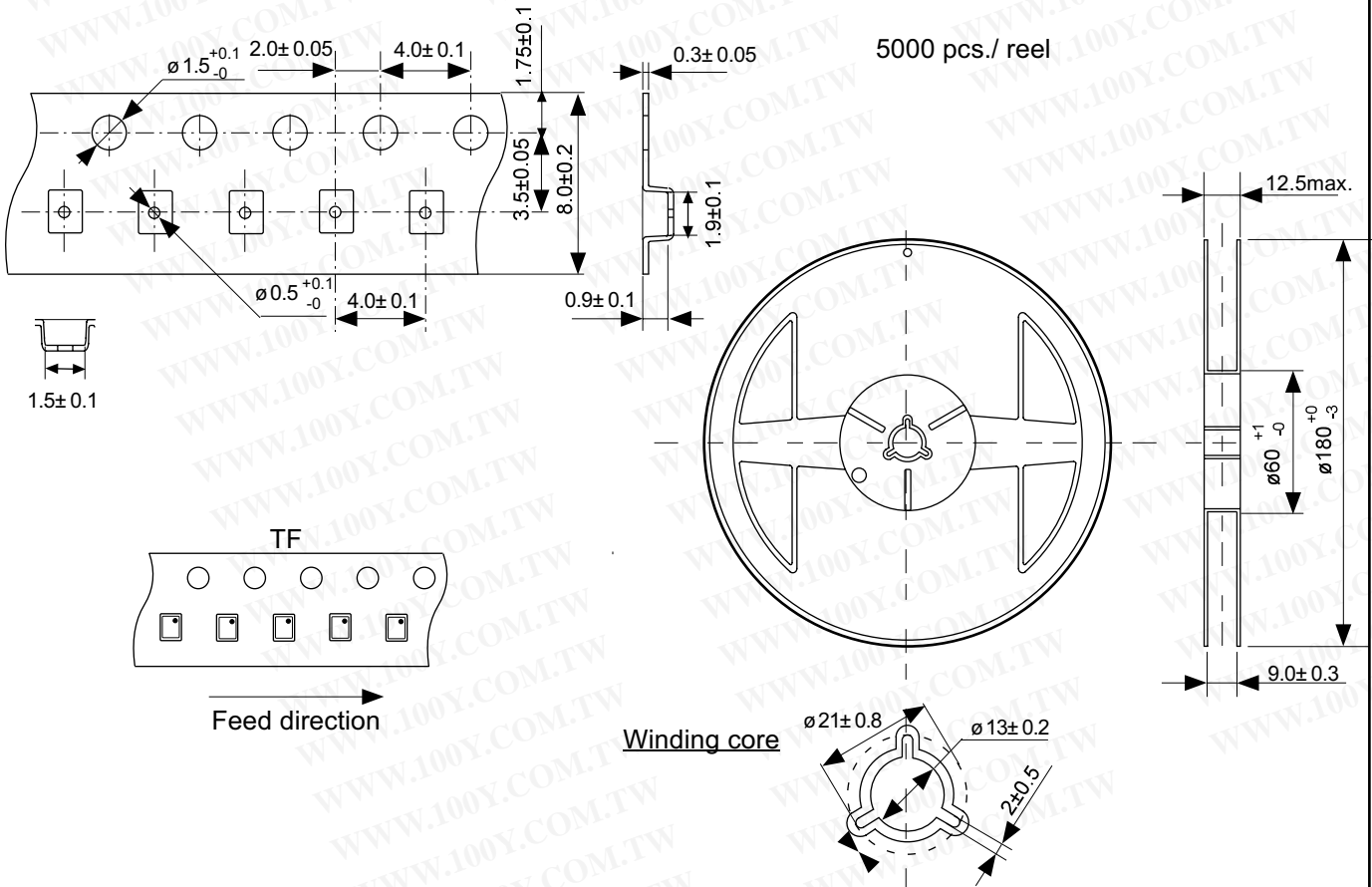
● Dimensions



No. : BB004-A-P-SD-1.0

● Tape Specifications

● Reel Specifications



No. : BB004-A-C-SD-1.0

No. : BB004-A-R-SD-1.0

勝特力材料 886-3-5753170
 勝特力电子(上海) 86-21-54151736
 勝特力电子(深圳) 86-755-83298787
[Http://www.100y.com.tw](http://www.100y.com.tw)

勝特力材料 886-3-5753170
勝特力电子(上海) 86-21-54151736
勝特力电子(深圳) 86-755-83298787
[Http://www.100y.com.tw](http://www.100y.com.tw)

- The information described herein is subject to change without notice.
- Seiko Instruments Inc. is not responsible for any problems caused by circuits or diagrams described herein whose related industrial properties, patents, or other rights belong to third parties. The application circuit examples explain typical applications of the products, and do not guarantee the success of any specific mass-production design.
- When the products described herein are regulated products subject to the Wassenaar Arrangement or other agreements, they may not be exported without authorization from the appropriate governmental authority.
- Use of the information described herein for other purposes and/or reproduction or copying without the express permission of Seiko Instruments Inc. is strictly prohibited.
- The products described herein cannot be used as part of any device or equipment affecting the human body, such as exercise equipment, medical equipment, security systems, gas equipment, or any apparatus installed in airplanes and other vehicles, without prior written permission of Seiko Instruments Inc.
- Although Seiko Instruments Inc. exerts the greatest possible effort to ensure high quality and reliability, the failure or malfunction of semiconductor products may occur. The user of these products should therefore give thorough consideration to safety design, including redundancy, fire-prevention measures, and malfunction prevention, to prevent any accidents, fires, or community damage that may ensue.