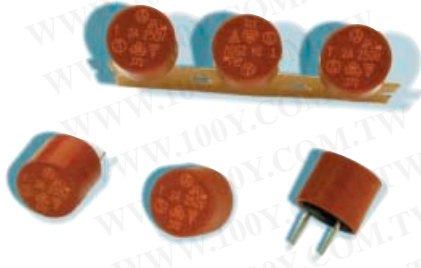


No. 372 / TR5®

IEC 60127-3/IV, 250V, T

Specifications



Time-Current Characteristic

Time Lag (T)
Standard
 IEC 60127-3/IV

Approvals
 VDE
 SEMKO
 cULus Recognized
 METI
 CCC

Features

- Reduced PCB space requirements
- Direct solderable or plug-in versions
- Internationally approved
- Low internal resistance
- Shocksafe casing
- Halogen free

WebLinks

Further info see:
www.wickmann.com

Further application infos see
Fuseology:
www.wickmann.com/download/fuseology.pdf

Packaging

- 000: Tape/Ampopack (1000 pcs.)
- 041: Short Leads - Bulk (1000 pcs.)

Materials

- Base/Cap: Brown Thermoplastic
 Polyamide PA 6.6, UL 94V0
- Round Pins: Copper alloy, Sn plated

Operating Temperature

-40°C to +85°C (consider de-rating)

Climatic Category

-40°C/+85°C/21 days (EN 60068-1..3)

Stock Conditions

- +10°C to +60°C
- relative humidity ≤ 75% yearly average, without dew, maximum value for 30 days-95%

Vibration Resistance

- 24 cycles at 15 min. each (EN 60068-6)
- 10 - 60Hz at 0.75mm amplitude
- 60 - 2000Hz at 10g acceleration

Lead Pull Strength

10N (EN 60068-2-21)

Solderability

- 260°C, ≤ 3 sec. (Wave+Reflow)
- 350°C, ≤ 1 sec. (Hand)

Soldering Heat Resistance

260°C, 10 sec. (IEC 60068-2-20)

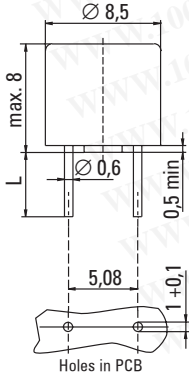
Marking

 , 372, 250V, T, Current Rating, Approvals

Unit Weight

0.77g (approx.)

Dimensions (mm)



Long Leads (L=18.8mm)
 Short Leads (L=4.3mm)

勝特力材料 886-3-5753170
 勝特力电子(上海) 86-21-54151736
 勝特力电子(深圳) 86-755-83298787
[Http://www.100y.com.tw](http://www.100y.com.tw)

Limits for Pre-arcing Time

Rated Current	1.5 x I _N	2.1 x I _N	2.75 x I _N	4 x I _N	10 x I _N
40mA ... 6.30A	> 1h	< 2 min	400ms ... 10s	150ms ... 3s	20ms ... 150ms



Permissible continuous operating current is ≤ 100% at ambient temperature of 23°C (73.4°F).

Rated Current	Amp Code	Voltage Rating	Breaking Capacity	Voltage Drop 1.0 x I _N max. (mV)	Power Dissipation 1.5 x I _N max. (mW)	Melting Integral 10 x I _N min. (A²s)	Approvals				
							VDE	SEMKO	cULus	METI	CCC
40mA	0040	250V		900	90	0.009					
50mA	0050	250V		500	70	0.01	•	•	•		p
63mA	0063	250V		400	80	0.02	•	•	•		•
80mA	0080	250V		370	100	0.023	•	•	•		•
100mA	0100	250V		300	110	0.047	•	•	•		•
125mA	0125	250V		260	120	0.066	•	•	•		•
160mA	0160	250V		200	130	0.14	•	•	•		•
200mA	0200	250V		170	140	0.2	•	•	•		•
250mA	0250	250V	35A / 250VAC ¹ 50-60Hz cos φ = 1.0	150	150	0.28	•	•	•		•
315mA	0315	250V		140	160	0.36	•	•	•		•
400mA	0400	250V		130	170	0.9	•	•	•		•
500mA	0500	250V		125	180	1.3	•	•	•		•
630mA	0630	250V		120	200	2.5	•	•	•		•
800mA	0800	250V		110	220	3.8	•	•	•		•
1.00A	1100	250V		110	360	5.5	•	•	•		•
1.25A	1125	250V		95	450	9	•	•	•		•
1.60A	1160	250V		95	450	14	•	•	•		•
2.00A	1200	250V		85	600	23	•	•	•		•
2.50A	1250	250V		80	700	35	•	•	•		•
3.15A	1315	250V		80	1100	60	•	•	•		•
4.00A	1400	250V		75	1200	95	•	•	•		•
5.00A	1500	250V		80	1300	94	•	•	•		•
6.30A*	1630	250V		58	1250	105	G	•	•		•

¹ Per UL, approved breaking capacity is 50 A at 250V.

* Conducting path min. 0.2mm²

^G Expert Report
 p = pending

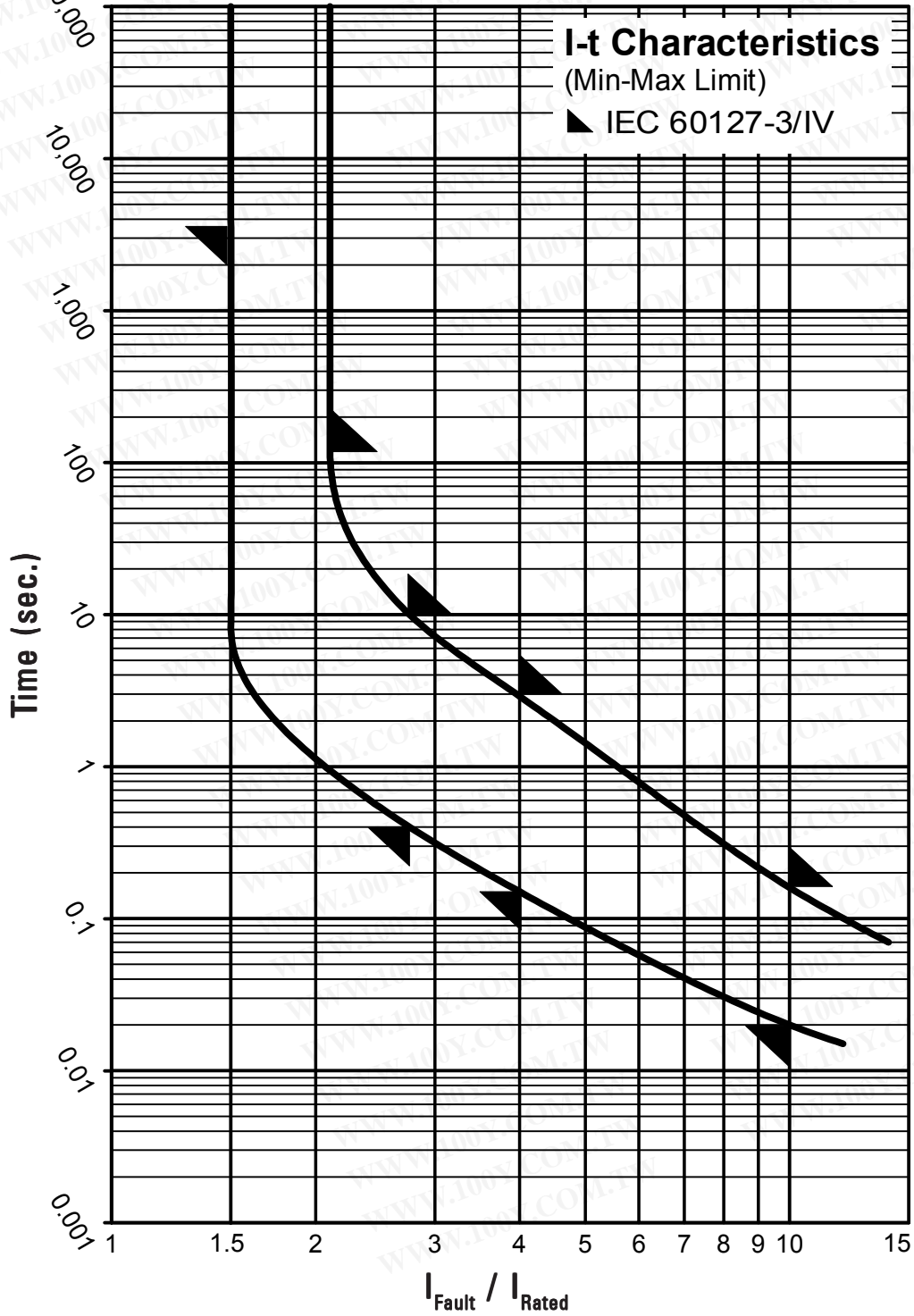
Order Information

Qty.	Order-Number	Series	Amp Code	Packaging
		372		

Specifications are subject to change without notice

勝特力材料 886-3-5753170
 勝特力电子(上海) 86-21-54151736
 勝特力电子(深圳) 86-755-83298787
[Http://www.100y.com.tw](http://www.100y.com.tw)

TR5® / No. 372



Contact WICKMANN for individual I-t curves