

勝特力材料 886-3-5753170
 勝特力电子(上海) 86-21-54151736
 勝特力电子(深圳) 86-755-83298787
[Http://www.100y.com.tw](http://www.100y.com.tw)

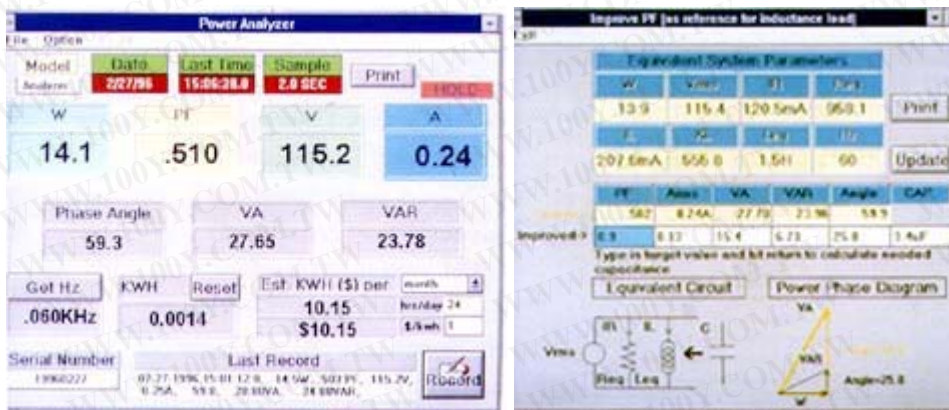
Power Analyzer Datalogger

MODEL WM-01/WM-02

- 4 LCD Displays with W, PF, V, A
- Easy Plug-in and Test
- RS-232 Computer Interface



WM-01



Specifications for WM-01/WM-02

WATT (Auto Range, AC & DC)

Range	Resolution	Accuracy	輸 入
200W	0.1W	0.9% of rdg \pm 4 dgts	0-300V,0-20A,0-400Hz,PF=0-1

VOLTAGE (True RMS, Auto Range, AC & DC)

Range	Resolution	Accuracy	Frequency	Overload Protection
750	0.1V	0.5% of rdg \pm 3 dgts	0-5KHz	1000VDC/750VAC

CURRENT (True RMS, AC & DC)

Range	Resolution	Accuracy	Frequency	Overload Protection
20A	0.01	0.5% of rdg \pm 3 dgts	0-5KHz	20A, fused

FREQUENCY (Sensitivity > 5V)

Range	Resolution	Accuracy
2K/20K/200K/2M/20MHz	1Hz-10KHz	0.5% of rdg +/- 2 dgts

PF (Direct Calculation from W, V, A)

$$PF = \text{Watt} / (V * A)$$

General Specification:

Numerical Display	3 1/2 digits LCD
Over Range Indication	OL on LCD
Sampling Rate	2.5 times/sec.
Power Source	1.5V AA batteries
Power Consumption	22mA approx.
Operating Temperature	0~40°C
Operating Humidity	Less than 80%
Dimension	352mm(L)*300mm(W)*100mm(H) 13.9"(L)*11.8"(W)*3.9"(H)
Weight	1.637 Kg(approx.) 3.6 lbs(approx.)

勝特力材料 886-3-5753170
勝特力电子(上海) 86-21-54151736
勝特力电子(深圳) 86-755-83298787
[Http://www.100y.com.tw](http://www.100y.com.tw)