

**PRE-MOUNTING AID. (CUT & PRESS)**  
**YN-101**

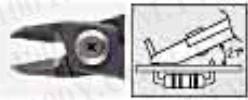


It is exclusively for cutting leads with a maximum diameter of 1.3mm. It cuts without placing any load on the components.

**NOTE** : Only use for cutting copper wire.

- It is exclusively for temporarily mounting parts like resistors, condensers and transformers.
- The lead wire is cut and pressed at the same time with a height of 1.5mm above and parallel to the PCB surface with only one squeeze.

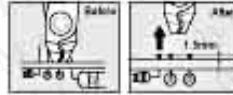
**NOTE** : Only use for cutting copper wire.



**Enlarge**

MODEL	Max. Cut Dia. / mm	Length / mm
-------	--------------------	-------------

YN-23	φ1.3	124
-------	------	-----



**Enlarge**

MODEL	Max. Cut Dia. / mm	Length / mm
-------	--------------------	-------------

YN-101	φ1.0	128
--------	------	-----

勝特力材料 886-3-5753170  
 勝特力电子(上海) 86-21-54151736  
 勝特力电子(深圳) 86-755-83298787  
[Http://www.100y.com.tw](http://www.100y.com.tw)

**HEAVY DUTY NIPPERS**  
(STANDARD CUT)

YN-24



It is exclusively for leads with a maximum diameter of 2.5mm. It also cuts copper wire with a diameter up to 2.5mm with the specially processed edge. The cutting blade angle is 21° allowing sharp cuts comfortably.

NOTE : Only use for cutting copper wire.



Enlarge

MODEL	Max. Cut Dia. / mm	Length / mm
YN-24	φ2.5	125

**INCLINED CLEAN FRONTAL CUT**  
YN-103



- It is for cutting work of closely mounted components on high density PCBs.

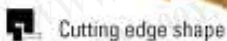
NOTE : Only use for cutting copper wire.



Enlarge

MODEL	Max. Cut Dia. / mm	Length / mm
YN-103	φ0.6	118

**PRE-MOUNTING AID. (CUT & BEND)**  
YN-100



- Suitable for pre-mounting the electronic components.
- Cut the leads at 1.5mm height from surface of the PCB and bending 45° simultaneously.

NOTE : Only use for cutting copper wire.



Enlarge

MODEL	Max. Cut Dia. / mm	Length / mm
YN-100	φ1.0	128

**1.5mm CUT NIPPERS (HORIZONTAL TYPE)**  
YN-104



- The leads are cut at a height of 1.5mm and parallel to the PCB surface.

NOTE : Only use for cutting copper wire.



Enlarge

MODEL	Max. Cut Dia. / mm	Length / mm
YN-104	φ1.3	132

勝特力材料 886-3-5753170  
勝特力电子(上海) 86-21-54151736  
勝特力电子(深圳) 86-755-83298787  
Http://www.100y.com.tw

**PLASTIC CUT NIPPERS**  
**YN-105**



Cutting edge shape

Its curved cutting edge cleanly cuts the waste off plastic parts.



**Enlarge**

MODEL	Max. Cut Dia. / mm	Length / mm
YN-105	φ2.5	148

勝特力材料 886-3-5753170  
勝特力电子(上海) 86-21-54151736  
勝特力电子(深圳) 86-755-83298787  
[Http://www.100y.com.tw](http://www.100y.com.tw)